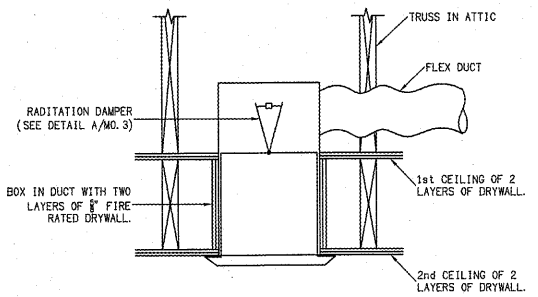


1030 Washington St
Raleigh, NC 27605
Phone: 919-846-1600
Fax: 919-846-9404
ARCHITECTSKT.COM

THE DRAWINGS AND DESIGN HEREIN ARE THE PROPERTY OF ARCHITECT TIMOTHY KURMASKIE, AIA, NCARB. THE REPRODUCTION OR USE OF THIS PROPERTY WITHOUT THE WRITTEN CONSENT FROM THE ARCHITECT IS PROHIBITED AND ANY INFRINGEMENT OF THESE RIGHTS IS SUBJECT TO LEGAL ACTION.



DAVID SIMS & ASSOCIATES, P.C.
Consulting Engineers
Arboretum Centre
108 Giles Avenue - Suite 100
Wilmington, N.C. 28403
(910) 791-8016 (OFFICE)
(910) 395-5734 (FAX)



VERIFY THE USE OF A RADIATION DAMPER IN THIS ARRANGEMENT WITH THE LOCAL INSPECTION DEPARTMENT PRIOR TO ORDERING.

B DOUBLE CEILING RADIATION DAMPER DETAIL
MO.3 SCALE: NTS 1 HR SHEETROCK CEILING

POTTORFF®

model **CFD-521**
1 hour — ceiling radiation damper
butterfly style blade

Application
The CFD-521 ceiling radiation damper employs butterfly style blades for point-of-origin control of radiant heat in HVAC systems. The CFD-521 is installed horizontally in the ceiling membrane of combustible floor-ceiling or roof-ceiling assemblies with the resistance ratings up to and including 1 hour.

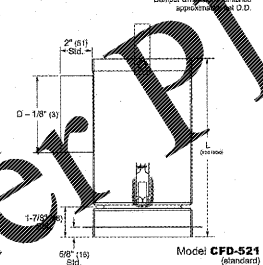
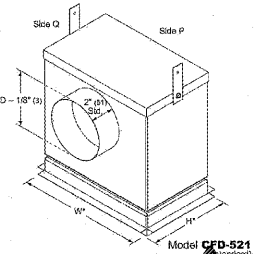
Standard Construction
Frame: 22 gauge (0.85) galvanized steel with integral outlet box.
Blades: 22 gauge (0.85) galvanized steel — butterfly, insulated with ceramic refractory material for dampers larger than 114 in.² (735 cm²).

Transitions: Round, with 2" (51) deep collar, located on W side of outlet box.
Plaster Ground: 5/8" (16) deep x 5/8" (16) wide.
Closure Device: Fusible link.
Fire Closure Temperature: 165°F (75°C).

Minimum Size: 4" x 4" (102 x 102)
Maximum Size: Square: 18" x 18" (457 x 457)
Rectangular: 24" (610) W or 20" (508) H with a maximum area of 324 in.² (2090 cm²).

- Options**
- Alternate Transition: None (field adaptation required).
 - Round: Oval Square/Rectangular
 - Side: H P D
 - Collar depth: 4" (102)
 - Alternate Plaster Ground:
 - 1/2" (13) deep x 1 1/2" (38) wide
 - 2" (51) deep x 1 1/2" (38) wide
 - 4" (102) deep x 1 1/2" (38) wide
 - Alternate 212°F (100°C) fire closure temperature.
 - VC — Volume control device factory mounted.
 - WHI installation angle set:
 - 2 angles 1" x 1/2" x 28" long (25 x 13 x 711) x 20 ga. (1.0)
 - 2 angles 1" x 1/2" x 3" long (25 x 13 x 76) x 20 ga. (1.0)

- Ratings**
UL 555C Fire Resistance Rating: 1 hour for installation in floor designs L-521, L-545, L-559, L-562, L-576, L-574, L-581, L-583, L-585 and in roofing designs P-522, P-533, P-538, P-545 and P-547.
- Listings**
UL 555C listing: R14603
CSFM listing: 3226-0368-104
Warnock Hersey listing #: WHI-496-PSH-0177, -0178
Meets NFPA Standards: 90A and 101
Meets Building Code Standards: IBC, NBC, NFPA, SBC and UBC



Duct Diameter	Damper Height	Outlet Box Height 1"
D ≤ 8" (203)	H ≤ 16" (406)	11" (279)
8 (203) < D ≤ 11" (279)	16" (406) < H ≤ 20" (508)	14" (354)
11" (279) < D ≤ 12" (305)	-	15" (381)
D > 12" (305)	-	D + 3 (76)

Information is subject to change without notice or obligation. NOTE: Dimensions in parentheses () are millimeters.
POTTORFF® 5101 Blue Mound Road, Fort Worth, Texas 76106 www.pottorff.com

THE OPERATING TEMPERATURE OF THE CEILING RADIATION DAMPER ACTUATION DEVICE SHALL BE 50°F ABOVE THE NORMAL TEMPERATURE WITHIN THE DUCT SYSTEM, BUT NOT LESS THAN 180°F.
VERIFY WITH MANUFACTURER THE ACCEPTABILITY OF THIS PRODUCT WITH THE INSTALLATION AND APPLICATION PRIOR TO ORDERING. VERIFY THE MANUFACTURER HAS DOCUMENTATION AND THAT THE DAMPER CAN BE INSTALLED WITH ALUMINUM GRILLES/DIFFUSERS PRIOR TO ORDERING. INSTALLATION SHALL BE AS PER THE MANUFACTURERS RECOMMENDATIONS.

A RADIATION DAMPER DETAIL
MO.3 SCALE: NTS 1 HR SHEETROCK CEILING

POTTORFF®

model **VFD-10-B**
1 1/2 hour — static fire damper
curtain style blade

Application
The VFD-10-B fire damper employs out of the airstream curtain style blades for point-of-origin control of fire in static HVAC systems. The VFD-10-B may be installed in vertical walls or partitions, or horizontally in floors or assemblies with fire resistance ratings up to 2 hours.

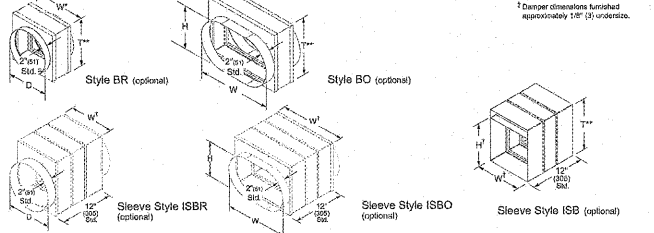
Standard Construction
Frame: 22 gauge (0.85) galvanized steel — curtain style.
Blades: 24 gauge (0.7) galvanized steel — curtain style.
Fire Closure Device: Fusible link.
Fire Closure Temperature: 165°F (75°C)

Minimum Size: Vertical mount: 4" x 2" (102 x 51)
Horizontal mount: 6" x 4" (152 x 102)
Maximum Size: Single section: Vertical: 48" x 44" (1219 x 1118)
Horizontal: 40" x 36" (1016 x 914)
Multiple Section: Vertical: 120" x 78" (3048 x 1981)
Horizontal: 60" x 76" (1524 x 1930)**Stainless Steel:** Single section: 40" x 36" (1016 x 914)
Vertical/Horizontal mount: 60" x 36" (1524 x 914) or 72" x 78" (1829 x 1981)

- Options**
- Factory installed sleeve: Integral 18 (457) 10 (254)
 - Gauge: 22 (0.85) 19 (0.75) 16 (1.6)
 - Length: 12 (305) 24 (609) 36 (914) Other
 - Low leakage taped joints (integral sleeve required)
 - Transitions:
 - Round Oval Square/Rectangular
 - Duct connections (sleeve required):
 - 1" (25) S-slip DM-25 DM-3
 - WARD
 - Relating angle systems:
 - Gauge: 20 (1.0) 16 (1.6)
 - Picture frame: SSPF (single-side) DSPF (2-side)
 - Individual angle sets: SS (single-side) DS (2-side)
 - Alternate fire closure temperature:
 - 212°F (100°C)
 - Duct access door factory mounted in common sleeve.
 - Generic mullion for oversized masonry or concrete openings.
 - Type-304 stainless steel construction (not available with integral sleeve option).

Round Transitions
(Standard with D-9WH. Available with D-9V and H)

Oval Transitions
(Standard with W and H equal to damper width and height dimensions. Available with W and H smaller than damper width and height)



Information is subject to change without notice or obligation. NOTE: Dimensions in parentheses () are millimeters.
POTTORFF® 5101 Blue Mound Road, Fort Worth, Texas 76106 www.pottorff.com

VERIFY WITH MANUFACTURER THE ACCEPTABILITY OF THIS PRODUCT WITH THE INSTALLATION AND APPLICATION PRIOR TO ORDERING. INSTALLATION SHALL BE AS PER THE MANUFACTURERS RECOMMENDATIONS.

C STATIC FIRE DAMPER DETAIL
MO.3 SCALE: NTS

POTTORFF®

model **VFD-10D-B**
1 1/2 hour • dynamic rated — fire damper
curtain style blade

Application
The VFD-10D-B fire damper employs out of the airstream curtain style blades for point-of-origin control of fire in static and dynamic HVAC systems. The VFD-10D-B is qualified to 4,000 fpm (204 m/min) and 4 in.wg. (1.0 kPa) and may be installed in vertical walls or partitions, or horizontally in floors or assemblies with fire resistance ratings up to 2 hours.

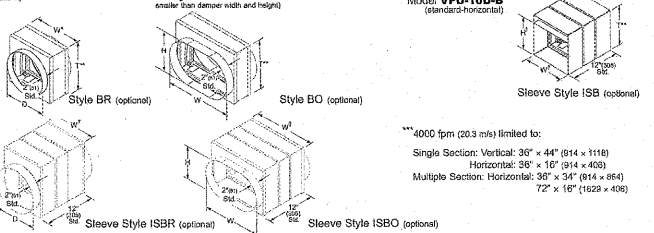
Standard Construction
Frame: 24 gauge (0.7) galvanized steel — curtain style.
Blades: 24 gauge (0.7) galvanized steel — curtain style.
Fire Closure Device: Fusible link.
Fire Closure Temperature: 165°F (75°C)

Minimum Size: 6" x 4" (152 x 102)
Maximum Size: Single section: Vertical: 36" x 44" (914 x 1118)
Horizontal: 36" x 33" (914 x 838)
Multiple Section: Vertical: 72" x 44" (1829 x 1118)
Horizontal: 36" x 92" (914 x 2337)
72" x 34" (1829 x 864)
72" x 16" (1829 x 406)

- Options**
- Factory installed sleeve: Integral 18 (457) 10 (254)
 - Gauge: 22 (0.85) 19 (0.75) 16 (1.6)
 - Length: 12 (305) 24 (609) 36 (914) Other
 - Low leakage taped joints (integral sleeve required)
 - Transitions:
 - Round Oval Square/Rectangular
 - Duct connections (sleeve required):
 - 1" (25) S-slip DM-25 DM-3
 - WARD
 - Relating angle systems:
 - Gauge: 20 (1.0) 16 (1.6)
 - Picture frame: SSPF (single-side) DSPF (2-side)
 - Individual angle sets: SS (single-side) DS (2-side)
 - Alternate fire closure temperature:
 - 212°F (100°C)
 - Duct access door factory mounted in common sleeve.
 - Generic mullion for oversized masonry or concrete openings.
 - Type-304 stainless steel construction.

Round Transitions
(Standard with D-9WH. Available with D-9V and H)

Oval Transitions
(Standard with W and H equal to damper width and height dimensions. Available with W and H smaller than damper width and height)



Information is subject to change without notice or obligation. NOTE: Dimensions in parentheses () are millimeters.
POTTORFF® 5101 Blue Mound Road, Fort Worth, Texas 76106 www.pottorff.com

VERIFY WITH MANUFACTURER THE ACCEPTABILITY OF THIS PRODUCT WITH THE INSTALLATION AND APPLICATION PRIOR TO ORDERING. INSTALLATION SHALL BE AS PER THE MANUFACTURERS RECOMMENDATIONS.

D DYNAMIC FIRE DAMPER DETAIL
MO.3 SCALE: NTS

ALTERATION & ADDITION TO:
PruittHealth Savannah
12825 WHITE BLUFF ROAD
SAVANNAH, GA 31419

Project Reference Numbers
Architect's Project No. 180017

Drawn By:

REVISIONS

DATES	
PHASE	ISSUED
PERMIT SET	05/22/19

MECHANICAL DETAILS

SHEET NUMBER

M0.3