

PLANT SCHEDULE

ABRV.	QTY.	COMMON NAME	BOTANICAL NAME	SIZE	HEIGHT	SPREAD	LQP	TQP	NOTES
PI	2	PERSIAN IRONWOOD	Quercus shumardii	45 gal.	10'-12'	4'-5'		60	2.5" cal. minimum
CM	10	CRAPE MYRTLE	Lagerstroemia indica 'Natchez'	30 gal.	10'-12'	4'-5'	100		
EH	7	EAST PALATKA HOLLY	Ilex x 'East Palatka'	15 gal.	6'-8'	2'-4'	70		Full to ground Tree Form
WL	19	WAX LEAF LIGUSTRUM	Ligustrum japonica 'Wax Leaf'	15 gal.	6'-8'	3'-4'	95		
TO	2	TEA OLIVE	Osmanthus fragrans	7 gal.	18"-24"	18"	20		
SP	3	SAW PALMETTO	Serenoa repens	3 gal.	12"	12"-18"	9		
AG	53	DWARF ABELIA	Abelia grandiflora 'Rose Creek'	3 gal.	12"-18"	12"-18"	159		
BB	35	DWARF BOTTLEBRUSH	Callistemon viminalis 'Little John'	3 gal.	12"-18"	12"-18"	105		
VO	95	DWARF VIBURNUM	Viburnum obovatum 'Mrs. Schiller's'	3 gal.	12"-18"	12"-18"	285		
LH	13	LIME LIGHT HYDRANGEA	Hydrangea paniculata 'Limelight'	3 gal.	12"-18"	12"	32.5		
LA	19	LANTANA	Lantana camara 'New Gold'	1 gal.	12"	8"-10"	28.5		
LN	61	LILY OF THE NILE	Agapanthus africanus	1 gal.	12"	8"-10"	6.1		
SOD	21,951sf	CENTPEDEE SOD	Eremochloa ophiuroides						

TOTAL PLANTED = 910.1 60

TREE & LANDSCAPE QUALITY POINTS

TOTAL TREE QUALITY POINTS REQUIRED
6.83 TOTAL SITE ACRES X 1,600 TQP's / ACRE = 10,928 TQP REQUIRED

PLANTED TREE QUALITY POINTS: 60

EXISTING TREE QUALITY POINTS:
23,288.25 - SEE EXISTING TREES RETAINED CHART

TOTAL TREE QUALITY POINTS PROVIDED = 23,348.25
EXCEEDS MINIMUM REQUIREMENTS

TOTAL TREE QUALITY POINTS REQUIRED (PARKING) ** REMAINING FROM PREVIOUS ADDITION
0.11 PARKING ACRES X 1,200 TQP / ACRE = 132 PARKING TQP
TOTAL TREE QUALITY POINTS REMAINING (PARKING) = 300
EXCEEDS MINIMUM REQUIREMENTS

TOTAL TREE QUALITY POINTS REQUIRED (PARKING) ** CURRENT ADDITION CALCULATIONS
0.04 PARKING ACRES X 1,200 TQP / ACRE = 48 PARKING TQP
TOTAL TREE QUALITY POINTS PROVIDED (PARKING) = 60
EXCEEDS MINIMUM REQUIREMENTS

TOTAL LANDSCAPE QUALITY POINTS REQUIRED
1.08 DISTURBED ACRES X 400 LQP / ACRE = 432 LQP

PLANTED LANDSCAPE QUALITY POINTS = 910.1

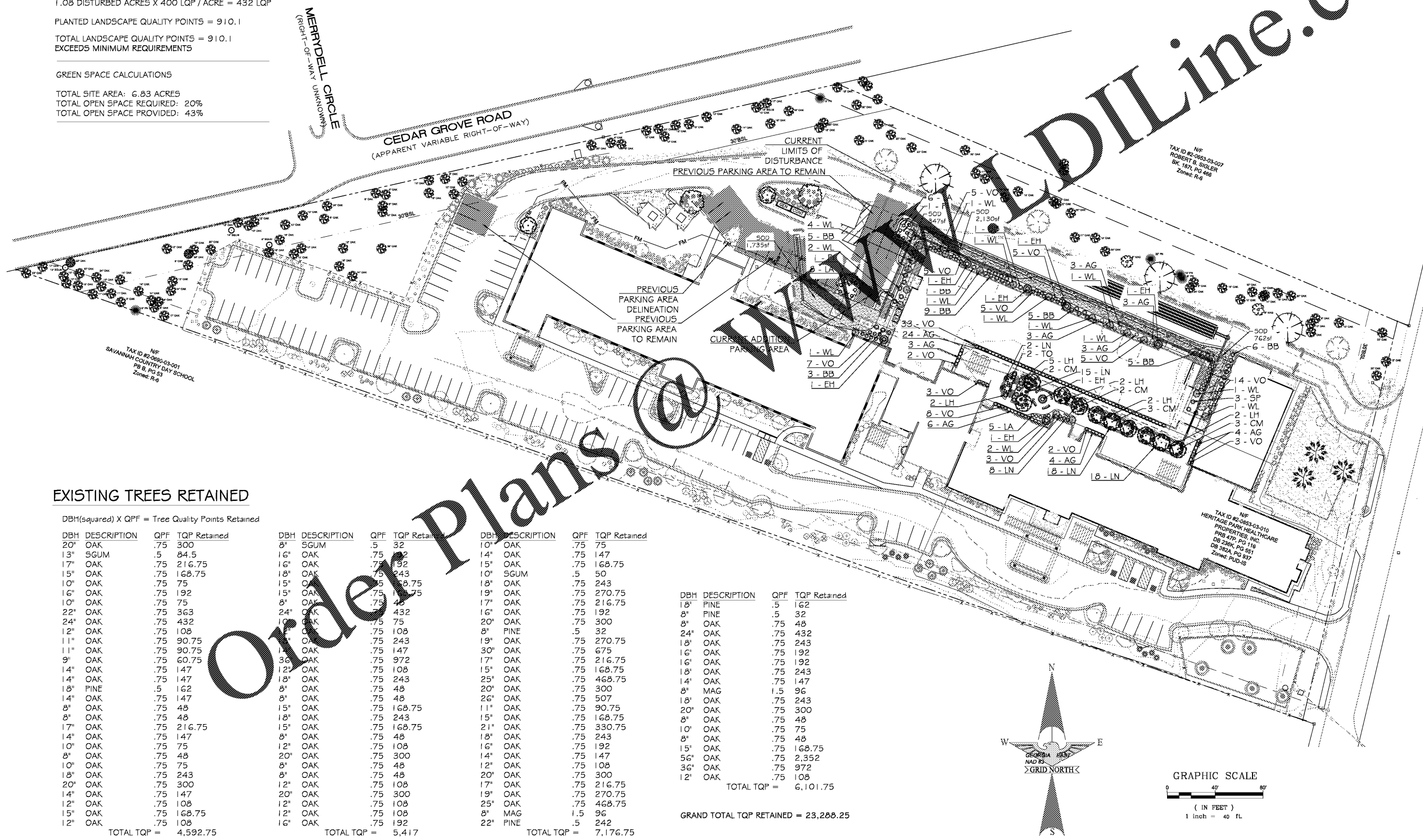
TOTAL LANDSCAPE QUALITY POINTS = 910.1
EXCEEDS MINIMUM REQUIREMENTS

GREEN SPACE CALCULATIONS

TOTAL SITE AREA: 6.83 ACRES
TOTAL OPEN SPACE REQUIRED: 20%
TOTAL OPEN SPACE PROVIDED: 43%

LANDSCAPE NOTES:

- 1) SOD AREA IS APPROXIMATE AND FOR PRICING PURPOSES ONLY. CONTRACTOR TO VERIFY SOD QUANTITY PRIOR TO INSTALLATION.
- 2) LANDSCAPE CONTRACTOR CAN SUBSTITUTE PERSIAN IRONWOOD WITH RIVER BIRCH 'DURA HEAT' IF IRONWOOD ARE DIFFICULT TO SOURCE AT TIME OF PLANTING.

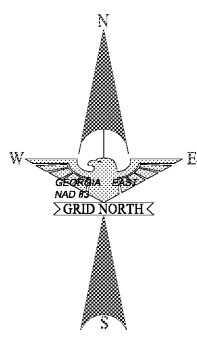


EXISTING TREES RETAINED

DBH(squared) X QPF = Tree Quality Points Retained

DBH	DESCRIPTION	QPF	TQP Retained	DBH	DESCRIPTION	QPF	TQP Retained	DBH	DESCRIPTION	QPF	TQP Retained
20"	OAK	.75	300	8"	SGUM	.5	32	10"	OAK	.75	75
13"	SGUM	.5	84.5	14"	OAK	.75	147	14"	OAK	.75	147
17"	OAK	.75	216.75	16"	OAK	.75	192	15"	OAK	.75	168.75
15"	OAK	.75	168.75	18"	OAK	.75	243	10"	SGUM	.5	50
10"	OAK	.75	75	15"	OAK	.75	243	18"	OAK	.75	243
16"	OAK	.75	192	15"	OAK	.75	168.75	19"	OAK	.75	270.75
10"	OAK	.75	75	24"	OAK	.75	432	17"	OAK	.75	216.75
22"	OAK	.75	363	10"	OAK	.75	48	16"	OAK	.75	192
24"	OAK	.75	432	8"	PINE	.5	32	20"	OAK	.75	300
12"	OAK	.75	108	11"	OAK	.75	108	8"	PINE	.5	32
11"	OAK	.75	90.75	14"	OAK	.75	147	19"	OAK	.75	270.75
11"	OAK	.75	90.75	16"	OAK	.75	192	30"	OAK	.75	675
9"	OAK	.75	60.75	12"	OAK	.75	972	17"	OAK	.75	216.75
14"	OAK	.75	147	12"	OAK	.75	108	15"	OAK	.75	168.75
14"	OAK	.75	147	18"	OAK	.75	243	25"	OAK	.75	468.75
18"	PINE	.5	162	8"	OAK	.75	48	20"	OAK	.75	300
14"	OAK	.75	147	8"	OAK	.75	48	26"	OAK	.75	507
8"	OAK	.75	48	15"	OAK	.75	168.75	11"	OAK	.75	90.75
8"	OAK	.75	48	15"	OAK	.75	243	15"	OAK	.75	168.75
17"	OAK	.75	216.75	15"	OAK	.75	168.75	21"	OAK	.75	330.75
14"	OAK	.75	147	8"	OAK	.75	48	18"	OAK	.75	243
10"	OAK	.75	75	15"	OAK	.75	168.75	16"	OAK	.75	192
8"	OAK	.75	48	8"	OAK	.75	48	14"	OAK	.75	147
8"	OAK	.75	48	15"	OAK	.75	168.75	8"	MAG	1.5	96
17"	OAK	.75	216.75	15"	OAK	.75	243	18"	OAK	.75	243
14"	OAK	.75	147	11"	OAK	.75	90.75	20"	OAK	.75	300
10"	OAK	.75	75	15"	OAK	.75	168.75	8"	OAK	.75	48
8"	OAK	.75	48	8"	OAK	.75	48	10"	OAK	.75	75
10"	OAK	.75	75	20"	OAK	.75	300	8"	OAK	.75	48
18"	OAK	.75	243	15"	OAK	.75	168.75	15"	OAK	.75	168.75
20"	OAK	.75	300	8"	OAK	.75	48	56"	OAK	.75	2,352
14"	OAK	.75	147	12"	OAK	.75	108	36"	OAK	.75	972
8"	OAK	.75	48	20"	OAK	.75	300	12"	OAK	.75	108
10"	OAK	.75	75	17"	OAK	.75	216.75				
18"	OAK	.75	243	19"	OAK	.75	270.75				
20"	OAK	.75	300	25"	OAK	.75	468.75				
14"	OAK	.75	147	8"	MAG	1.5	96				
12"	OAK	.75	108	22"	PINE	.5	242				
15"	OAK	.75	168.75								
12"	OAK	.75	108								
15"	OAK	.75	168.75								
12"	OAK	.75	108								
TOTAL TQP =			4,592.75	TOTAL TQP =			5,417	TOTAL TQP =			7,176.75

GRAND TOTAL TQP RETAINED = 23,288.25



ARCHITECT
TIMOTHY
KURMASKIE
AIA, NCARB
Building A, Suite 503
1111 East 17th St
Savannah, GA 31404
Phone: 912.369.9434
Fax: 912.369.9434
www.kurmaskie.com

EAGLE
ENGINEERING
2013-A Van Buren Avenue P.O. BOX 551
Indian Trail, NC 28079 Alpharetta, GA 30009
(704) 882-4222 (678) 339-0640
www.eagleline.net



RENOVATION & ADDITION TO:
HERITAGE OF
HEALTHCARE OF
SAVANNAH
12825 WHITE BLUFF ROAD
SAVANNAH, GA 31419

Project Reference Numbers
Architect's Project No. 100001
Drawn By: SRM

REVISIONS
REVISED 10MAY20 PER PARK & TREE
COMMENTS

DATES	
PHASE	ISSUED

LANDSCAPE
PLAN
SHEET NUMBER

L-1.0