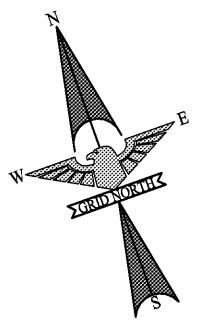


Legend of Symbols & Abbreviations

- EP - EXISTING IRON PIPE
- EIR - EXISTING IRON REBAR
- NIR - NEW IRON REBAR
- S.T. - SIGHT TRIANGLE
- M.B.S. - MINIMUM BUILDING SETBACK
- P.S.D.E. - PUBLIC STORM DRAINAGE EASEMENT
- S.S.E. - SANITARY SEWER EASEMENT
- SSMH - SANITARY SEWER MANHOLE
- R/W - RIGHT OF WAY
- P.S.S.E. - PRIVATE SANITARY SEWER EASEMENT
- GPUF - GENERAL PUBLIC UTILITY EASEMENT
- C.P. - COMPUTED POINT
- ECM - EXISTING CONCRETE MONUMENT
- E.P.K. - EXISTING P.K. NAIL
- ♿ - HANDICAPPED PARKING
- ⊠ - TRANSMISSION TOWER
- ⊙ - UTILITY POLE
- - UNDERGROUND GASLINE
- - OVERHEAD UTILITY LINE
- - SANITARY SEWER LINE
- ⊠ - SANITARY SEWER MANHOLE
- ⊠ - FIRE HYDRANT
- ⊠ - WATER VALVE
- ⊠ - WATER MANHOLE
- ⊠ - CATCH BASIN
- ⊠ - RAILROAD TRACK
- ⊠ - MONITORING WELL
- ⊠ - ELECTRIC BOX/TRANSFORMER
- ⊠ - CURB INLET
- ⊠ - YARD INLET
- - STORM DRAIN
- - WATER LINE
- - FENCE LINE
- - ZONING LINE
- - UNDERGROUND TELE-COMMUNICATIONS



CITY OF SAVANNAH SANITARY SEWER GENERAL NOTES (S17):

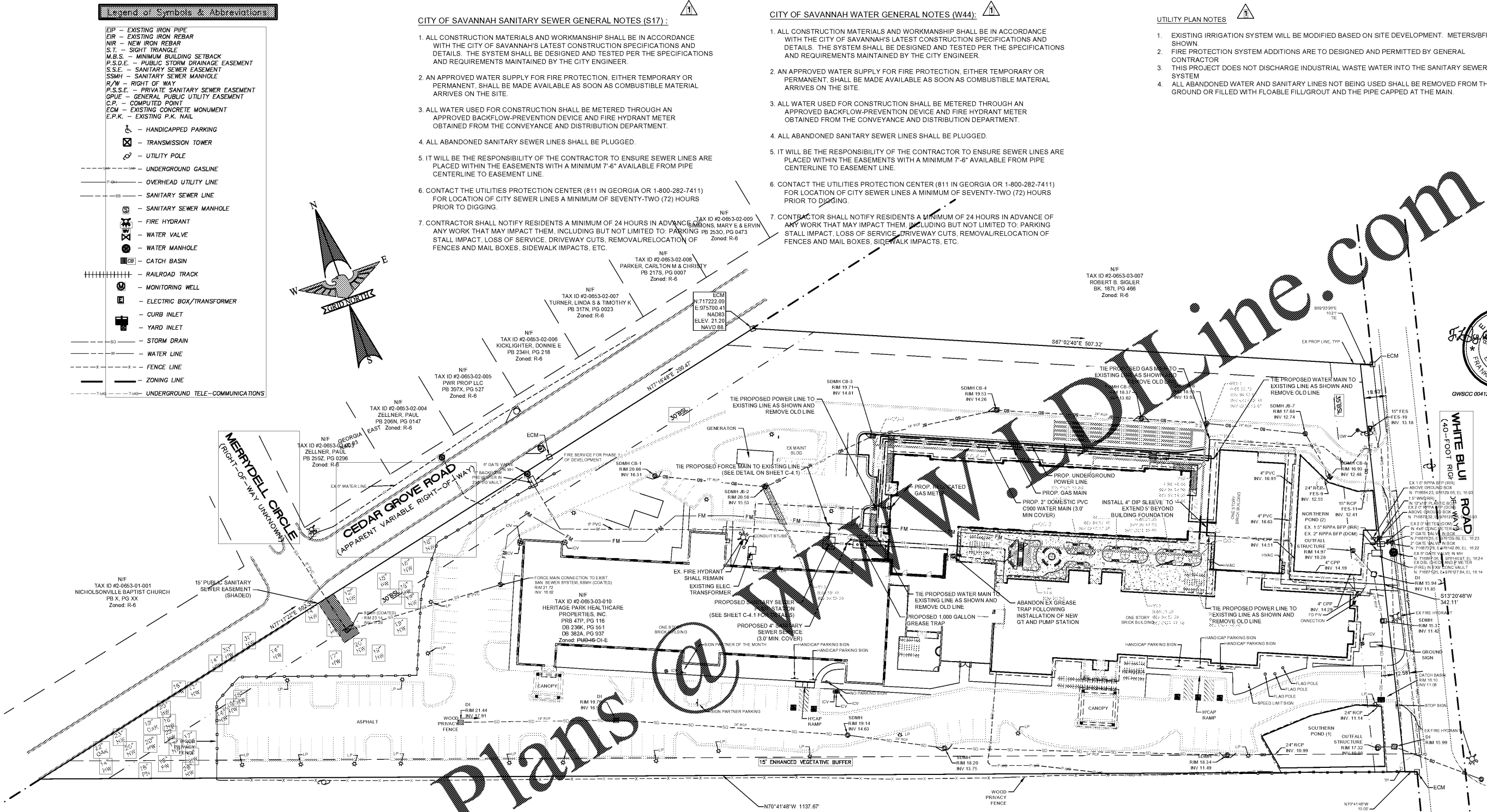
1. ALL CONSTRUCTION MATERIALS AND WORKMANSHIP SHALL BE IN ACCORDANCE WITH THE CITY OF SAVANNAH'S LATEST CONSTRUCTION SPECIFICATIONS AND DETAILS. THE SYSTEM SHALL BE DESIGNED AND TESTED PER THE SPECIFICATIONS AND REQUIREMENTS MAINTAINED BY THE CITY ENGINEER.
2. AN APPROVED WATER SUPPLY FOR FIRE PROTECTION, EITHER TEMPORARY OR PERMANENT, SHALL BE MADE AVAILABLE AS SOON AS COMBUSTIBLE MATERIAL ARRIVES ON THE SITE.
3. ALL WATER USED FOR CONSTRUCTION SHALL BE METERED THROUGH AN APPROVED BACKFLOW-PREVENTION DEVICE AND FIRE HYDRANT METER OBTAINED FROM THE CONVEYANCE AND DISTRIBUTION DEPARTMENT.
4. ALL ABANDONED SANITARY SEWER LINES SHALL BE PLUGGED.
5. IT WILL BE THE RESPONSIBILITY OF THE CONTRACTOR TO ENSURE SEWER LINES ARE PLACED WITHIN THE EASEMENTS WITH A MINIMUM 7'-6" AVAILABLE FROM PIPE CENTERLINE TO EASEMENT LINE.
6. CONTACT THE UTILITIES PROTECTION CENTER (811 IN GEORGIA OR 1-800-282-7411) FOR LOCATION OF CITY SEWER LINES A MINIMUM OF SEVENTY-TWO (72) HOURS PRIOR TO DIGGING.
7. CONTRACTOR SHALL NOTIFY RESIDENTS A MINIMUM OF 24 HOURS IN ADVANCE ANY WORK THAT MAY IMPACT THEM, INCLUDING BUT NOT LIMITED TO: PARKING STALL IMPACT, LOSS OF SERVICE, DRIVEWAY CUTS, REMOVAL/RELOCATION OF FENCES AND MAIL BOXES, SIDEWALK IMPACTS, ETC.

CITY OF SAVANNAH WATER GENERAL NOTES (W44):

1. ALL CONSTRUCTION MATERIALS AND WORKMANSHIP SHALL BE IN ACCORDANCE WITH THE CITY OF SAVANNAH'S LATEST CONSTRUCTION SPECIFICATIONS AND DETAILS. THE SYSTEM SHALL BE DESIGNED AND TESTED PER THE SPECIFICATIONS AND REQUIREMENTS MAINTAINED BY THE CITY ENGINEER.
2. AN APPROVED WATER SUPPLY FOR FIRE PROTECTION, EITHER TEMPORARY OR PERMANENT, SHALL BE MADE AVAILABLE AS SOON AS COMBUSTIBLE MATERIAL ARRIVES ON THE SITE.
3. ALL WATER USED FOR CONSTRUCTION SHALL BE METERED THROUGH AN APPROVED BACKFLOW-PREVENTION DEVICE AND FIRE HYDRANT METER OBTAINED FROM THE CONVEYANCE AND DISTRIBUTION DEPARTMENT.
4. ALL ABANDONED SANITARY SEWER LINES SHALL BE PLUGGED.
5. IT WILL BE THE RESPONSIBILITY OF THE CONTRACTOR TO ENSURE SEWER LINES ARE PLACED WITHIN THE EASEMENTS WITH A MINIMUM 7'-6" AVAILABLE FROM PIPE CENTERLINE TO EASEMENT LINE.
6. CONTACT THE UTILITIES PROTECTION CENTER (811 IN GEORGIA OR 1-800-282-7411) FOR LOCATION OF CITY SEWER LINES A MINIMUM OF SEVENTY-TWO (72) HOURS PRIOR TO DIGGING.
7. CONTRACTOR SHALL NOTIFY RESIDENTS A MINIMUM OF 24 HOURS IN ADVANCE ANY WORK THAT MAY IMPACT THEM, INCLUDING BUT NOT LIMITED TO: PARKING STALL IMPACT, LOSS OF SERVICE, DRIVEWAY CUTS, REMOVAL/RELOCATION OF FENCES AND MAIL BOXES, SIDEWALK IMPACTS, ETC.

UTILITY PLAN NOTES

1. EXISTING IRRIGATION SYSTEM WILL BE MODIFIED BASED ON SITE DEVELOPMENT. METERS/BFP SHOWN.
2. FIRE PROTECTION SYSTEM ADDITIONS ARE TO BE DESIGNED AND PERMITTED BY GENERAL CONTRACTOR.
3. THIS PROJECT DOES NOT DISCHARGE INDUSTRIAL WASTE WATER INTO THE SANITARY SEWER SYSTEM.
4. ALL ABANDONED WATER AND SANITARY LINES NOT BEING USED SHALL BE REMOVED FROM THE GROUND OR FILLED WITH FLOABLE FILL/GROUT AND THE PIPE CAPPED AT THE MAIN.



ONSITE UTILITIES (WATER SYSTEM, STORMDRAINAGE FORCE MAIN AND SEWER PUMP STATION) ARE PRIVATELY OWNED AND MAINTAINED



ARCHITECT
TIMOTHY KURMASKIE
AIA, NCARB

100 Peachtree Street, Suite 600
Atlanta, GA 30309
Phone: 404.524.1500
Fax: 404.524.1504
www.enr.com

EAGLE ENGINEERING
2013A Van Buren Avenue
Indian Trail, NC 28079
(704) 882-4222
www.eagleonline.net



PruittHealth Savannah
12825 WHITE BLUFF ROAD
SAVANNAH, GA 31419

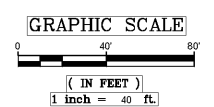
Project Reference Numbers
Architect's Project No. 100001
Drawn By: JLR / FLG

REVISIONS

DATES	
PHASE	ISSUED

UTILITY PLAN

SHEET NUMBER



C-4.0

Order Plans @ enr.com