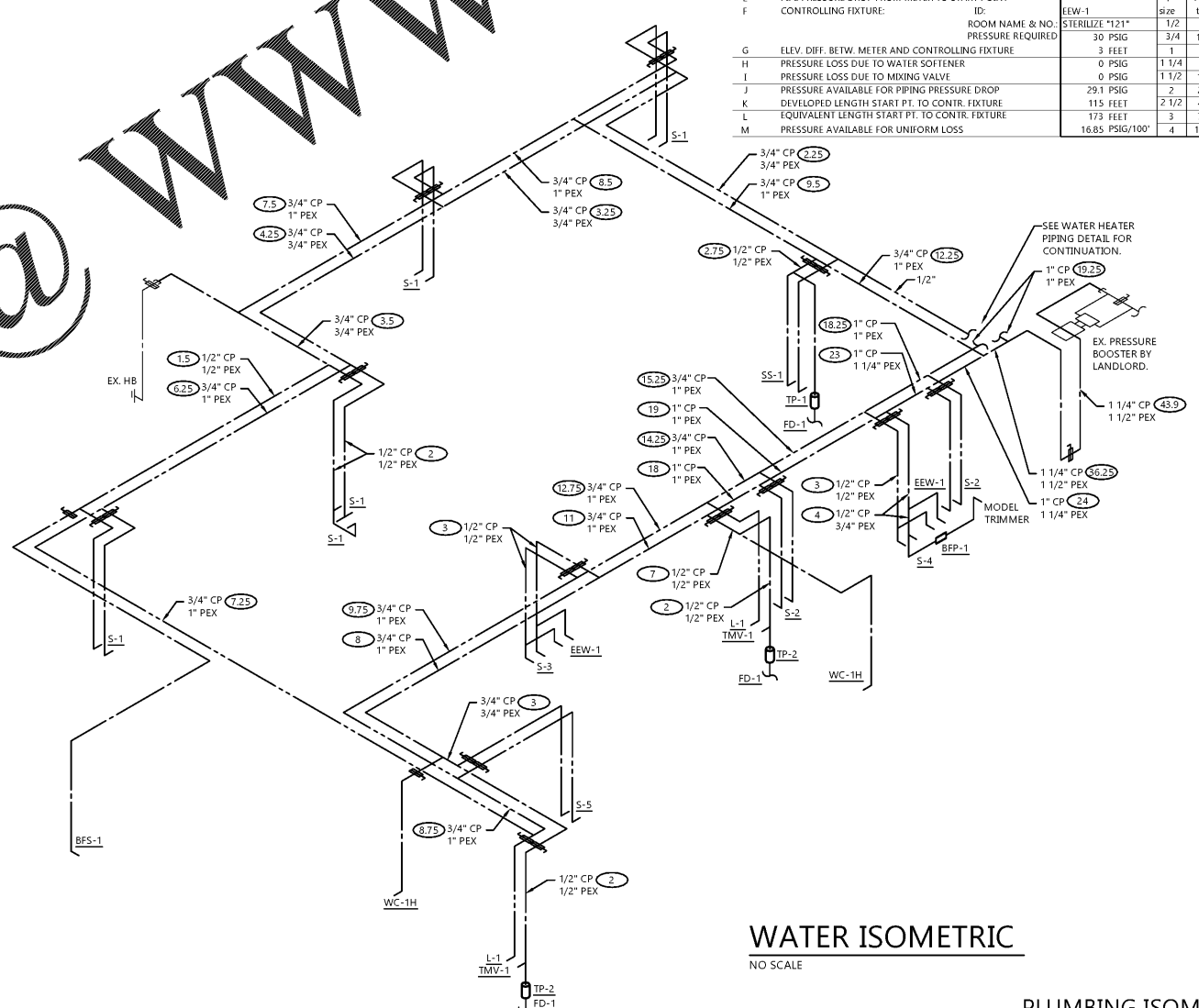


WASTE AND VENT ISOMETRIC
NO SCALE

FIXTURE UNITS

NO.	FIXTURE	WASTE		TRAP		COLD WATER		HOT WATER		TOTAL WATER	
		UNITS	TOTAL	UNITS	TOTAL	UNITS	TOTAL	UNITS	TOTAL	UNITS	TOTAL
1	BOTTLING STATION	1	1	1	1	0.5	0.5	-	-	0.5	0.5
3	FLOOR DRAIN- 3"	5	5	-	-	-	-	-	-	-	-
1	HUB OUTLET- 2"	3	3	-	-	-	-	-	-	-	-
1	RAM-VAC	5	5	-	-	-	-	-	-	-	-
2	LAV	1	1	2	2	1.5	3	3	3	2	4
7	SINK- S-1 & 2	7	7	1	1	7	7	7	7	1.5	10.5
2	SINK- S-3 & 4	2	2	3	3	6	6	3	3	4	8
1	SINK- S-5	2	2	1	1	1	1	1	1	1.4	1.4
2	SINK- S-6 & 7	2	2	2.25	2.25	2.25	2.25	2.25	2.25	3	3
2	WATER CANN	4	4	-	-	5	10	-	-	5	10
3	TRAP PRIMER	-	-	0.5	0.5	1.5	1.5	-	-	0.5	1.5
1	MODEL TRIMMER	-	-	1	1	1/2"	-	-	-	1	1
TOTAL		56	56	32.25	32.25	19.25	19.25	-	-	39.9	39.9



WATER ISOMETRIC
NO SCALE

WATER CALCULATIONS

WATER PRESSURE DATA

1	ASSUMED STATIC PRESSURE AT MAIN	60 PSIG
2	ASSUMED RESIDUAL PRESSURE AT MAIN	50 PSIG
3	ASSUMED RESIDUAL FLOW AT MAIN	1000 GPM
4	BUILDING FIXTURE UNITS	39.9 F.U.
5	PREDOMINATE FLUSH TYPE	TANK
6	CONTINUOUS FLOW GPM	0 GPM
7	BUILDING DEMAND	23.6 GPM
8	RESIDUAL PRESSURE AT BUILDING DEMAND	60.0 PSIG
9	SAFETY FACTOR	5 PSIG
10	PRESSURE AVAILABLE FOR DOMESTIC USE	55.0 PSIG

WATER SERVICE AND DISTRIBUTION SIZING DATA

11	ELEVATION OF RESIDUAL TEST HYDRANT	100.00 FEET
12	ELEVATION OF WATER METER	105.00 FEET
13	ELEVATION DIFFERENCE TEST HYDRANT TO METER	5.00 FEET
14	WATER METER SIZE	1 INCHES
15	DEVELOPED LENGTH MAIN TO METER	230 FEET
16	WATER SERVICE SIZE	1 1/2 INCHES

PRESSURE AVAILABLE AFTER METER

17	PRESSURE DROP BETWEEN MAIN AND METER	5.41 PSIG/100'
18	FRICTION PRESSURE LOSS BETWEEN MAIN AND METER	1.23 PSIG
19	ELEVATION PRESSURE LOSS BETWEEN MAIN AND METER	4 PSIG
20	METER PRESSURE LOSS	0 PSIG
21	BACKFLOW PREVENTER PRESSURE LOSS	0 PSIG
22	PRESSURE AVAILABLE AFTER METER	60.4 PSIG
23	PRESSURE SETTING OF BOOSTER PUMP	60.4 PSIG
25	AVAILABLE BUILDING WATER PRESSURE	60.4 PSIG

WATER DISTRIBUTION SIZING - COLD WATER

METER	60.4 PSIG			A		
	WSFU	PEX	FLUSH	30 FT	WSFU	PEX
EEW-1	3/4	16.5	6	25.84 PSIG/100'	3/4	16.5
SS-1	1/2	5	3	7.8 PSIG	1/2	5
MECH. RM. "116"	1/2	5	3	16.85 PSIG/100'	1/2	5
MECH. RM. "116"	1/2	5	3	16.9 PSIG	1/2	5

WATER DISTRIBUTION SIZING - HOT WATER

METER	60.4 PSIG			A		
	WSFU	PEX	FLUSH	100 FT	WSFU	PEX
EEW-1	3/4	16.5	6	16.85 PSIG/100'	3/4	16.5
SS-1	1/2	5	3	16.9 PSIG	1/2	5
MECH. RM. "116"	1/2	5	3	14.72 PSIG/100'	1/2	5
MECH. RM. "116"	1/2	5	3	14.72 PSIG/100'	1/2	5

GENERAL NOTES:

- SEE UNDERGROUND PLAN AND FIXTURE UNIT SCHEDULE FOR RUNOUT TRAP SIZE TO FIXTURE.
- SEE FIXTURE UNIT SCHEDULE THIS SHEET FOR RUNOUT PIPING SIZE TO FIXTURE.
- AIR ADMITTANCE VALVES NOT PERMITTED (I.E. STUDOR VENT).
- IF PEX IS USED IN LIEU OF COPPER, P.C. SHALL PROVIDE COMPLETE MATERIAL SUBMITTALS (PIPE, FITTINGS, ETC.) TO ASPEN DENTAL MANAGEMENT INC. FOR APPROVAL PRIOR TO INSTALLATION.
- P.C. SHALL PERFORM FIVE HYDRANT FLOW TEST TO VERIFY WATER PRESSURE INFORMATION PRIOR TO INSTALLATION OF ANY WATER PIPING. PROVIDE FLOW TEST INFORMATION TO EXCEL ENGINEERING AND ASPEN DENTAL MANAGEMENT INC. FOR EVALUATION.

EXCEL
ARCHITECTS • ENGINEERS • SURVEYORS
Always a Better Plan
100 Camelot Drive
Fond Du Lac, WI 54935
Phone: (920) 926-9800
www.EXCELENGINEER.com

COLLABORATION
AspenDental

PROJECT INFORMATION

TENANT BUILD-OUT FOR:
ASPEN DENTAL
~12150 FRONTAGE ROAD • MURRELLS INLET, SC 29576

PROFESSIONAL SEAL

SHEET DATES

ISSUE DATE: MAR. 16, 2020

REVISIONS

JOB NUMBER

1860160

SHEET NUMBER

P2.0