

PROJECT INFORMATION

TENANT BUILD-OUT FOR:
ASPEN DENTAL
 ~12150 FRONTAGE ROAD • MURRELLS INLET, SC 29576

PROFESSIONAL SEAL

SHEET DATES

ISSUE DATE: MAR. 16, 2020

REVISIONS

NO.	DATE	DESCRIPTION

JOB NUMBER

1860160

SHEET NUMBER

P1.2

DENTAL EQUIPMENT COORDINATION:

- PLUMBING CONTRACTOR SHALL VERIFY TYPE AND LOCATION OF ALL DENTAL EQUIPMENT, ROUGH-IN DIMENSIONS, AND REQUIRED PLUMBING CONNECTIONS. PLUMBING CONTRACTOR SHALL FURNISH AND INSTALL ALL FLOOR FIXTURES, FLOOR DRAINS, HUB DRAINS, WATER CLOSETS, LAVATOIRES AND FLOOR SINKS. DENTAL EQUIPMENT SUPPLIER SHALL FURNISH AND INSTALL ALL FIXTURES IDENTIFIED ON THEIR PLANS (WITH THE EXCEPTION OF THOSE IDENTIFIED ABOVE). DENTAL EQUIPMENT SUPPLIER SHALL INSTALL ALL DENTAL EQUIPMENT AND PROVIDE ALL FIXTURE TRAPS, SUPPLIES AND STOPS, ISOLATION VALVES, MIXING VALVES, ETC. AND MAKE FINAL CONNECTIONS TO DENTAL EQUIPMENT. PLUMBING CONTRACTOR SHALL MAKE FINAL CONNECTION TO AIR COMPRESSOR AND VACUUM SYSTEM. VERIFY ALL EQUIPMENT CONNECTIONS WITH ADMJ AND DENTAL EQUIPMENT SUPPLIER PRIOR TO INSTALLATION. PROVIDE ADDITIONAL CONNECTIONS AS REQUIRED. COORDINATE ALL WORK ACCORDINGLY.

GENERAL NOTES:

- ALL VACUUM LINES SHALL BE INSTALLED BELOW SLAB UNLESS OTHERWISE NOTED.
- TERMINATE COMPRESSED AIR LINES PER DENTAL EQUIPMENT DETAILS.
- COMPRESSED AIR SHALL BE INSTALLED ABOVE CEILING UNLESS OTHERWISE NOTED.
- FINAL CONNECTIONS TO AIR COMPRESSOR AND VACUUM SYSTEM BY PLUMBING CONTRACTOR.
- REFER TO SHEET U1.1 PRIOR TO ROUGH-IN OF FIXTURES.
- TERMINATION OF 1 1/2" VACUUM LINES TO BE REDUCED TO 1/2" FEMALE THREAD TYPICAL. FOR ALL UTILITY CENTERS, TERMINATION OF 1/2" AIR LINES TO BE 1/2" MALE THREAD WITH 3/8" COMPRESSION FITTING TYPICAL. ALL PLUMBING AND ELECTRICAL FOR UTILITY CENTER SHALL BE CONTAINED WITHIN 12" X 12" AREA IN FLOOR. SEE DENTAL EQUIPMENT DRAWINGS FOR FURTHER INFORMATION.
- PIPING IS TO BE CONCEALED. IF BUILDING CONSTRUCTION DOES NOT PERMIT CONCEALING PIPING, LOCATIONS AND ROUTING ARE TO BE APPROVED BY ARCHITECT/OWNER PRIOR TO INSTALLATION.

NOTE:

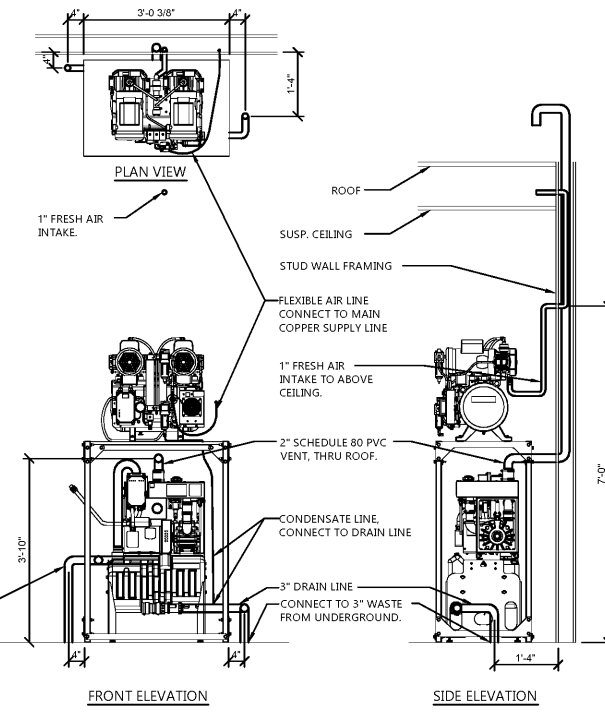
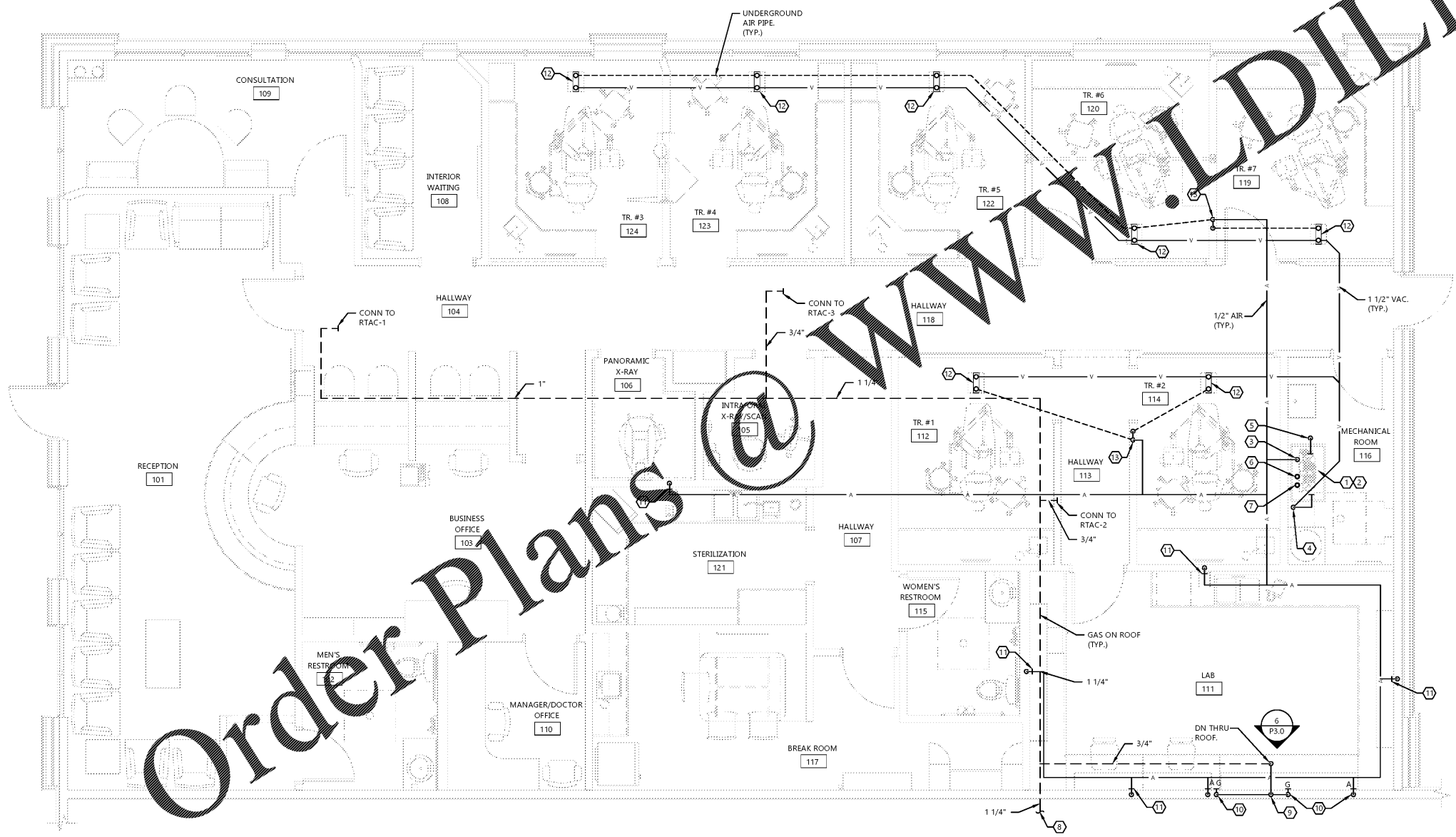
- PROJECT IS SEISMIC DESIGN CATEGORY "D". INSTALL ALL EQUIPMENT PER ASCE STANDARD CHAPTER 13.

- KEYNOTES:**
- AIR COMPRESSOR TO BE FURNISHED AND INSTALLED BY THE OWNER'S EQUIPMENT PROVIDER.
 - VACUUM EQUIPMENT TO BE FURNISHED AND INSTALLED BY THE OWNER'S EQUIPMENT PROVIDER. UNIT CONTAINS INTEGRAL AMALGAM SEPARATOR.
 - ROUTE 1/2" COMPRESSED AIR LINE ABOVE CEILING AND TRANSITION TO HORIZONTAL FOR DISTRIBUTION. VERIFY LINE SIZE AND CAPACITY REQUIREMENTS WITH TENANT AND EQUIPMENT MANUFACTURER PRIOR TO INSTALLATION.
 - ROUTE 1 1/2" VACUUM PIPING DOWN BELOW FLOOR FOR DISTRIBUTION.
 - ROUTE VACUUM DISCHARGE TO ADJACENT 3" HUB DRAIN AS SHOWN ON SHEET P1.1. DISCHARGE IN ACCORDANCE WITH PLUMBING CODE. SEE RAM-VAC DETAIL FOR MORE INFORMATION.
 - CONNECT 2" PVC TO VACUUM HEADS AND ROUTE TO V.T.R. TERMINATE ABOVE ROOF WITH GOOSENECK VENT. DO NOT JOIN WITH SANITARY VENT. MAINTAIN ALL CODE REQUIRED CLEARANCES ON THE ROOF. COORDINATE VTR LOCATION WITH MECHANICAL EQUIPMENT. SEE RAM-VAC DETAIL FOR MORE INFORMATION.
 - ROUTE 1" PVC UP ABOVE SUSPENDED CEILING FOR FRESH AIR INTAKE FOR AIR COMPRESSOR. INSTALL ABOVE DENTAL EQUIPMENT. DO NOT JOIN WITH SANITARY VENT. SEE RAM-VAC DETAIL FOR MORE INFORMATION.
 - ROUTE GAS PIPING IN ROOF 20" NORTH, 65" WEST AND DOWN EXTERIOR WALL TO UTILITY CENTER. COORDINATE METER INSTALLATION WITH UTILITY. METER PROVIDED BY UTILITY. G.C. SHALL SET UP ACCOUNT & COORDINATE METER INSTALLATION WITH LOCAL UTILITY. ACCOUNT SHALL BE TRANSFERRED TO ADMJ AT A LATER DATE.
 - ROUTE NEW 3/4" GAS LINE DOWN IN WALL TO RECESSED SHUTOFF BOX WITH VALVE. PROVIDE "WATTS" APU-9 10"x10" SPRING FIT ACCESS PANEL LABEL AS "GAS SHUTOFF". ROUTE GAS TO LAB WORK STATIONS AND PROVIDE 1/2" BRANCH LINES TO INDIVIDUAL LAB STATIONS. VERIFY ROUGH-IN LOCATION WITH TENANT REPRESENTATIVE. SEE LAB WORK STATION ELEVATION 3/P3.0. PROVIDE GAS PRESSURE REGULATOR AND EXTERIOR VENT IF REQUIRED PER OWNER FURNISHED EQUIPMENT (COORDINATE WITH OWNER AS REQUIRED).
 - PROVIDE 1/2" GAS LINE AND 1/2" AIR LINE STUBBED OUT AT LAB WORK STATION ELEVATION (SEE DETAIL 3/P3.0). PLUMBING CONTRACTOR TO MAKE FINAL CONNECTIONS.
 - PROVIDE 1/2" COMPRESSED AIR CONNECTION AT 44" A.F.F. SEE DETAIL 1/MD AIR VALVE DETAIL FOR ADDITIONAL REQUIREMENTS.
 - PROVIDE 1 1/2" VACUUM CONNECTION AND 1/2" COMPRESSED AIR CONNECTION TO UTILITY CENTER. STUB PIPING UP THROUGH FLOOR TO UTILITY CENTER ENCLOSURE FOR TERMINATION BY OWNER'S EQUIPMENT PROVIDER. SEE DETAIL 5/MD. PROVIDE CLOSED CELL INSULATION BETWEEN THE COPPER PIPING AND CONCRETE FLOOR.
 - ROUTE 1/2" COMPRESSED AIR PIPING DOWN THRU WALL AND BELOW FLOOR FOR DISTRIBUTION. PROVIDE CLOSED CELL INSULATION BETWEEN THE COPPER PIPING AND CONCRETE FLOOR.

GAS LOAD SUMMARY

ITEM	MBH INPUT	REQUIRED PRESSURE
RTAC-1	67	7" W.C.
RTAC-2	67	7" W.C.
RTAC-3	67	7" W.C.
LAB	2.4	7" W.C.
Total	203.4	

- GAS PRESSURE AT METER = 7" W.C.



RAM-VAC DETAIL
 NO SCALE

NORTH FLOOR PLAN - AIR AND VACUUM PIPING
 SCALE: 1/4" = 1'-0"