

**PROJECT INFORMATION**

TENANT BUILD-OUT FOR:  
**ASPEN DENTAL**  
 ~12150 FRONTAGE ROAD • MURRELLS INLET, SC 29576

**PROFESSIONAL SEAL**

**SHEET DATES**

ISSUE DATE MAR. 16, 2020

**REVISIONS**

NO.	DESCRIPTION

**JOB NUMBER**

1860160

**SHEET NUMBER**

**P1.1**

**DENTAL EQUIPMENT COORDINATION:**

PLUMBING CONTRACTOR SHALL VERIFY TYPE AND LOCATION OF ALL DENTAL EQUIPMENT, ROUGH-IN DIMENSIONS, AND REQUIRED PLUMBING CONNECTIONS. PLUMBING CONTRACTOR SHALL FURNISH AND INSTALL ALL FLOOR FIXTURES, FLOOR DRAINS, HUB DRAINS, WATER CLOSETS, LAVATORIES AND FLOOR SINKS. DENTAL EQUIPMENT SUPPLIER SHALL FURNISH AND INSTALL ALL FIXTURES IDENTIFIED ON THEIR PLANS (WITH THE EXCEPTION OF THOSE IDENTIFIED ABOVE). DENTAL EQUIPMENT SUPPLIER SHALL INSTALL ALL DENTAL EQUIPMENT AND PROVIDE ALL FIXTURE TRAPS, SUPPLIES AND STOPS, ISOLATION VALVES, MIXING VALVES, ETC. AND MAKE FINAL CONNECTIONS TO DENTAL EQUIPMENT. PLUMBING CONTRACTOR SHALL MAKE FINAL CONNECTION TO AIR COMPRESSOR AND VACUUM SYSTEM. VERIFY ALL EQUIPMENT CONNECTIONS WITH ADMI AND DENTAL EQUIPMENT SUPPLIER PRIOR TO INSTALLATION. PROVIDE ADDITIONAL CONNECTIONS AS REQUIRED. COORDINATE ALL WORK ACCORDINGLY.

**NOTE:**

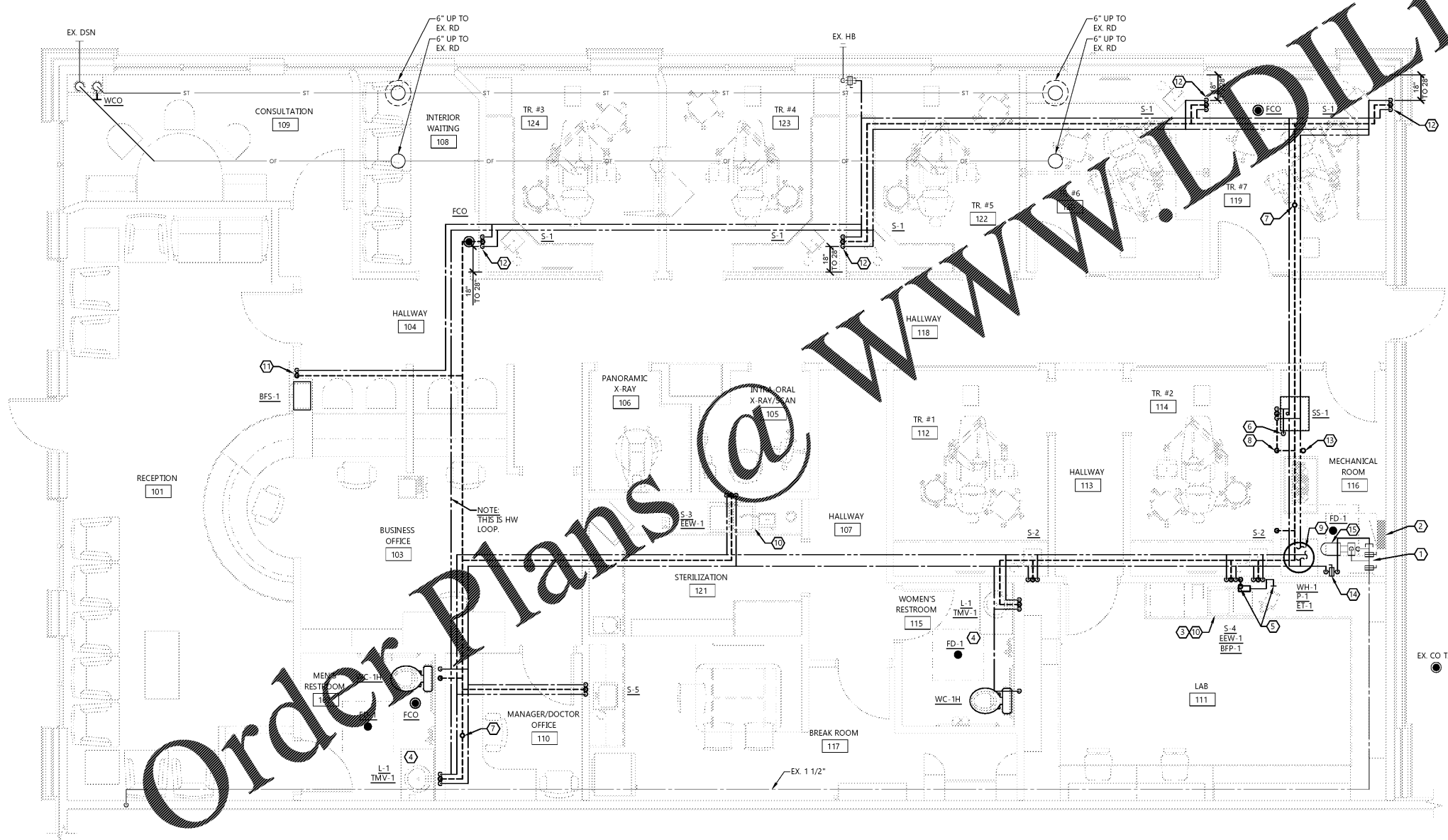
PROJECT IS SEISMIC DESIGN CATEGORY "D" - INSTALL ALL EQUIPMENT PER ASCE STANDARD CHAPTER 13.

**GENERAL NOTES:**

- PROVIDE ADDITIONAL BPP'S AS REQUIRED TO AT EQUIPMENT CONNECTIONS NOT SHOWN. FIELD VERIFY LOCATIONS AND REQUIREMENTS WITH EQUIPMENT CUT SHEETS.
- SINK FAUCETS SHALL BE INSTALLED WITH CONTROL AT THE LEFT, AND SPRAYER AT THE RIGHT OF THE SINK.
- REFLECTORS SHALL BE U-1 PRIOR TO ROUGH-IN OF FIXTURES.
- PIPE SIZES PROVIDED BY LANDLORD SHALL MATCH ISOMETRIC OF THESE DOCUMENTS. FIELD VERIFY AND COORDINATE WORK.
- PIPEWORK TO BE CONCEALED. IF BUILDING CONSTRUCTION DOES NOT PERMIT CONCEALING PIPING, LOCATIONS AND ROUTING ARE TO BE APPROVED BY ARCHITECT/OWNER PRIOR TO INSTALLATION.

**KEYNOTES:**

- CONNECT NEW DOMESTIC WATER TO EXISTING DOMESTIC COLD WATER TERMINATION AS PROVIDED BY LANDLORD. FIELD VERIFY EXACT ROUTING FROM EXISTING METER TERMINATION. C.C. SHALL SET UP ACCOUNT WITH LOCAL UTILITY & INSTALL UTILITY METER. ACCOUNT SHALL BE TRANSFERRED TO ADMI AT A LATER DATE.
- COORDINATE WITH ELECTRICAL CONTRACTOR TO MAINTAIN CODE REQUIRED CLEARANCES AROUND ELECTRICAL EQUIPMENT.
- PLASTER TRAP ASSEMBLY FURNISHED BY SULLIVAN SCHEIN AND INSTALLED BY THE PLUMBING CONTRACTOR ON THE SINK WASTE LINE. USE THREADED FITTINGS FOR DRAIN ASSEMBLY. SEE DETAIL # 6/M/D.
- ROUTE 1/2" CW FROM COLD WATER STOP UNDER LAVATORY TO AUTOMATIC TRAP PRIMER (TP-2) VALVE. ROUTE 1/2" CW FROM VALVE INTO WALL AND ROUTE UNDERFLOOR TO FLOOR DRAIN CONNECTIONS. SEE DETAIL 1/P3.0.
- PIPE 1/2" CW SUPPLY FROM SINK TO BFP-1 INSIDE CABINET BELOW SINK. PIPE IN WALL FROM BFP-1 TO 44" A.F.F. FOR CONNECTION TO MODEL TRIMMER. TERMINATE WITH 3/8" COMPRESSION STOP. INSTALL IN ACCORDANCE WITH LOCAL CODES. PROVIDE 2" HUB DRAIN (HD) INSIDE CABINET. DISCHARGE BFP TO HD VIA AIR GAP. ELIMINATE BFP AND HD IF PERMITTED BY AUTHORITY HAVING JURISDICTION. SEE DETAILS 9/M/D & 5/P3.0.
- 1/2" CW PIPING TO TRAP PRIMER (TP-1). ROUTE 1/2" CW PIPING DOWN WALL TO UNDERFLOOR. CONNECT PIPING UNDERFLOOR TO FLOOR DRAIN ASSEMBLY. SEE TRAP PRIMER DETAIL 2/P3.0.
- EXTEND 3" VENT UP TO VTR. COORDINATE VTR LOCATION WITH MECHANICAL CONTRACTOR AND EXISTING EQUIPMENT SERVING ADJACENT TENANT SPACE. ADJUST VTR LOCATION AS REQUIRED TO MAINTAIN A MINIMUM OF 20" CLEARANCE.
- ROUTE 3" VENT UP FROM SANITARY DRAIN SERVING VACUUM WASTE AND CONNECT TO VENT PIPING ABOVE CEILING. VENT SHALL SERVE AS BUILDING MAIN VENT.
- SEE WATER HEATER DETAIL 7/P3.0.
- INSTALL EEW-1 IN FOURTH HOLE OF SINK. SEE EEW DETAIL 6/P3.0.
- PROVIDE HUB DRAIN CONNECTION AT 16" A.F.F. AND WATER VALVE 20" A.F.F. OUT OF BFP-1 ROUGH IN CLEARANCE AREA. SEE BOTTLE FILLING STATION DETAIL 5/A5.2 FOR MORE INFORMATION.
- EXTEND WATER SUPPLY PIPING MINIMUM 6" INSIDE CABINET. TERMINATE WITH SUPPLY STOP. EXPOSED PIPING SHALL BE COPPER.
- CONNECT RAM-VAC TO 3" TRAPPED WASTE FROM UNDERGROUND.
- PROVIDE BALL VALVE AT 5' A.F.F. NO FIXTURES SHALL CONNECT TO CW UPSTREAM OF THIS VALVE. PROVIDE SIGN WHICH READS "WATER SHUTOFF".
- EXISTING PRESSURE BOOSTER PUMP W/ EXPANSION TANK ABOVE CEILING PROVIDED BY LANDLORD. P.C. SHALL FIELD VERIFY OUTLET PRESSURE SETTING AND ADJUST AS REQUIRED TO MATCH WATER CALCULATIONS ON SHEET P2.0.



**NORTH FLOOR PLAN**  
 SCALE: 1/4" = 1'-0"