

**PROJECT INFORMATION**

TENANT BUILD-OUT FOR:  
**ASPEN DENTAL**  
 ~12150 FRONTAGE ROAD • MURRELLS INLET, SC 29576

PROFESSIONAL SEAL

**SHEET DATES**

ISSUE DATE **MAR. 16, 2020**

**REVISIONS**

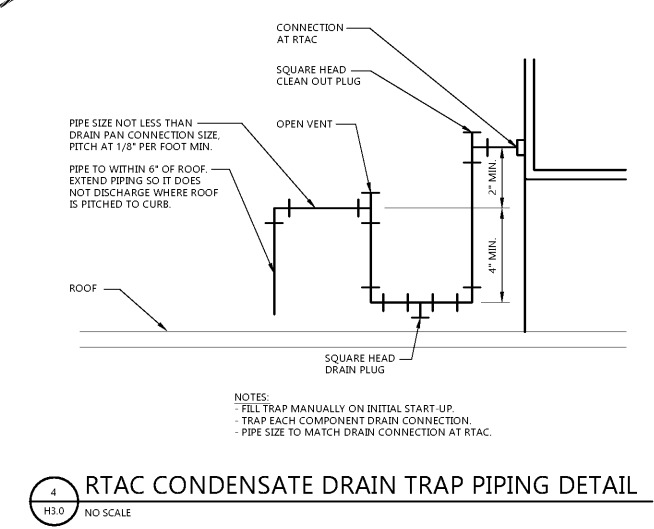
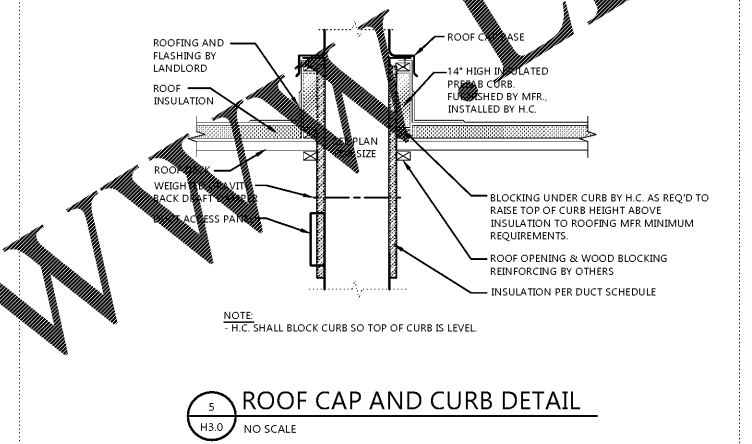
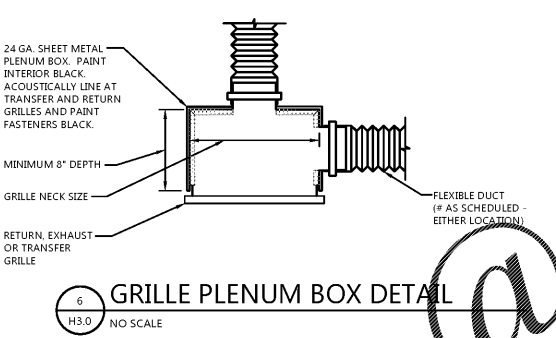
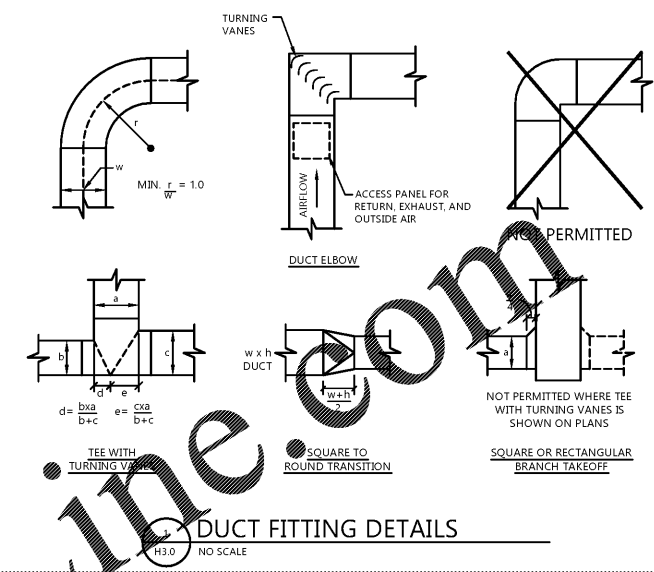
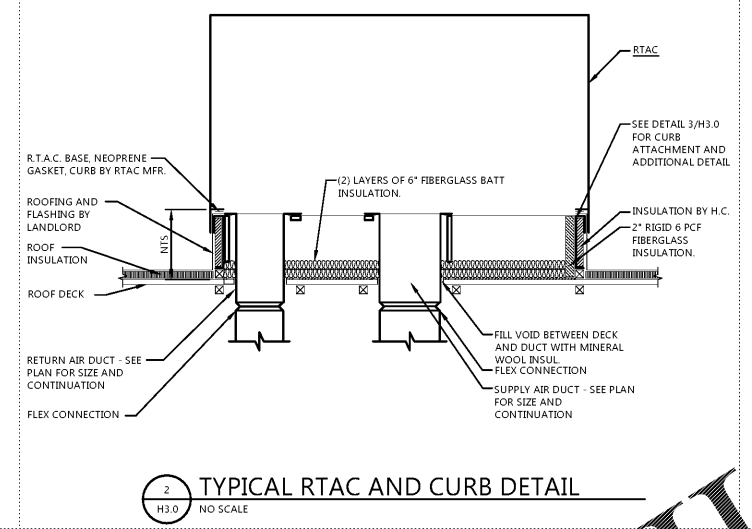
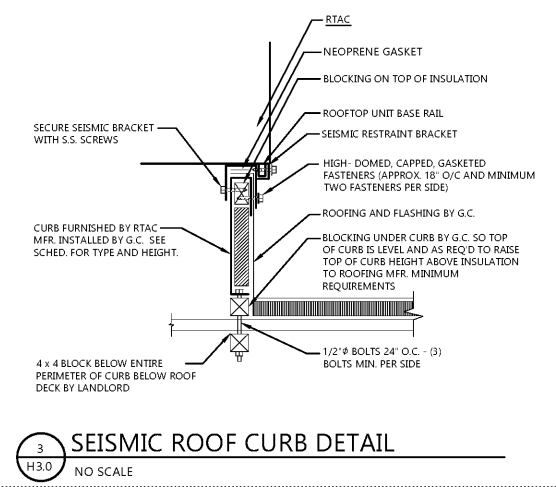
NO.	DESCRIPTION

**JOB NUMBER**

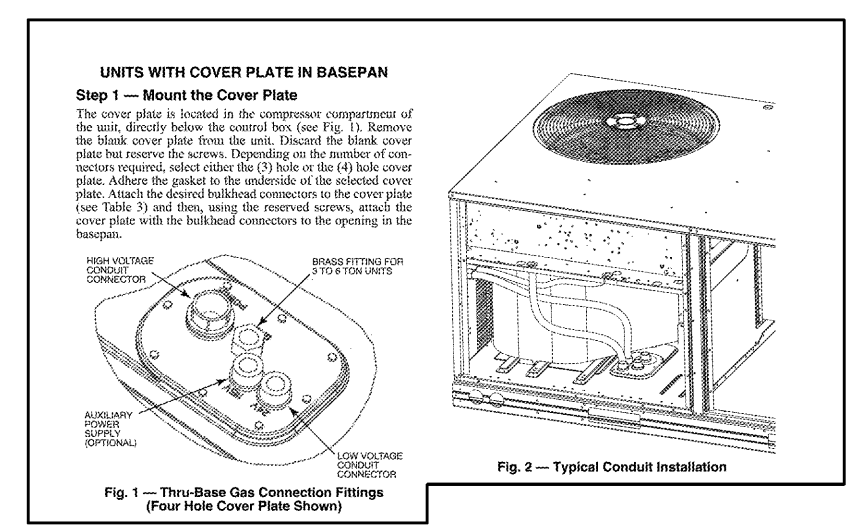
1860160

**SHEET NUMBER**

**H3.0**



Order Plans @



**Table 3 -- Hole Size Requirements**

COUPLING SIZE	USAGE	REQUIRED HOLE SIZE (MAX) (PRE-PUNCHED)
1/2-in.	24-v control wiring	7/8-in. (22.2 mm)
1/2-in.	115-v accessory wiring	7/8-in. (22.2 mm)
3/4-in.	High-voltage power wiring and accessory convenience outlet wiring (3 to 6 for units)	1 1/2-in. (28.0 mm)
1/2-in. NPT	Gas line	1 1/2-in. (28.0mm)

**Step 2 -- Run Wiring and Connect Conduit**

IMPORTANT: Liquid-tight conduit must be used on outdoor appliances.