

PROJECT INFORMATION

TENANT BUILD-OUT FOR:
ASPEN DENTAL
 ~12150 FRONTAGE ROAD • MURRELLS INLET, SC 29576

PROFESSIONAL SEAL

SHEET DATES

ISSUE DATE MAR. 16, 2020

REVISIONS

JOB NUMBER

1860160

SHEET NUMBER

H1.1

GENERAL NOTES

MAKE TRANSITION FROM DUCTWORK SIZES SHOWN ON THE DRAWINGS TO EQUIPMENT DUCT CONNECTION SIZES. VERIFY EQUIPMENT CONNECTION SIZES IN THE FIELD. ACTUAL EQUIPMENT SIZES SHALL TAKE PRECEDENCE OVER SIZES SHOWN ON PLANS.

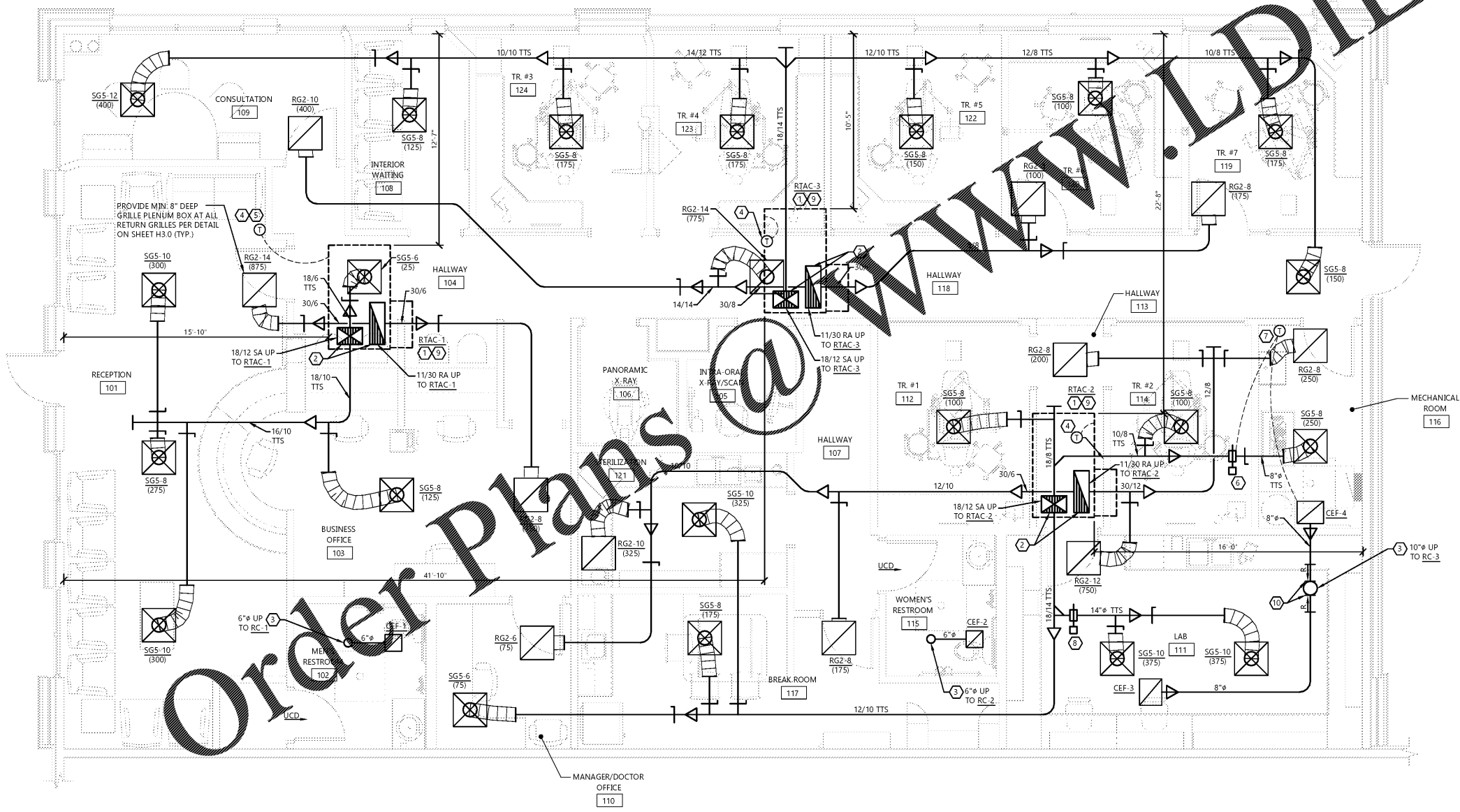
IF DUCT SYSTEMS ARE USED FOR TEMPORARY HEAT, PROVIDE TEMPORARY FILTERS AT RETURN AIR OPENINGS AND INSTALL FILTERS IN THE UNITS EQUIVALENT TO THE EFFICIENCY OF THE SPECIFIED FILTERS FOR THE UNIT. IF PROPER EFFICIENCY FILTERS ARE NOT INSTALLED IN UNIT, UNIT AND ALL DUCTWORK DOWNSTREAM OF UNIT SHALL BE CLEANED BEFORE TEST AND BALANCE.

COORDINATE GRILLE LOCATIONS WITH FINAL REFINISHED CEILING PLAN AND CORRESPONDING LIGHTING CONFIGURATION.

KEYNOTES

- ROOF TOP UNIT FOR NEW TENANT CONSTRUCTION. SEE RTAC SCHEDULE ON SHEET H4.0 FOR RESPONSIBILITY OF INSTALLATION.
- TRANSITION FROM RTAC SUPPLY AND RETURN DUCT SIZES TO SIZE SHOWN ON PLAN. TRANSITION SIZE IN VERTICAL IF TRANSITION CAN MEET SPECIFICATIONS. OTHERWISE, TRANSITION AFTER ELBOW. PROVIDE TURNING VANES IN DUCT ELBOWS OR TEES.
- COORDINATE BUILDING PENETRATION WITH LANDLORD. PROVIDE GRAVITY BACK DRAFT DAMPER BELOW ROOF DECK. EXHAUST OUTLET LOCATION MUST BE AT LEAST 10'-0" AWAY FROM ANY OUTSIDE AIR INTAKE.
- MOUNT PROGRAMMABLE THERMOSTAT AT 48" A.F.F. IN LOCATIONS AS SHOWN, UNLESS LOCAL CODE AUTHORITY WILL ALLOW A MOUNTING HEIGHT OF 60" A.F.F. THERMOSTATS SHALL BE CARIER EDGE PRO COMMERCIAL SERIES PROGRAMMABLE THERMOSTAT MODEL 33CS2PP25-03.
- PROVIDE A LOCKING COVER FOR THE THERMOSTAT LOCATED IN THE RECEPTION AREA. TURN OVER LOCKBOX KEYS TO ASPEN DENTAL MANAGEMENT UPON JOB COMPLETION.
- MOTOR OPERATED DAMPER WITH 120V, 2 POSITION SPRING RETURN, NORMALLY OPEN DAMPER ACTUATOR TO SERVE MECHANICAL ROOM. DAMPER: "GREENHECK" MODEL VCDR-53 OR EQUIVALENT. ACTUATOR: "BELIMO" MODEL TFB120 OR EQUIVALENT.
- HONEYWELL MODEL T651A OR EQUIVALENT REVERSE ACTING THERMOSTAT FURNISHED BY HVAC CONTRACTOR. CONDUIT AND WIRING PROVIDED BY ELECTRICAL CONTRACTOR. REFER TO SHEET E1.1P. TURN ON FAN AND CLOSE MECHANICAL ROOM MOTOR OPERATED DAMPER ON A RISE IN SPACE TEMPERATURE ABOVE SETPOINT. MOUNT THERMOSTAT AT 48" A.F.F. IN LOCATION AS SHOWN, UNLESS LOCAL CODE AUTHORITY WILL ALLOW A MOUNTING HEIGHT OF 60" A.F.F.
- MOTOR OPERATED DAMPER WITH 120V, 2 POSITION, SPRING RETURN, NORMALLY OPEN DAMPER ACTUATOR WIRED TO WALL SWITCH BY E.C. TO CLOSE DAMPER WHEN SWITCH IS "ON". DAMPER: "GREENHECK" MODEL VCDR-53 OR EQUIVALENT. ACTUATOR: "BELIMO" MODEL TFB120 OR EQUIVALENT.
- CONTRACTOR SHALL PROVIDE INTEGRAL WATER-LEVEL MONITORING DEVICE IN THE PRIMARY DRAIN PAN TO SHUT OFF THE EQUIPMENT PER IMC 307.2.3.1.
- EXHAUST AIR DUCT UP AT 45 DEG. INTO EXHAUST AIR DUCT UP TO ROOF CAP.

NOTE:
 PROJECT IS SEISMIC DESIGN CATEGORY "D" - INSTALL ALL EQUIPMENT PER ASCE STANDARD CHAPTER 13



NORTH FLOOR PLAN
 SCALE: 1/4" = 1'-0"