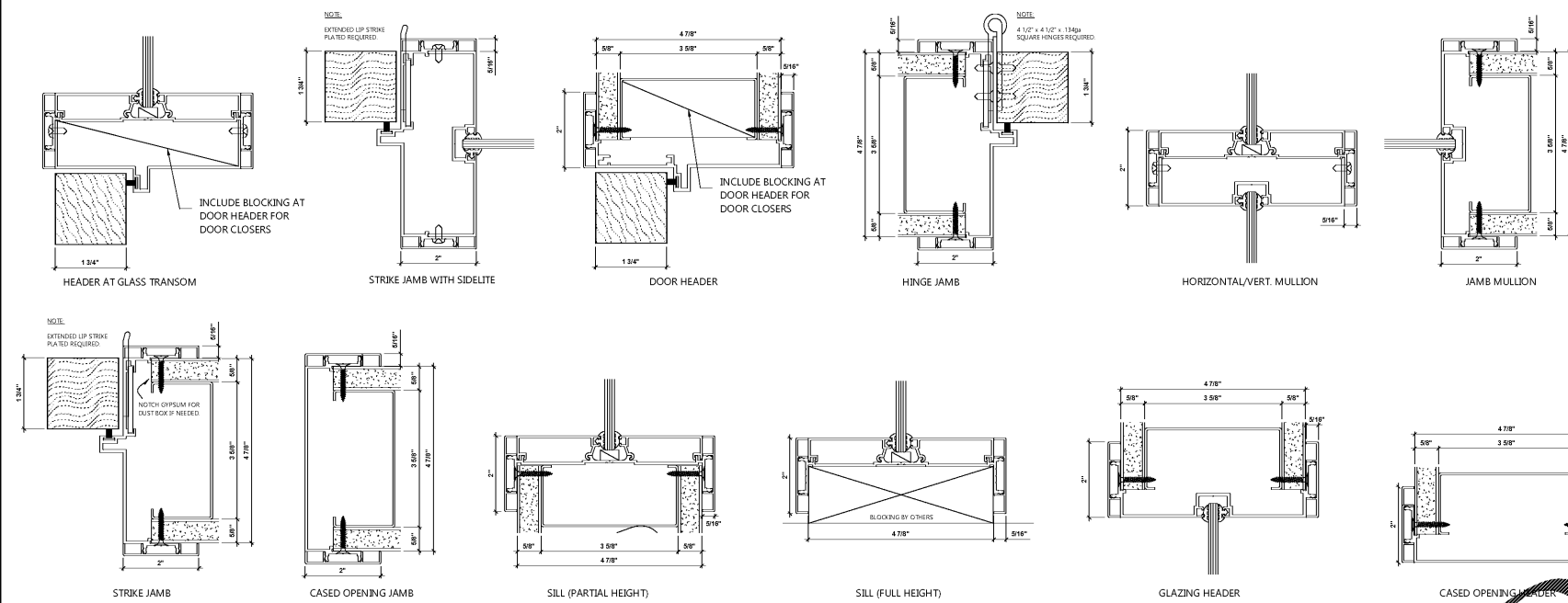


WILSON PARTITIONS FRAME DETAILS

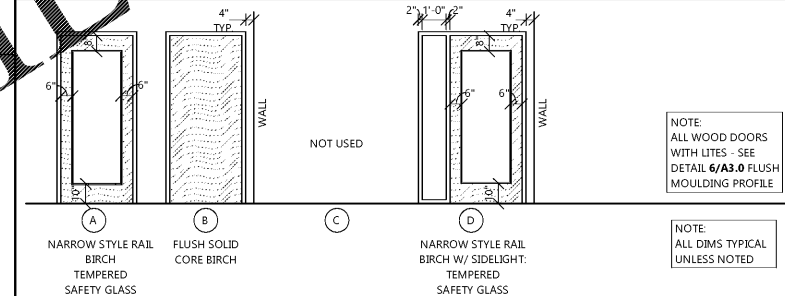


DOOR SCHEDULE

DOOR NUMBER	DOOR SIZE			DOOR TYPE	FRAME	HARDWARE			REMARKS
	WIDTH	HEIGHT	THICKNESS			TYPE	FINISH	TYPE	
101	3'-0"	7'-0"	1 3/4"	A	A	A	1	•	
102	3'-0"	7'-0"	1 3/4"	B	A	A	2	•	UNDERCUT 1"
109	3'-0"	7'-0"	1 3/4"	A	A	A	3	•	
110	3'-0"	7'-0"	1 3/4"	B	A	A	3	•	
111	3'-0"	7'-0"	1 3/4"	A	A	A	3	•	
115	3'-0"	7'-0"	1 3/4"	B	A	A	2	•	UNDERCUT 1"
116	3'-0"	7'-0"	1 3/4"	B	A	A	1	•	
117	3'-0"	7'-0"	1 3/4"	B	A	A	3	•	
119	3'-0"	7'-0"	1 3/4"	D	A	A	3	•	
120	3'-0"	7'-0"	1 3/4"	D	A	A	3	•	

DOOR REMARKS:
 (DOOR HARDWARE SHALL BE CAPABLE OF OPERATION WITH THE USE OF ONE (1) HAND AND SHALL NOT REQUIRE TIGHT PINCHING, TIGHT GRASPING OR TWISTING OF THE WRIST TO OPERATE. THUMB TURN DEADBOLTS ARE PROHIBITED UNLESS PROVIDED AT EXTERIOR (PER 1008.1.9.3 SUB 2.2) PROVIDE REDILY VISIBLE PERMANENT SIGNAGE ON OR ADJACENT TO DOOR STATING THIS DOOR TO REMAIN UNLOCKED WHEN BUILDING IS OCCUPIED - SEE SHEET A5.0 FOR SIGN DETAILS. LEVER OR PADDLE DOOR LOCKS SHALL RELEASE AND ACCEPTABLE. DOOR THRESHOLD SHALL NOT EXCEED 1/2" IN HEIGHT, THRESHOLDS EXCEEDING 1/4" IN HEIGHT SHALL HAVE A 1/2" BEVEL. DOOR CLOSERS SHALL MEET OPENING FORCE AND SWEEP PERIOD REQUIREMENTS.)
 PROVIDE TACTILE EXIT SIGNAGE AT ALL EXIT DOORS - SEE SHEET

DOOR TYPES

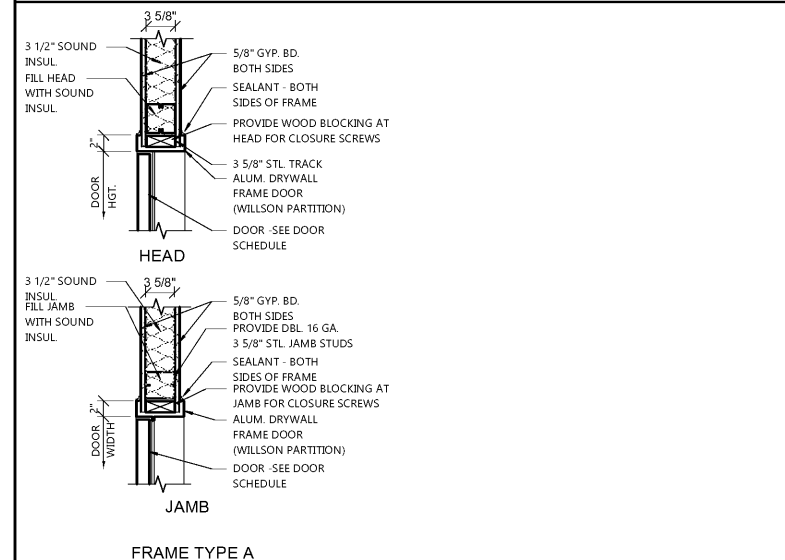


DOOR/FRAME TYPE SPECIFICATIONS
 FRAMES - WILSON PARTITIONS ALUMINUM FRAME OR EQUAL (SEE DOOR SCHEDULE ABOVE FOR DOOR SIZES)
 WILSON PARTITIONS ALUMINUM FRAME WITH 12" SIDELIGHT OR EQUAL (SEE DOOR SCHEDULE ABOVE FOR DOOR SIZES)
 DOORS - MASONITE ARCHITECTURAL DOOR; (SEE DOOR SCHEDULE ABOVE FOR SIZES & A6.1 FOR DOOR FINISHES)
 TYPE - VENEER 5, ROTARY BIRCH SELECT WHITE, CLEAR COAT - DOORS TO BE FACTORY PRE-FINISHED

HARDWARE TYPES

SET 1	SET 3
HAGER 3500 SERIES WITHNELL LEVER; HINGES: MCKINNEY, MPB79 4 1/2" x 4 1/2" 1/2 PAIR PER DOOR, CLOSER: HAGER 5200 US26D WALL STOP: ROCKWOOD 406US26D	HAGER 3500 SERIES WITHNELL LEVER; HINGES: MCKINNEY, MPB79 4 1/2" x 4 1/2", 1 1/2 PR. PER DOOR WALL STOP: ROCKWOOD 406US26D
SET 2 HAGER 3500 SERIES WITHNELL LEVER; HINGES: MCKINNEY, MPB79 4 1/2" x 4 1/2" 1/2 PAIR PER DOOR, CLOSER: HAGER 5200 US26D WALL STOP: ROCKWOOD 409US26D; GENDER SIGN (SEE SHEET A5.0) DEADBOLT: SCHLAGE B-571; FINISH: 626 (BRUSHED NICKEL)	SET 4 LATCHSET: HAGER 330D X US26 D DOOR KIT: HAGER 3630 HEAVY DUTY POCKET DOOR KIT DOOR FRAME: JOHNSON HARDWARE 153070PF
HARDWARE NOTES: 1. CONTRACTOR TO SUBMIT DETAILED HARDWARE SCHEDULE WITH COMPLETE CUT-SHEETS TO OWNER FOR FINAL APPROVAL. 2. HAGER 3500 SERIES WITHNELL ADA LEVER TYPE HARDWARE. 3. ALL LOCKSETS TO BE US26D FINISH. 4. EXTERIOR HARDWARE AS SELECTED BY OWNER TO BE HAGER 4500 SERIES WITH 45NL OUTSIDE TRIM IS US26D FINISH OR EQUAL DEADBOLT LOCK IF REQUIRED SHALL BE OPERATED BY KEY OUTSIDE AND THUMBTURN INSIDE (EXT. DOOR LOCATIONS ONLY). REUSE EXISTING IF APPLICABLE. 5. ALL CLOSERS NOTED IN HARDWARE SETS ABOVE TO BE MOUNTED ON INTERIOR ROOM SIDE.	

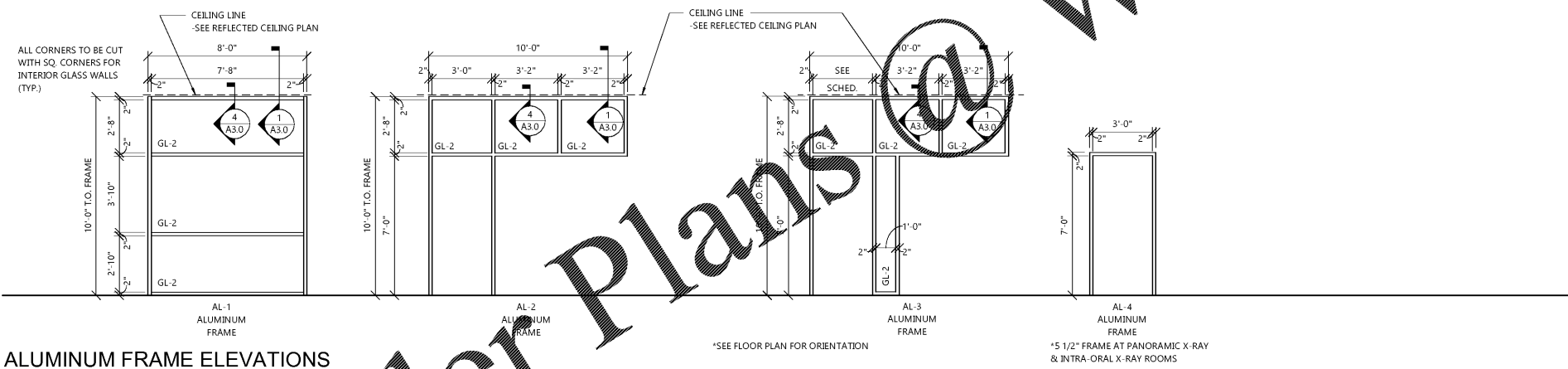
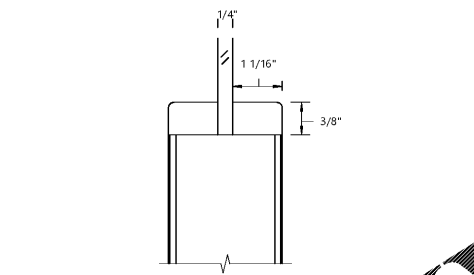
FRAME TYPES



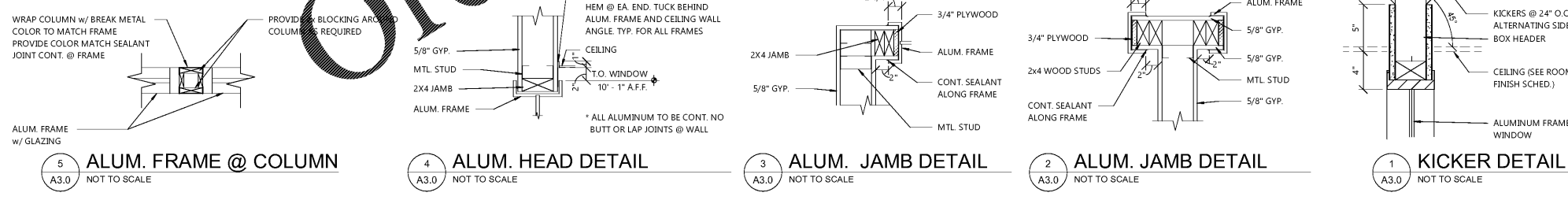
GLAZING SCHEDULE

GLAZING SHALL MEET THE FOLLOWING STANDARDS AND GUIDELINES AS APPLICABLE FOR EACH TYPE:
 -ASTM E 1300, ASTM C 110, ASTM C 1068, ASTM E 774
 -GANA GLAZING MANUAL
 -SIGMA TM 300 TECHNICAL GLAZING GUIDELINES
GL-2: CLEAR FLOAT GLASS, TEMPERED
 TYPE: TYPE CLASS 1 QUALITY CLEAR FLOAT GLASS, (FULLY TEMPERED), CONDITION A, 1/4" THICK

6 DOOR WOOD FLUSH MOLDING
 A3.0 NOT TO SCALE



ALUMINUM FRAME ELEVATIONS



5 ALUM. FRAME @ COLUMN A3.0 NOT TO SCALE
 4 ALUM. HEAD DETAIL A3.0 NOT TO SCALE
 3 ALUM. JAMB DETAIL A3.0 NOT TO SCALE
 2 ALUM. JAMB DETAIL A3.0 NOT TO SCALE
 1 KICKER DETAIL A3.0 NOT TO SCALE

EXCEL
 ARCHITECTS • ENGINEERS • SURVEYORS
 Always a Better Plan
 100 Camelot Drive
 Fond Du Lac, WI 54935
 Phone: (920) 926-9800
 www.EXCELENGINEER.com

COLLABORATION
AspenDental

PROJECT INFORMATION
 TENANT BUILD-OUT FOR:
ASPEN DENTAL
 ~12150 FRONTAGE ROAD • MURRELLS INLET, SC 29576

PROFESSIONAL SEAL

SHEET DATES
 SHEET ISSUE MAR. 16, 2020
 REVISIONS

JOB NUMBER
 1860160

SHEET NUMBER
A3.0