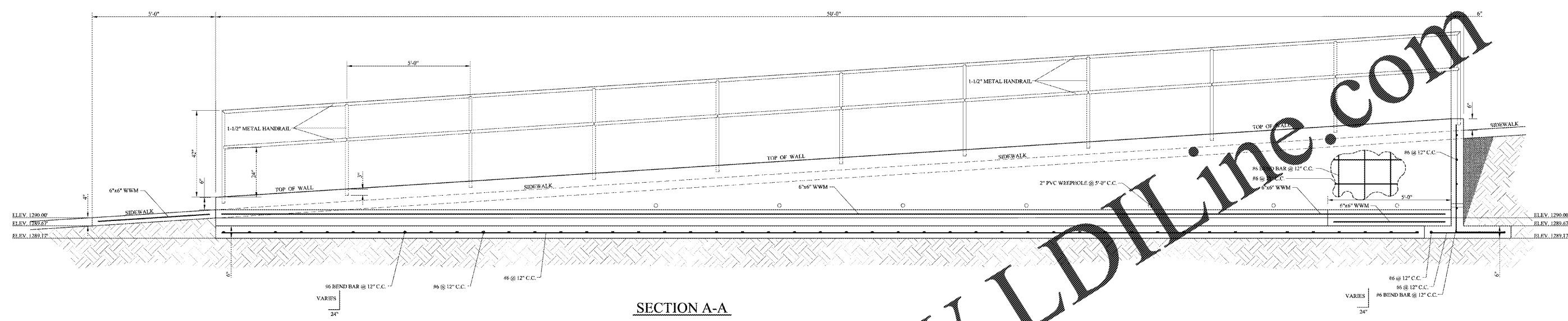
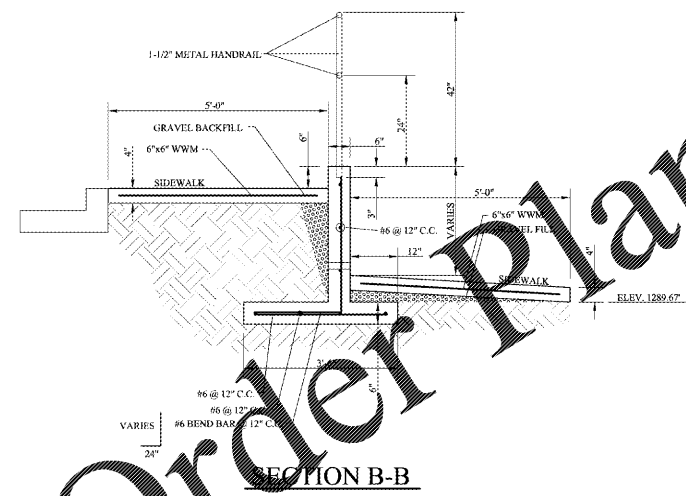


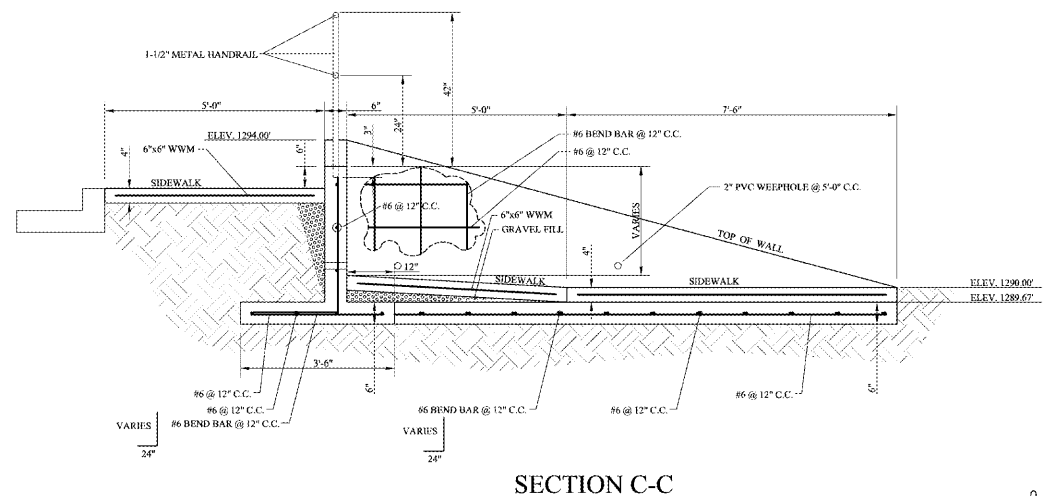
NO.	DATE	DESCRIPTION



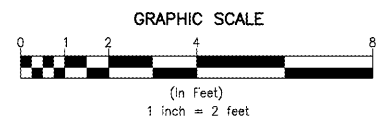
SECTION A-A



SECTION B-B



SECTION C-C



**PLAT ABBREVIATIONS**

- IP1 - Iron Pin Found
- IP2 - Iron Pin Set
- FP1 - Fence Post Set
- OT1 - Open Top Pipe
- CTP - Comp. Top Pipe
- Conc. - Concrete
- Alum. - Aluminum
- P/L - Property Line
- R/W - Right of Way
- C/L - Centerline
- F/L - Fenceline
- T/L - Transmission Line
- N/F - Now or Formerly
- DB - Dred Bank
- FB - Flag Book
- MF - Map File No.

**ENGINEER**  
 Gregory J. Dewberry, PE, LS  
 P.O. Box 156  
 Bremen, Georgia 30110  
 (770) 537-4087

Order Plans @ www.LDILine.com

INTERNATIONAL HOUSE OF PANCAKES  
 CONNECTING PARCEL SIDEWALK - CROSS-SECTIONS  
 HICKORY LEVEL ROAD AND GEORGIA HWY 61  
 VILLA RICA, CARROLL COUNTY, GEORGIA

CIVIL SOLUTIONS  
 ENGINEERING & LAND SURVEYING  
 Gregory J. Dewberry, PE, LS  
 P.O. Box 156  
 Bremen, Georgia 30110  
 (770) 537-4087

PROJECT NO. 2019154  
 DATE: MARCH 6, 2020  
 SCALE: 1" = 2'