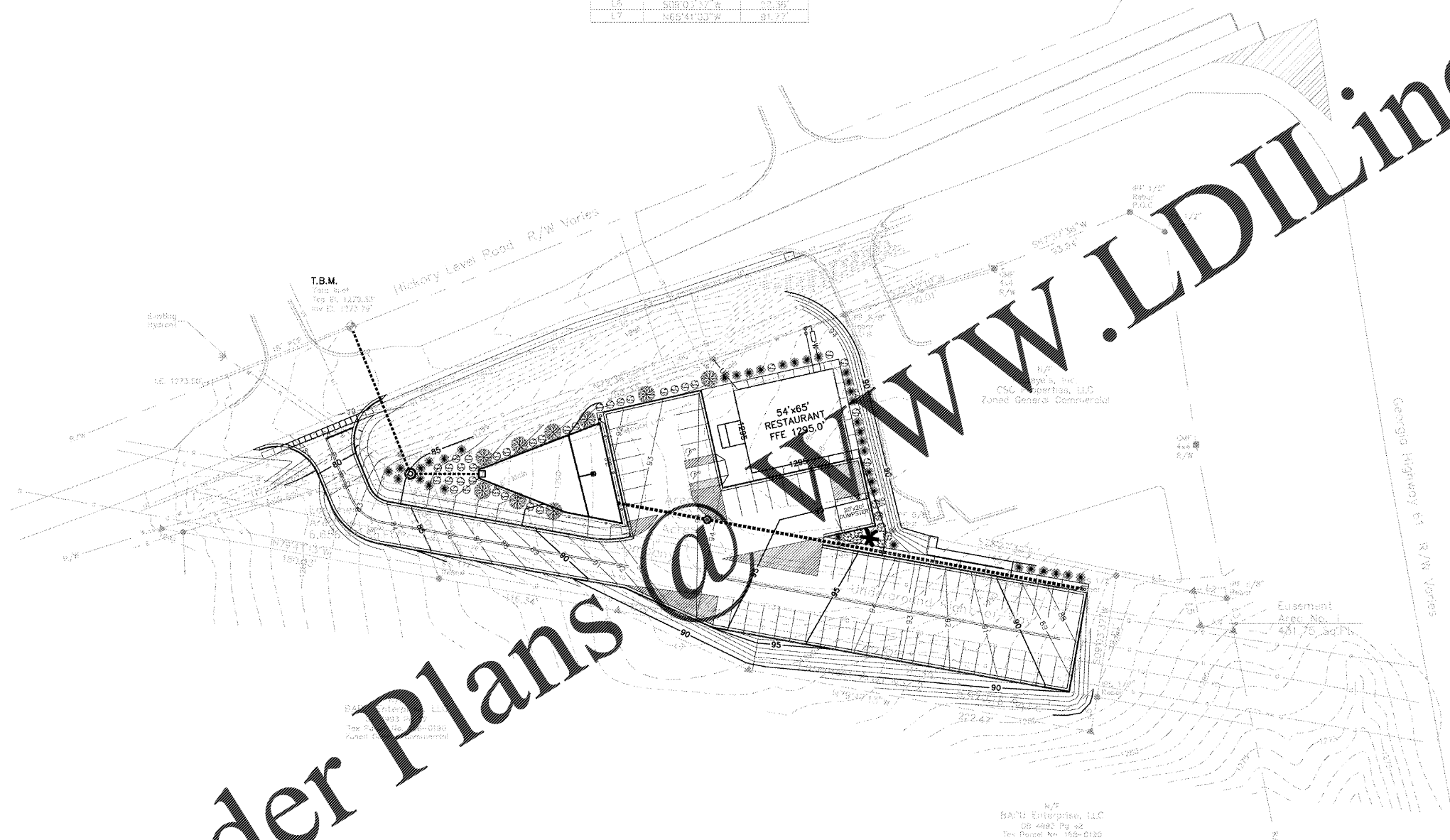




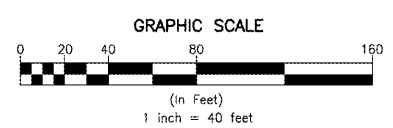
LINE	BEARING	LENGTH
L1	S78°27'33"E	50.39
L2	S78°27'33"E	21.71
L3	S11°21'45"E	21.47
L4	N88°59'42"W	71.34
L5	S11°21'45"E	22.45
L6	S11°21'45"E	52.89
L7	N69°41'03"W	91.77

GROUND COVERING	
	PINE STRAW OR BARK MULCH
	VIRGINIA PINE - <i>Pinus virginiana</i> 2.5 Inch Breast Height Diameter Planted Every 35 Linear Feet
	SOUTHERN WAX MYRTLE - <i>Myrica cerifera</i> 1.5 Inch Breast Height Diameter Planted Every 35 Linear Feet
	CAROLINA RHODODENTRON - <i>Rhododendron carolinianum</i> 5 Gallon Planted 3 Per 35 Linear Feet
	JAPANESE HOLLY - <i>Ilex crenata radicans</i> 3 Gallon Planted 10 Per 35 Linear Feet
	WARTY BARBERRY - <i>Berberis verrucosa</i> 3 Gallon Planted 10 Per 35 Linear Feet



Order Plans @ www.LDILine.com

PLAT ABBREVIATIONS	
IP1	- Iron Pin Found
IP2	- Iron Pin Set
FP1	- Fence Post Set
OT1	- Open Top Pipe
CT1	- Comp. Top Pipe
Covc.	- Concrete
Alum.	- Aluminum
P/L	- Property Line
R/W	- Right of Way
C/L	- Centerline
F/L	- Fence Line
T/L	- Transmission Line
N/F	- Now or Formerly
DB	- Dred Bank
FB	- Flag Book
MF	- Map File No.



CONTOUR LEGEND	
	Existing Contours
	Proposed Contours

ENGINEER
 Gregory J. Dewberry, PE, LS
 P.O. Box 156
 Bremen, GA 30110
 24hr. Emergency Phone
 (770) 537-4087

NO.	DATE	DESCRIPTION

INTERNATIONAL HOUSE OF PANCAKES
 LANDSCAPING PLAN
 HICKORY LEVEL ROAD AND GEORGIA HWY 61
 VILLA RICA, CARROLL COUNTY, GEORGIA

CIVIL SOLUTIONS
 ENGINEERING & LAND SURVEYING
 Gregory J. Dewberry, PE, LS
 P.O. Box 156
 Bremen, Georgia 30110
 (770) 537-4087

DATE: MARCH 6, 2020 SCALE: 1" = 40' PROJECT NO.: 2019154