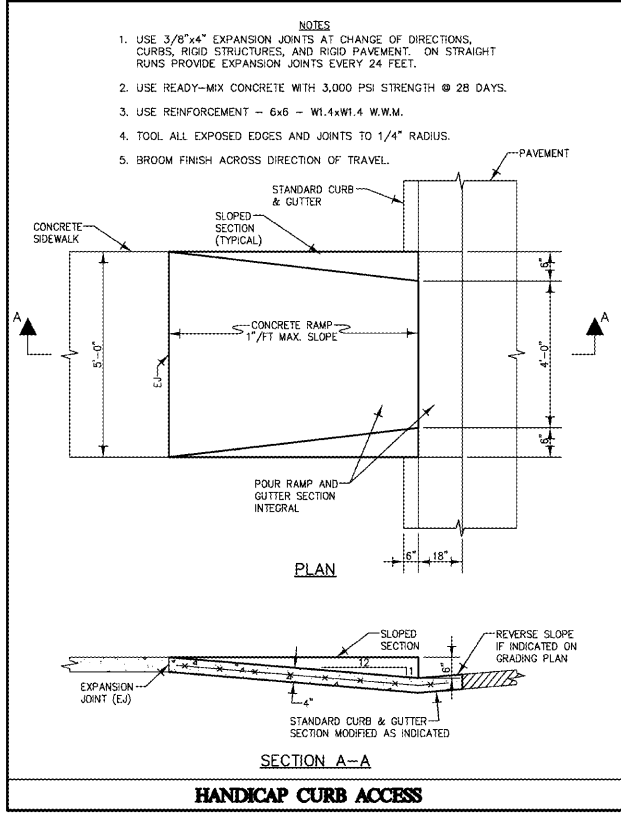
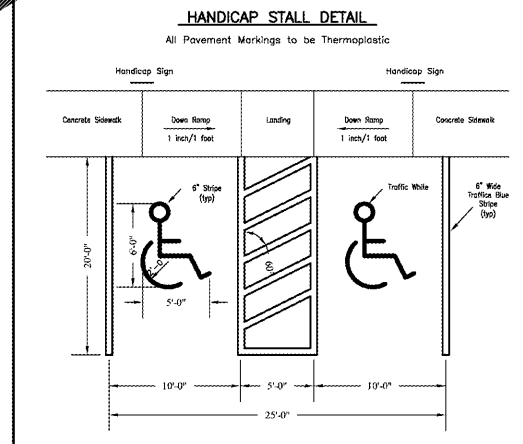
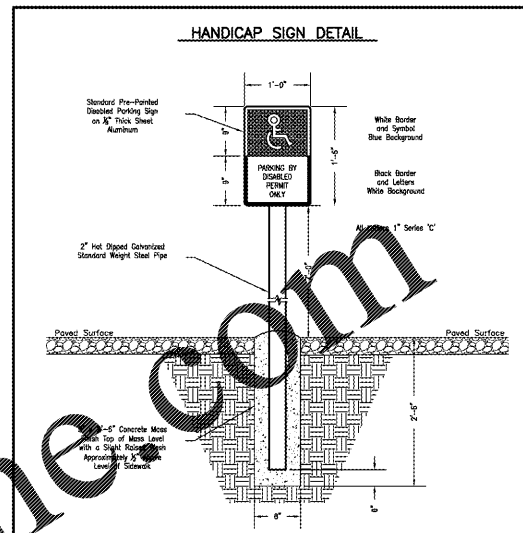
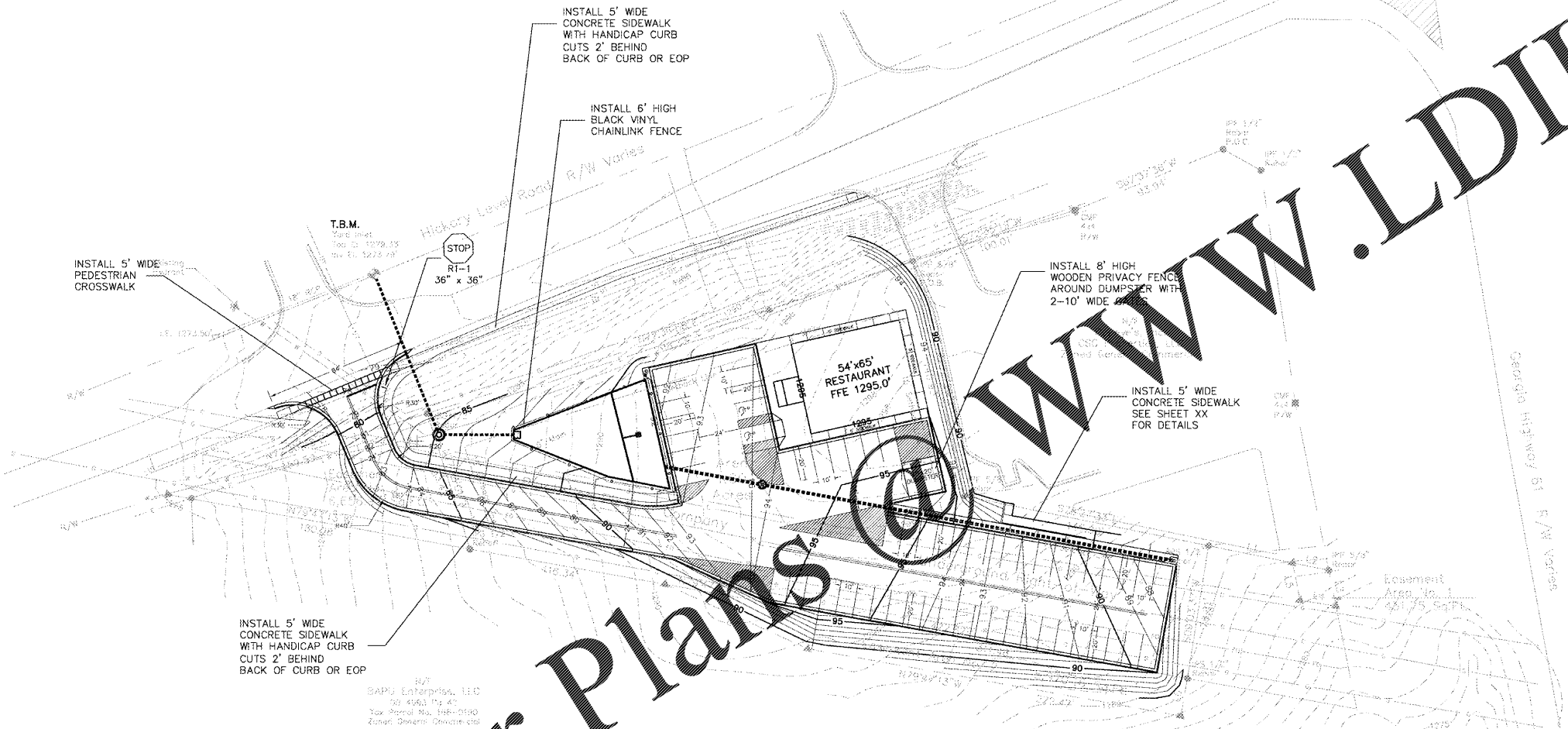




LINE	BEARING	LENGTH
1.1	S73°22'32"E	80.36'
1.2	S78°27'33"W	21.71'
1.3	S81°22'39"E	21.47'
1.4	N82°56'27"W	21.34'
1.5	N81°27'35"W	72.88'
1.6	S82°53'37"W	22.36'
1.7	N85°41'03"W	91.77'



- NOTES**
- USE 3/8"x4" EXPANSION JOINTS AT CHANGE OF DIRECTIONS, CURBS, RIGID STRUCTURES, AND RIGID PAVEMENT. ON STRAIGHT RUNS PROVIDE EXPANSION JOINTS EVERY 24 FEET.
  - USE READY-MIX CONCRETE WITH 3,000 PSI STRENGTH @ 28 DAYS.
  - USE REINFORCEMENT - 6x6 - W1.4xW1.4 W.W.M.
  - TOOL ALL EXPOSED EDGES AND JOINTS TO 1/4" RADIUS.
  - BROOM FINISH ACROSS DIRECTION OF TRAVEL.



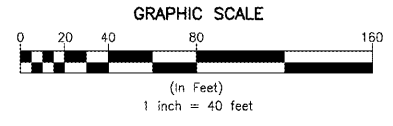
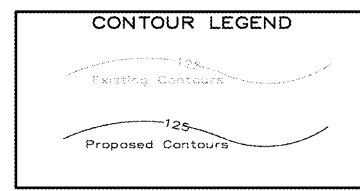
Order Plans @ [www.LDILine.com](http://www.LDILine.com)

**PLAT ABBREVIATIONS**

IPF	- Iron Pin Found
IPN	- Iron Pin Set
FPS	- Fence Post Set
OTF	- Open Top Pipe
CTP	- Comp Top Pipe
Conc.	- Concrete
Alum.	- Aluminum
P/L	- Property Line
R/W	- Right of Way
C/L	- Centerline
F/L	- Fenceline
T/L	- Transmission Line
N/F	- Now or Formerly
DB	- Dead Block
FB	- Flag Book
MF	- Map File No.

**REGISTERED PROFESSIONAL ENGINEER**

**Gregory J. Dewberry**  
P.O. Box 156  
Bremen, GA 30110  
24hr Emergency Phone (770) 537-4087



**11 SHEET**

NO.	DATE	DESCRIPTION
1	01-07-2020	REVISED PER COMMENTS
2	01-31-2020	REVISED PER COMMENTS
3	03-06-2020	REVISED PER COMMENTS

**INTERNATIONAL HOUSE OF PANCAKES**

**PARKING AND STRIPING PLAN**

HICKORY LEVEL ROAD AND GEORGIA HIGHWAY 61  
VILLA RICA, CARROLL COUNTY, GEORGIA

DATE: DECEMBER 2, 2019      SCALE: 1" = 40'      PROJECT NO. 2019154

**CIVIL SOLUTIONS ENGINEERING & LAND SURVEYING**

Gregory J. Dewberry, PE, LS  
P.O. Box 156  
Bremen, Georgia 30110  
(770) 537-4087

**SHEET 11**