

REVISIONS

NO.	DATE	DESCRIPTION
1	01-07-2020	REVISED PER COMMENTS
2	01-31-2020	REVISED PER COMMENTS
3	03-06-2020	REVISED PER COMMENTS

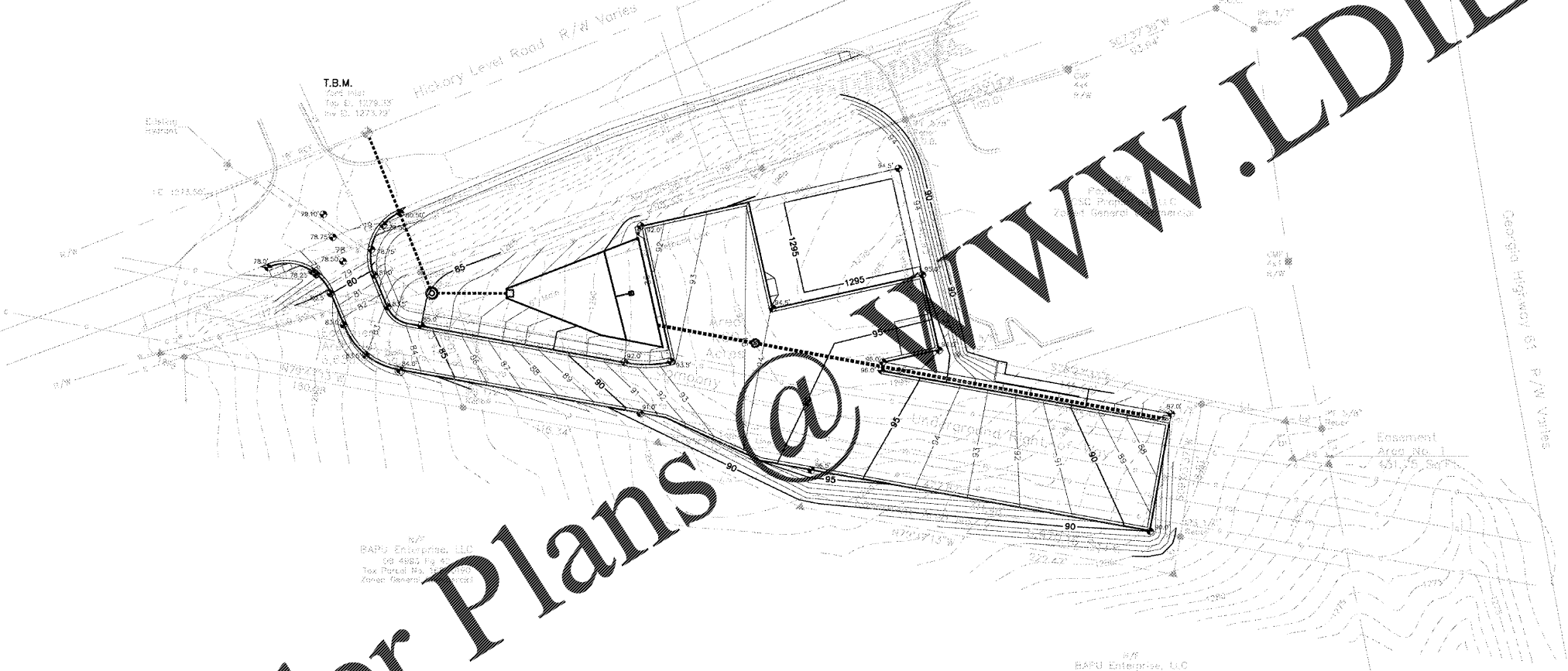
PROJECT NO. 2019154
SCALE: 1" = 40'

- Grading Specifications
- Soil backfill shall be free of debris, organic matter, or rock larger than 1/2 cubic foot.
 - Excavate to lines and levels indicated. If soil conditions permit, cut footing trenches to exact size of concrete and omit forms.
 - Earth excavation includes removal and disposal of material of unsatisfactory material.
 - Notify engineer/architect immediately if doubtful bearing is encountered.
 - Slope sides of excavations to comply with local codes and ordinances having jurisdiction. Shore and brace where sloping is possible because of space restrictions or stability of material excavated.
 - Prevent surface water and subsurface or ground water from flowing into excavations and from flooding project site and surrounding area.
 - Do not allow water to accumulate in excavations. Remove water to prevent softening of foundation bottoms, undermining footings, and soil changes detrimental to stability of subgrade and foundations.
 - Establish and maintain temporary drainage ditches and other diversions outside excavation limits to convey rainwater and water removed from excavations to collecting or runoff areas.
 - Conform to elevations and dimensions shown within a tolerance of 0.10' of published elevations.
 - Owner will select and provide testing service under separate contract to provide field quality control during earthwork execution.
 - Control soil compaction during construction providing minimum percentage of density specified.
 - Beneath building slabs and pavement, scarify and recompact top 8 inches of subgrade and each succeeding layer to 95 percent of maximum density.
 - For non-bearing areas, scarify and recompact top 8 inches of subgrade and each succeeding layer to 90 percent of maximum density.
 - Place fill materials in layers no more than 8 inches in loose depth for heavy compaction methods and 4" for hand tamping methods.
 - Uniformly grade areas within limits of grading including adjacent transition areas. Smooth finish surface within specified tolerances, compact with uniform levels or slopes between points where elevations are indicated.
 - Grade areas adjacent to building lines to drain away from structures and to prevent ponding. Finish surfaces free from irregular surface changes.
 - Locate existing underground utilities in areas of work.
 - Barricade open excavations and post with warning signs.
 - Protect utilities, sidewalks, pavements, and other facilities from damage caused by settlement, lateral movement, and washout.



LINE TABLE

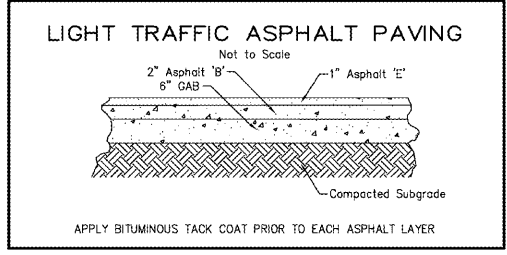
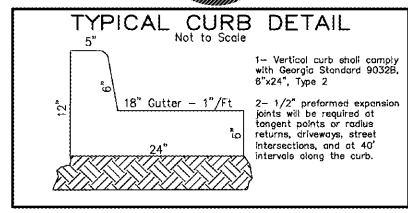
LINE	BEARING	LENGTH
1	S 88° 12' 34" E	56.32
2	S 78° 22' 34" E	21.41
3	S 112° 22' 34" E	21.47
4	N 88° 58' 21" W	21.35
5	N 112° 22' 34" W	22.48
6	S 78° 22' 34" W	22.37
7	N 88° 41' 34" W	91.77



Order Plans

PLAT ABBREVIATIONS

IPF	- Iron Pin Found
IPB	- Iron Pin Set
FPS	- Fence Post Set
OTF	- Open Top Pipe
CTP	- Comp Top Pipe
Conc.	- Concrete
Alum.	- Aluminum
P/L	- Property Line
R/W	- Right of Way
C/L	- Centerline
F/L	- Fenceline
T/L	- Transmission Line
N/F	- Now or Formerly
DB	- Dred Bank
FB	- Flat Book
MF	- Map File No.



Washout of the concrete drum at the construction site is prohibited.

