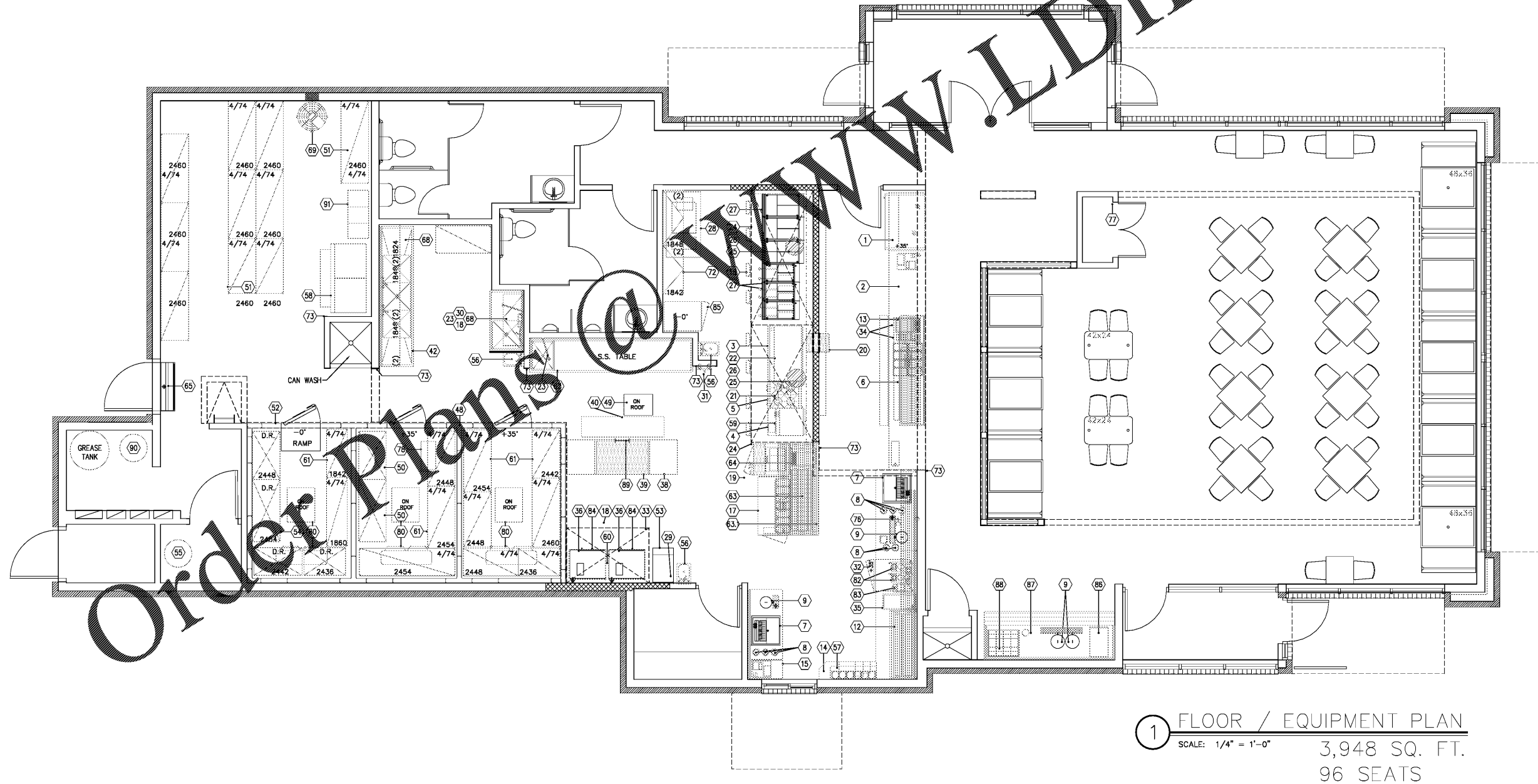


| MK. | QTY | DESCRIPTION                    | MANUFACTURE   | MODEL                            |
|-----|-----|--------------------------------|---------------|----------------------------------|
| 1   | 1   | REFRIGERATED DISPLAY CASE      | BEVERAGE AIR  | CDR4-1-W-20                      |
| 2   | 1   | HOT FOOD/BEVERAGE COUNTER      | FECO          | CUSTOM                           |
| 3   | 1   | MOBILE GRIDDLE STAND           | VULCAN        | 30X48                            |
| 4   | 1   | MOBILE GRIDDLE STAND           | FECO          | 24X24                            |
| 5   | 1   | MOBILE RANGE STAND             | FECO          | 24X30                            |
| 6   | 1   | DUAL HEAT LAMP w/LIGHT         | HATCO         | GRAHL-66D3                       |
| 7   | 2   | SODA TOWER w/ICE BIN (DROP-IN) | BY OTHERS     |                                  |
| 8   | 8   | CUP DISPENSERS                 | SAN JAMAR     | 4)C34000CV/(2)C34000F/(2)C35000V |
| 9   | 4   | TEA DISPENSER                  | AMERICAN      | 510                              |
| 10  | 4   | PAPER TOWEL DISPENSERS         | BY OTHERS     |                                  |
| 11  |     | - SPARE NUMBER-                |               |                                  |
| 12  | 2   | DUAL HEAT LAMP w/LIGHT         | HATCO         | GRAHL-38D3                       |
| 13  | 1   | DUAL HEAT LAMP w/LIGHT         | HATCO         | GRAHL-18D3                       |
| 14  | 1   | WORK TOP SHELF                 | FECO          | 1'-3"x4'-2"                      |
| 15  | 1   | CASHIER/BEVERAGE COUNTER       | FECO          | 2'-6"x6'-6"                      |
| 16  | 1EA | CORK TACK BOARD                | DAVENPORT     | 18X24/24X36                      |
| 17  | 1   | BISCUIT WRAP STATION           | FECO          | 4'2"x6'4"                        |
| 18  | 13  | TIMERS                         | PRINCE CASTLE | 840-T4                           |
| 19  | 1   | SANDWICH UNIT                  | DELFIELD      | 4427N-6                          |
| 20  | 1   | PASS-THRU SHELF                | FECO          | 1'-3"x1'-3"                      |
| 21  | 1   | FOUR-BURNER RANGE              | WELLS         | HDHP-2430-G                      |
| 22  | 1   | GRIDDLE                        | VULCAN        | 948RX                            |
| 23  | 2   | FILL FAUCET                    | T&S           | B-592                            |
| 24  | 2   | VENTILATION HOODS              | CAPTIVE-AIRE  | 4824ND-BR                        |
| 25  | 2   | EXHAUST FAN                    | CAPTIVE-AIRE  | NCA14FA                          |

| MK. | QTY | DESCRIPTION               | MANUFACTURE  | MODEL             |
|-----|-----|---------------------------|--------------|-------------------|
| 26  | 2   | ROOF EXHAUSTER CURBS      | CAPTIVE-AIRE | 30"x30"           |
| 27  | 3/2 | FRY KETTLE                | PITCO        | 18S/14S           |
| 28  | 1   | BREADING MACHINE          | AYR KING     | BB5-EC1-5730      |
| 29  | 1   | FIRE SYSTEM               | ANSUL        | UL300             |
| 30  | 1   | ONE COMPARTMENT SINK      | FECO         | 1-24X24-1DL       |
| 31  | 1   | HOSE STATION              | STRAHAM      | M-159             |
| 32  | 1   | UNDERCOUNTER REFRIGERATOR | DELFIELD     | 406               |
| 33  | 1   | VENTILATION HOOD          | CAPTIVE-AIRE | 4824VH1-ND        |
| 34  | 1   | FRENCH FRY SCOOP PAN      | FECO         | 16"x20"           |
| 35  | 1   | HOT WELL                  | APW          | TM43D             |
| 36  | 2   | CONVECTION OVEN           | BLODGETT     | DFG-52            |
| 37  |     | - SPARE NUMBER-           |              |                   |
| 38  | 1   | BAKER'S TABLE BASE        | FECO         | 2'6"x8'0"         |
| 39  | 1   | BAKER'S TOP(MAPLE)        | BALLY        | 2'6"x4'0"         |
| 40  | 1   | S/S TOP WORKTABLE         | FECO         | 1'6"x6'0"         |
| 41  |     | - SPARE NUMBER-           |              |                   |
| 42  | 1   | THREE COMPARTMENT SINK    | FECO         | 3-24X24-2D        |
| 43  |     | - SPARE NUMBER-           |              |                   |
| 44  | 16  | PULLMAN BOOTHS            | W/WOOD       | CUSTOM            |
| 45  | 22  | DINING CHAIRS             | KAYDEE       | 802-000           |
| 46  | 1   | TABLE TOP                 | LAMINATED    | 24X24/30X30/24X48 |
| 47  | 1   | LOT TABLE BASES           | KAYDEE       | 2015-3            |
| 48  | 1   | WALK-IN COOLER/COOLER     | BALLY        | 11'7"x23'1"x8'6"  |
| 49  | 1   | SUPPLY FAN                | CAPTIVE-AIRE | NSAU.2-G15        |
| 50  | 2   | CHICKEN CRATE VAT         | FECO         | 2'3"x5'0"         |

| MK.  | QTY | DESCRIPTION               | MANUFACTURE      | MODEL                |
|------|-----|---------------------------|------------------|----------------------|
| 51   | 7   | DRY STORAGE SHELVING      | METRO            | SUPER-ERECTA         |
| 52   | 1   | WALK-IN FREEZER           | BALLY            | PART OF ITEM 48      |
| 53   | 1   | DREDGE TABLE              | FECO             | 1'6"x2'6"            |
| 54   | 6   | DUNNAGE RACK              | WINHOLT          | 24X36/42/48/54/60/72 |
| 55   | 1   | WATER HEATER              | FECO             |                      |
| 56   | 3   | HAND SINK                 | METAL MASTERS    |                      |
| 57   | 2   | CONDIMENT WALL SHELVES    | FECO             | 11 1/4"x3'4 1/4"     |
| 58   | 2   | CUBE ICE MAKER/ONE (1)BIN | HOSHIZAKI/FOLLET | KM-1600MRF3/1475-60  |
| 59   | 1   | GRIDDLE                   | WELLS            | WG-2424G             |
| 60   | 1   | EXHAUST FAN               | CAPTIVE-AIRE     | DU33HFA              |
| 61   | 11  | COOLER/FREEZER SHELVING   | METRO            | METROSEAL            |
| 62   | 2   | HAND DRYERS               | BY OTHERS        |                      |
| 63   | 2   | DUAL HEAT LAMP w/LIGHT    | HATCO            | GRAHL-54D            |
| 63.1 | 2   | HEAT LAMP w/LIGHT         | HATCO            | GRAHL-54             |
| 64   | 1   | CONVEYOR TOASTER          | APW              | X PRESS              |
| 65   | 1   | INSECT CONTROL FAN        | MARS             | 42CH                 |
| 66   | 1   | DRY STORAGE SHELVING      | METRO            | NK2                  |
| 67   | 1   | ONE COMPARTMENT SINK      | FECO             | 1-18X24-1DL          |
| 68   | 14  | WALL-MOUNTED SHELF        | METRO            | CHROME WALL SHELVES  |
| 69   | 1   | FILTER MACHINE            | MIES             | G-100                |
| 70   | 1   | MARINATOR                 | FALCON           | FFM-1                |
| 71   |     | - SPARE NUMBER-           |                  |                      |
| 72   | 4   | WALL-MOUNTED SHELF        | METRO            | CHROME WALL SHELVES  |
| 73   | 9   | WALL CAPS & CORNER GUARDS | FECO             | CUSTOM               |
| 74   |     | - SPARE NUMBER-           |                  |                      |

| MK. | QTY | DESCRIPTION          | MANUFACTURE | MODEL                  |
|-----|-----|----------------------|-------------|------------------------|
| 75  |     | - SPARE NUMBER-      |             |                        |
| 76  | 1   | GLASS FILLER         | T&S         | B-1210                 |
| 77  | 3   | FIRE EXTINGUISHER    | BY OTHERS   |                        |
| 78  | 1   | SINK HEATER          | HATCO       | C-9                    |
| 79  | 1   | WATER CONDITIONER    | BY OTHERS   |                        |
| 80  | 1   | REFRIGERATION SYSTEM | BALLY       | PART OF ITEM 48 AND 52 |
| 81  |     | - SPARE NUMBER-      |             |                        |
| 82  | 2   | COFFEE BREWER        | BY OTHERS   |                        |
| 83  | 1   | COFFEE GRINDER       | BY OTHERS   |                        |
| 84  | 2   | OVEN STANDS          | FECO        | 26x28                  |
| 85  | 1   | REACH-IN FREEZER     | DELFIELD    | 6125X-S                |
| 86  | 1   | ICE DISPENSER        | REMCOR      | D45                    |
| 87  | 1   | BEVERAGE COUNTER     | FECO        | L18TOM                 |
| 88  | 1   | CONDIMENT DISPENSER  | CAMBRO      | 18S12                  |
| 89  | 1   | ROLLING PIN RACK     | FECO        | 18                     |
| 90  | 1   | CO2                  |             |                        |
| 91  | 1   | B'N'B                |             |                        |



① FLOOR / EQUIPMENT PLAN  
 SCALE: 1/4" = 1'-0"  
 3,948 SQ. FT.  
 96 SEATS

**R-2002**

| DATE     | RELEASE FOR CONSTRUCTION |
|----------|--------------------------|
| 04.30.20 |                          |

CHECKED BY: RZ  
 DRAWN BY: W.A.A.C.

© 2020 AKA STUDIO, P.C. THESE DRAWINGS AND DESIGN ARE PROTECTED BY THE COPYRIGHT LAWS OF THE UNITED STATES. THESE DRAWINGS OR ANY PART THEREOF MAY NOT BE USED FOR ANY PURPOSES OR REPRODUCED IN ANY FORM OR BY ANY MEANS WITHOUT THE WRITTEN CONSENT OF AKA STUDIO, P.C.

**RESTAURANT FOR:  
 NEW GENERATION FOODS, LLC  
 P.O. BOX 736  
 ATHENS, AL 35612  
 TEL. (256) 729-9136**

**AKA STUDIO, PC**  
 Architects & Interiors  
 74 WOODSTOCK ROAD, ROSWELL, GA 30075  
 (770) 642-9030 info@akastudio.com



J.E. BRISCOE WAY & MADISON BLVD. PROJECT: R-2002  
 MADISON, MADISON COUNTY ALABAMA DATE: 04/30/20

**Bojangles' RESTAURANT**  
 EQUIPMENT PLAN

**EQ-1**