

HARDWARE SCHEDULE

HWDR. CODE	QTY	ITEM	MANUFACT.	PRODUCT/ MODEL No.	COLOR NAME /No.	DESCRIPTION/REMARKS
HW-1 DOOR: 1,2,3,4&5	1	CONTINUOUS GEAR HINGE	KAWNEER	---	BRASS FINISH	BY STOREFRONT MANUFACTURER
	1	ROUND PUSH BAR WITH THUMB LOCK ON ALL EXTERIOR DOORS	KAWNEER	---	BRASS FINISH	BY STOREFRONT MANUFACTURER SEE NOTE #2 BELOW,
	1	CLOSER - GRADE I	KAWNEER	---	BRASS FINISH	BY STOREFRONT MANUFACTURER
	1	WEATHER STRIPPING	KAWNEER	---	MANUF. STANDARD	BY STOREFRONT MANUFACTURER
	1	HALF THRESHOLD FOR TILE FLOORS	KAWNEER	---	MILL ALUM.	BY STOREFRONT MANUFACTURER
	1	WALL STOP	IVES	WS447	BRASS FINISH	
	1	CYLINDER	TBD BY OTHERS	---	---	
HW-3 DOOR: 9,10	1	DOOR BOTTOM SWEEP	KAWNEER	---	---	BY STOREFRONT MANUFACTURER
	3	BUTT HINGES - 4 1/2" x 4 1/2"	HAGER	BB1279	BRASS FINISH	
	1	PUSH PLATE	HAGER	30S 8x16	630	
	1	DOOR PULL	HAGER	33E 4x16	630	
	1	CLOSER	CORBIN RUSSWIN	DC6200	696	INSTALL ON PULL SIDE OF DOOR
	1	WALL STOP	IVES	WS449	BRASS FINISH	
	3	DOOR SILENCERS	IVES	SR64	GREY	
HW-4 DOOR: 8	1	KICK PLATE - 8" x 34"	IVES	8400	32D	
	3	BUTT HINGES - 4 1/2" x 4 1/2"	HAGER	BB1279	BRASS FINISH	
	1	PASSAGE LATCHSET	SARGENT, 7 LINE	7U15-BL	BRASS FINISH	
	1	CLOSER	CORBIN RUSSWIN	DC6200	696	INSTALL ON PULL SIDE OF DOOR
	1	WALL STOP	IVES	WS449	BRASS FINISH	
HW-5 DOOR: 13, 14	3	DOOR SILENCERS	IVES	SR64	GREY	
	1	KICK PLATE - 8" x 34"	IVES	8400	32D	
	1	CONTINUOUS GEAR HINGE	HAGER	780-224HD 79"	BR	
	1	PANIC SET - EXIT ONLY	CORBIN RUSSWIN	ED5200M M54	630	
	1	CLOSER W/ HOLD OPEN	CORBIN RUSSWIN	DC6210 A1	689	INSTALL ON PUSH SIDE OF DOOR
	1	ARMOR PLATE 42" x 42	IVES	8400	S32D	
	1	PANIC SET - EXIT ONLY	HAGER	4315	MILL ALUM.	
HW-6 DOOR: 6,7,11,12	1	CLOSER W/ HOLD OPEN	HAGER	8705	32D	
	1	ARMOR PLATE 42" x 42	PEMCO	PEMCO	628	
	3	BUTT HINGES - 4 1/2" x 4 1/2"	HAGER	BB1279	BRASS FINISH	
	1	STOREROOM LOCKSET	SARGENT, 7 LINE	217604-BL	BRASS FINISH	
	1	WALL STOP	IVES	WS401CVX	BRASS FINISH	

NOTE:
1. ALL HARDWARE IN RESTROOM/DINING ROOM TO BE BRASS FINISH.
2. PER CODE, ALL EXTERIOR DOORS TO BE UNLOCKED DURING BUSINESS HOURS.

DOOR SCHEDULE

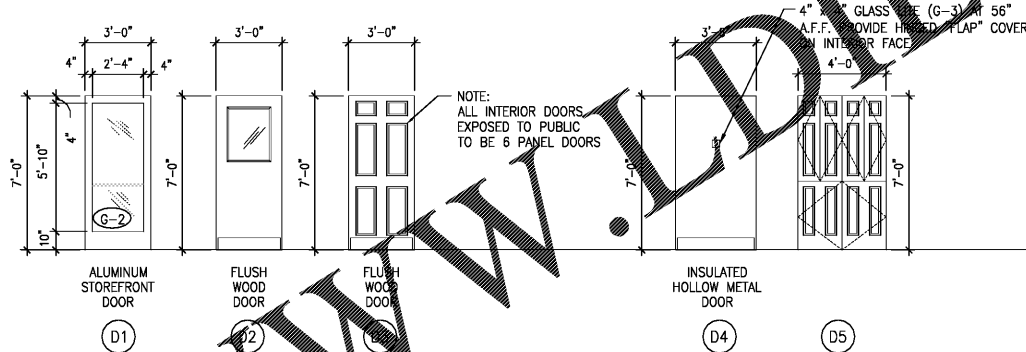
DOORS						FRAMES			
NUMBER	ROOM	SIZE	TYPE	MATERIAL	FINISH	TYPE	MATERIAL	FINISH	REMARKS
1	VESTIBULE	3'-0" x 7'-0"	D1	ALUM. STOREFRONT	DK. BRONZE	F1	ALUM. STOREFRONT	ANOD. DARK BRONZE	DOOR GLAZING TO BE G-2
2	VESTIBULE	3'-0" x 7'-0"	D1	ALUM. STOREFRONT	DK. BRONZE	F1	ALUM. STOREFRONT	ANOD. DARK BRONZE	DOOR GLAZING TO BE G-2
3	SIDE VESTIBULE	3'-0" x 7'-0"	D1	ALUM. STOREFRONT	DK. BRONZE	F2	ALUM. STOREFRONT	ANOD. DARK BRONZE	DOOR GLAZING TO BE G-2
4	VESTIBULE INTERIOR (2)	3'-0" x 7'-0"	D1	ALUM. STOREFRONT	DK. BRONZE	F3	ALUM. STOREFRONT	ANOD. DARK BRONZE	DOOR GLAZING TO BE G-2
5	DINING ROOM	3'-0" x 7'-0"	D1	ALUM. STOREFRONT	DK. BRONZE	F4	ALUM. STOREFRONT	ANOD. DARK BRONZE	DOOR GLAZING TO BE G-2
6	TRASH CLOSET	(2) 2'-0" x 7'-0"	D5	FLUSH WOOD	PL-1	F5	HOLLOW MTL.	LAMINATED DOORS	DOOR AND FRAME BY THE THOMAS GROUP
7	CLOSET	3'-0" x 7'-0"	D3	FLUSH WOOD	PL-1	F7	HOLLOW MTL.	LAMINATED DOORS	
8	SERVING AREA	3'-0" x 7'-0"	D3	FLUSH WOOD	PL-1	F7	HOLLOW MTL.	LAMINATED DOORS	
9	WOMEN	3'-0" x 7'-0"	D3	FLUSH WOOD	PL-1	F7	HOLLOW MTL.	LAMINATED DOORS	
10	MEN	3'-0" x 7'-0"	D3	FLUSH WOOD	PL-1	F7	HOLLOW MTL.	LAMINATED DOORS	
11	OFFICE	3'-0" x 7'-0"	D2	GALV. HOLLOW MTL.	PL-1	F7	HOLLOW MTL.	LAMINATED DOORS	DOOR WITH 24"x30" WINDOW
12	ELECTRICAL ROOM	3'-0" x 7'-0"	D3	GALV. HOLLOW MTL.	PL-1	F7	HOLLOW MTL.	LAMINATED DOORS	
13	MECHANICAL ROOM	3'-8" x 7'-0"	D4	GALV. HOLLOW MTL.	P-1	F8	GALV. HOLLOW MTL.	P-1	
14	REAR / DELIVERY	3'-8" x 7'-0"	D4	GALV. HOLLOW MTL.	P-1	F8	GALV. HOLLOW MTL.	P-1	4x4 GLASS LITE (G-3) WITH COVER FLAP

DOOR NOTES

1. PROVIDE ALL DOORS AND FRAMES FOR SECURITY SYSTEM CONNECTIONS.
2. CARE SHALL BE TAKEN NOT TO SCRATCH OR MAR GLASS IN ANY FASHION. ANY FLAWED GLAZING WILL HAVE TO BE REPLACED PRIOR TO PROJECT CLOSE OUT.
3. ALL DOOR HARDWARE IS TO BE LEVER TYPE COMPLYING WITH THE AMERICANS WITH DISABILITIES ACT (ADA) AND ANY APPLICABLE STATE AND LOCAL ACCESSIBILITY CODES.
4. CONTRACTOR SHALL COORDINATE ALL HARDWARE KEYING WITH THE OWNER AND OBTAIN OWNER'S APPROVAL PRIOR TO PLACING HARDWARE ORDER.
5. ALL CLOSERS ARE TO BE INSTALLED ON THE INTERIOR SIDE OF DOORS, UNLESS OTHERWISE NOTED.
6. ALL INTERIOR DOOR OPENINGS ARE TO HAVE A DOUBLE 2x6 HEADER, TYPICAL.

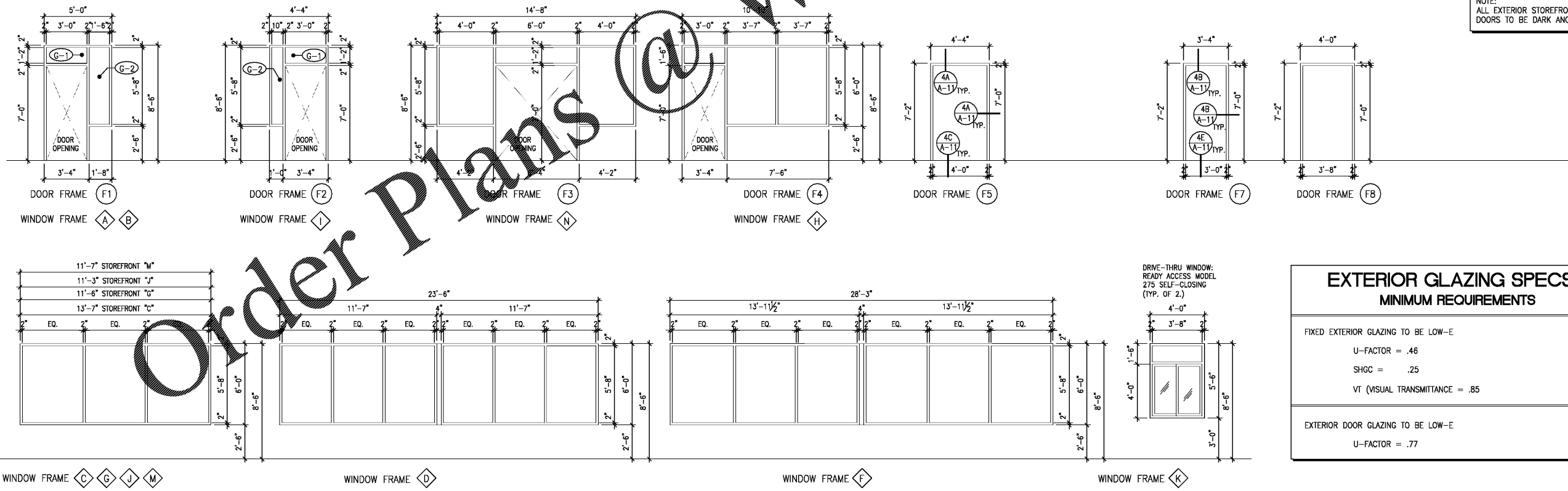
GLAZING SCHEDULE

G-1	1" INSULATED CLEAR GLASS UNIT (LOW-E)
G-2	1" INSULATED CLEAR FULLY TEMPERED GLASS UNIT (LOW-E)
G-3	1/4" WIRE GLASS



DOOR ELEVATIONS

NOTE:
ALL EXTERIOR STOREFRONT AND DOORS TO BE DARK ANODIZED COLOR



EXTERIOR GLAZING SPECS MINIMUM REQUIREMENTS

FIXED EXTERIOR GLAZING TO BE LOW-E

U-FACTOR = .46
SHGC = .25
VT (VISUAL TRANSMITTANCE) = .85

EXTERIOR DOOR GLAZING TO BE LOW-E

U-FACTOR = .77

R-2002

DATE	RELEASE FOR CONSTRUCTION
04.30.20	

CHECKED BY: RZ
DRAWN BY: W.A.A.C.

© 2020 AKA STUDIO, P.C. THESE DRAWINGS AND DESIGN ARE PROTECTED BY THE COPYRIGHT LAWS OF THE UNITED STATES. THESE DRAWINGS OR ANY PART THEREOF MAY NOT BE USED FOR ANY PURPOSES OR REPRODUCED IN ANY FORM OR BY ANY MEANS WITHOUT THE WRITTEN CONSENT OF AKA STUDIO, P.C.

**RESTAURANT FOR:
NEW GENERATION FOODS, LLC**

**P.O. BOX 736
ATHENS, AL 35612
TEL. (256) 729-9136**

AKA STUDIO, PC
Architects & Interiors

14 WOODSTOCK ROAD, ROSWELL, GA 30075
(770) 642-9030 info@akastudio.com



J.E. BRISCOE WAY & MADISON BLVD. PROJECT: R-2002
MADISON, MADISON COUNTY ALABAMA DATE: 04/30/20

Bojangles RESTAURANT

DOOR AND WINDOW SCHEDULE

A-10