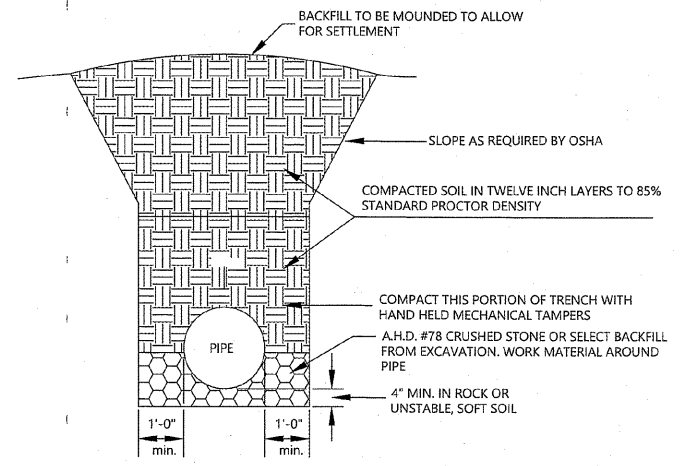


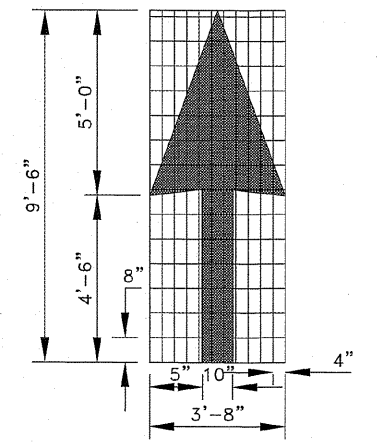
TYPICAL TRENCH DETAIL FOR STORM SEWERS WITHIN PAVEMENT AREA
NOT TO SCALE

7



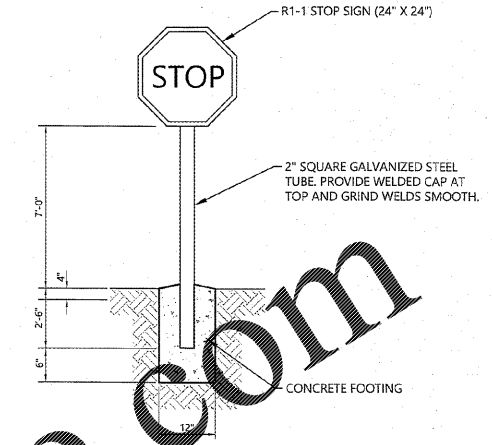
TYPICAL TRENCH DETAIL FOR STORM SEWERS IN NON-TRAFFIC AREAS
NOT TO SCALE

6



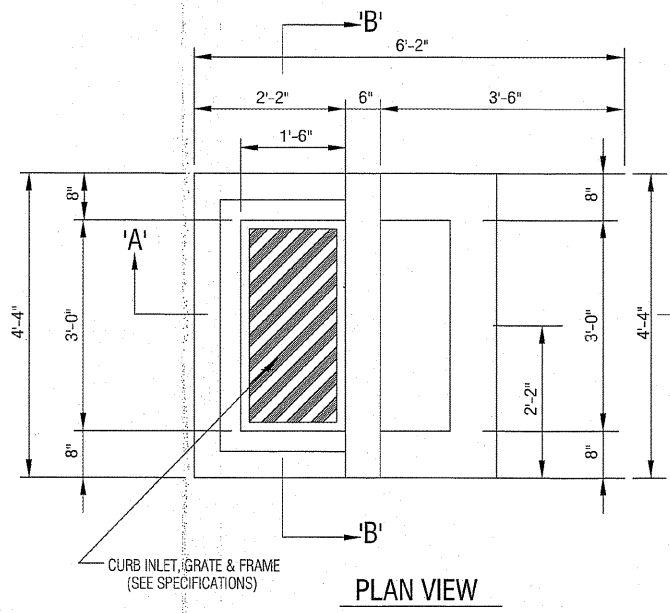
STRAIGHT ARROW DETAIL
ALL LEGENDS AND MARKINGS SHALL CONFORM TO THE LATEST M.U.T.C.D. AND ALL LEGENDS AND MARKINGS SHALL BE WHITE IN COLOR.

4

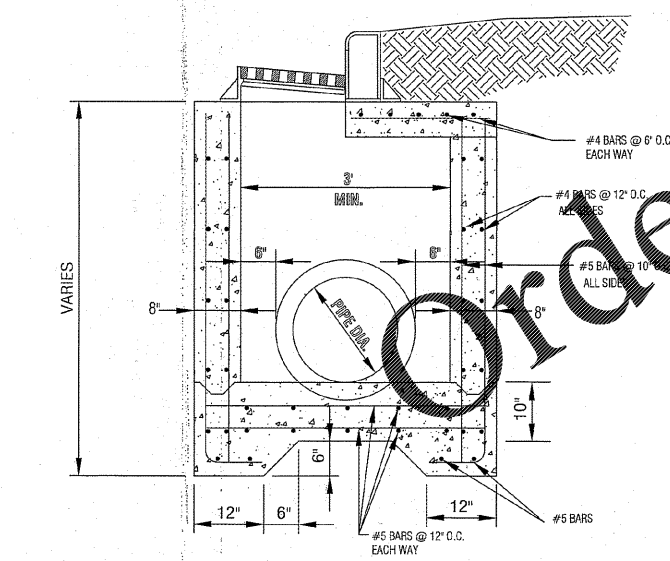


STOP SIGN
NO SCALE

1



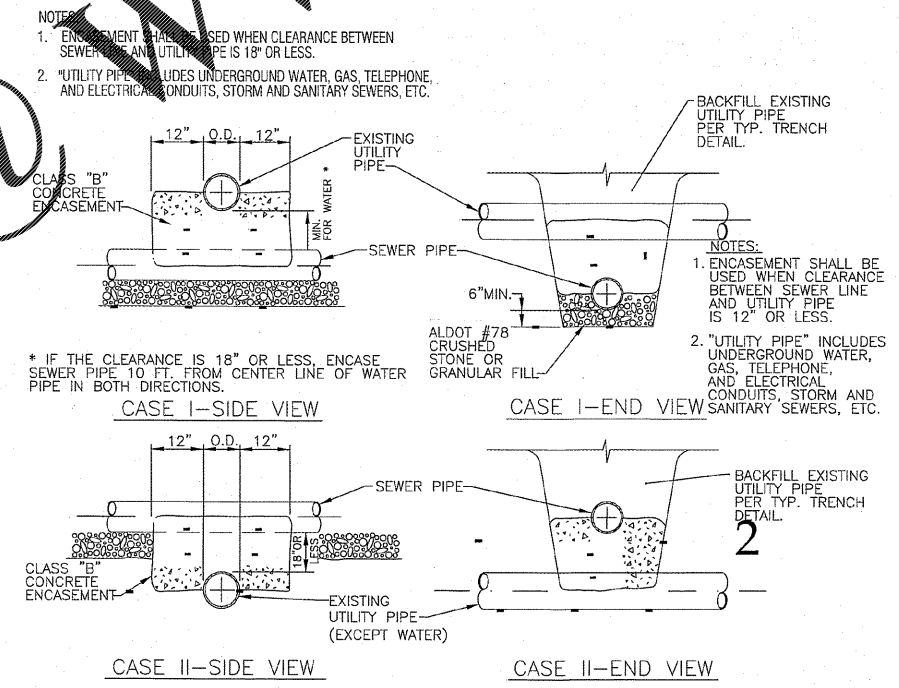
PLAN VIEW



SECTION 'A'-'A'
CURB INLET DETAIL
NOT TO SCALE

8

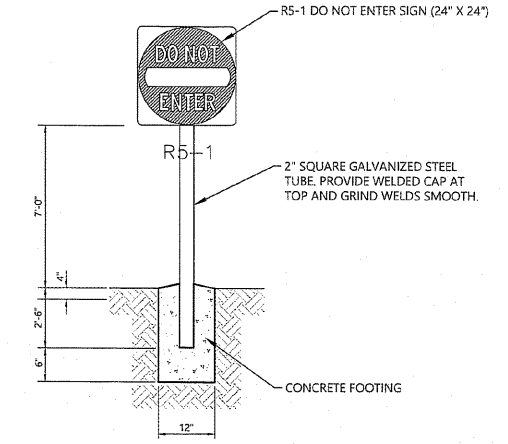
- NOTES:**
1. INLET BOXES GREATER THAN 7'-0" x 13'-6" x 10'-0" SHALL BE A SPECIALLY DESIGNED INLET BOX.
 2. ALL CONCRETE SHALL BE CLASS "A" AND SHALL DEVELOP A MINIMUM COMPRESSIVE STRENGTH OF 3000 PSI IN 28 DAYS.
 3. REINFORCING SHALL BE INTERMEDIATE GRADE DEFORMED BARS AND SHALL CONFORM TO THE REQUIREMENTS OF THE STANDARD SPECIFICATIONS FOR BILLET STEEL CONCRETE REINFORCEMENT BARS, ASTM A-15 AND DEFORMATIONS CONFORMING TO ASTM A-305.
 4. STEPS ARE REQUIRED ON ALL INLET BOXES WHEN DIMENSION FROM BOTTOM SLAB FLOW LINE TO TOP OF TOP SLAB IS GREATER THAN 4'-0".
 5. MINIMUM CLEARANCE FROM OUTSIDE OF PIPE TO INSIDE OF BOX WALL SHALL NOT BE LESS THAN 6".
 6. MINIMUM CONCRETE COVER OVER REINFORCING STEEL SHALL BE 2" ON ALL STRUCTURES.



- NOTES:**
1. RELOCATION OF A UTILITY WILL BE THE RESPONSIBILITY OF THE CONTRACTOR. THE CONTRACTOR SHALL COORDINATE WITH ALL EFFECTED UTILITIES.
 2. SANITARY SEWER SHALL ALWAYS BE LOCATED BENEATH WATER LINES.

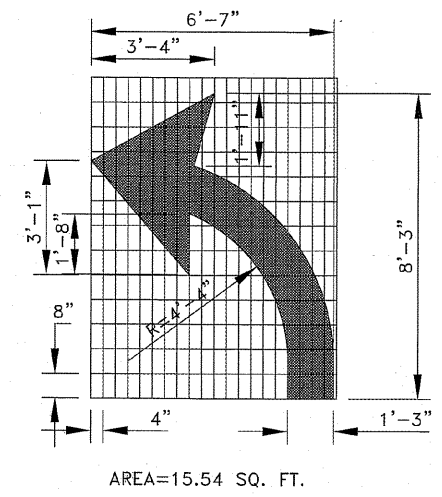
5

UTILITY CROSSING DETAILS
NOT TO SCALE



DO NOT ENTER SIGN
NO SCALE

2



TURN ARROW MARKING DETAIL
ALL LEGENDS AND MARKINGS SHALL CONFORM TO THE LATEST M.U.T.C.D. AND ALL LEGENDS AND MARKINGS SHALL BE WHITE IN COLOR.

3



360D QUALITY CIRCLE NW,
SUITE 450
HUNTSVILLE, AL 35806
(256) 837-8882

NEW GENERATION FOODS, LLC
P.O. BOX 736
ATHENS, AL 35612
256.729.9136

NO.	DATE	DESCRIPTION	CHK.	APP.
2	4-27-2020	CITY'S FINAL TECHNICAL REVIEW	BW	BW
1	4-7-2020	CITY'S TECHNICAL REVIEW	HW	HW

FINAL FOR DEVELOPMENT
MAY 14 2020

SITE DETAILS

CONSTRUCTION DOCUMENTS
BOJANGLES - J.E. BRISCOE WAY & MADISON BLVD.
MADISON, MADISON COUNTY, ALABAMA

PROJECT NUMBER
518220002
DRAWING NUMBER

C6.1

DRAWING PATH: C:\Projects\2020\182-20-002_NGF_Bojangles-Madison Blvd\CAD\Construction\18220002_DET.dwg