

MADISON BOULEVARD
175' R.O.W.

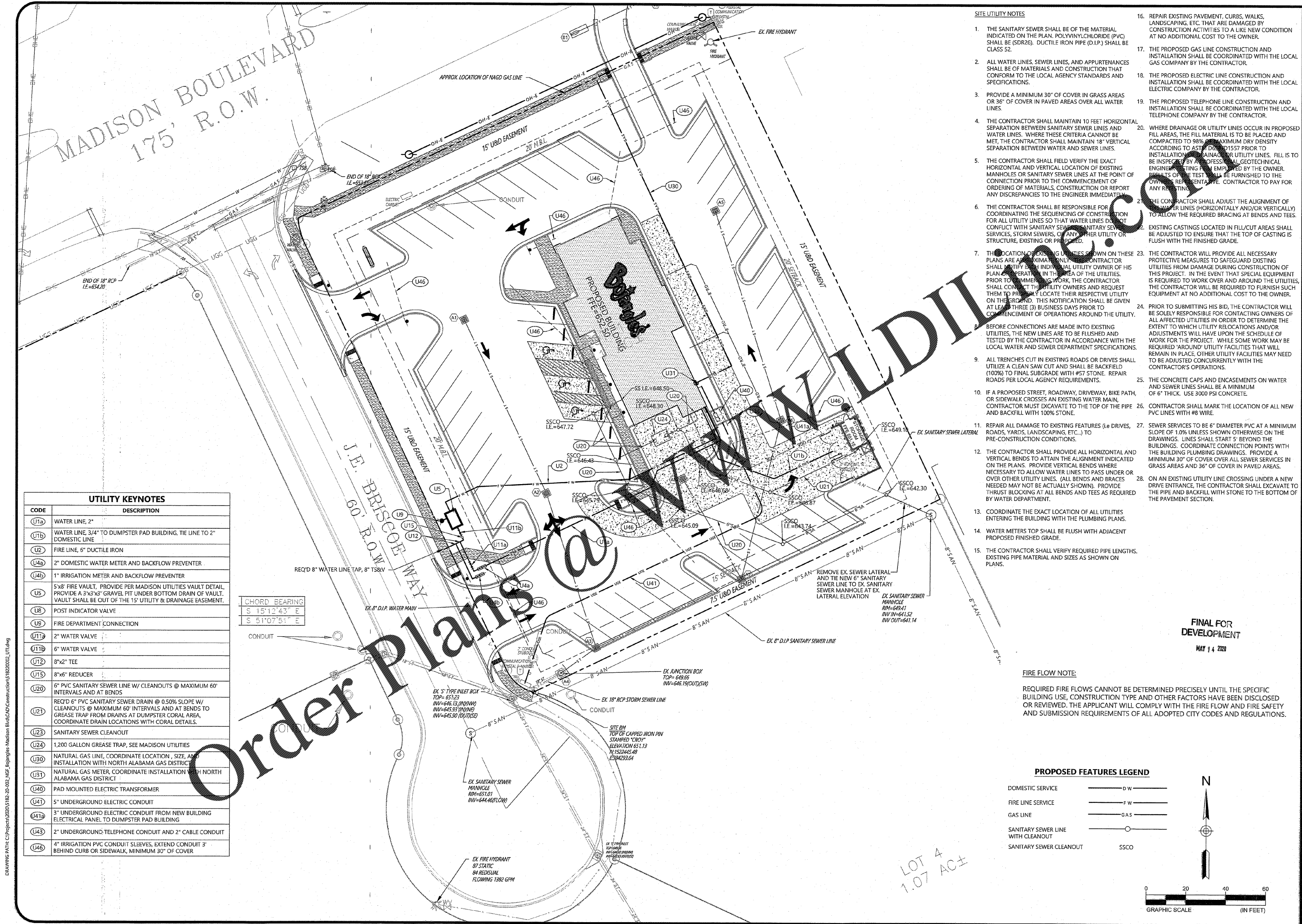
J.E. BRISCOE WAY
60' R.O.W.

UTILITY KEYNOTES

CODE	DESCRIPTION
U1a	WATER LINE, 2"
U1b	WATER LINE, 3/4" TO DUMPSTER PAD BUILDING, TIE LINE TO 2" DOMESTIC LINE
U2	FIRE LINE, 6" DUCTILE IRON
U4a	2" DOMESTIC WATER METER AND BACKFLOW PREVENTER
U4b	1" IRRIGATION METER AND BACKFLOW PREVENTER
U5	5'x8' FIRE VAULT, PROVIDE PER MADISON UTILITIES VAULT DETAIL, PROVIDE A 3'x3'x3' GRAVEL PIT UNDER BOTTOM DRAIN OF VAULT. VAULT SHALL BE OUT OF THE 15' UTILITY & DRAINAGE EASEMENT.
U6	POST INDICATOR VALVE
U9	FIRE DEPARTMENT CONNECTION
U11	2" WATER VALVE
U11a	6" WATER VALVE
U12	8"x2" TEE
U15	8"x6" REDUCER
U20	6" PVC SANITARY SEWER LINE W/ CLEANOUTS @ MAXIMUM 60' INTERVALS AND AT BENDS
U21	REQ'D 6" PVC SANITARY SEWER DRAIN @ 0.50% SLOPE W/ CLEANOUTS @ MAXIMUM 60' INTERVALS AND AT BENDS TO GREASE TRAP FROM DRAINS AT DUMPSTER CORAL AREA, COORDINATE DRAIN LOCATIONS WITH CORAL DETAILS.
U23	SANITARY SEWER CLEANOUT
U24	1,200 GALLON GREASE TRAP, SEE MADISON UTILITIES
U30	NATURAL GAS LINE, COORDINATE LOCATION, SIZE, AND INSTALLATION WITH NORTH ALABAMA GAS DISTRICT
U31	NATURAL GAS METER, COORDINATE INSTALLATION WITH NORTH ALABAMA GAS DISTRICT
U40	PAD MOUNTED ELECTRIC TRANSFORMER
U41	5" UNDERGROUND ELECTRIC CONDUIT
U41a	3" UNDERGROUND ELECTRIC CONDUIT FROM NEW BUILDING ELECTRICAL PANEL TO DUMPSTER PAD BUILDING
U43	2" UNDERGROUND TELEPHONE CONDUIT AND 2" CABLE CONDUIT
U46	4" IRRIGATION PVC CONDUIT SLEEVES, EXTEND CONDUIT 3' BEHIND CURB OR SIDEWALK, MINIMUM 30" OF COVER

CHORD BEARING

S 15°12'43" E
S 51°07'51" E



SITE UTILITY NOTES

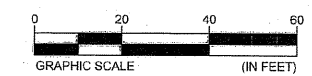
- THE SANITARY SEWER SHALL BE OF THE MATERIAL INDICATED ON THE PLAN. POLYVINYLCHLORIDE (PVC) SHALL BE (SDR26). DUCTILE IRON PIPE (D.I.P.) SHALL BE CLASS 52.
- ALL WATER LINES, SEWER LINES, AND APPURTENANCES SHALL BE OF MATERIALS AND CONSTRUCTION THAT CONFORM TO THE LOCAL AGENCY STANDARDS AND SPECIFICATIONS.
- PROVIDE A MINIMUM 30" OF COVER IN GRASS AREAS OR 36" OF COVER IN PAVED AREAS OVER ALL WATER LINES.
- THE CONTRACTOR SHALL MAINTAIN 10 FEET HORIZONTAL SEPARATION BETWEEN SANITARY SEWER LINES AND WATER LINES. WHERE THESE CRITERIA CANNOT BE MET, THE CONTRACTOR SHALL MAINTAIN 18" VERTICAL SEPARATION BETWEEN WATER AND SEWER LINES.
- THE CONTRACTOR SHALL FIELD VERIFY THE EXACT HORIZONTAL AND VERTICAL LOCATION OF EXISTING MANHOLES OR SANITARY SEWER LINES AT THE POINT OF CONNECTION PRIOR TO THE COMMENCEMENT OF ORDERING OF MATERIALS, CONSTRUCTION OR REPORT ANY DISCREPANCIES TO THE ENGINEER IMMEDIATELY.
- THE CONTRACTOR SHALL BE RESPONSIBLE FOR COORDINATING THE SEQUENCING OF CONSTRUCTION FOR ALL UTILITY LINES SO THAT WATER LINES DO NOT CONFLICT WITH SANITARY SEWER, SANITARY SEWER SERVICES, STORM SEWERS, OR ANY OTHER UTILITY OR STRUCTURE, EXISTING OR PROPOSED.
- THE LOCATION OF EXISTING UTILITIES SHOWN ON THESE PLANS ARE APPROXIMATE ONLY. THE CONTRACTOR SHALL NOTIFY EACH INDIVIDUAL UTILITY OWNER OF HIS PLAN OPERATIONS IN THE AREA OF THE UTILITIES. PRIOR TO COMMENCING WORK, THE CONTRACTOR SHALL CONTACT THE UTILITY OWNERS AND REQUEST THEM TO PRELIMINARILY LOCATE THEIR RESPECTIVE UTILITY ON THE GROUND. THIS NOTIFICATION SHALL BE GIVEN AT LEAST THREE (3) BUSINESS DAYS PRIOR TO COMMENCEMENT OF OPERATIONS AROUND THE UTILITY.
- BEFORE CONNECTIONS ARE MADE INTO EXISTING UTILITIES, THE NEW LINES ARE TO BE FLUSHED AND TESTED BY THE CONTRACTOR IN ACCORDANCE WITH THE LOCAL WATER AND SEWER DEPARTMENT SPECIFICATIONS.
- ALL TRENCHES CUT IN EXISTING ROADS OR DRIVES SHALL UTILIZE A CLEAN SAW CUT AND SHALL BE BACKFILL (100%) TO FINAL SUBGRADE WITH #57 STONE. REPAIR ROADS PER LOCAL AGENCY REQUIREMENTS.
- IF A PROPOSED STREET, ROADWAY, DRIVEWAY, BIKE PATH, OR SIDEWALK CROSSES AN EXISTING WATER MAIN, CONTRACTOR MUST EXCAVATE TO THE TOP OF THE PIPE AND BACKFILL WITH 100% STONE.
- REPAIR ALL DAMAGE TO EXISTING FEATURES (i.e. DRIVES, ROADS, YARDS, LANDSCAPING, ETC.) TO PRE-CONSTRUCTION CONDITIONS.
- THE CONTRACTOR SHALL PROVIDE ALL HORIZONTAL AND VERTICAL BENDS TO ATTAIN THE ALIGNMENT INDICATED ON THE PLANS. PROVIDE VERTICAL BENDS WHERE NECESSARY TO ALLOW WATER LINES TO PASS UNDER OR OVER OTHER UTILITY LINES. (ALL BENDS AND BRACES NEEDED MAY NOT BE ACTUALLY SHOWN). PROVIDE THRUST BLOCKING AT ALL BENDS AND TEES AS REQUIRED BY WATER DEPARTMENT.
- COORDINATE THE EXACT LOCATION OF ALL UTILITIES ENTERING THE BUILDING WITH THE PLUMBING PLANS.
- WATER METERS TOP SHALL BE FLUSH WITH ADJACENT PROPOSED FINISHED GRADE.
- THE CONTRACTOR SHALL VERIFY REQUIRED PIPE LENGTHS, EXISTING PIPE MATERIAL AND SIZES AS SHOWN ON PLANS.
- REPAIR EXISTING PAVEMENT, CURBS, WALKS, LANDSCAPING, ETC. THAT ARE DAMAGED BY CONSTRUCTION ACTIVITIES TO A LIKE NEW CONDITION AT NO ADDITIONAL COST TO THE OWNER.
- THE PROPOSED GAS LINE CONSTRUCTION AND INSTALLATION SHALL BE COORDINATED WITH THE LOCAL GAS COMPANY BY THE CONTRACTOR.
- THE PROPOSED ELECTRIC LINE CONSTRUCTION AND INSTALLATION SHALL BE COORDINATED WITH THE LOCAL ELECTRIC COMPANY BY THE CONTRACTOR.
- THE PROPOSED TELEPHONE LINE CONSTRUCTION AND INSTALLATION SHALL BE COORDINATED WITH THE LOCAL TELEPHONE COMPANY BY THE CONTRACTOR.
- WHERE DRAINAGE OR UTILITY LINES OCCUR IN PROPOSED FILL AREAS, THE FILL MATERIAL IS TO BE PLACED AND COMPACTED TO 98% MAXIMUM DRY DENSITY ACCORDING TO ASTM D1557 PRIOR TO INSTALLATION OF DRAINAGE OR UTILITY LINES. FILL IS TO BE INSPECTED BY A PROFESSIONAL GEOTECHNICAL ENGINEER HAVING BEEN EMPLOYED BY THE OWNER. RESULTS OF THE TEST SHALL BE FURNISHED TO THE OWNER REPRESENTATIVE. CONTRACTOR TO PAY FOR ANY RE-TESTING.
- THE CONTRACTOR SHALL ADJUST THE ALIGNMENT OF WATER LINES (HORIZONTALLY AND/OR VERTICALLY) TO ALLOW THE REQUIRED BRACING AT BENDS AND TEES.
- EXISTING CASTINGS LOCATED IN FILL/CUT AREAS SHALL BE ADJUSTED TO ENSURE THAT THE TOP OF CASTING IS FLUSH WITH THE FINISHED GRADE.
- THE CONTRACTOR WILL PROVIDE ALL NECESSARY PROTECTIVE MEASURES TO SAFEGUARD EXISTING UTILITIES FROM DAMAGE DURING CONSTRUCTION OF THIS PROJECT. IN THE EVENT THAT SPECIAL EQUIPMENT IS REQUIRED TO WORK OVER AND AROUND THE UTILITIES, THE CONTRACTOR WILL BE REQUIRED TO FURNISH SUCH EQUIPMENT AT NO ADDITIONAL COST TO THE OWNER.
- PRIOR TO SUBMITTING HIS BID, THE CONTRACTOR WILL BE SOLELY RESPONSIBLE FOR CONTACTING OWNERS OF ALL AFFECTED UTILITIES IN ORDER TO DETERMINE THE EXTENT TO WHICH UTILITY RELOCATIONS AND/OR ADJUSTMENTS WILL HAVE UPON THE SCHEDULE OF WORK FOR THE PROJECT. WHILE SOME WORK MAY BE REQUIRED 'AROUND' UTILITY FACILITIES THAT WILL REMAIN IN PLACE, OTHER UTILITY FACILITIES MAY NEED TO BE ADJUSTED CONCURRENTLY WITH THE CONTRACTOR'S OPERATIONS.
- THE CONCRETE CAPS AND ENCASUREMENTS ON WATER AND SEWER LINES SHALL BE A MINIMUM OF 6" THICK. USE 3000 PSI CONCRETE.
- CONTRACTOR SHALL MARK THE LOCATION OF ALL NEW PVC LINES WITH #8 WIRE.
- SEWER SERVICES TO BE 6" DIAMETER PVC AT A MINIMUM SLOPE OF 1.0% UNLESS SHOWN OTHERWISE ON THE DRAWINGS. LINES SHALL START 5' BEYOND THE BUILDINGS. COORDINATE CONNECTION POINTS WITH THE BUILDING PLUMBING DRAWINGS. PROVIDE A MINIMUM 30" OF COVER OVER ALL SEWER SERVICES IN GRASS AREAS AND 36" OF COVER IN PAVED AREAS.
- ON AN EXISTING UTILITY LINE CROSSING UNDER A NEW DRIVE ENTRANCE, THE CONTRACTOR SHALL EXCAVATE TO THE PIPE AND BACKFILL WITH STONE TO THE BOTTOM OF THE PAVEMENT SECTION.

FIRE FLOW NOTE:

REQUIRED FIRE FLOWS CANNOT BE DETERMINED PRECISELY UNTIL THE SPECIFIC BUILDING USE, CONSTRUCTION TYPE AND OTHER FACTORS HAVE BEEN DISCLOSED OR REVIEWED. THE APPLICANT WILL COMPLY WITH THE FIRE FLOW AND FIRE SAFETY AND SUBMISSION REQUIREMENTS OF ALL ADOPTED CITY CODES AND REGULATIONS.

PROPOSED FEATURES LEGEND

- DOMESTIC SERVICE ——— D W ———
- FIRE LINE SERVICE ——— F W ———
- GAS LINE ——— GAS ———
- SANITARY SEWER LINE WITH CLEANOUT ——— S S C O ———
- SANITARY SEWER CLEANOUT S S C O



FINAL FOR DEVELOPMENT
MAY 14 2020



3600 QUALITY CIRCLE NW,
SUITE 450
HUNTSVILLE, AL 35896
(256) 837-8882

**NEW GENERATION
FOODS, LLC**
P.O. BOX 736
ATHENS, AL 35612
256.729.9136

NO.	DATE	DESCRIPTION	CHK	APP
1	4-7-2020	CITY'S TECHNICAL REVIEW	HW	HW
2	4-27-2020	CITY'S FINAL TECHNICAL REVIEW	BW	BW

UTILITY PLAN

CONSTRUCTION DOCUMENTS
BOJANGLES - J.E. BRISCOE WAY & MADISON BLVD.
MADISON, MADISON COUNTY, ALABAMA

PROJECT NUMBER
518220002
DRAWING NUMBER

C5.0

DRAWING PATH: C:\Projects\2020\5182_20_002_NGF_Bojangles-Madison Blvd\CAD\Construction\518220002_U1.dwg

LOT 4
1.07 AC±