



360D QUALITY CIRCLE NW,
SUITE 450
HUNTSVILLE, AL 35895
(256) 837-8982

**NEW GENERATION
FOODS, LLC**
P.O. BOX 736
ATHENS, AL 35612
256.729.9136

GENERAL NOTES

1. BASE INFORMATION WAS TAKEN FROM A INFORMATION PROVIDED BY THE OWNER FROM THE SELLER. S&ME, INC AND ANY OF THEIR CONSULTANTS SHALL NOT BE HELD RESPONSIBLE FOR THE ACCURACY AND/OR COMPLETENESS OF THAT INFORMATION SHOWN HEREON OR ANY ERRORS OR OMISSIONS RESULTING FROM SUCH.
2. THE CONTRACTOR SHALL CHECK ALL EXISTING CONDITIONS, (i.e. INVERTS, UTILITY ROUTINGS, UTILITY CROSSINGS, AND DIMENSIONS) IN THE FIELD PRIOR TO COMMENCEMENT OF WORK. REPORT ANY DISCREPANCIES TO THE ENGINEER.
3. THE CONTRACTOR SHALL VERIFY THE EXACT LOCATION OF ALL EXISTING UTILITIES. TAKE CARE TO PROTECT UTILITIES THAT ARE TO REMAIN. REPAIR ANY DAMAGE ACCORDING TO LOCAL STANDARDS AND AT THE CONTRACTOR'S EXPENSE. COORDINATE ALL CONSTRUCTION WITH THE APPROPRIATE UTILITY COMPANY. THE CONTRACTOR SHALL CALL NATIONAL ONE CALL (811) 24 HOURS PRIOR TO PROCEEDING WITH ANY EXCAVATION.

DEMOLITION KEYNOTES

CODE	DESCRIPTION
(D)	REMOVE EXISTING CONCRETE CURB
(D2)	EVENLY SAWCUT

OWNERS: PROPERTIES # 2 SPV LLC
C/O IMPROVEMENT MGT. LLC
SOUTH 3RD STREET STE. 3720
MINNEAPOLIS MN 55402
NO. 20160909000515660
LOT 1
MCCURRY SUBDIVISION
PLAT BOOK 30, PAGE 14

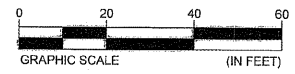
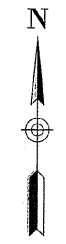
CURVE DATA

CURVE NO.	RADIUS	DELTA	TAN.	ARC	CHORD DIS.	CHORD BEAR.
1	38.00'	20°31'13"	6.88'	13.61'	13.54'	S 15°11'00" E
2	20.00'	51°19'05"	9.61'	17.91'	17.32'	S 51°07'00" E

PROPOSED FEATURES LEGEND

CONCRETE TO REMOVE

FINAL FOR
DEVELOPMENT
MAY 14 2020



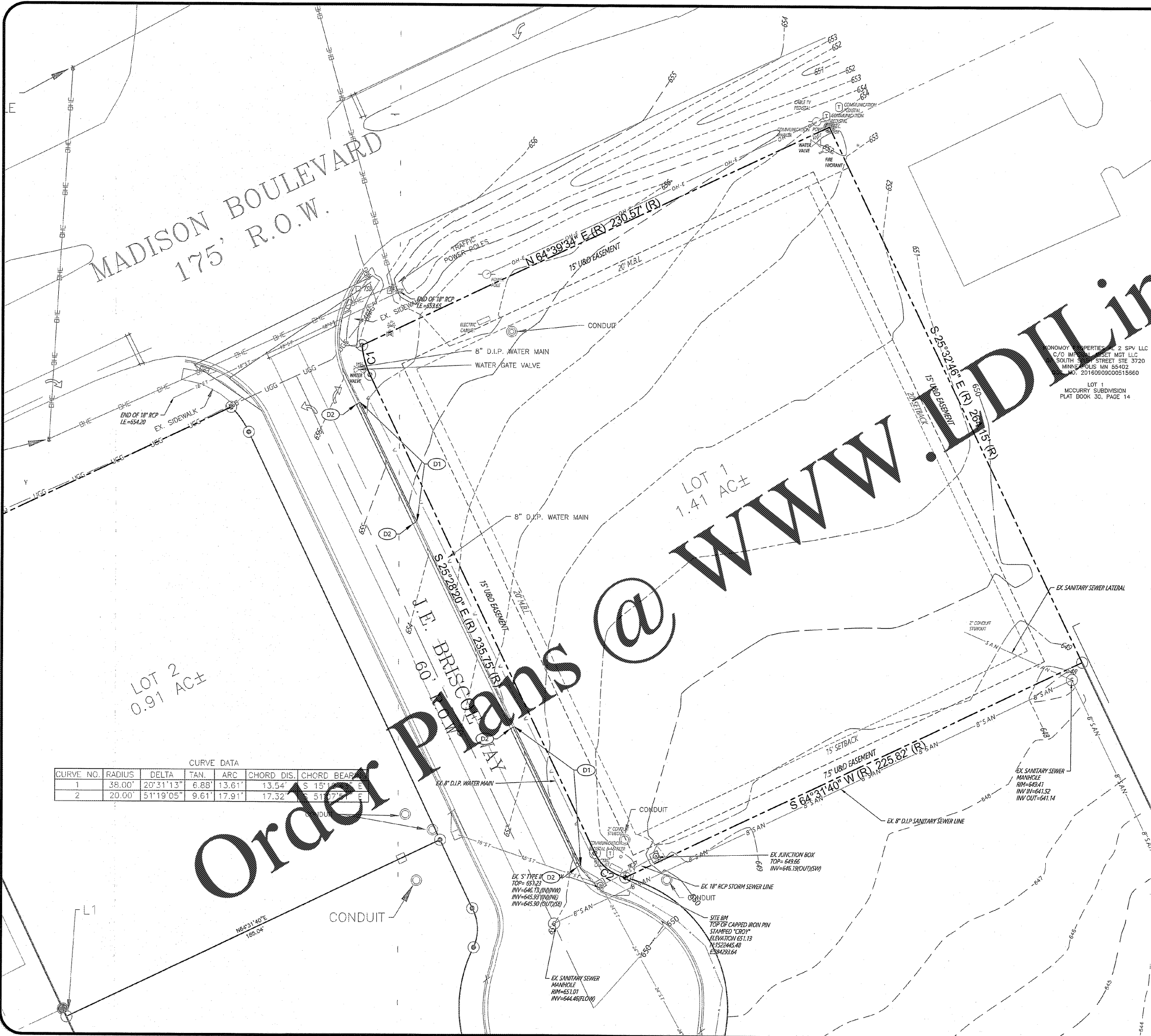
EXISTING CONDITIONS & DEMOLITION PLAN

CONSTRUCTION DOCUMENTS
BOJANGLES - J.E. BRISCOE WAY & MADISON BLVD.
MADISON, MADISON COUNTY, ALABAMA

PROJECT NUMBER
518220002
DRAWING NUMBER

C1.0

DRAWING PATH: C:\p\proj\518220002\518220002_002_NG_Bojangles-Madison Blvd\CD\Construction\518220002_EX.dwg



Order Plans @

WWW.DLine.com