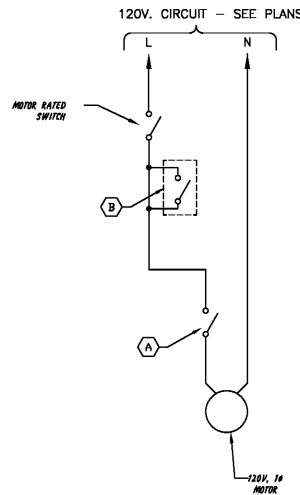


**EQUIPMENT FEEDER SCHEDULE**

EQUIPMENT MARK	VOLTAGE-PHASE	PANEL - CIRCUIT(S)	MOCP	FEEDER		PROVIDER	DISCONNECT				REMARKS
				CONDUCTOR & GROUND	PIPE		AMPERAGE	POLES	FUSES	NEMA	
AHU-1	120V-1P	SEE PLAN	15A	(2)#12 & (1)#12G	1/2"	CONTRACTOR	30A	1	-	1	-
HP-1	208V-3P	SEE PLAN	30A	(3)#10 & (1)#10G	1/2"	CONTRACTOR	30A	3	-	3R	-
EF-1	120V-1P	SEE PLAN	15A	(2)#12 & (1)#12G	1/2"	INTEGRAL	-	-	-	-	-
EF-2	120V-1P	SEE PLAN	15A	(2)#12 & (1)#12G	1/2"	INTEGRAL	-	-	-	-	-
EF-3	120V-1P	SEE PLAN	25A	(2)#10 & (1)#10G	1/2"	INTEGRAL	-	-	-	-	-
EF-4	120V-1P	SEE PLAN	15A	(2)#12 & (1)#12G	1/2"	INTEGRAL	-	-	-	-	-
SF-1	120V-1P	SEE PLAN	20A	(2)#12 & (1)#12G	1/2"	INTEGRAL	-	-	-	-	-
SF-2	120V-1P	SEE PLAN	20A	(2)#12 & (1)#12G	1/2"	INTEGRAL	-	-	-	-	-
SF-3	120V-1P	SEE PLAN	20A	(2)#12 & (1)#12G	1/2"	INTEGRAL	-	-	-	-	-
SF-4	120V-1P	SEE PLAN	20A	(2)#12 & (1)#12G	1/2"	INTEGRAL	-	-	-	-	-
UH-1	120V-1P	SEE PLAN	15A	(2)#12 & (1)#12G	1/2"	CONTRACTOR	30A	1	-	1	-
UH-2	120V-1P	SEE PLAN	15A	(2)#12 & (1)#12G	1/2"	CONTRACTOR	30A	1	-	1	-

**EQUIPMENT FEEDER GENERAL NOTES**

- DISCONNECT SWITCHES FOR 120V OR 277V EQUIPMENT UNDER 30 AMPS SHALL BE MOTOR RATED TOGGLE SWITCHES.
- CONTRACTOR IS RESPONSIBLE FOR ALL FINAL CONNECTIONS TO EQUIPMENT.
- COORDINATE EXACT ROUGH-IN LOCATIONS PRIOR TO START OF CONSTRUCTION.
- ALL MULTI-VOLT DISCONNECT SWITCHES PROVIDED BY THIS CONTRACTOR SHALL COME WITH A NEUTRAL AND GROUND LUG KIT.



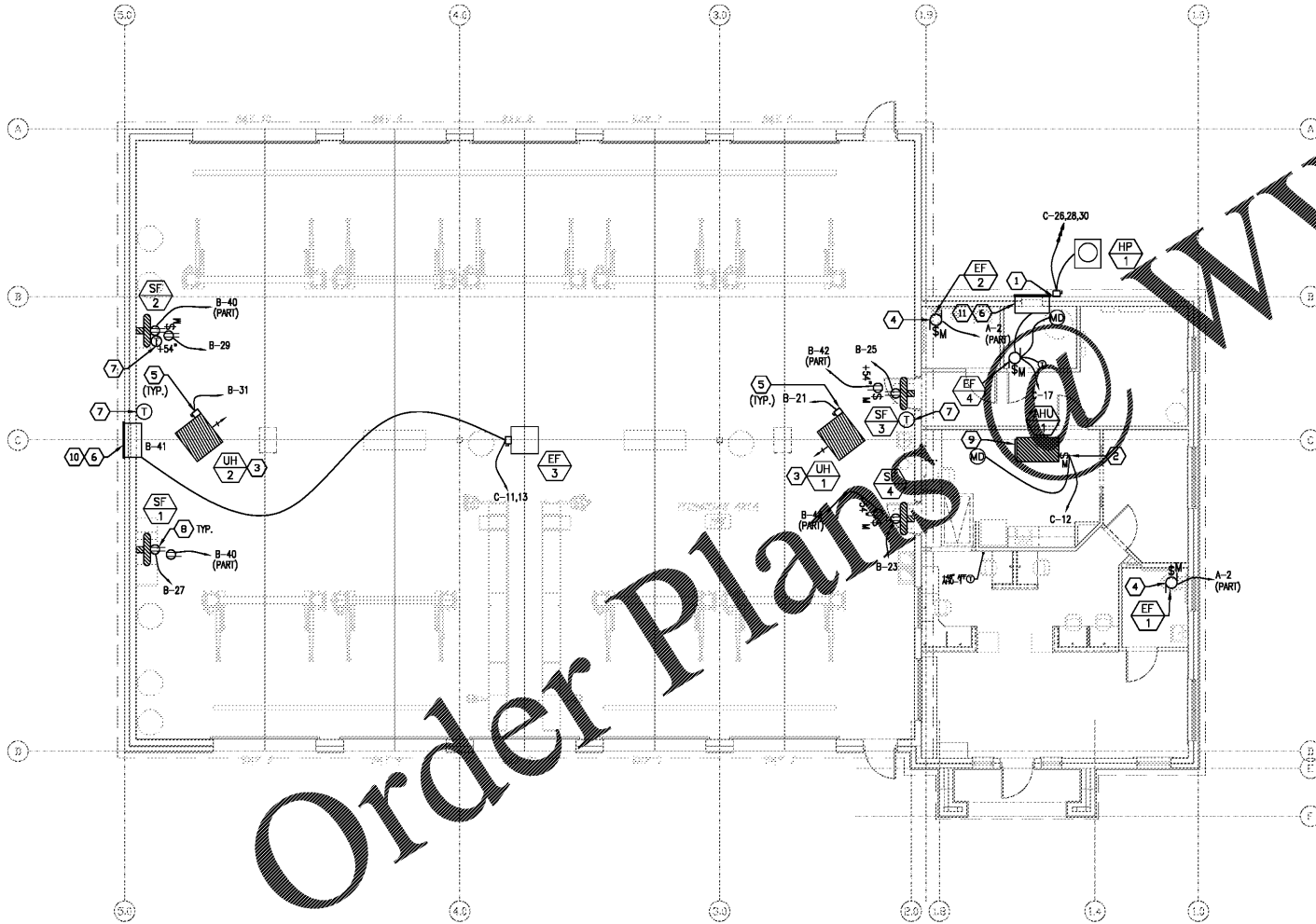
2 EXHAUST FAN #3 WIRING DETAIL  
NOT TO SCALE

**ELECTRICAL KEYED NOTES:**

- PROVIDE A 30A, 3P, NF, NEMA 3R DISCONNECT SWITCH ON EXTERIOR WALL FOR UNIT SHUTOFF. DISCONNECT AND DUPLEX LOCATED 4'6" OFF BACK WALL. FINAL CONNECTIONS SHALL BE MADE VIA SEALTITE FLEXIBLE CONDUIT.
- PROVIDE A 20A, 1P MOTOR RATED TOGGLE SWITCH FOR AHU-1 DISCONNECT. FINAL CONNECTIONS SHALL BE MADE VIA FMC.
- ELECTRICAL CONTRACTOR AND MECHANICAL CONTRACTOR SHALL COORDINATE LOCATIONS OF UNIT HEATERS AND HIGH BAY "M" FIXTURES.
- EXHAUST FAN TO BE CENTERED OVER TOILET. COORDINATE WITH MECHANICAL CONTRACTOR PRIOR TO ROUGH-IN.
- TYPICAL OF (2): PROVIDE A 30A, 1P MOTOR RATED TOGGLE SWITCH FOR UNIT HEATER DISCONNECT. FINAL CONNECTIONS SHALL BE MADE VIA SEALTITE FLEXIBLE CONDUIT.
- PROVIDE A FLEXIBLE CONNECTION AT +156" A.F.F. TO ELECTRIC ACTUATOR IN MECHANICAL INTAKE LOUVER. COORDINATE WORK WITH MECHANICAL CONTRACTOR. SEE WIRING DIAGRAM 2/E-3.02.
- COORDINATE EXACT LOCATION OF THERMOSTAT WITH MECHANICAL PLANS AND MECHANICAL CONTRACTOR PRIOR TO ROUGH-IN.
- TYPICAL OF (4) PROVIDE A NEMA 5-20 DUPLEX RECEPTACLE AT +96" A.F.F. FOR OSCILLATION FAN POWER CONNECTION. PROVIDE SPARE SWITCHES AT +54" AFF (NOT SHOWN) TO CONTROL THESE RECEPTACLES. MOUNT RECEPTACLE AND SWITCH VERTICALLY ALIGNED WITH FAN.
- EC SHALL PROVIDE, INSTALL AND WIRE A SMOKE DETECTOR IN THE RETURN DUCT OF UNIT. CONNECT TO UNIT CONTROL CIRCUIT SO THAT IN THE EVENT OF A SMOKE DETECTION THE FAN WILL SHUT DOWN.
- WIRE EXHAUST FAN EF-3 PER PROGRAM 2/E-3.02.
- WIRE EXHAUST FAN EF-4 PER PROGRAM 2/E-3.02.

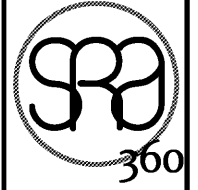
**ELECTRICAL GENERAL NOTES:**

- REFER TO SHEET E-1.01 FOR GENERAL NOTES AND SYMBOLS THAT SHALL APPLY TO ALL SHEETS IN THIS SET UNLESS NOTED OTHERWISE IN THE KEYED NOTES.
- ALL 120V 20A CONVENIENCE AND TELEPHONE RECEPTACLES IN REPAIR AREA AND PERIMETER WALLS SHALL BE MOUNTED AT +54" A.F.F. UNLESS NOTED OTHERWISE.
- ALL 120V 20A CONVENIENCE RECEPTACLES SHALL EITHER HAVE INTERNAL GFCI PROTECTION, OR SHALL BE SERVED BY GFCI RATED BREAKERS PER NEC ARTICLE 511.12.
- ALL MULTIWIRE CIRCUITS SHALL HAVE A MINIMUM NEUTRAL SIZE OF #10AWG.
- ALL RECEPTACLES IN RECEPTION, OFFICE, SERVICE AREA, AND RESTROOMS SHALL BE MOUNTED AT +18" A.F.F. UNLESS OTHERWISE NOTED.
- ALL WIRE SIZES SHALL BE #12 BHN/THWN, UNLESS NOTED OTHERWISE.
- ALL CONDUITS SHALL BE #1" EMT, UNLESS NOTED OTHERWISE.
- VERIFY ALL EQUIPMENT OVERCURRENT PROTECTION WITH MANUFACTURER.
- CONDUCTORS HAVE BEEN SIZED FOR A MAXIMUM VOLTAGE DROP OF 2% IN FEEDERS, AND 3% IN BRANCH CIRCUITS.
- ALL OUTLETS, UNLESS OTHERWISE SPECIFIED, TO BE MINIMUM OF 20 AMPS.
- UTILIZE SPARES AS NECESSARY FOR ADDITIONAL ELECTRICAL REQUIREMENTS.
- NO WATER PIPING SHALL BE RUN DIRECTLY ABOVE ELECTRICAL PANELS.
- ALL 20A 120V CONVENIENCE RECEPTACLES LOCATED OUTDOORS, IN GARAGE, OR WITHIN 6'-0" OF WATER SUPPLYING PLUMBING FIXTURES SHALL HAVE GFCI PROTECTION.
- ALL EXTERIOR HOMERUNS SHALL HAVE A MINIMUM CONDUCTOR SIZE OF #10AWG.
- ALL ADJACENT POWER, DATA, AND TELEPHONE RECEPTACLES SHALL BE GANGED TOGETHER, AS PRACTICAL.
- THESE DRAWINGS ARE INTENDED TO BE COMPLETE AT THE TIME OF ISSUE, BUT WILL NOT REFLECT ANY NEW EQUIPMENT OR LIGHTS THAT MAY BE MOVED, ADDED, OR SUBSTITUTED AFTER THE ISSUE DATE. PROVIDE ALL NECESSARY BREAKERS, WIRING, CONDUITS, RECEPTACLES, JUNCTION BOXES, SWITCHES, ETC. FOR EQUIPMENT AND LIGHTS NOT SHOWN ON PLANS OR FOR EQUIPMENT AND LIGHTS THAT HAVE BEEN MOVED, SUBSTITUTED, OR ALTERED. VERIFY ALL ELECTRICAL REQUIREMENTS OF NEW OR ALTERNATE EQUIPMENT AND LIGHTS WITH MANUFACTURER. CONTACT ELECTRICAL ENGINEER IF ANY DISCREPANCIES ARISE.
- ELECTRICAL RECEPTACLES ARE TO BE WHITE IN THE OFFICE AREA WITH WHITE COVERPLATES AND BLACK IN THE SHOP AREA WITH STAINLESS STEEL COVERPLATES.



1 MECHANICAL POWER PLAN  
SCALE: 1/8"=1'-0"

NOTE:  
THIS FACILITY IS CONSIDERED A MINOR REPAIR GARAGE AND FLOOR WORK AREAS SHALL BE CLASSIFIED CLASS 1, DIVISION 2, ZONE 2 PER NEC 511.3(C).



STEWART + REINDERMAN ARCHITECTURE, PLLC  
5450 E. High Street, Suite 200  
Phoenix, Arizona 85054  
P: 480.515.5123  
www.sra360.com

Christian Brothers Automotive  
Wickham Road  
Melbourne, Florida

Christian Brothers Automotive  
1726 Katy Freeway, St. 200  
Houston, TX 77054

Professional Engineer  
P.E. 76324  
STATE OF FLORIDA  
4/13/20  
Date

**Revisions**

1/23/20 - Prototype Update
4/1/20 - City Comments
4/9/20 - T2 Client Rev.

Project No. 19-097  
Drawn By:  
Date: 03/06/20  
Sheet Title:  
MECHANICAL POWER PLANS  
Drawing No.

**Dialectic**

Dialectic Inc.  
310 W 20th Street, Suite 200  
Kansas City, MO 64108  
Florida Certificate of Authorization Number 8039  
T 816-997-9601  
F 816-997-9602  
DialecticEng.com  
Copyright 2020

E-3.02  
10RHS-11-2019