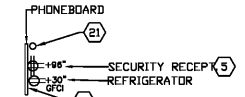
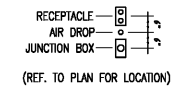


ELECTRICAL KEYED NOTES:

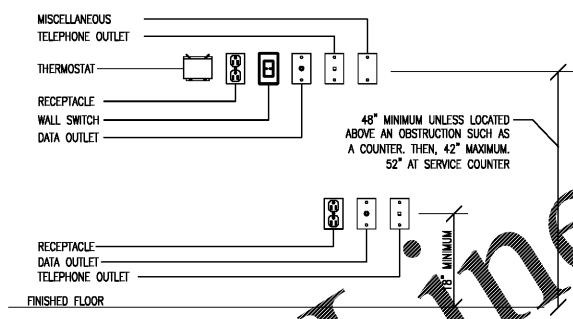
- 1 PROVIDE A 110V, 20A CIRCUIT IN ATTIC ABOVE PASSENGER SIDE COLUMN FOR REVERSE CHANNEL LIGHTING. RUN CONDUIT ABOVE LEVEL OF LETTERS, JUST BELOW TRUSS JOISTS. (SIGN WILL RUN PIGTAIL TO BOX).
- 2 NOT USED.
- 3 NOT USED.
- 4 RECEPTACLES SHALL BE HORIZONTALLY MOUNTED.
- 5 PROVIDE A DEDICATED NEMA 5-20 DUPLEX RECEPTACLE AT 5'-0" A.F.F. WHERE SHOWN FOR SECURITY SYSTEM. COORDINATE WORK WITH OTHER TRADES INVOLVED.
- 6 NOT USED.
- 7 NOT USED.
- 8 TELEPHONE RECEPTACLE SHALL BE MOUNTED AT +54" A.F.F. TO A BOX ABOVE FINISHED COUNTER. LOCATE 6" AT A FROM EDGE OF WALL, SEE DIMENSIONS ON DRAWINGS.
- 9 HOLES WITH PLASTIC GROMMET IN COUNTERTOP FOR EQUIPMENT POWER/DATA CORD COUNTERTOP PENETRATIONS.
- 10 PROVIDE A 30A, 2P, NF DISCONNECT SWITCH ABOVE CEILING FOR LOCAL SHUTOFF OF WATER HEATER #1. FINAL CONNECTIONS SHALL BE MADE VIA SEALTITE FLEXIBLE CONDUIT.
- 11 TYPICAL OF BAYS 1,2,4,5,6,7,8,9,10: PROVIDE A JUNCTION BOX PER DIMENSIONS. PROVIDE A STRAIN RELIEF GRIP AT JUNCTION BOX. PROVIDE SO CORD TO A L6-30R (2 POLE, 3 WIRE GROUNDING) LOCKING CONNECTOR BODY. HARD WIRE LIFT WITH SO CORD AND PROVIDE A L6-30P (2 POLE, 3 WIRE GROUNDING) QUICK DISCONNECT LOCK PLUG. COORDINATE HEIGHT WITH OWNER'S REPRESENTATIVE PRIOR TO ROUGH-IN. JUNCTION BOX AND L6-30R SHALL BE LOCATED ON THE PASSENGERS SIDE OF LIFT.
- 12 TYPICAL OF (BAYS 1,2,4,5,6,7,8,9,10): PROVIDE A RECEPTACLE ON BOTTOM CHORD OF STRUCTURAL TRUSS FOR CORD REEL POWER CONNECTION. RECEPTACLE SHALL BE LOCATED ON THE PASSENGERS SIDE OF LIFT.
- 13 NOT USED.
- 14 NOT USED.
- 15 PROVIDE A 30A, 3P, 25AF DISCONNECT SWITCH IN NEMA 3 ENCLOSURE WITH 25A DUAL ELEMENT TIME DELAY FUSES AT +48" A.F.F. ON COMPRESSOR CLOSET WALL FOR LOCAL SHUTOFF OF SHIP AIR COMPRESSOR. VERIFY THE PRESENCE OF AN ON-BOARD MOTOR STARTER WITH THERMAL PROTECTION AND PROVIDE IF NOT ALREADY PRESENT. ALL FINAL CONNECTIONS BETWEEN DISCONNECT AND ON-BOARD STARTER (AS APPLICABLE) SHALL BE MADE VIA SEALTITE FLEXIBLE CONDUIT. VERIFY HORSEPOWER, VOLTAGE, AND BREAKER SIZE OF ACTUAL COMPRESSOR ORDERED PRIOR TO FINAL BREAKER/DISCONNECT/CONDUCTOR SELECTION. VERIFY LOCATION OF COMPRESSOR WITH OWNER'S REPRESENTATIVE PRIOR TO WORK. RUN #10 & #10 GROUND IN 1" AND USE PVC SCHEDULE 40 UNDERGROUND OUTSIDE ONLY.
- 16 ALL 20A 120V COMMENCEMENT DUPLEX AND QUAD RECEPTACLES IN GARAGE SHALL BE GFCI TYPE OR SHALL BE PROTECTED BY GFCI RATED BREAKERS PER NEC ARTICLE 511.12. ALL RECEPTACLES SHALL HAVE METAL FACEPLATES AND SHALL BE MOUNTED AT +54" A.F.F.
- 17 COORDINATE EXACT LOCATION OF THERMOSTAT WITH MECHANICAL PLANS AND MECHANICAL CONTRACTOR PRIOR TO ROUGH-IN.
- 18 NOT USED.
- 19 PROVIDE A DEDICATED NEMA 5-20 DUPLEX RECEPTACLE WITH GFCI PROTECTION AT +54" A.F.F. WHERE SHOWN FOR IRRIGATION CONTROLS. PROVIDE AND INSTALL A 1" PVC CONDUIT (AS NECESSARY) ROUTED BELOW GRADE FROM CONTROLLER TO AN ACCESSIBLE LOCATION AT BUILDING EXTERIOR AND CAP. COORDINATE WORK WITH OWNER AND LANDSCAPER (AS APPLICABLE).
- 20 ROUTE (2) SCHEDULE 40 PVC ELECTRICAL CONDUITS (SIZE AS SPECIFIED BY LOCAL UTILITY) AT LEAST 24" BELOW FINISHED GRADE FROM BUILDING EXTERIOR WALL BELOW TRANSOCKET METER TO NEW SECONDARY RISER POWER POLE (SITE VERIFY EXACT LOCATION). REFER TO SHEET E-4.01. (1) CONDUIT SHALL BE USED AS A RACEWAY FOR THE SERVICE ENTRANCE. (1) RACEWAY SHALL CONTAIN A 1/2" NYLON PULLSTRING AND SHALL BE USED AS A SPARE. COORDINATE NEW SERVICE ENTRANCE WITH LOCAL UTILITY.
- 21 ROUTE (1) 2" SCHEDULE 40 PVC TELEPHONE CONDUIT WITH PULLSTRING AT LEAST 24" BELOW FINISHED GRADE FROM UTILITY BUILDING DEMARK POINT TO A LOCATION ON PROPERTY LINE AS DICTATED BY THE UTILITY. STUB UP AND CAP CONDUIT AT BOTH ENDS. COORDINATE CONDUIT TERMINATION POINTS WITH UTILITY. CONDUITS MAY SHARE A COMMON TRENCH WITH OTHER POWER AND TELEPHONE DATA CONDUITS IF MINIMUM CONDUIT SPACE PER UTILITY SPECIFICATIONS IS ACHIEVED. COORDINATE TELEPHONE AND DATA ENTRANCE WITH LOCAL UTILITY.
- 22 DENOTES BUILDING MOUNTED UTILITY METER, AND SERVICE DISCONNECT. REFER TO SHEET E-4.01.
- 23 TYPICAL OF ALL TELEPHONE OR TELEPHONE/DATA RECEPTACLES: PROVIDE AND INSTALL A SINGLE (OR MULTI-GANG BOX IF NEAR OTHER POWER OR DATA RECEPTACLES) WITH BLANK COVER PLATE WHERE SHOWN. ROUTE A 3/4" EMT CONDUIT WITH PULLSTRING FROM JUNCTION BOX TO ACCESSIBLE ATTIC/STORAGE SPACE AND CAP.
- 24 NOT USED.
- 25 JUNCTION BOX MOUNTED MAX 12" OVER DOOR (LATCH-SIDE) WITH 3/4" CONDUIT INTO ATTIC SPACE FOR SECURITY WIRING (BY OTHERS).
- 26 PROVIDE (2) CONDUITS FOR STEREO EQUIPMENT FROM JUNCTION BOX LOCATED BELOW THE COUNTER AT +24" A.F.F. TO A 90° BEND STUBBED INTO ATTIC. PROVIDE (2) #18 SPEAKER WIRES FROM JUNCTION BOX AND RUN (1) #18 TO EACH SPEAKER. CONNECT TO SPEAKER AND PROVIDE 24 INCHES OF WIRES SLACK AT JUNCTION BOX.
- 27 PROVIDE SINGLE GANG BOX & 1" CONDUIT FOR SECURITY SYSTEM ALARM KEYPAD WITH 90° BEND INTO ATTIC WITH PULLSTRING.

- ELECTRICAL GENERAL NOTES:**
- A. REFER TO SHEET E-1.01 FOR GENERAL NOTES AND SYMBOLS THAT SHALL APPLY TO ALL SHEETS IN THIS SET UNLESS NOTED OTHERWISE IN THE KEYED NOTES.
 - B. ALL 120V 20A COMMENCEMENT AND TELEPHONE RECEPTACLES IN REPAIR AREA AND PERIMETER WALLS SHALL BE MOUNTED AT +54" A.F.F. UNLESS NOTED OTHERWISE.
 - C. ALL 120V 20A COMMENCEMENT RECEPTACLES SHALL EITHER HAVE INTERNAL GFCI PROTECTION, OR SHALL BE SERVED BY GFCI RATED BREAKERS PER NEC ARTICLE 511.12.
 - D. ALL MULTIWIRE CIRCUITS SHALL HAVE A MINIMUM NEUTRAL SIZE OF #10AWG.
 - E. ALL RECEPTACLES IN RECEPTION, OFFICE, SERVICE AREA, AND RESTROOMS SHALL BE MOUNTED AT +18" A.F.F. UNLESS OTHERWISE NOTED.
 - F. ALL WIRE SIZES SHALL BE #12 THIN/THIN, UNLESS NOTED OTHERWISE.
 - G. ALL CONDUIT SHALL BE 3/4" EMT, UNLESS NOTED OTHERWISE.
 - H. VERIFY ALL EQUIPMENT, EQUIPMENT PLACEMENT, AND EQUIPMENT MOUNTING HEIGHTS WITH OWNER'S REPRESENTATIVE.
 - I. VERIFY ALL EQUIPMENT OVERCURRENT PROTECTION WITH MANUFACTURER.
 - J. CONDUCTORS HAVE BEEN SIZED FOR A MAXIMUM VOLTAGE DROP OF 2% IN FEEDERS, AND 3% IN BRANCH CIRCUITS.
 - K. ALL OUTLETS, UNLESS OTHERWISE SPECIFIED, TO BE MINIMUM OF 20 AMPS.
 - L. UTILIZE SPARES AS NECESSARY FOR ADDITIONAL ELECTRICAL REQUIREMENTS.
 - M. NO WATER PIPING SHALL BE RUN DIRECTLY ABOVE ELECTRICAL PANELS.
 - N. ALL 20A 120V COMMENCEMENT RECEPTACLES LOCATED OUTDOORS, IN GARAGE, OR WITHIN 6'-0" OF WATER SUPPLYING PLUMBING FIXTURES SHALL HAVE GFCI PROTECTION.
 - O. ALL EXTERIOR HOMERUNS SHALL HAVE A MINIMUM CONDUCTOR SIZE OF #10AWG.
 - P. ALL ADJACENT POWER, DATA, AND TELEPHONE RECEPTACLES SHALL BE GANGED TOGETHER, AS PRACTICAL.
 - Q. THESE DRAWINGS ARE INTENDED TO BE COMPLETE AT THE TIME OF ISSUE, BUT WILL NOT REFLECT ANY NEW EQUIPMENT OR LIGHTS THAT MAY BE MOVED, ADDED, OR SUBSTITUTED AFTER THE ISSUE DATE. PROVIDE ALL NECESSARY BREAKERS, WIRING, CONDUITS, RECEPTACLES, JUNCTION BOXES, SWITCHES, ETC. FOR EQUIPMENT AND LIGHTS NOT SHOWN ON PLANS OR FOR EQUIPMENT AND LIGHTS THAT HAVE BEEN MOVED, SUBSTITUTED, OR ALTERED. VERIFY ALL ELECTRICAL REQUIREMENTS OF NEW OR ALTERNATE EQUIPMENT AND LIGHTS WITH MANUFACTURER. CONTACT ELECTRICAL ENGINEER IF ANY DISCREPANCIES ARISE.
 - R. ELECTRICAL RECEPTACLES ARE TO BE WHITE IN THE OFFICE AREA WITH WHITE COVERPLATES AND BLACK IN THE SHOP AREA WITH STAINLESS STEEL COVERPLATES.
- 28 NOT USED.
 - 29 PROVIDE TELEPHONE EQUIPMENT BACKBOARD. REFER TO #1/E-4.01.
 - 30 CONNECT GFI RECEPTACLE LOCATED IN ATTIC TO THE SAME CIRCUIT FEEDING THE ATTIC LIGHT. SEE KEYED NOTE #1 ON SHEET E-2.01.
 - 31 NOT USED.
 - 32 NOT USED.
 - 33 PROVIDE 1" CONDUIT FROM DEMARK POINT ON TECH RR EXTERIOR WALL THROUGH SLAB TO TELEPHONE UTILITY POINT OF CONNECTION.
 - 34 PROVIDE PHONE/DATA BACKBOARD. PAINT WALL COLOR.
 - 35 NOT USED.
 - 36 JUNCTION BOX MOUNTED AT 18" OFF FRONT AND BACK WALLS & 18" AFF WITH 3/4" CONDUIT INTO ATTIC SPACE FOR SECURITY WIRING (BY OTHERS)
 - 37 PROVIDE 1" CONDUIT MOUNTED 78" AFF TO RUN INTO ATTIC FOR LOW VOLTAGE WIRING (BY OTHERS)
 - 38 QUAD RECEPTACLE AT THIS LOCATION TO BE NEMA 5-20R.
 - 39 NOT USED.
 - 40 PROVIDE SPLIT QUAD CONTROLLED RECEPTACLE PER DETAIL 06/E-3.01 AND 04/E-2.01.
 - 41 3" CONDUIT STUB UP INTO ATTIC. CONDUIT TO TURN AND EXTEND INTO THE ATTIC TOWARDS THE ACCESS LADDER.
 - 42 DATA OUTLET MOUNTED AT +120" AFF. PROVIDE 3" CONDUIT INTO ATTIC SPACE FOR LOW VOLTAGE WIRING. VERIFY LOCATIONS WITH CBAC PM PRIOR TO ROUGH-IN AND INSTALLATION.
 - 43 WEATHERPROOF DATA OUTLET MOUNTED AT +18" ABOVE EXTERIOR LIGHT FIXTURE AND PROVIDE 3/4" CONDUIT INTO ATTIC SPACE FOR LOW VOLTAGE WIRING. VERIFY LOCATIONS WITH CBAC PM PRIOR TO ROUGH-IN AND INSTALLATION. PAINT TO MATCH FACADE.
 - 44 WEATHERPROOF DATA OUTLET MOUNTED AT 120" AFF CENTERED ON WINDOW. PROVIDE 3/4" CONDUIT INTO ATTIC SPACE FOR LOW VOLTAGE WIRING. VERIFY LOCATIONS WITH CBAC PM PRIOR TO ROUGH-IN AND INSTALLATION. PAINT TO MATCH FACADE.
 - 45 ACTIVATES ALONG WITH SMOKE DETECTOR DEVICE, LOCATED AT A MANNED LOCATION TO WARN OCCUPANTS OF POSSIBLE PROBLEMS.

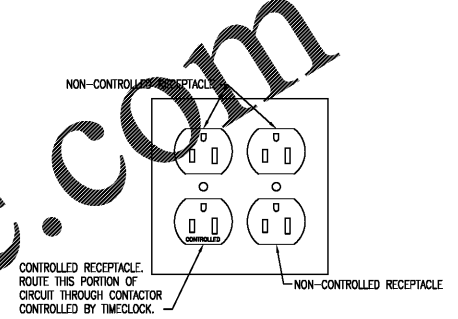
*NOTE: ALIGN ON CENTERLINE OF PLASTER



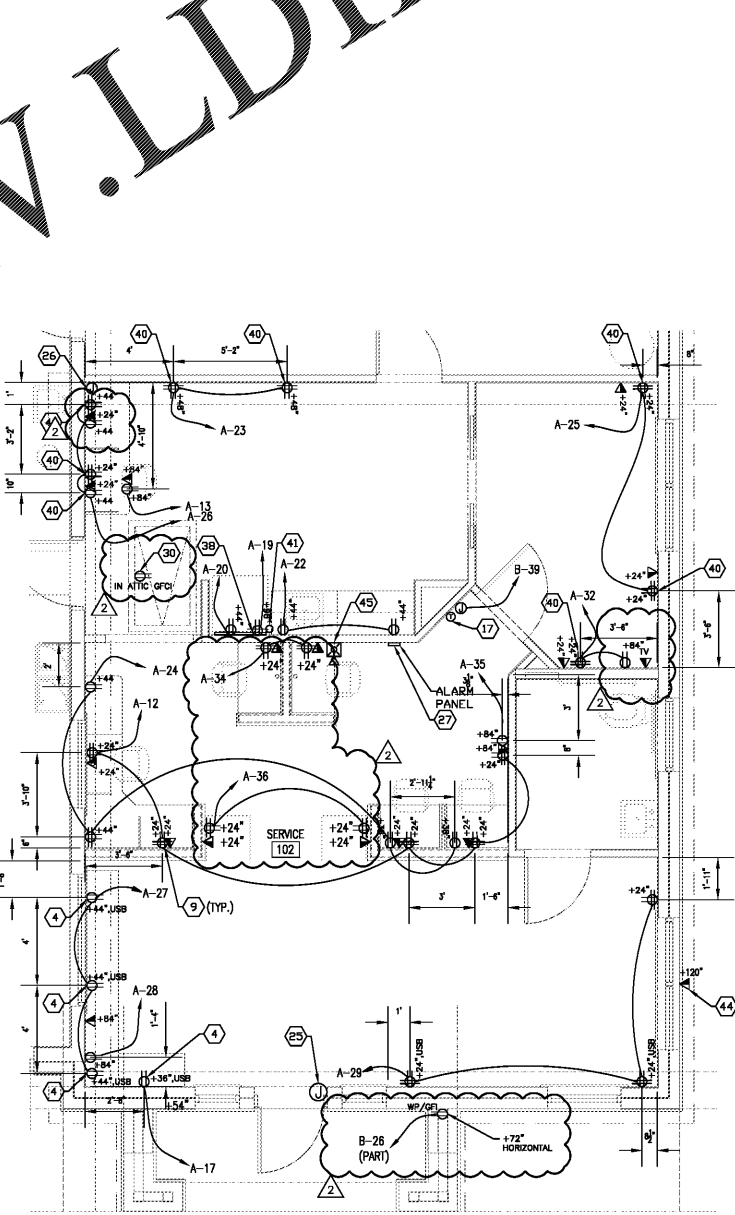
3 LIFT SERVICE CONFIGURATION
SCALE: NONE



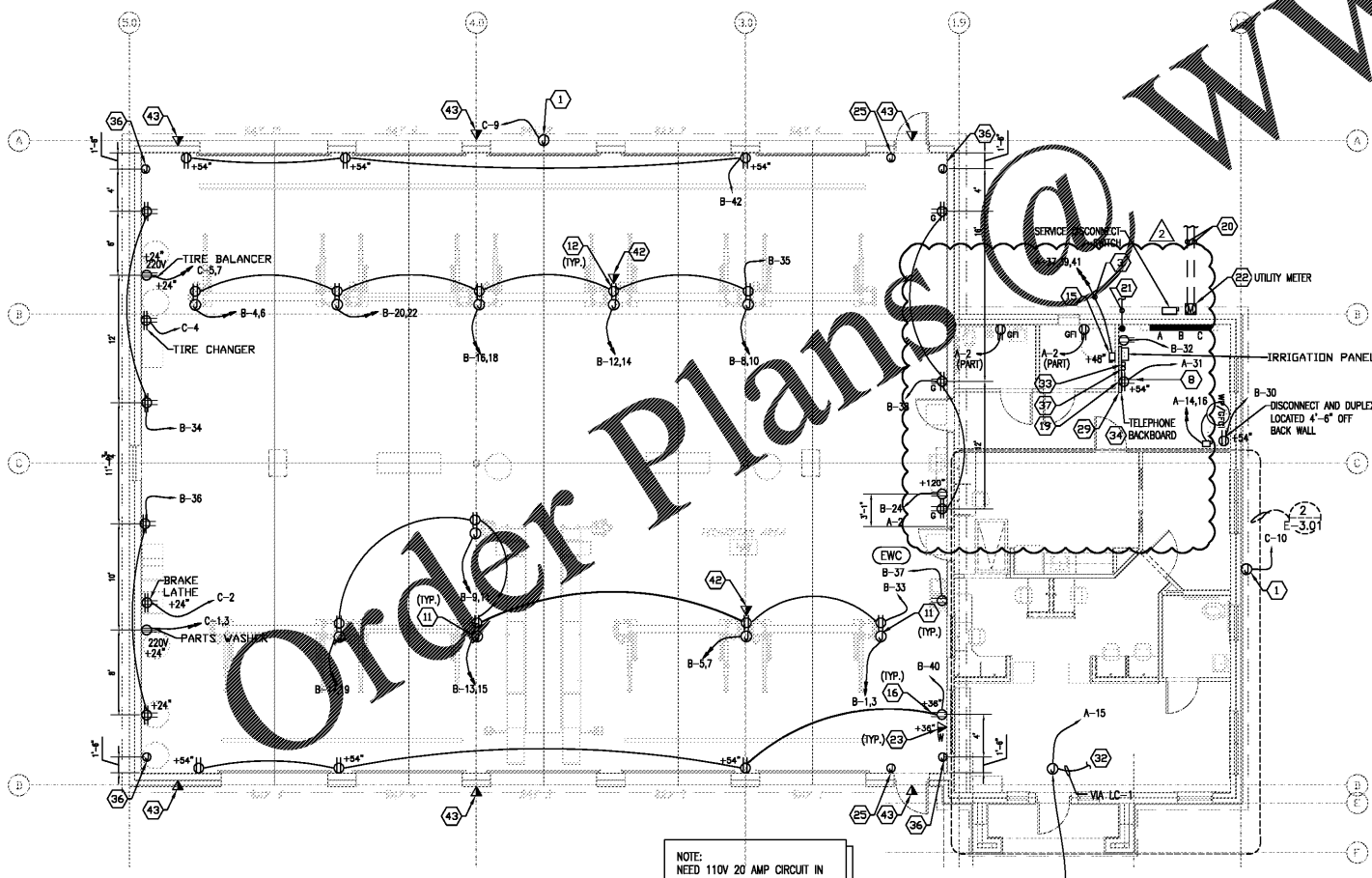
5 STORAGE ROOM CONFIGURATION
SCALE: 1/4"=1'-0"



4 MOUNTING HEIGHT DETAIL
SCALE: NONE



6 CONTROLLED RECEPTACLE DETAIL
SCALE: 1/4"=1'-0"



1 ELECTRICAL POWER PLAN
SCALE: 1/8"=1'-0"

NOTE: NEED 110V 20 AMP CIRCUIT IN ATTIC FOR LIT CHANNELLED LOGO BUILDING LIGHTING. RUN CONDUIT ABOVE LEVEL OF LOGO, JUST BELOW TRUSS JOISTS. (SIGN CO. WILL RUN PIGTAIL TO BOX)

2 PARTIAL ELECTRICAL POWER PLAN
SCALE: 1/4"=1'-0"

THIS SHEET IS PART OF THE CONSTRUCTION DOCUMENTS. OTHER SHEETS INCLUDING SPECIFICATIONS APPLY. THAT SHOWN HEREON IS SCHEMATIC IN NATURE AND NOT TO BE USED AS A SHOP DRAWING. THEREFORE, INCLUDE ALL MODIFICATIONS REQUIRED TO CONFORM TO SITE CONDITIONS AND THE EQUIPMENT AND MATERIAL USED. VERIFY LOCATIONS AND DIMENSIONS OF ALL ARCHITECTURAL AND STRUCTURAL ELEMENTS AS SHOWN ON THEIR RESPECTIVE DOCUMENTS. THESE ELEMENTS ARE SHOWN FOR REFERENCE AND SHALL BE VERIFIED PRIOR TO CONSTRUCTION AND THE ENGINEER ASSUMES NO LIABILITY FOR THE ACCURACY OF THESE ELEMENTS. NO DESIGN RESPONSIBILITY IS ASSUMED FOR ANY PORTION OF THE WORK THAT THE PROFESSIONAL ENGINEER HAS NOT SIGNED AND SEALED PER STATE/PROVINCE REQUIREMENTS.

Dialectic

Dialectic Inc.
310 W 20th Street, Suite 200
Kansas City, MO 64108
Florida Certificate of Authorization Number 8039

T 816-997-9601
F 816-997-9602
DialecticEng.com
Copyright 2020



STEWART + REINHERM
ARCHITECTURE, PLLC
360
5450 E. High Street, Suite 200
Phoenix, Arizona 85054
P: 480.515.5123
www.sra360.com

**Christian Brothers
Automotive**
Wickham Road
Melbourne, Florida

**Christian Brothers
Automotive**
17725 Katy Freeway, St. 200
Houston, TX 77064

PROFESSIONAL ENGINEER
STATE OF FLORIDA
P.E. 76324
4/15/20
Date

Revisions

1/23/20 - Prototype Update
4/1/20 - City Comments
4/9/20 - T2 Client Rev.

Project No. 19-097
Drawn By:
Date: 03/06/20
Sheet Title:

**ELECTRICAL
POWER PLAN**

Drawing No.
E-3.01
10RHS-11-2019