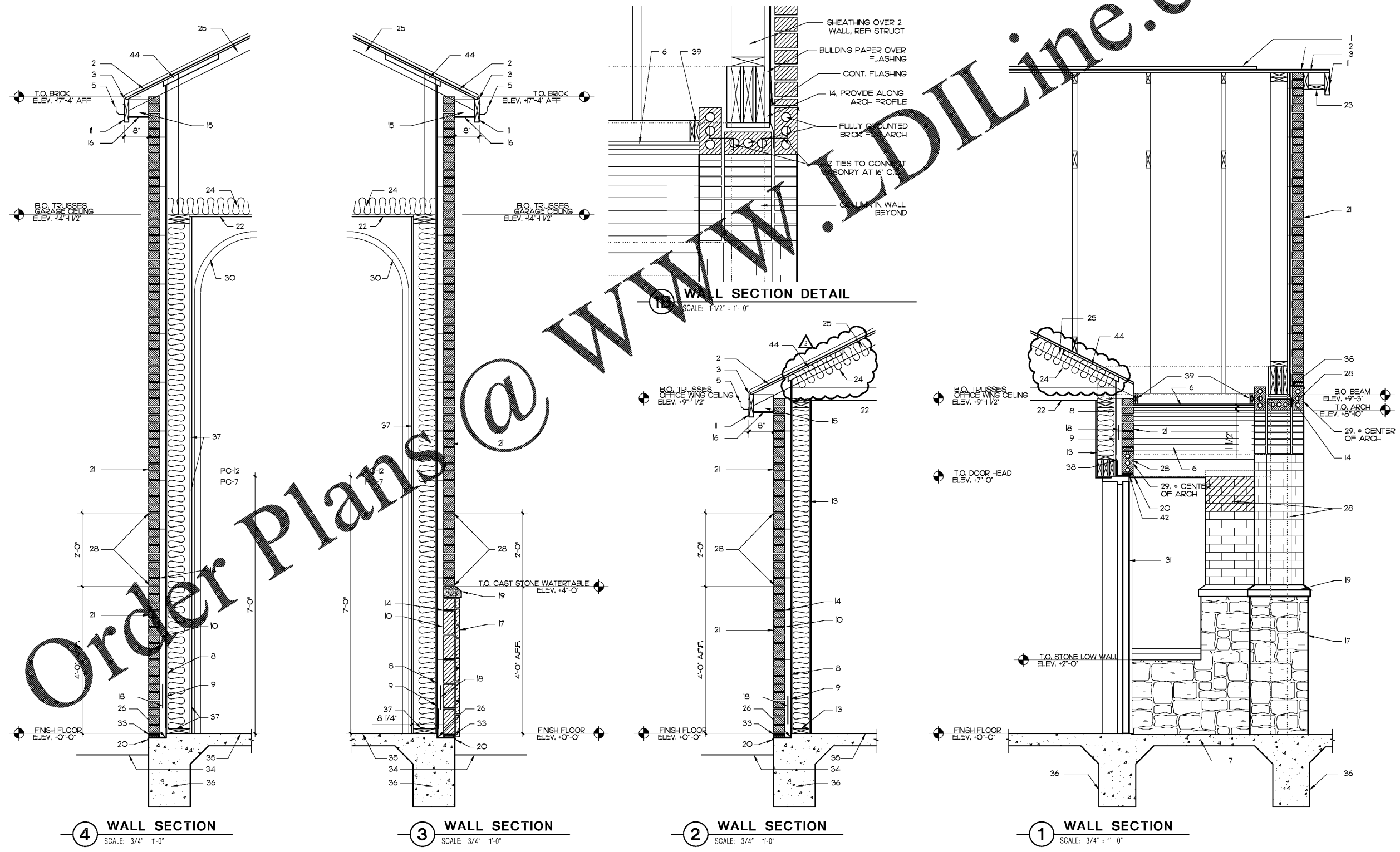


KEYED SECTIONS NOTES

1. ASPHALT COMPOSITION SHINGLE ROOF CONTINUOUS RIDGE VENTS. CUT DECKING BACK 3" FOR AIR GAP AT RIDGE (1/2" ON EACH SIDE). SEE WWW.TAMKO.COM FOR ADDITIONAL APPLICATION INSTRUCTIONS.
2. ARCHITECTURAL COMPOSITION SHINGLES OVER 30# FELT UNDERLAYMENT OVER TYPE CDX PLYWOOD ROOF DECK, REF: STRUCT FOR SIZE.
3. LEAVE FLASHING, 4" END LAPS W/CONT. CALK AT LAPS. SEE MANUF. INSTALLATION DETAILS.
4. FLASHING AS SHOWN IN DETAILS - PAINTED TO MATCH ADJACENT BRICK MATERIAL (COLOR MATCH M-5).
5. PREFINISHED ALUMINUM GUTTER, PC-5.
6. CURVED WATER RESISTANT GYP. BD. WITH ORANGE PEEL FINISH PAINT SOFFIT, PC-4.
7. STAMPED CONCRETE AT FRONT PORCH. SEE STRUCTURAL FOUNDATION PLANS AND SEE DETAILS ON A-1.
8. CDX EXT PLYWOOD SHEATHING, REF: STRUCT
9. DUPONT TYVEK COMMERCIALWRAP AIR AND WATER BARRIER, OVERLAP FLASHING
10. AIR GAP
11. ALUMINUM OR VINYL SIDING OVER 2 8 WOOD FASCIA, PC-5.
12. MDF RETURNS ON ALL WINDOWS.
13. 1/2" GYP. BD. W/MESH TAPE, ON 2 6 WOOD STUDS AT 16" O.C. WITH R-21 BATT INSULATION.
14. HOT DIPPED GALVANIZED MASONRY ANCHORS/WALL TIE BACKS # 16" OC HORIZONTALLY MAX. AND 16" OC VERTICALLY MAX.
15. 2 6 BLOCKING NAILED TO TRUSSES TO CARRY SOFFIT.
16. CONTINUOUS VINYL SOFFIT VENTS- TYPICAL. KEEP INSULATION CLEAR FROM AIR FLOW, PC-5.
17. 1 1/2" LIMESTONE VENEER OVER 4" CMU BLOCK BASE.
18. MORTAR DEFLECTION DEVICE.
19. PRECAST CONCRETE WATERTABLE OR SILL, REF: A-5.
20. 1 1/2" 5 1/2" BRICK LEDGE WITH CONT. METAL DRIP EDGE SET IN MASTIC OR SEALANT.
21. SCHEDULED BRICK, COLOR M-5.
22. 5/8" GYP. BD. CEILING W/MESH TAPE, ATTACHED TO TRUSS.
23. 2 WOOD BLOCKING/VALER.
24. UNFACED BATT INSULATION- R-48 MIN TYP. ALL AREAS. INSL. TO BE LIGHTING RATED.
25. WOOD TRUSSES, RE: STRUCTURAL
26. CONT. FLEXIBLE BASE FLASHING. EXTEND FROM MIN. 8" AFF. TO EDGE OF SLAB
27. ELECTRIC DRINKING FOUNTAINS, RE: PLUMB
28. SCHEDULED BRICK, COLOR M-5.
29. PRECAST CONCRETE KEYSTONE, SEE A-5.
30. SCHED. DOOR AND TRACK (BEYOND) TO EXTEND 13'-6" AFF.
31. SCHEDULED DOOR AND FRAME.
32. SCHEDULED WINDOW AND FRAME
33. PROVIDE WEEP HOLES/VENTS IN BOTTOM OF STONE/BRICK BASE COURSE, AND ABOVE MASONRY LINTELS EVERY 24" O.C.
34. FINISH GRADE, MIN. 7 1/2" BFF AT LANDSCAPE AREAS, REF: CIVL
35. CONCRETE SLAB, REF: STRUCT
36. FOUNDATION WALL, REF: STRUCT
37. 5/8" SMOOTH PLYWOOD (SANDED) TO 7'-0" AFF AND 5/8" GYP. BD. W/MESH TAPE FROM 7'-0" AFF TO CEILING - PROVIDE METAL TRANSITION BETWEEN FINISHES TO CREATE STRAIGHT EDGE, ON 2 8 WOOD STUDS AT 16" O.C. WITH R-21 BATT INSULATION.
38. CONT. FLEXIBLE WINDOW/DOOR FLASHING. USE FLASHING END DAMS AT EDGES OF OPENINGS.
39. 2 LAYERS 3/4" PLYWOOD CURVED TO MATCH ARCH. SECURED TO BRICK AND OFFICE WALL TO SUPPORT WOOD BLOCKING FOR PORCH CEILING FINISH.
40. NOT USED.
41. 1/2" THIN BRICK VENEER TO MATCH M-5.
42. 4" 4" 1/4" F.E.E.L. LINTEL, REF: STRUCT, PAINTED WHITE
43. NOT USED.
44. SOFFIT VENT Baffle, REF: STRUCT DETAIL. NO NOTCHES IN BLOCKING TO ALLOW FOR SOFFIT VENTILATION.

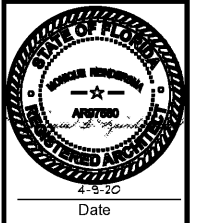


Order Plans @ WWW.LDILine.com



Christian Brothers Automotive
 Wickham Road
 Melbourne, Florida

Christian Brothers Automotive
 17725 Katy Freeway, St. 200
 Houston, TX 77094



Revisions	
1/23/20	Prototype Update
4/1/20	City Comments
4/9/20	T2 Client Rev.

Project No. 19-097
 Drawn By:
 Date: 03/06/20
 Sheet Title:

WALL SECTIONS
 Drawing No. **A-6**
 10RHS-11-2019