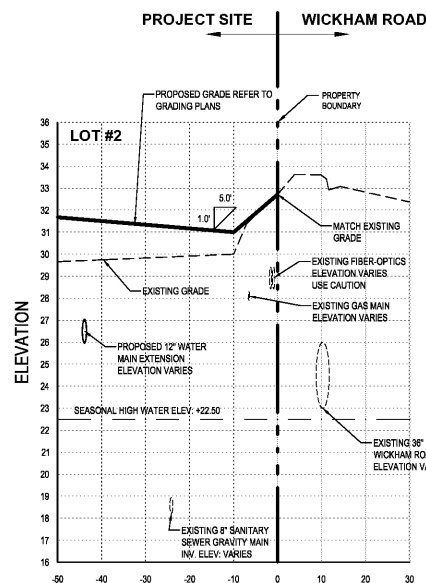
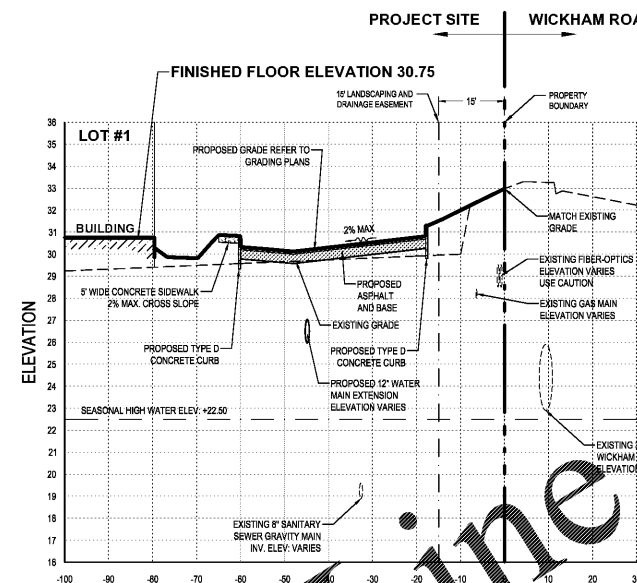


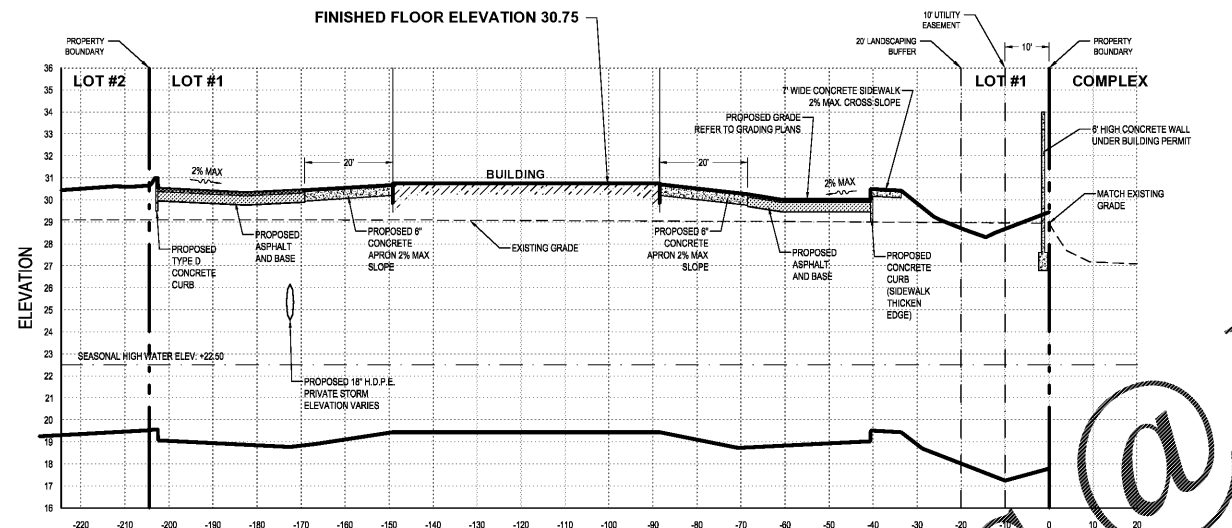
SECTION A-A



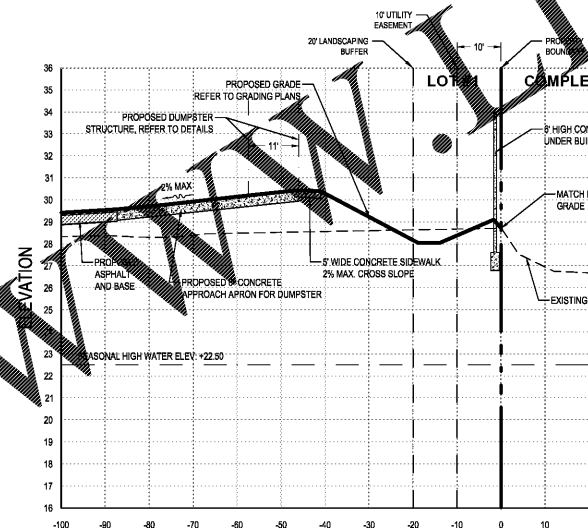
SECTION B-B



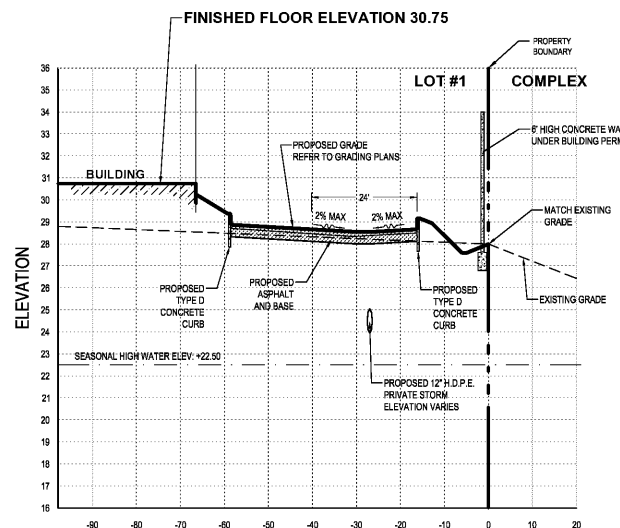
SECTION C-C



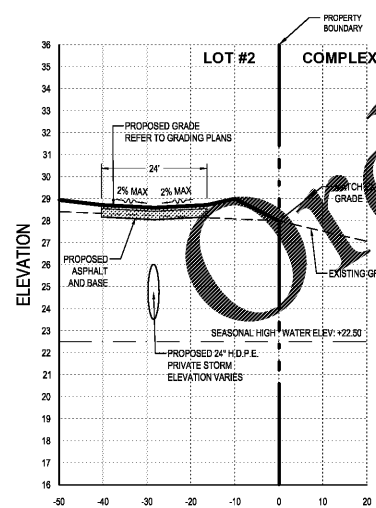
SECTION D-D



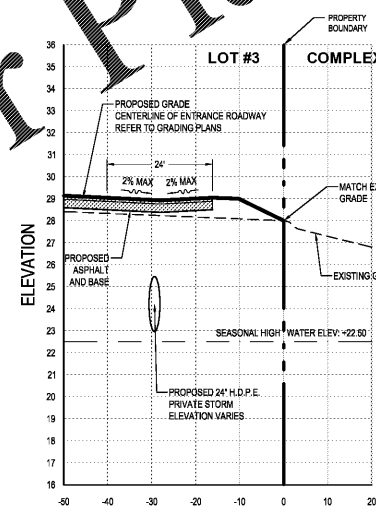
SECTION E-E



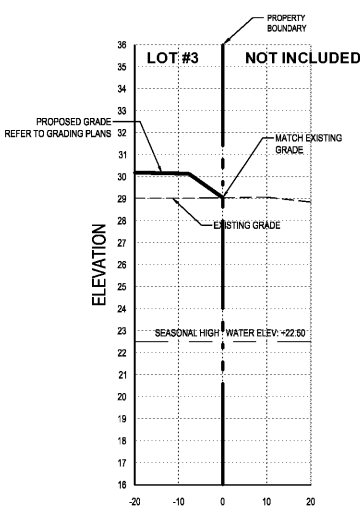
SECTION F-F



SECTION G-G



SECTION H-H



SECTION I-I

STORM DRAIN STRUCTURE SCHEDULE			
STRUCTURE	DETAILS	PIPES IN	PIPES OUT
EXM-01 Index No. 430 - Creek Drain MES with 1:4 Slope EXISTING TO REMAIN	EXISTING INV IN = 18.00	EXISTING EXDP-01 216" LF 24" RCP @ 0.00% INV IN = 18.00 (SW)	
CB-02 Index No. 425 - Ditch Bottom Inlet - Type E 3.0' x 4.5'	RIM = 28.50 SUMP = 18.50 INV IN = 23.00 INV OUT = 18.00	DPC-02 148" LF 24" RCP @ 0.50% INV IN = 23.00 (SE) INV IN = 18.00 (NE)	EXISTING EXDP-01 216" LF 24" RCP @ 0.00% INV IN = 18.00 (NE)
CB-03 Index No. 425 - Ditch Bottom Inlet - Type E 3.0' x 4.5'	RIM = 28.50 SUMP = 22.25 INV IN = 23.75 INV OUT = 23.75	DPC-03 138" LF 24" RCP @ 0.18% INV IN = 23.75 (SE) INV IN = 23.75 (SE)	DPC-02 148" LF 24" RCP @ 0.50% INV IN = 23.75 (NW)
MH-04 Index No. 425 - Type P Manhole, Round Bottom 4.0' DIAMETER	RIM = 28.50 SUMP = 22.50 INV IN = 24.00 INV IN = 24.00 INV OUT = 24.00	DPC-04 51" LF 18" RCP @ 0.00% INV IN = 24.00 (SE) DPC-05 174" LF 18" RCP @ 0.57% INV IN = 24.00 (SW)	DPC-03 138" LF 24" RCP @ 0.18% INV IN = 24.00 (NW)
CB-05 Index No. 425 - Ditch Bottom Inlet - Type C 2.0' x 3.0'	RIM = 28.50 SUMP = 24.00 INV IN = 24.00 INV OUT = 24.00	DPC-05 83" LF 12" RCP @ 0.00% INV IN = 24.00 (SE) INV IN = 24.00 (SE)	DPC-04 51" LF 18" RCP @ 0.00% INV IN = 24.00 (NW)
YD-06 ADS YARD DRAIN 18" DIAMETER	RIM = 27.00 SUMP = 24.00 INV IN = 24.00		DPC-05 83" LF 12" RCP @ 0.00% INV IN = 24.00 (NW)
CB-07 Index No. 425 - Ditch Bottom Inlet - Type C 2.0' x 3.0'	RIM = 29.50 SUMP = 23.50 INV IN = 25.00 INV OUT = 25.00	DPC-07 34" LF 12" RCP @ 2.90% INV IN = 25.00 (SE)	DPC-06 174" LF 18" RCP @ 0.57% INV IN = 25.00 (NE)
YD-08 ADS YARD DRAIN 18" DIAMETER	RIM = 29.50 SUMP = 26.00 INV IN = 26.00		DPC-07 34" LF 12" RCP @ 2.90% INV IN = 26.00 (NW)

STORM DRAIN PIPE SCHEDULE							
PIPE ID	UPSTREAM	DOWNSTREAM	LENGTH	SIZE	TYPE / CLASS	SLOPE	COMMENTS
DPC-02	CB-02	CB-03	148'	24"	H.D.P.E.	0.50%	
DPC-03	CB-03	MH-04	138'	24"	H.D.P.E.	0.18%	
DPC-04	MH-04	CB-05	51'	18"	H.D.P.E.	0.00%	
DPC-05	CB-05	YD-06	83'	12"	H.D.P.E.	0.00%	
DPC-06	MH-04	CB-07	174'	18"	H.D.P.E.	0.57%	
DPC-07	CB-07	YD-08	34'	12"	H.D.P.E.	2.90%	
EXDP-01	EXM-01	CB-02	216'	24"	H.D.P.E.	0.00%	EXISTING TO REMAIN

PRIMARY BENCHMARK:
THE ELEVATIONS SHOWN HEREIN ARE BASED UPON NORTH AMERICAN VERTICAL DATUM OF 1988 (NAV/D88) REFERENCING BREVARD COUNTY BENCHMARK 'G6A03' AND 'G6A04'.

PROFILE SCALE
HORIZONTAL SCALE: 1" = 20'
VERTICAL SCALE: 1" = 4'



MBV ENGINEERING, INC.
Civil • Structural • Surveying • Environmental
1200 W. Eau Gallie Blvd., Suite 110
Melbourne, Florida 32935
P: 321-253-1510 F: 321-253-0911
VERO: 772-962-0035 FT. PIERCE: 772-468-8095
CAM723

DESIGNED 19-1045
DRAWN BUD
DATE OCTOBER 2019
CHECKED BAM
DATE ISSUED 5/7/2020

REVISIONS

NO.	DATE	DESCRIPTION
1		
2		
3		
4		
5		
6		
7		
8		

CHRISTIAN BROTHERS AUTOMOTIVE REPAIRS
BREVARD COUNTY, FLORIDA

BRUCE A. MOIA
FL. P.E. #47529
STATE OF FLORIDA
PROFESSIONAL ENGINEER

BRUCE A. MOIA
FL. P.E. #47529
DATE: 5/7/2020
SHEET

C-11

19-1045
PERMITTING SET