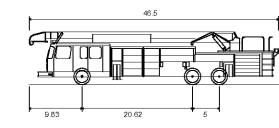


EXISTING COMPLEX



BREVARD COUNTY FIRE TRUCK
 Overall Length 46.500ft
 Overall Width 9.833ft
 Overall Body Height 20.62ft
 Min Body Ground Clearance 5.00ft
 Track Width 8.620ft
 Lock-to-lock time 6.08s
 Max Wheel Angle 45.00°

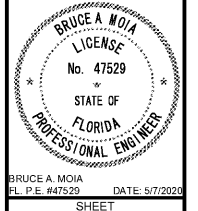
| NO. | DATE | REVISIONS |
|-----|------|-----------|
| 1 | | |
| 2 | | |
| 3 | | |
| 4 | | |
| 5 | | |
| 6 | | |
| 7 | | |
| 8 | | |

| DATE | ISSUED | BY | DATE | ISSUED | BY |
|----------|----------|--------------|----------|--------|----|
| 19-10-45 | BID | BID | 5/7/2020 | BAM | |
| | DESIGNED | BID | | | |
| | DRAWN | BID | | | |
| | DATE | OCTOBER 2019 | | | |
| | CHECKED | | | | |

MBV ENGINEERING, INC.
 P.O. BOX 888888 MELBOURNE, FLORIDA 32908
 1200 W. EAU GALLE BLVD., SUITE 110
 MELBOURNE, FLORIDA 32905
 P. 321-253-1510 F. 321-253-0811
 VERO 772-962-0035 FT. PIERCE 772-468-8095
 CIVIL • STRUCTURAL • SURVEYING • ENVIRONMENTAL

FIRE ACCESS PLAN

CHRISTIAN BROTHERS
 AUTOMOTIVE REPAIRS
 BREVARD COUNTY
 FLORIDA



BRUCE A. MOIA
 FL P.E. #47529
 DATE: 5/7/2020
 SHEET
C-9

PAVEMENT MARKINGS AND SIGNAGE LEGEND

⑥ BLUE RPM IN CENTER OF LANE ADJACENT TO FIRE HYDRANT

FIRE PREVENTION NOTES

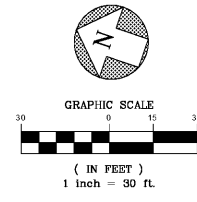
- FIRE DEPARTMENT ACCESS ROADS SHALL HAVE AN UNOBSTRUCTED VERTICAL CLEARANCE OF NOT LESS THAN 13 FT 6 IN. (4.1 M). (FFPC 1-18-2.3.4.1.2)
- FIRE DEPARTMENT ACCESS ROADS SHALL BE PROVIDED SUCH THAT ANY PORTION OF THE FACILITY OR ANY PORTION OF AN EXTERIOR WALL OF THE FIRST STORY OF THE BUILDING IS LOCATED NOT MORE THAN 150 FT (46 M) FROM FIRE DEPARTMENT ACCESS ROADS AS MEASURED BY AN APPROVED ROUTE AROUND THE EXTERIOR OF THE BUILDING OR FACILITY. (FFPC 1-18-2.3.2.2)

GENERAL NOTES:
 1) A SEPARATE PERMIT IS REQUIRED BY BREVARD COUNTY FIRE DEPARTMENT FOR WATER MAINS CONTAINING FIRE FIGHTING HYDRANTS OR SPRINKLER SYSTEMS. THE PROPOSED WATER MAIN EXTENSION IS UTILIZED FOR FIRE FIGHTING THUS A PERMIT IS REQUIRED.
 2) ALL WATER UTILITY WORK IS TO BE CONSTRUCTED IN ACCORDANCE WITH THE LATEST CITY OF COCOA STANDARDS.

FIRE FLOW CALCULATIONS

| BUILDING DESCRIPTION | FLOOR AREA (Sq. FT) | FIRE FLOW (TABLE 18.4.5.1.2) | CONSTRUCTION TYPE V (000) | FIRE FLOW SUBTOTAL (GPM) | HAZARD CLASSIF. % | FIRE FLOW SUBTOTAL (GPM) | EXPOSURE % | REQUIRED FIRE FLOW (GPM) | AUTOMATED SPRINKLER REDUCTION (-75%) | ACTUAL FIRE FLOW REQUIREMENT (GPM) | HYDRANTS REQUIRED | HYDRANTS SUPPLIED |
|----------------------|---------------------|------------------------------|---------------------------|--------------------------|-------------------|--------------------------|------------|--------------------------|--------------------------------------|------------------------------------|-------------------|-------------------|
| LOT #1 AUTO REPAIR | 6,030 | 2,030 | 1.0 | 2,030 | 0% | 2,030 | 0% | 2,030 | 0 | 2,030 | 2.0 | 2" |

* LOT #1: MINOR AUTOMOTIVE REPAIR ONLY WITH NO TIRE STORAGE NOR HAZARDOUS MATERIAL STORAGE. PROJECT IS ONE STORY STRUCTURE WITH NO MEZZANINE STORAGE.



Order Plans @ www.wldilne.com

