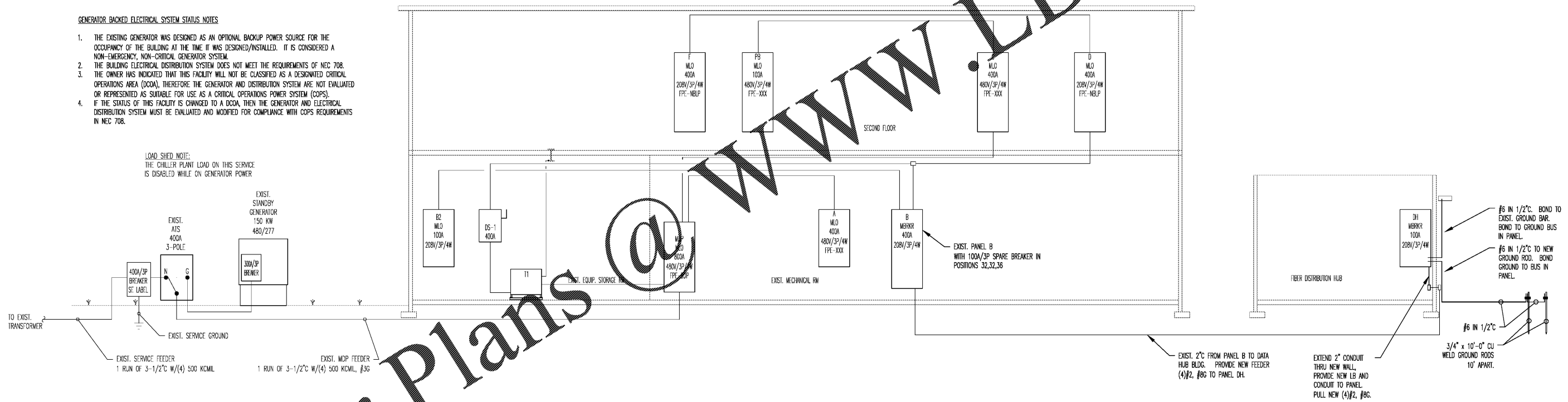


WWW.LDILine.com

GENERATOR BACKED ELECTRICAL SYSTEM STATUS NOTES

1. THE EXISTING GENERATOR WAS DESIGNED AS AN OPTIONAL BACKUP POWER SOURCE FOR THE OCCUPANCY OF THE BUILDING AT THE TIME IT WAS DESIGNED/INSTALLED. IT IS CONSIDERED A NON-EMERGENCY, NON-CRITICAL GENERATOR SYSTEM.
2. THE BUILDING ELECTRICAL DISTRIBUTION SYSTEM DOES NOT MEET THE REQUIREMENTS OF NEC 708.
3. THE OWNER HAS INDICATED THAT THIS FACILITY WILL NOT BE CLASSIFIED AS A DESIGNATED CRITICAL OPERATIONS AREA (DCCA), THEREFORE THE GENERATOR AND DISTRIBUTION SYSTEM ARE NOT EVALUATED OR REPRESENTED AS SUITABLE FOR USE AS A CRITICAL OPERATIONS POWER SYSTEM (COPS).
4. IF THE STATUS OF THIS FACILITY IS CHANGED TO A DCCA, THEN THE GENERATOR AND ELECTRICAL DISTRIBUTION SYSTEM MUST BE EVALUATED AND MODIFIED FOR COMPLIANCE WITH COPS REQUIREMENTS IN NEC 708.

LOAD SHED NOTE:
THE CHILLER PLANT LOAD ON THIS SERVICE IS DISABLED WHILE ON GENERATOR POWER



Order Plans

ELECTRICAL RISER DIAGRAM
SCALE: NONE
E6.1



TRIAD ENGINEERING CONSULTANTS, INC.
2638 Willard Dairy Road
Suite 100
High Point, NC 27265
Firm License #C-0492
Phone: (336) 454-0225
email: Admin@TriadEngMEP.com

Renovations to Former Play Shelter
GTCC Secondary Data Hub
601 East Main Street
Jamestown, NC 27282
Drawing Title: ELECTRICAL RISER DIAGRAM

By Revision

PROJECT NUMBER
2020-008

DATE
May 4, 2020

Sheet:
E6.1

© COPYRIGHT 2020
NO PART OF THIS DRAWING MAY BE REPRODUCED
WITHOUT THE WRITTEN CONSENT OF
ERIC SUTHERLAND & ASSOCIATES, PA

310 East Sylvan Street, Suite A
Jamestown, NC 27282
P: 336.574.1818
www.eric-sutherland.com

ESP/IA
ARCHITECTS & PLANNERS

inspire create transform