

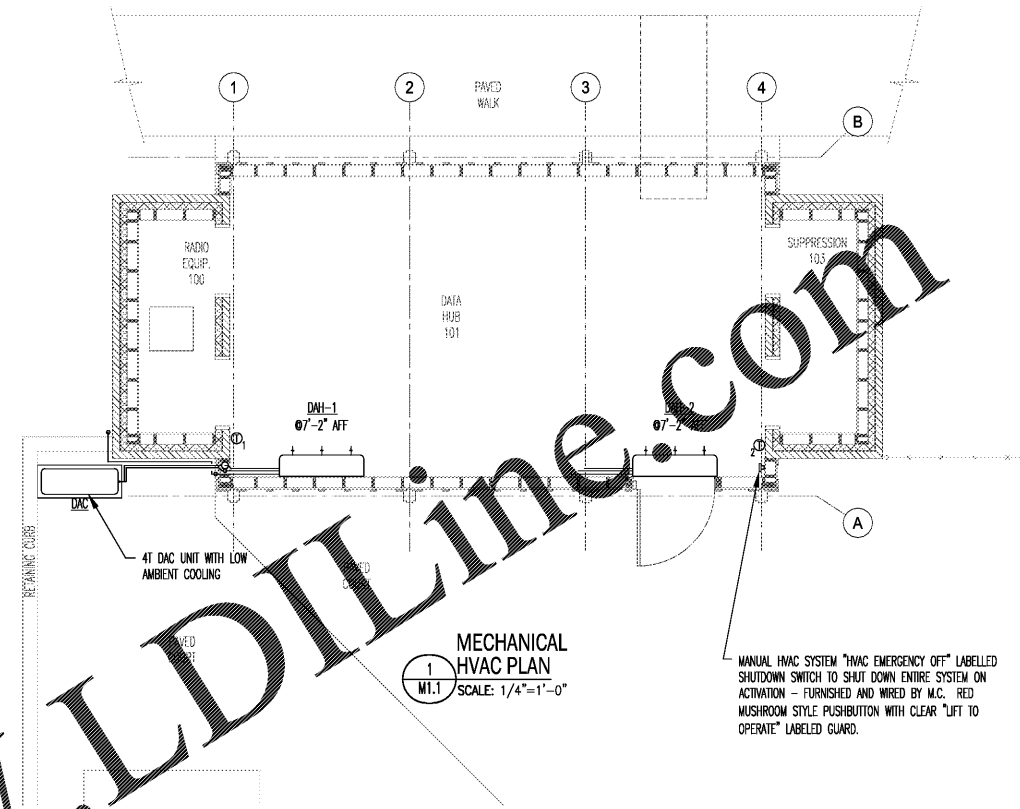
Order Plans @ www.LDILine.com

DUCTLESS SPLIT CONDENSING UNIT SCHEDULE														
MARK	MANUFACTURER (OR EQUAL)	MODEL	AHR1 COOLING CAPACITY			MATCHED AHU	AHR1 HEATING CAPACITY		EFFICIENCY		ELECTRICAL			REMARKS
			TOTAL BTUH	PART LOAD MIN. CAP.	EFFICIENCY SEER		HI TEMP BTUH	LOW TEMP BTUH	HI TEMP COP	HI TEMP COP	VOLTAGE	MCA	MOCP	
DAC 1	MITSUBISHI	TUMYP-048-1AK-42NA	44,542	16,000	13.1	DH1 1&2	52,931	---	4.0	---	208/1/60	29	45	SEE NOTES

NOTES:
 1. PROVIDE REFRIGERANT PIPING SIZED PER MANUFACTURER'S INSTRUCTIONS FROM OUTDOOR UNIT TO COOLING COIL ON THE RESPECTIVE AIR HANDLING UNIT.
 2. EQUAL MODELS BY CARRIER, DAIKIN, OR SAMSUNG ARE ACCEPTABLE PROVIDED ELECTRICAL MODIFICATIONS ARE MADE AS REQUIRED.
 3. INVERTER CONTROLLED COMPRESSOR.
 4. MOUNT ON LEVEL CONCRETE PAD 12" LARGER THAN UNIT. ANCHOR UNIT TO PAD.
 5. COOLING OPERATION TO 5F AMBIENT

DUCTLESS SPLIT AIR HANDLING UNIT SCHEDULE											
MARK	MANUFACTURER (OR EQUAL)	MODEL	FAN AIRFLOW (CFM)	E.S.P. (IN20)	FAN HP	AUXILIARY STRIP HEAT (KW)	ELECTRICAL		APPROXIMATE WEIGHT (LBS)	UNIT VOLTAGE	REMARKS
							MCA	MOCP			
DAH 1	MITSUBISHI	TPKFYP-024-KM142A	920	---	---	---	0.63	15	50	208/1/60	SEE NOTES
DAH 2	MITSUBISHI	TPKFYP-024-KM142A	920	---	---	---	0.63	15	50	208/1/60	SEE NOTES

NOTES:
 1. INDOOR UNITS PIPED TO DHP UNIT.
 2. EQUAL MODELS BY CARRIER, DAIKIN, OR SAMSUNG OR ARE ACCEPTABLE
 3. PROVIDE WIRED THERMOSTAT - MOUNT 44" AFF. SURFACE MOUNT CONTROL WIRING IN 1/2" CONDUIT STRAPPED TO WALL.
 4. WALL UNITS SECURED TO WALL FRAMING.
 5. FURNISH WITH UNIT POWERED CONDENSATE PUMP.



- GENERAL MECHANICAL NOTES
- ALL WORK AND MATERIALS SHALL BE IN ACCORDANCE WITH THE APPLICABLE SECTIONS OF THE N.C. STATE BUILDING CODE AND LOCAL CODES AND ORDINANCES.
 - OBTAIN AND PAY FOR ALL PERMITS, FEES, INSPECTIONS ETC. AS REQUIRED FOR WORK UNDER THIS CONTRACT.
 - CONCEAL ALL REFRIGERANT LINESETS IN WALLS AND CEILINGS (WHERE PRESENT).
 - CONTROL WIRING SHALL BE INSTALLED IN SURFACE MOUNTED EMT CONDUIT SECURED WITH STRAPS.
 - PROVIDE LINESETS, INTERCONNECTING WIRING AND ADDITIONAL REFRIGERANT AS REQUIRED TO CONNECT AND OPERATE DAH & DHP UNITS.
 - INSULATE ALL SUCTION LINES. PAINT SUCTION LINE INSULATION EXPOSED TO EXTERIOR.
 - SECURE WALL MOUNTED UNITS TO WALL AND SEAL GAP AT WALL AROUND PERIMETER OF UNIT WITH CLEAR SEALANT.
 - FIELD VERIFY LOCATIONS OF EQUIPMENT TO INSURE NO INTERFERENCE WITH EXISTING LIGHTS, SPEAKERS, TECHNOLOGY OR OTHER DEVICES. SHIFT AS REQUIRED TO AVOID INTERFERENCES.
 - CHANGE AIR FILTERS AT PROJECT CLOSEOUT TO INSURE THAT CLEAN FILTERS ARE IN PLACE WHEN THE OWNER TAKES POSSESSION OF THE SYSTEMS.
 - WARRANTY ALL WORK AND MATERIALS FOR A MINIMUM OF ONE YEAR FROM THE DATE OF ACCEPTANCE BY THE OWNER. REFRIGERATION COMPRESSORS SHALL CARRY AN ADDITIONAL 9 YEARS PARTS ONLY WARRANTY.

SHEET INDEX			
SHEET	DESCRIPTION	REVISION	
		#	DATE
M1.1	MECHANICAL PLAN	00	05/04/20



TRIAD ENGINEERING CONSULTANTS, INC.
 2638 Willard Dairy Road
 Suite 100
 High Point, NC 27265
 Firm License #C-0492
 Phone: (336) 454-0225
 email: Admin@TriadEngMEP.com

© COPYRIGHT 2020
 NO PART OF THIS DRAWING IS TO BE REPRODUCED
 WITHOUT THE WRITTEN CONSENT OF
 ERIC SUTTON PENCE & ASSOCIATES, PA

310 East Sylvanwood Street, Suite A
 Cary, NC 27513
 Phone: 919.271.0300
 Fax: 919.271.1818
 www.ericpence.com

ESP/IA
 ARCHITECTS & PLANNERS
 inspire create transform

Renovations to Former Play Shelter
 GTCC Secondary Data Hub
 601 East Main Street
 Jamestown, NC 27282

By	Revision

PROJECT NUMBER
 2020-008
 DATE
 May 4, 2020

Sheet:
M1.1

Drawing Title: MECHANICAL PLAN