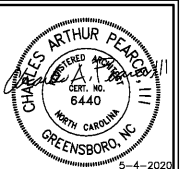


**ROOM FINISH SCHEDULE**

ROOM NO.	ROOM NAME	FLOOR	BASE	WALLS								CEILING		REMARKS	
				NORTH		EAST		SOUTH		WEST		MAT.	FIN.		
				MAT.	FIN.	MAT.	FIN.	MAT.	FIN.	MAT.	FIN.				
100	Tower Equipment	Existing Concrete	Rubber	Gypsum	Paint	Gypsum	Paint	Exist. CMU / WD	Paint	Gypsum	Paint	Gypsum	Paint	Varies	
101	Data Hub	Sealed Concrete	Rubber	Brick* / Wood	Paint	Gypsum	Paint	Brick* / Wood	Paint	Gypsum	Paint	Gypsum	Paint	Varies	Existing brick veneer not to be painted
102	Clean Agent Suppression	Existing Concrete	Rubber	Existing CMU	Paint	Gypsum	Paint	Gypsum	Paint	Gypsum	Paint	Gypsum	Paint	Varies	

**DOOR & FRAME SCHEDULE**

MARK	DOORS			FRAMES		ELEV.		HARDWARE SET	RATING	DETAILS			REMARKS
	SIZE	MATERIAL	FINISH	MATERIAL	FINISH	DOOR	FRAME			HEAD	JAMB	THRESHOLD	
101	3'-6" x 6'-8" x 1 3/4"	Fiberglass	Clear Anodized	Aluminum	Anodized	RFP-1	AL-1	1	--	1 / A6.1	2 / A6.1	Aluminum	



CHARLES ARTHUR PEARCE, ARCHITECT, INC. LIC. NO. 6440 GREENSBORO, NORTH CAROLINA



CHARLES ARTHUR PEARCE, ARCHITECTURAL CORPORATION LIC. NO. 50897 GREENSBORO, NORTH CAROLINA

NO PART OF THIS DRAWING MAY BE REPRODUCED WITHOUT THE WRITTEN CONSENT OF GREENSBORO PLANNING & ASSOCIATES, P.A.

310 East Business Street, Suite A  
Greensboro, NC 27401  
P: 336.273.0803  
F: 336.574.1916  
www.espia.com

**ESP/IA**  
ARCHITECTS & PLANNERS  
inspire create transform

Renovations to Former Play Shelter  
GTCC Secondary Data Hub  
601 East Main Street  
Jamestown, NC 27282

Drawing Title: Room Finish Schedule / Door Schedule / Door & Frame Type / Details

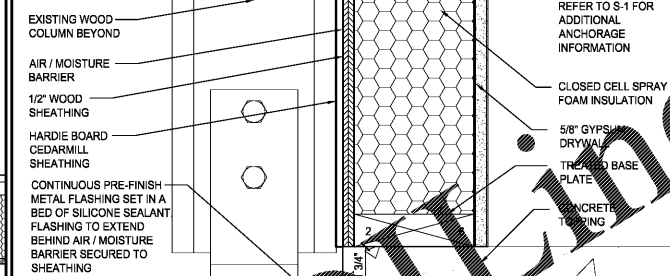
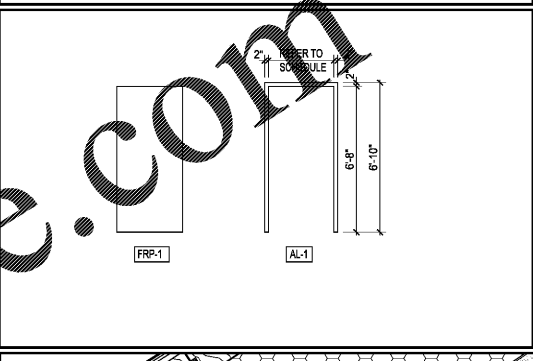
By	Revision

PROJECT NUMBER  
2020-008

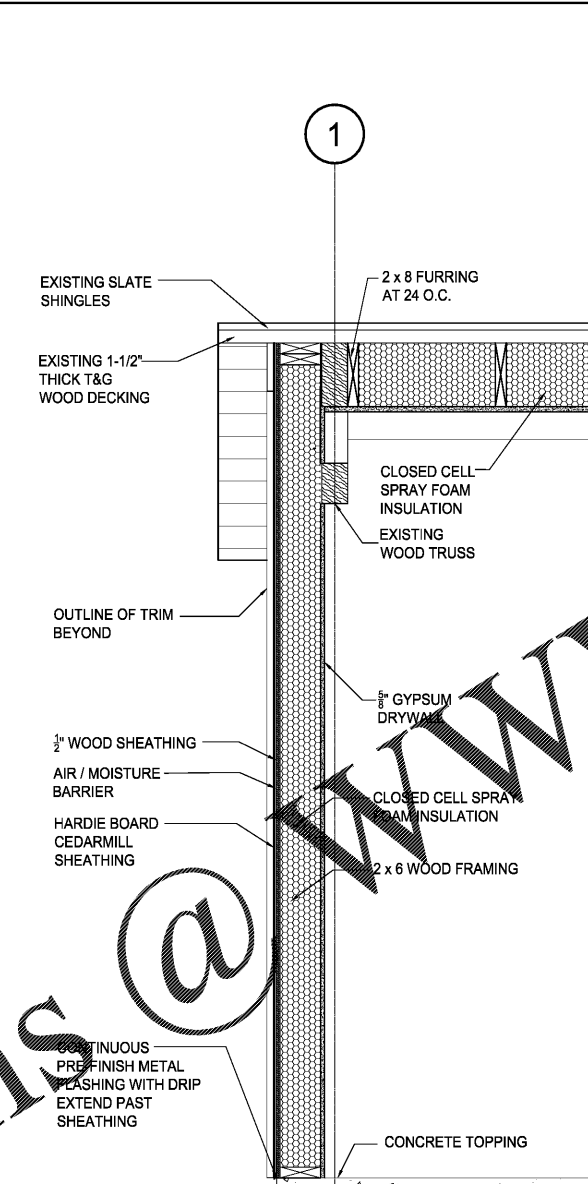
DATE  
May 4, 2020

Sheet:  
**A6.1**

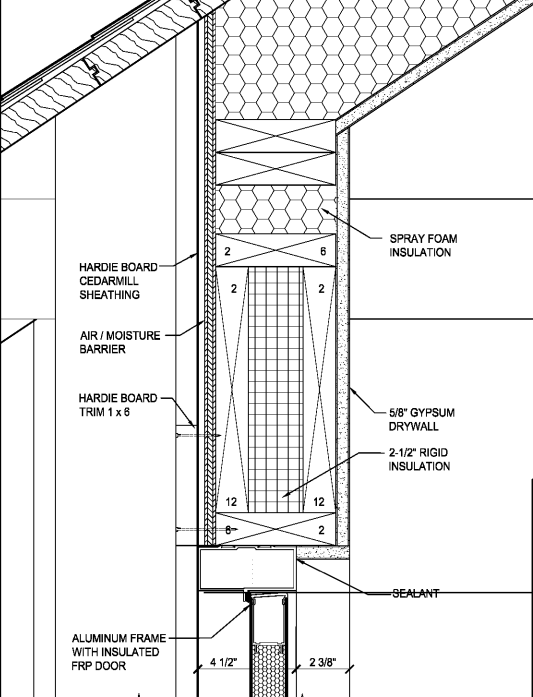
**DOOR AND FRAME TYPES 1/4" = 1'-0"**



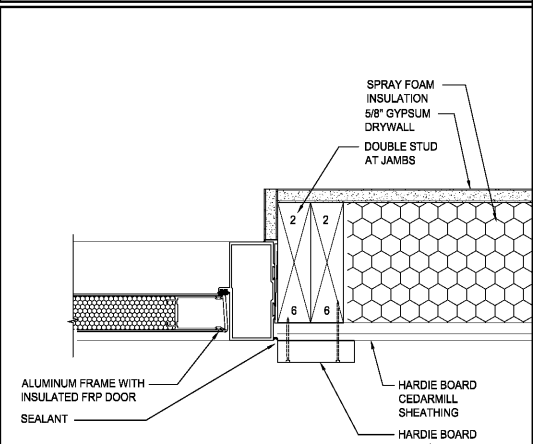
**3 Wall Base**  
3" = 1'-0" (1:4)



**4 Wall Section**  
1" = 1'-0" (1:12)



**1 Head**  
3" = 1'-0" (1:4)



**2 Jamb**  
3" = 1'-0" (1:4)

Order Plans @ [www.lidilme.com](http://www.lidilme.com)