

EXTERIOR LIGHT FIXTURE SCHEDULE												
ALL ITEMS LISTED ON THE "LIGHT FIXTURE SCHEDULE" WILL BE SUPPLIED BY THE OWNER (O'REILLY). ITEMS SHALL BE DIRECT ORDERED AND OR RELEASED FROM THE LISTED ELECTRICAL EQUIPMENT DISTRIBUTOR:												
GRAYBAR ELECTRIC CO. INC. 11885 LACKLAND ROAD ST. LOUIS, MO 63146												
GRAYBAR O'REILLY TEAM EMAIL: oreilly@graybar.com TOLL FREE: (314) 573-2080												
MARK	MFR.	CATALOG NUMBER	SUPPLY VOLTAGE	FINISH	MOUNTING			LAMPS		WATTAGE	NOTES	FIXTURE QUANTITY
					SURFACE WALL	SURF. CEILING	OTHER	FLOURESCENT	LED			
LED EXTERIOR LIGHTS												
WS1	LSI	XWM-FT-LED-08L-50-UE-BRZ NO SUBSTITUTIONS	120	DARK BRONZE	X			X	1	45	FULL CUT-OFF, BUG RATING B1-U0-G1. ARCHITECTURAL ELEVATIONS SHOW DIMENSIONED LOCATIONS.	8
LED POLE LIGHTS												
P1	LSI	MRM-LED-18L-SIL-FT-UNV-DM-50-80CRI-BRZ-IL SSQB3-S11G-25-S-BRZ-LAB-5BC	120	DARK BRONZE		X		X	1	150	25' POLE LENGTH, ADVANCE BALLASTS, FULL CUT-OFF, NO SUBSTITUTIONS, ANCHOR BOLTS W/HARDWARE & TEMPLATE. WITH INTERNAL LOUVER HOUSE SIDE SHIELD. BUG RATING B2-U0-G3	3

BACKLIGHT-UPLIGHT-GLARE (BUG) RATING / FULL CUTOFF

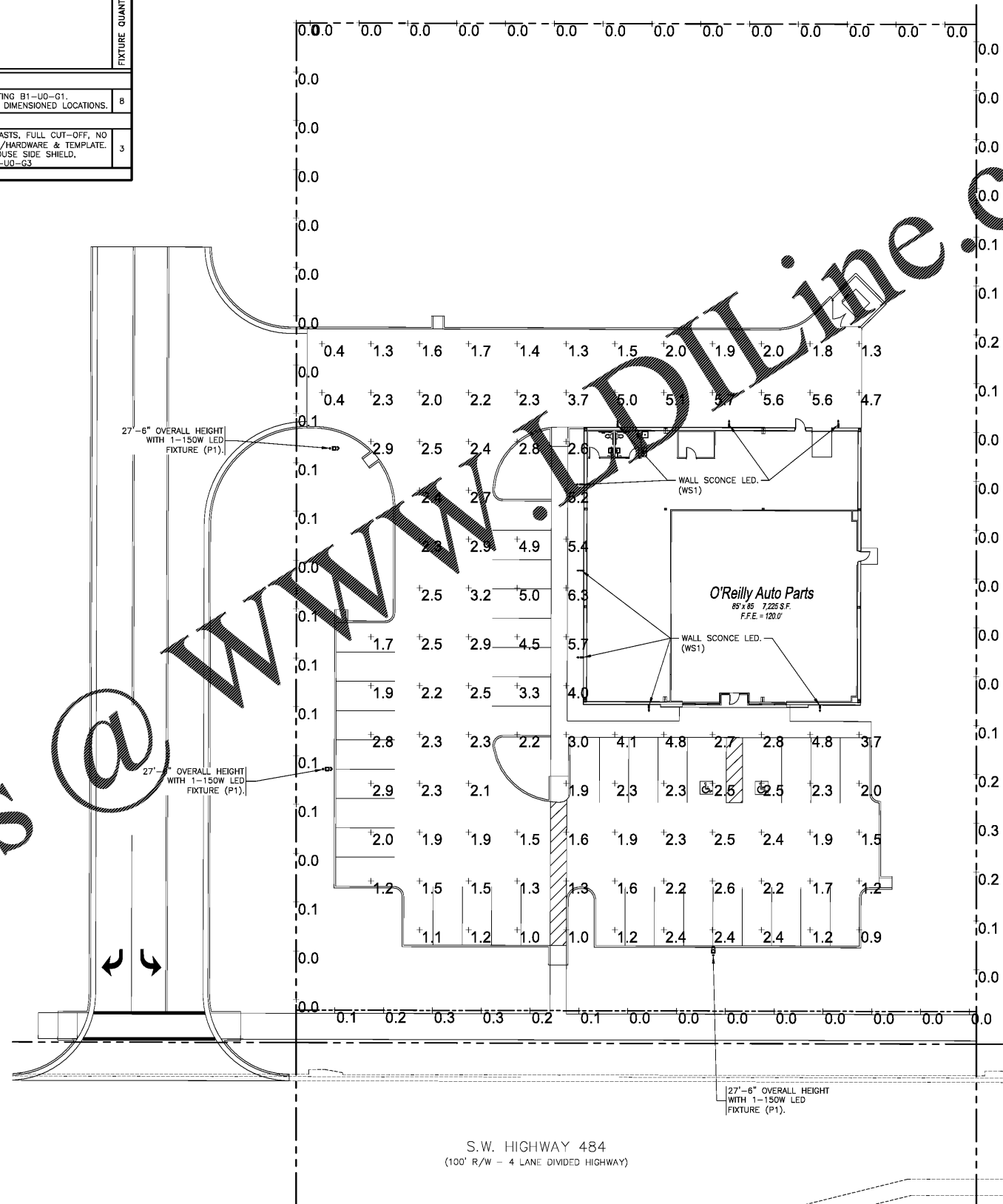
ALL "LSI MRM" & "XWM" LED FIXTURES HAVE ZERO UPLIGHT AND ARE CONSIDERED FULL CUT OFF AND DARKSKY COMPLIANT. THE DELIVERED LUMEN CHART BELOW APPLIES TO "LSI XWM" FIXTURES AND CONFIRMS THAT IN EVERY CONFIGURATION THE FIXTURE PRODUCES ZERO UPLIGHT (U = 0). BUG RATING CHART FOR "LSI MRM" FIXTURES IS FOUND ON CORRESPONDING "SP" SHEETS.

DELIVERED LUMENS*																
Luminaire Package	Discoloration	CRI	2700K		3000K		3500K		4000K		Wattage					
			Delivered Lumens	Efficiency	Delivered Lumens	Efficiency	Delivered Lumens	Efficiency	Delivered Lumens	Efficiency						
00L	2	79	2700	100	31-09-51	2522	125	31-09-51	2560	127	31-09-51	2560	127	31-09-51	22.6	
01L	3	79	2700	100	31-09-51	2679	127	31-09-51	2744	139	31-09-51	2744	139	31-09-51		
02L	4	79	2700	100	31-09-51	2836	128	31-09-51	3105	137	31-09-51	3105	137	31-09-51		
03L	2	79	3545	120	31-09-51	3702	125	31-09-51	4051	127	31-09-51	4051	127	31-09-51		
04L	3	79	3610	122	31-09-51	3789	128	31-09-51	4124	140	31-09-51	4124	140	31-09-51		
05L	FT	79	3985	121	31-09-51	3722	126	31-09-51	4073	138	31-09-51	4073	138	31-09-51		
06L	2	79	5074	116	31-09-51	5526	113	31-09-51	6076	136	31-09-51	6076	136	31-09-51		
07L	3	79	5362	123	31-09-51	5826	125	31-09-51	6194	137	31-09-51	6194	137	31-09-51		
08L	FT	79	5932	119	31-09-51	6526	124	31-09-51	6928	139	31-09-51	6928	139	31-09-51		
09L	2	79	6956	119	31-09-51	7364	118	31-09-51	7969	129	31-09-51	7969	129	31-09-51		
10L	3	79	7328	119	31-09-51	7457	120	31-09-51	8138	131	31-09-51	8138	131	31-09-51		
11L	FT	79	7993	119	31-09-51	7335	119	31-09-51	8077	130	31-09-51	8077	130	31-09-51		
12L	2	79	10516	103	31-09-51	10979	102	31-09-51	12014	118	31-09-51	12014	118	31-09-51		
13L	3	79	10987	105	31-09-51	11178	109	31-09-51	12252	129	31-09-51	12252	129	31-09-51		
14L	FT	79	12674	103	31-09-51	11636	103	31-09-51	12580	118	31-09-51	12580	118	31-09-51		

AUTOMATIC LIGHTING CONTROL

- COMPLIANCE WITH ENERGY CODE IS ACHIEVED BY:
- ONCE THE EMS HAS BEEN PROGRAMMED, THE INTERIOR AND EXTERIOR LIGHTS WILL TURN ON AND OFF USING THE FOLLOWING LOGIC: SEE EM SHEETS.
 - INTERIOR WORK LIGHTS WILL TURN ON WITH FIRST MOTION IN THE STORE AND WILL TURN OFF 15 MINUTES AFTER LAST MOTION ONCE THE STORE IS CLOSED.
 - INTERIOR SALES LIGHTS WILL TURN ON AT STORE OPENING AND TURN OFF 15 MINUTES AFTER STORE CLOSING.
 - EXTERIOR SIGN LIGHTS WILL TURN ON WHEN ITS DARK ENOUGH OUTSIDE ANYTIME DURING STORE HOURS, AND WILL TURN OFF AT STORE CLOSING.
 - EXTERIOR SITE LIGHTS WILL TURN ON WHEN IT IS DARK ENOUGH OUTSIDE AND IT IS WITHIN STORE HOURS OR THERE IS MOTION IN THE STORE. THEY WILL TURN OFF 30 MINUTES AFTER LAST MOTION ONCE THE STORE IS CLOSED.
 - RESTROOMS AND OFFICES: ALL LIGHTING IN THESE AREAS ARE CONTROLLED BY OCCUPANT-SENSING DEVICES.

Order Plans

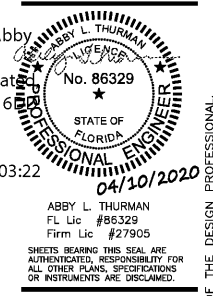


SITE LIGHTING PHOTOMETRICS

SCALE: 1/8" = 1'-0"



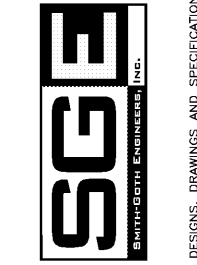
Abby L Thurman
Digitally signed by Abby L Thurman
DN: c=US, o=Unaffiliated, ou=A01410D0000016, 534378000003578, cn=Abby L Thurman
Date: 2020.04.21 10:03:22 -05'00'



O'Reilly AUTO PARTS
CORPORATE OFFICES
233 SOUTH PATTERSON
SPRINGFIELD, MISSOURI 65802
(417) 862-2674 TELEPHONE

PROJECT:
NEW O'REILLY AUTO PARTS STORE
2425 COUNTY HIGHWAY 484
OCALA, FLORIDA
SITE LIGHTING PHOTOMETRICS

3885 S. JEFFERSON AVE.
SPRINGFIELD, MO 65807
P: 417-882-2320
F: 417-882-1188
WWW.O'REILLY.COM



DRAWN BY: WNB
CHECKED BY: ALT/BLC
DATE: 04/01/2020
REVISION:

PROJECT NUMBER: OF7

SHEET NUMBER: SP1

DESIGNS, DRAWINGS AND SPECIFICATIONS ARE INSTRUMENTS OF SERVICE AND ARE THE PROPERTY OF THE DESIGN PROFESSIONAL. REPRODUCTION PROHIBITED WITHOUT THE EXPRESSED WRITTEN CONSENT OF THE DESIGN PROFESSIONAL. © COPYRIGHT 2020-2021