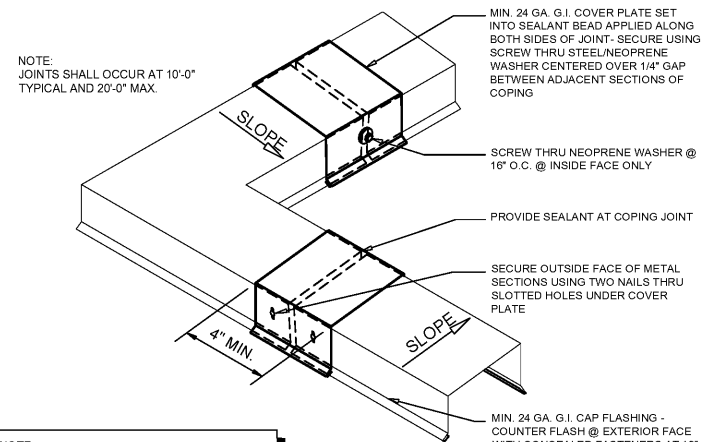


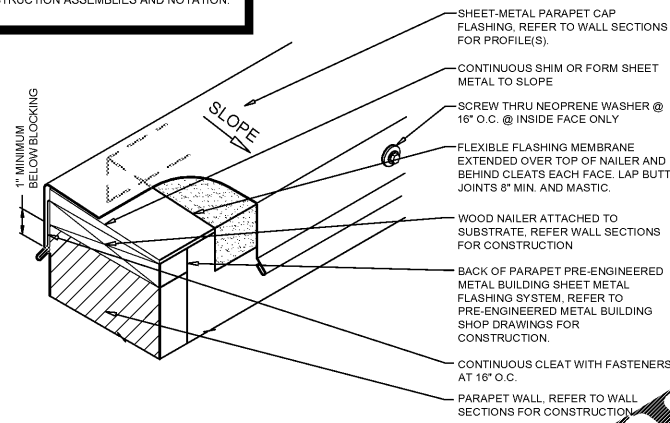
Order Plans @ www.LDILine.com

1 (NOT USED)
A6.1 SCALE: N.T.S.

2 TYPICAL COPING FLASHING DETAIL
A6.1 SCALE: N.T.S.



NOTE:
REFER TO SECTIONS AND DETAILS FOR WALL
CONSTRUCTION ASSEMBLIES AND NOTATION.



- MIN. 24 GA. G.I. COVER PLATE SET INTO SEALANT BEAD APPLIED ALONG BOTH SIDES OF JOINT- SECURE USING SCREW THRU STEEL/NEOPRENE WASHER CENTERED OVER 1/4" GAP BETWEEN ADJACENT SECTIONS OF COPING.
- SCREW THRU NEOPRENE WASHER @ 16" O.C. @ INSIDE FACE ONLY
- PROVIDE SEALANT AT COPING JOINT
- SECURE OUTSIDE FACE OF METAL SECTIONS USING TWO NAILS THRU SLOTTED HOLES UNDER COVER PLATE
- MIN. 24 GA. G.I. CAP FLASHING - COUNTER FLASH @ EXTERIOR FACE WITH CONCEALED FASTENERS AT 16" O.C.
- SHEET-METAL PARAPET CAP FLASHING. REFER TO WALL SECTIONS FOR PROFILE(S).
- CONTINUOUS SHIM OR FORM SHEET METAL TO SLOPE
- SCREW THRU NEOPRENE WASHER @ 16" O.C. @ INSIDE FACE ONLY
- FLEXIBLE FLASHING MEMBRANE EXTENDED OVER TOP OF NAILER AND BEHIND CLEATS EACH FACE. LAP BUTT JOINTS 8" MIN. AND MASTIC.
- WOOD NAILER ATTACHED TO SUBSTRATE. REFER WALL SECTIONS FOR CONSTRUCTION
- BACK OF PARAPET PRE-ENGINEERED METAL BUILDING SHEET METAL FLASHING SYSTEM. REFER TO PRE-ENGINEERED METAL BUILDING SHOP DRAWINGS FOR CONSTRUCTION.
- CONTINUOUS CLEAT WITH FASTENERS AT 16" O.C.
- PARAPET WALL. REFER TO WALL SECTIONS FOR CONSTRUCTION

GENERAL NOTES

REFER TO PROJECT MANUAL AND SCOPE OF WORK SCHEDULE FOR ADDITIONAL REQUIREMENTS.

SHEET METAL AND ROOFING CONSTRUCTION SHALL COMPLY WITH NATIONAL ROOFING CONTRACTORS ASSOCIATION (NRCA) AND SHEET METAL AND AIR CONDITIONING CONTRACTORS NATIONAL ASSOCIATION (SMACNA) DESIGN STANDARDS AND RECOMMENDATIONS.

INDIVIDUAL ARCHITECTURAL
REGISTRATION NO.: A0017836

Date: 2020.04.20
20:28:53 -05'00"
Adobe Acrobat
version:
2019.012.20040

SHEETS BEARING THIS SEAL ARE AUTHENTICATED. RESPONSIBILITY FOR ALL OTHER PLANS, SPECIFICATIONS OR INSTRUMENTS ARE DISCLAIMED.

O'Reilly AUTO PARTS
CORPORATE OFFICES
283 SOUTH PATTERSON
SPRINGFIELD, MISSOURI 65802
(417) 862-2674 TELEPHONE

PROJECT:
NEW O'REILLY AUTO PARTS STORE
2425 COUNTY HIGHWAY 484
OCALA, FLORIDA

EXTERIOR DETAILS

Buddy Webb, NCARB, AIA
Architect - Consultant
3057 EAST CAIRO
SPRINGFIELD, MISSOURI 65802
(417) 877-1385 TELEPHONE
(417) 877-9736 FAX

DRAWN BY: RJD
CHECKED BY: SB
DATE: 04/01/20
REVISION:
PROJECT NUMBER: OF7
SHEET NUMBER

A6.1

© COPYRIGHT 2020 - DESIGNS, DRAWINGS AND SPECIFICATIONS ARE INSTRUMENTS OF SERVICE AND ARE THE PROPERTY OF THE DESIGN PROFESSIONAL. REPRODUCTION PROHIBITED WITHOUT THE EXPRESSED WRITTEN CONSENT OF THE DESIGN PROFESSIONAL.