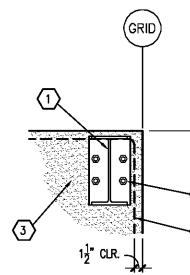
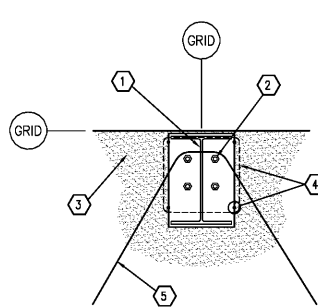


NOTE: GENERAL CONTRACTOR PROVIDED ANCHOR BOLT ASSEMBLY TO BE PLACED IN FORM PRIOR TO POURING CONCRETE. BOLT MATERIAL MAY BE F1554 GR. 36, OR CONTINUOUSLY THREADED A36 ROD. ALL ANCHOR BOLTS SHALL BE CLEAN AND FREE OF ALL OIL, GREASE, ICE, ETC.

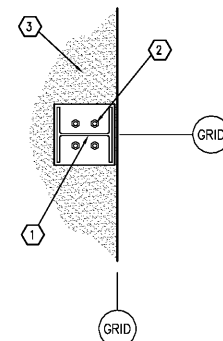
**1 ANCHOR ASSEMBLY**  
S3.2 SCALE: NONE



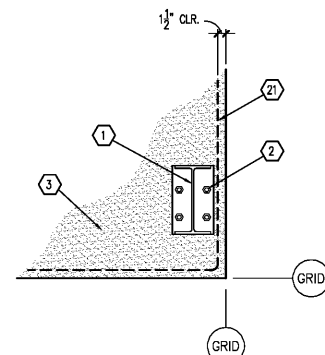
**2 DETAIL**  
S3.2 SCALE: 3/4\"/>



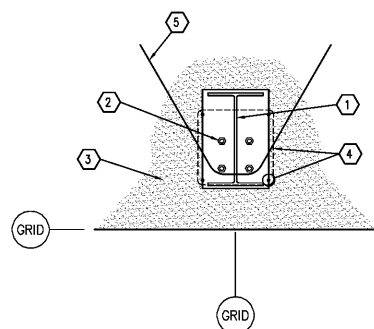
**3 DETAIL**  
S3.2 SCALE: 3/4\"/>



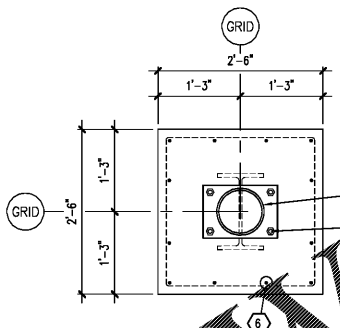
**4 DETAIL**  
S3.2 SCALE: 3/4\"/>



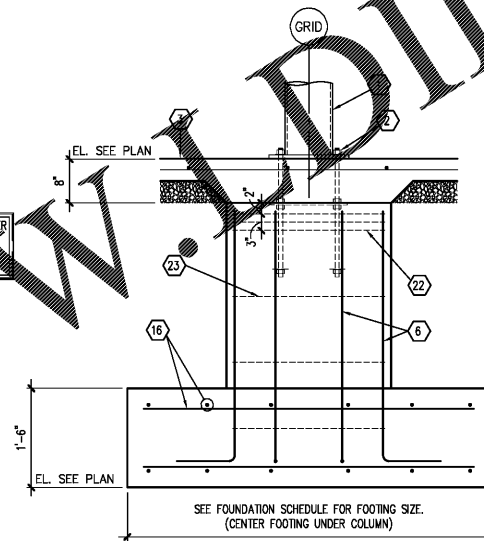
**5 DETAIL**  
S3.2 SCALE: 3/4\"/>



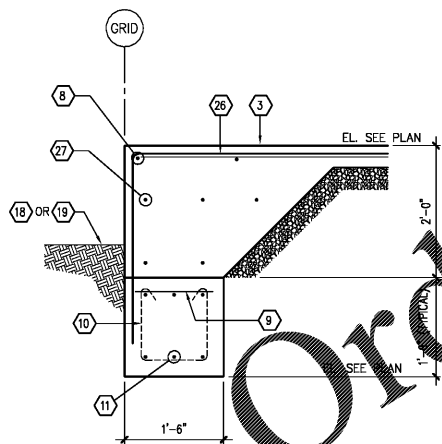
**6 DETAIL**  
S3.2 SCALE: 3/4\"/>



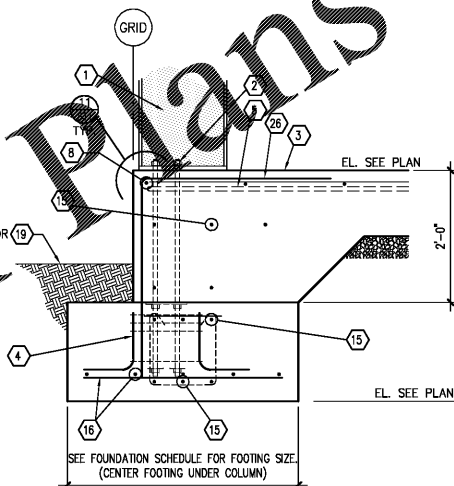
**7 DETAIL**  
S3.2 SCALE: 3/4\"/>



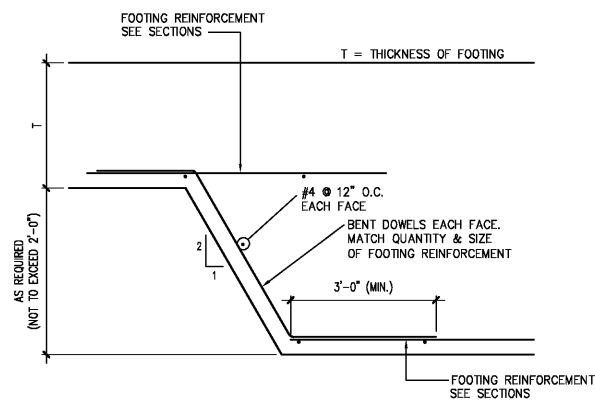
**8 SECTION**  
S3.2 SCALE: 3/4\"/>



**9 SECTION**  
S3.2 SCALE: 3/4\"/>



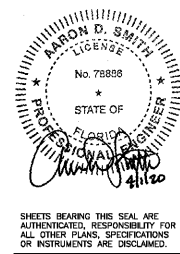
**10 SECTION**  
S3.1 SCALE: 3/4\"/>



**11 TYPICAL STEPPED FOOTING**  
S3.2 SCALE: NONE (IF REQUIRED BY FIELD CONDITIONS)

**KEYNOTES**

- 1 PRE-ENGINEERED METAL BUILDING STRUCTURAL SYSTEM. SEE P.E.M.B. SHOP DRAWINGS FOR ADDITIONAL INFORMATION.
- 2 ANCHOR BOLTS. SEE FOUNDATION DETAILS AND PRE-ENGINEERED METAL BUILDING DRAWINGS FOR SIZE, QUANTITY AND PLAN LOCATION. SEE 1/S3.2 FOR TYPICAL SHOP FABRICATED ANCHOR ASSEMBLY.
- 3 INTERIOR CONCRETE SLAB SEE FOUNDATION PLAN.
- 4 SEE DETAIL 12/S3.1 FOR VERTICAL ANCHOR BOLT CONFINEMENT REINFORCEMENT
- 5 SLAB HAIRPIN - SEE DETAIL 9/S3.1
- 6 SEE FOUNDATION SCHEDULE FOR PILASTER REINFORCEMENT.
- 7 #3x5'-0" DOWEL @ 36" O.C. FIELD BEND AS SHOWN 24"
- 8 #4 CONTINUOUS (PROVIDE BENT BARS AT SLAB CORNERS)
- 9 #3 DOWELS @ 48" O.C.
- 10 #3 STIRRUPS @ 48" O.C.
- 11 (3) #4s CONTINUOUS TOP & BOTTOM.
- 12 EXTERIOR CONCRETE SLAB OR SIDEWALK SEE FOUNDATION PLAN.
- 13 AT EXTERIOR DECK LOCATIONS DRILL 6" DEEP HOLES FOR #4x1'-6" DOWELS @ 36" O.C. AND ADHERE TO PLACE. SEE ADHESIVE ANCHOR SYSTEM NOTES SHEET S1 FOR INSTALLATION
- 14 ISOLATION JOINT WITH ASPHALTIC FILLER & SEALANT
- 15 CONTINUOUS FOOTING REINFORCEMENT TO RUN THROUGH COLUMN FOUNDATIONS. SEE SECTION 1/S3.1 FOR REINFORCEMENT INFORMATION.
- 16 COLUMN FOOTING REINFORCEMENT-SEE FOUNDATION SCHEDULE.
- 17 CONTINUOUS FOOTING BEYOND
- 18 PAVING, SEE SITE DEVELOPMENT DRAWINGS FOR ADDITIONAL INFORMATION.
- 19 SEE GRADING PLAN FOR FINISHED GRADES.
- 20 STEEL BOLLARD SEE SITE PLAN.
- 21 #4 CORNER REINFORCEMENT CENTERED IN SLAB. 36"
- 22 (3) #3 TIES @ 12" O.C.
- 23 #3 TIES @ 12" O.C.
- 24 ADDITIONAL #4 CONTINUOUS AT TOP AND BOTTOM.
- 25 #3 @ 18" TOP AND BOTTOM.
- 26 #3x6'-0" DOWEL @ 36" O.C. FIELD BEND AS SHOWN 36"
- 27 (5) ADDITIONAL #4s AT THICKENED SLAB



**O'Reilly AUTO PARTS**  
CORPORATE OFFICES  
233 SOUTH PATTERSON  
SPRINGFIELD, MISSOURI 65802  
(417) 862-2674 TELEPHONE

PROJECT:  
**NEW O'REILLY AUTO PARTS STORE**  
2425 COUNTY HIGHWAY 484  
OCALA, FLORIDA  
**FOUNDATION DETAILS**

JS Smith Consulting Engineers, P.C.  
1801 W. 32nd St. Bldg B, Ste 104 - JOPLIN, MISSOURI 64804  
PHONE: 417-862-6444 FAX: 417-862-6430

DRAWN BY: **KW** CHECKED BY: **AS**  
DATE: **04/01/20**  
REVISION:  
PROJECT NUMBER:  
**OF7**

SHEET NUMBER  
**S3.2**

Order Plans @ [www.dilling.com](http://www.dilling.com)

DESIGNS, DRAWINGS AND SPECIFICATIONS ARE INSTRUMENTS OF SERVICE AND ARE THE PROPERTY OF THE DESIGN PROFESSIONAL. REPRODUCTION WITHOUT THE EXPRESSED WRITTEN CONSENT OF THE DESIGN PROFESSIONAL. COPYRIGHT 2020