



ARON D. SMITH  
LICENSE  
No. 78886  
STATE OF MISSOURI  
PROFESSIONAL ENGINEER

**O'Reilly AUTO PARTS**  
CORPORATE OFFICES  
233 SOUTH PATTERSON  
SPRINGFIELD, MISSOURI 65802  
(417) 862-2674 TELEPHONE

PROJECT:  
**NEW O'REILLY AUTO PARTS STORE**  
2425 COUNTY HIGHWAY 484  
OCALA, FLORIDA

JS Smith Consulting Engineers, P.C.  
1801 W. 32nd St. Bldg B, Ste 104 - JOPLIN, MISSOURI 64804  
PHONE: 417-862-0444 FAX: 417-862-9430



DRAWN BY: **KW** CHECKED BY: **AS**  
DATE: **04/01/20**  
REVISION:  
PROJECT NUMBER:  
**OF7**  
SHEET NUMBER

**S2**

DESIGNS, DRAWINGS AND SPECIFICATIONS ARE INSTRUMENTS OF SERVICE AND ARE THE PROPERTY OF THE DESIGN PROFESSIONAL. REPRODUCTION WITHOUT THE EXPRESSED WRITTEN CONSENT OF THE DESIGN PROFESSIONAL. COPYRIGHT 2020

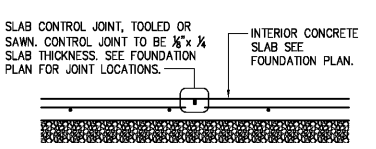
### KEYNOTES

- 1 SLAB HARPIN. SEE DETAIL 9/S3.1
- 2 PROVIDE #4x4'-0" DWEL. TURN 45 DEGREES AT SLAB INSIDE CORNERS
- 3 CONTROL OR CONSTRUCTION JOINT SEE DETAILS 1 & 2/S2
- 4 SIDEWALK: PROVIDE 4" THICK CONCRETE REINFORCED W/ #3'S @ 18" O.C. EACH WAY (PLACED AT MID-HEIGHT OF SLAB) OVER COMPACTED SUB-BASE MATERIAL (AS DIRECTED BY THE GEOTECHNICAL REPORT OR ONSITE GEOTECHNICAL ENGINEER) OVER PROPERLY PREPARED SUBGRADE. SEE CIVIL DRAWINGS FOR JOINT REQUIREMENTS, EXTENTS OF FLATWORK, DETECTABLE WARNING SURFACE (IF REQUIRED), AND TOP OF CONCRETE SPOT ELEVATIONS.
- 5 STEEL BOLLARD: SEE SITE DEVELOPMENT PLANS AND DETAILS. (WHERE APPLICABLE, ALIGN WITH STOREFRONT MULLIONS AND JAMBS OF OVERHEAD DOOR).
- 6 4'x4' (MIN.) DOORPAD: PROVIDE 4" THICK CONCRETE REINFORCED W/ #3'S @ 18" O.C. EACH WAY (PLACED AT MID-HEIGHT OF SLAB) OVER COMPACTED SUB-BASE MATERIAL (AS DIRECTED BY THE GEOTECHNICAL REPORT OR ONSITE GEOTECHNICAL ENGINEER) ON PROPERLY PREPARED SUBGRADE. CENTER PAD OF DOOR. SEE CIVIL DRAWINGS FOR TOP OF CONCRETE SPOT ELEVATIONS.
- 7 6" WIDE DOORPAD: PROVIDE 4" THICK CONCRETE REINFORCED W/ #3'S @ 18" O.C. EACH WAY (PLACED AT MID-HEIGHT OF SLAB) OVER COMPACTED SUB-BASE MATERIAL (AS DIRECTED BY THE GEOTECHNICAL REPORT OR ONSITE GEOTECHNICAL ENGINEER) ON PROPERLY PREPARED SUBGRADE. EXTEND CONCRETE 1'-6" PAST DOOR JAMBS. SEE CIVIL DRAWINGS FOR TOP OF CONCRETE SPOT ELEVATIONS.
- 8 ISOLATION JOINT. SEE DETAIL 3/S2 (SPACING NOT TO EXCEED 30'-0" O.C.)
- 9 STEPPED FOOTINGS, SEE DETAIL 11/S3.2

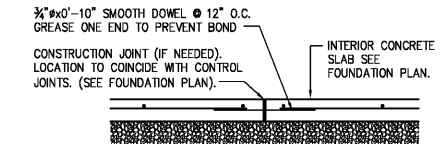
### FOUNDATION SCHEDULE

MARK	FOOTING SIZE (W x L)	FOOTING REINFORCEMENT (LONG. TRANS.)	BOTTOM OF FOOTING ELEVATION	PILASTER SIZE	PILASTER REINFORCEMENT (VERT. TIES)	TOP OF PILASTER ELEVATION	MARK
F1	3'-0"x3'-0"x1'-6"	(4) #5's (4) #5's	97'-6"	-----	-----	-----	F1
F2	3'-6"x3'-6"x1'-6"	(5) #5's (5) #5's	97'-6"	-----	-----	-----	F2
F3	5'-6"x3'-0"x1'-6"	(6) # EACH WAY TOP & BOT.	96'-0"	SEE 7/S3.2	(12) #6 SEE 8/S3.2	99'-4"	F3
F4	3'-6"x3'-0"x1'-6"	(4) #5's (4) #5's	97'-6"	-----	-----	-----	F4
F5	3'-0"x3'-0"x1'-6"	(4) #5's (4) #5's	97'-6"	-----	-----	-----	F5
F6	3'-6"x3'-6"x1'-6"	(5) #5's (5) #5's	97'-6"	-----	-----	-----	F6
F7	3'-0"x3'-0"x1'-6"	(4) #5's (4) #5's	96'-6"	-----	-----	-----	F7
F8	3'-0"x3'-0"x1'-6"	(4) #5's (4) #5's	96'-6"	-----	-----	-----	F8

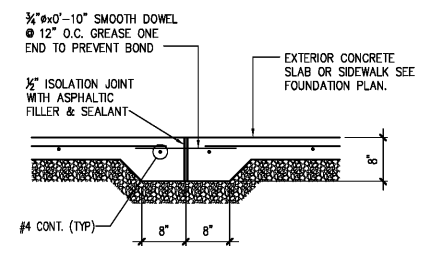
NOTES:  
1. ALL ANCHOR BOLTS SHALL BE SIZE, QUANTITY AND SPACING AS SPECIFIED BY THE PRE-ENGINEERED METAL BUILDING MANUFACTURER. MAINTAIN 3" MINIMUM CONCRETE COVER AROUND BOLTS. TIES SHALL WRAP AROUND ANCHOR BOLTS.  
2. COLUMN BASE PLATES ARE TO REST ON TOP OF SLAB. PROVIDE LEVEL BEARING SURFACE FOR EVEN CONTACT.  
3. COLUMN FOOTING REINFORCEMENT TO BE INTEGRAL WITH CONTINUOUS FOUNDATION REINFORCEMENT (WHERE APPLICABLE).  
4. ALL SPREAD FOOTINGS ARE TO BE CENTERED BENEATH COLUMNS UNLESS NOTED OTHERWISE.  
5. PROVIDE ANCHOR BOLT TEMPLATES AT COLUMN.



**1 TYP. CONTROL JOINT DETAIL**  
SCALE: 3/4" = 1'-0"

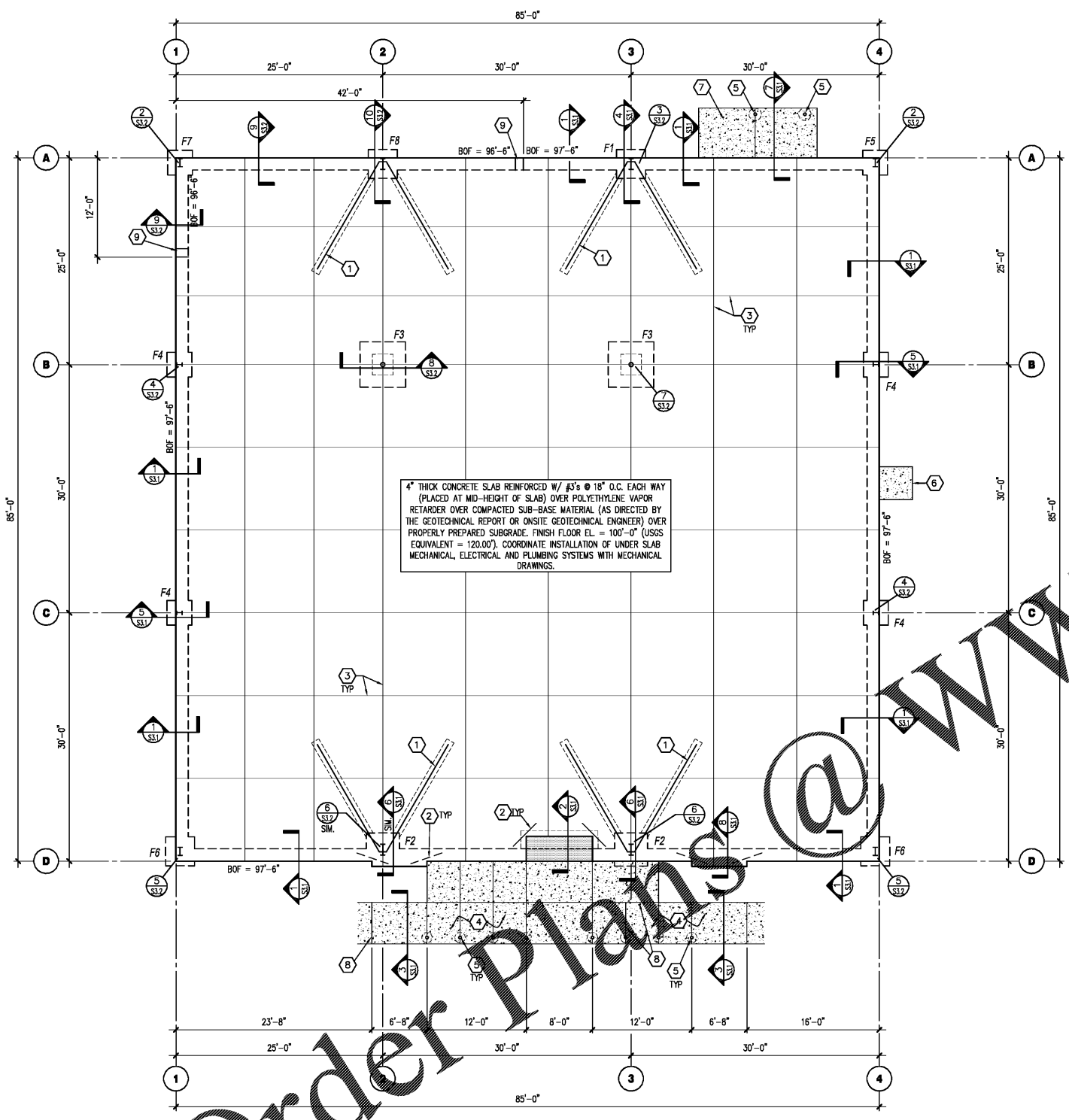


**2 TYP. CONSTR. JOINT DETAIL**  
SCALE: 3/4" = 1'-0"



**3 TYP. SIDEWALK ISOLATION JOINT**  
SCALE: 3/4" = 1'-0"

TERMITE PROTECTION OF SOILS:  
TERMITE PROTECTION SHALL BE PROVIDED AS DEFINED IN SECTION 1816 OF THE 2014 FLORIDA BUILDING CODE. TERMITE TREATMENT SHALL BE PERFORMED AFTER ALL EXCAVATIONS, BACKFILLING AND COMPACTION IS COMPLETED, INCLUDING AREAS OF EXTERIOR CONCRETE OR GRADE WITHIN 1 FOOT OF THE PRIMARY STRUCTURE. RETREATMENT OF SOILS MAY BE REQUIRED IF ANY TREATED SOILS ARE DISTURBED DURING THE CONSTRUCTION PROCESS. ALL TREATED SOILS ARE TO BE PROTECTED FROM RAINFALL DILUTION. REFER TO PROJECT MANUAL FOR ADDITIONAL INFORMATION.  
PER THE PEMB DRAWINGS THE ROOF STRUCTURE IS COMPRISED OF STEEL FRAMES AND PURLINS. THEREFORE LIGHT-FRAME TRUSS CONSTRUCTION SIGNS ARE NOT REQUIRED.



**FOUNDATION PLAN**  
SCALE: 1/8" = 1'-0"

PRE-ENGINEERED METAL BUILDING JAMB POSTS AND SECONDARY POSTS NOT SHOWN. SEE PRE-ENGINEERED METAL BUILDING DRAWINGS FOR ADDITIONAL POST LOCATIONS. REFER TO DETAIL 1/S3.2 (SIM) FOR ANCHORAGE.

Order Plans @ WWW.WWW