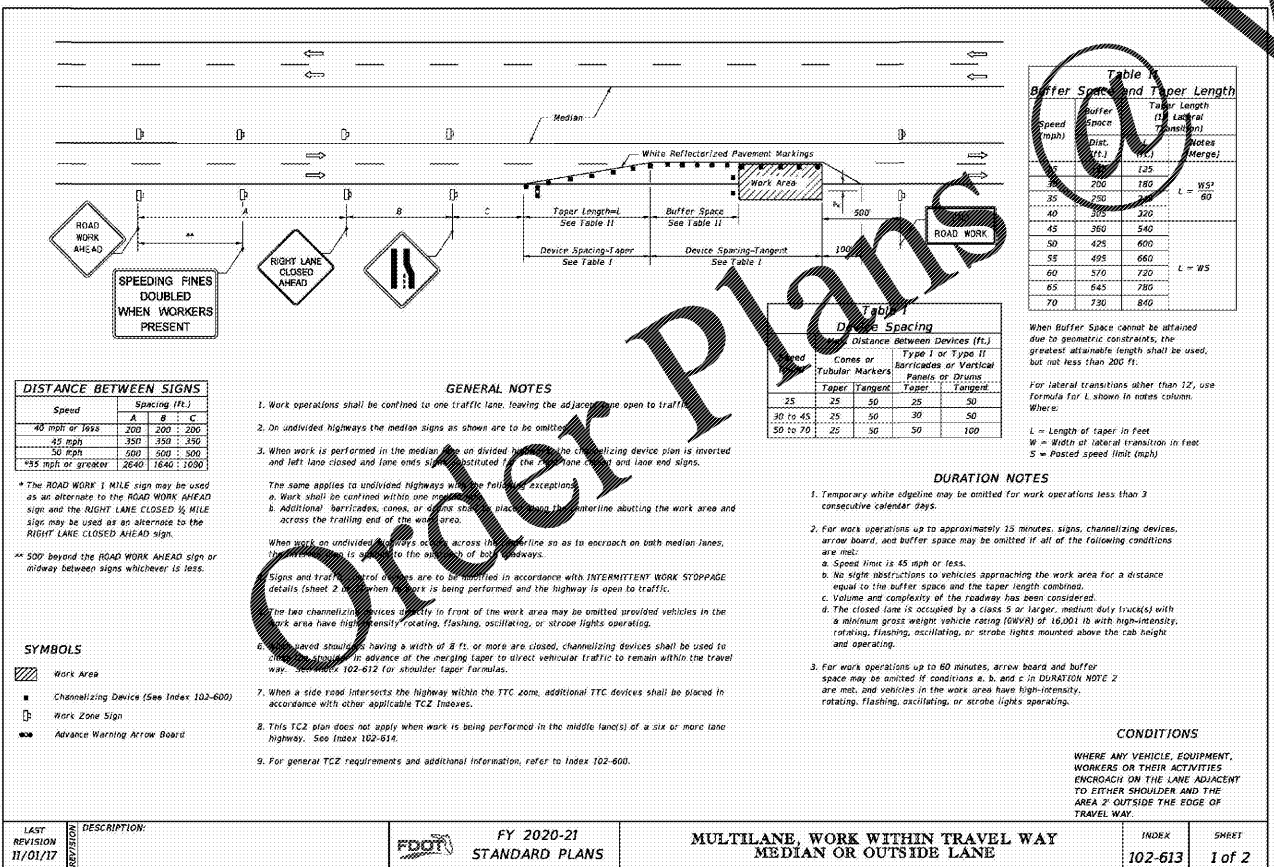
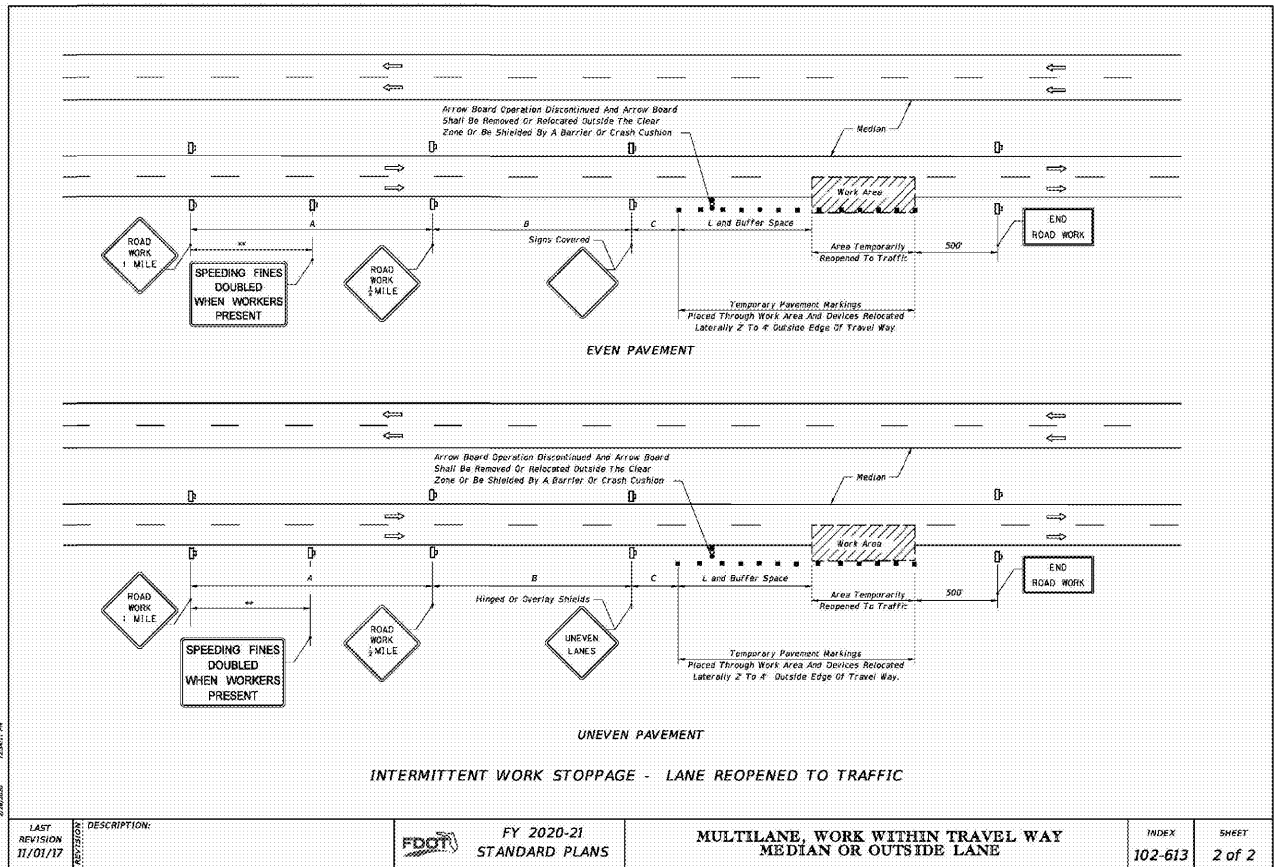


INDEX 102-612 SHEET 1 of 1



INDEX 102-613 SHEET 1 of 2



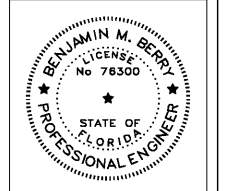
INDEX 102-613 SHEET 2 of 2

WWW.LDILine.com

BERRY ENGINEERS LLC
355 KEITH ST NW, SUITE 109
CLEVELAND, TN 37312
TEL: (627) 790-5880
CERTIFICATE OF AUTHORIZATION #0889

DEVELOPER:
BELTERRA PARTNERS
728 SHADES CREEK PKWY
SUITE 130
BIRMINGHAM, AL 35209

PROJECT:
MAJOR SITE PLAN
O'REILLY AUTO PARTS
SW HWY 484
MARION COUNTY, FL



BENJAMIN M. BERRY, STATE OF FLORIDA
PROFESSIONAL ENGINEER, LICENSE NO. 76300
THIS ITEM HAS BEEN ELECTRONICALLY
SIGNED AND SEALED BY BENJAMIN M. BERRY,
PE ON DATE AND/OR TIME STAMP SHOWN
USING A DIGITAL SIGNATURE.
PRINTED COPIES OF THIS DOCUMENT ARE NOT
CONSIDERED SIGNED AND SEALED AND THE
SIGNATURE MUST BE VERIFIED ON ANY
ELECTRONIC COPIES.

REVISIONS

NO.	DATE	DESCRIPTION
1		
2		
3		
4		
5		

SHEET NAME:
SITE DETAILS

DATE: 05/04/2020
DRAWN BY: BMB
CHECKED BY: CMB
PROJECT NO: 19078
SHEET NUMBER:
C-10