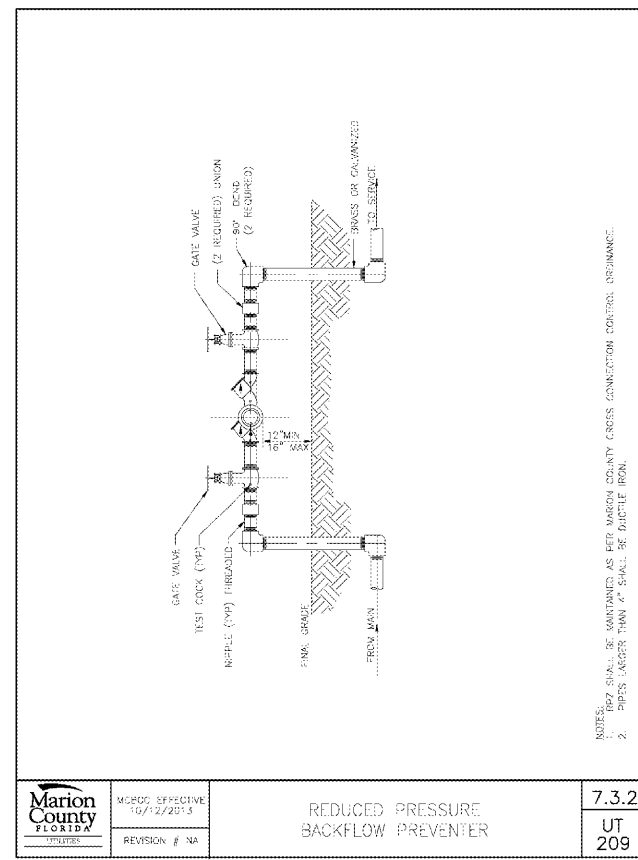
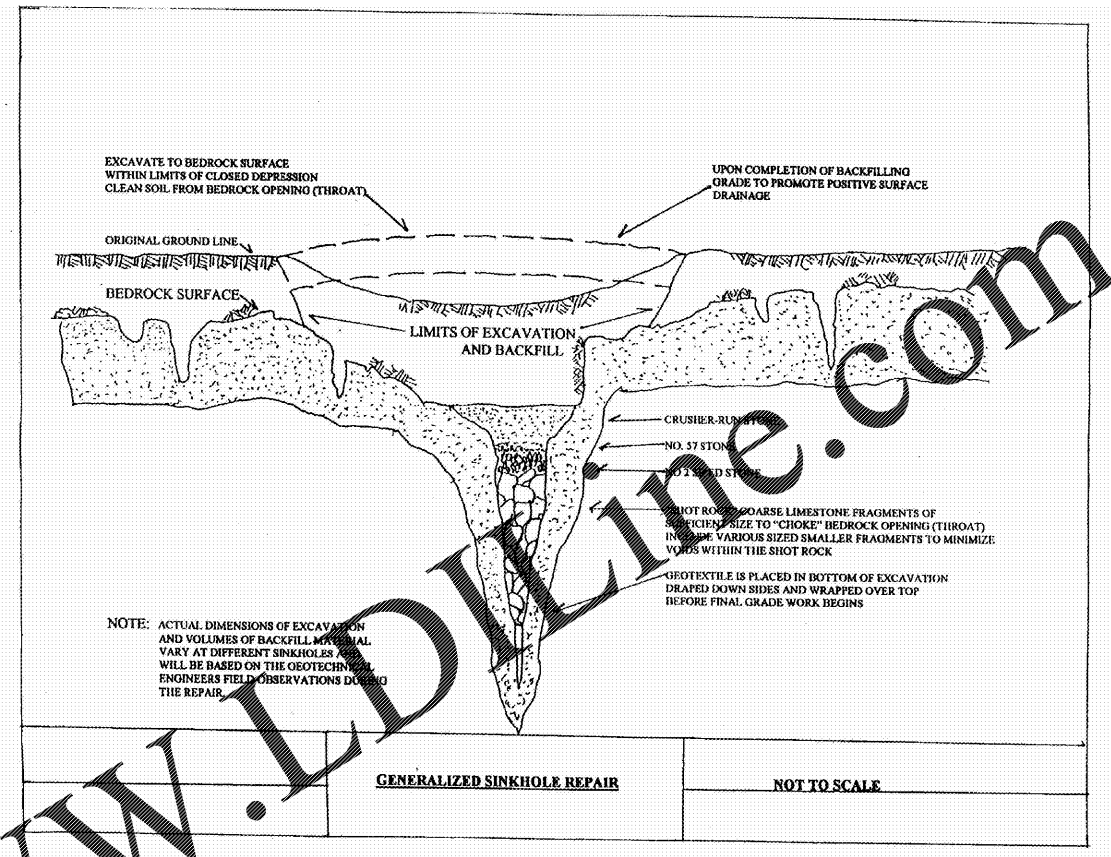


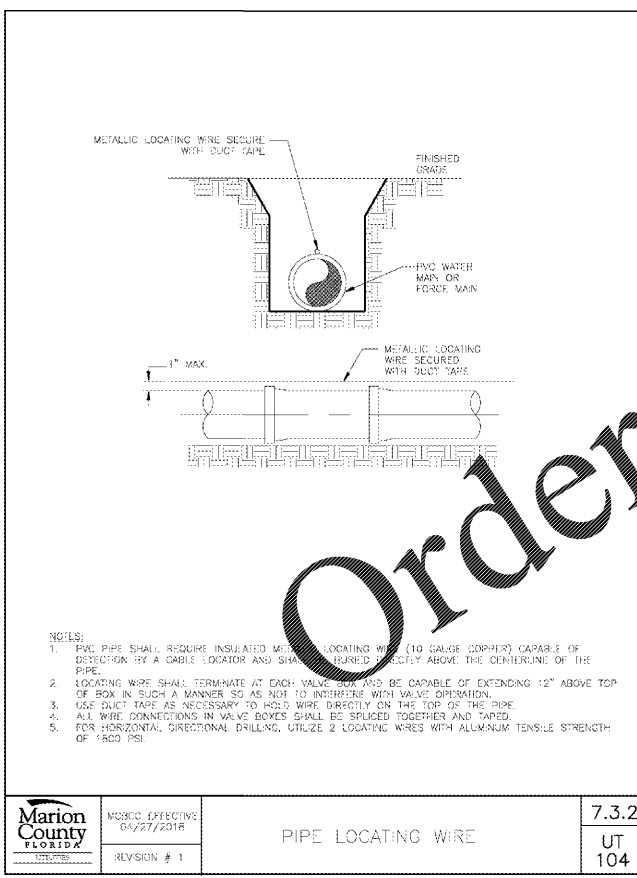
Marion County FLORIDA	MISC. EFFECTIVE 04/21/2018	7.3.2
	REVISION # 1	UT 103



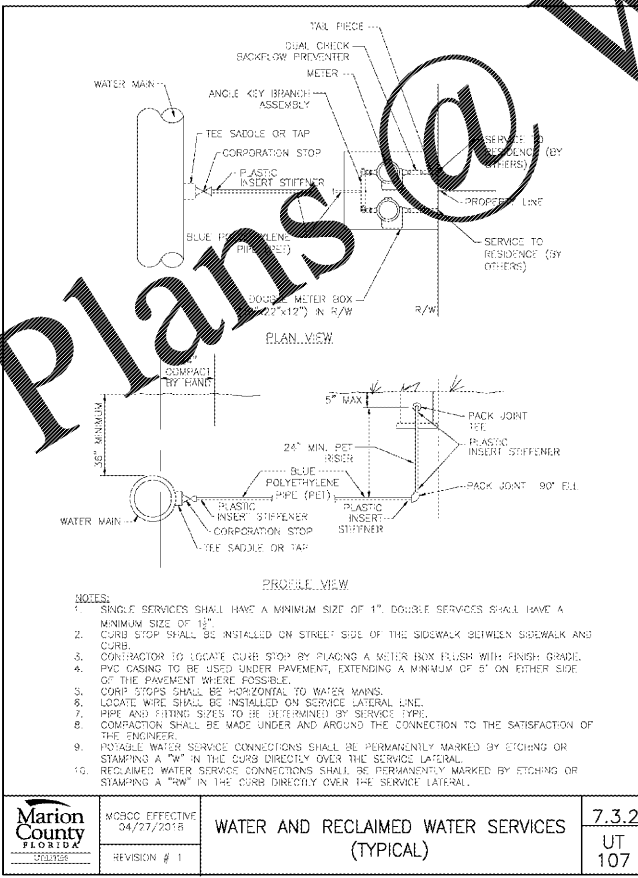
Marion County FLORIDA	MISC. EFFECTIVE 04/21/2018	7.3.2
	REVISION # NA	UT 209



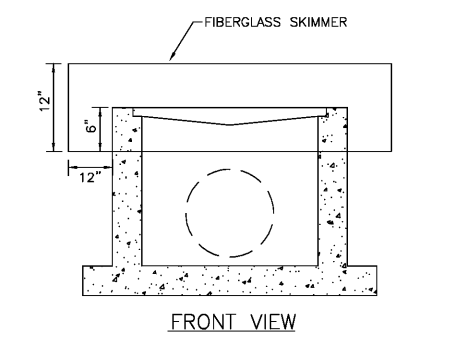
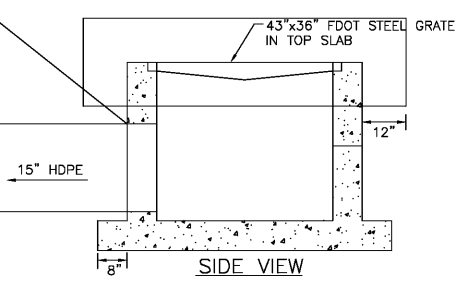
A MINIMUM OF THREE FEET OF UNCONSOLIDATED SOIL MATERIAL SHALL BE PROVIDED BETWEEN THE SURFACE OF ANY LIMESTONE BEDROCK AND THE BOTTOM AND SIDES OF ANY STORMWATER FACILITY.



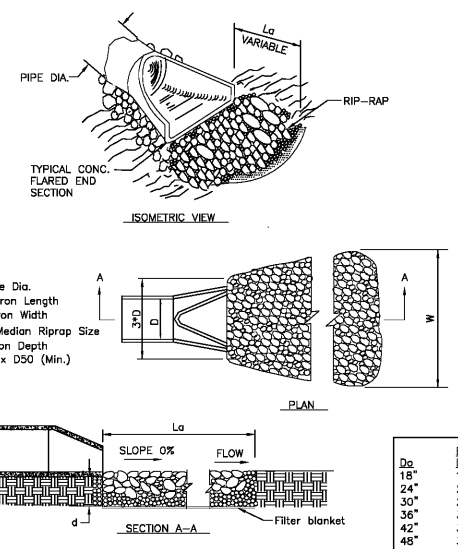
Marion County FLORIDA	MISC. EFFECTIVE 04/21/2018	7.3.2
	REVISION # 1	UT 104



Marion County FLORIDA	MISC. EFFECTIVE 04/21/2018	7.3.2
	REVISION # 1	UT 107



OUTLET CONTROL STRUCTURE (AT DETENTION)
FOOT TYPE D STRUCTURE



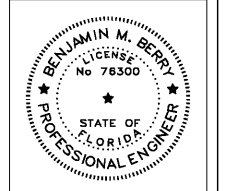
D ₅₀	L _a	W	D ₅₀
18"	14'	7.5'	8"
24"	20'	10'	10"
30"	25'	12.5'	10"
36"	32'	15'	12"
42"	32'	17.5'	12"
48"	37'	20'	15"

RIP RAP APRON - OUTLET CHANNEL
N.T.S.

BERRY ENGINEERS LLC
CIVIL ENGINEER
355 KEITH ST NW, SUITE 109
CLEVELAND, TN 37312
TEL: (615) 790-5880
CERTIFICATE OF AUTHORIZATION #0818

DEVELOPER:
BELTERRA PARTNERS
728 SHADES CREEK PKWY
SUITE 130
BIRMINGHAM, AL 35209

PROJECT:
MAJOR SITE PLAN
O'REILLY AUTO PARTS
SW HWY 484
MARION COUNTY, FL



BENJAMIN M. BERRY, STATE OF FLORIDA, PROFESSIONAL ENGINEER, LICENSE NO. 76300
THIS ITEM HAS BEEN ELECTRONICALLY SIGNED AND SEALED BY BENJAMIN M. BERRY, PE ON DATE AND/OR TIME STAMP SHOWN USING A DIGITAL SIGNATURE.
PRINTED COPIES OF THIS DOCUMENT ARE NOT CONSIDERED SIGNED AND SEALED AND THE SIGNATURE MUST BE VERIFIED ON ANY ELECTRONIC COPIES.

NO.	DESCRIPTION
1	
2	
3	
4	
5	

SHEET NAME:
SITE DETAILS

DATE: 05/04/2020
DRAWN BY: BMB
CHECKED BY: CMB
PROJECT NO.: 19078
SHEET NUMBER: C-08