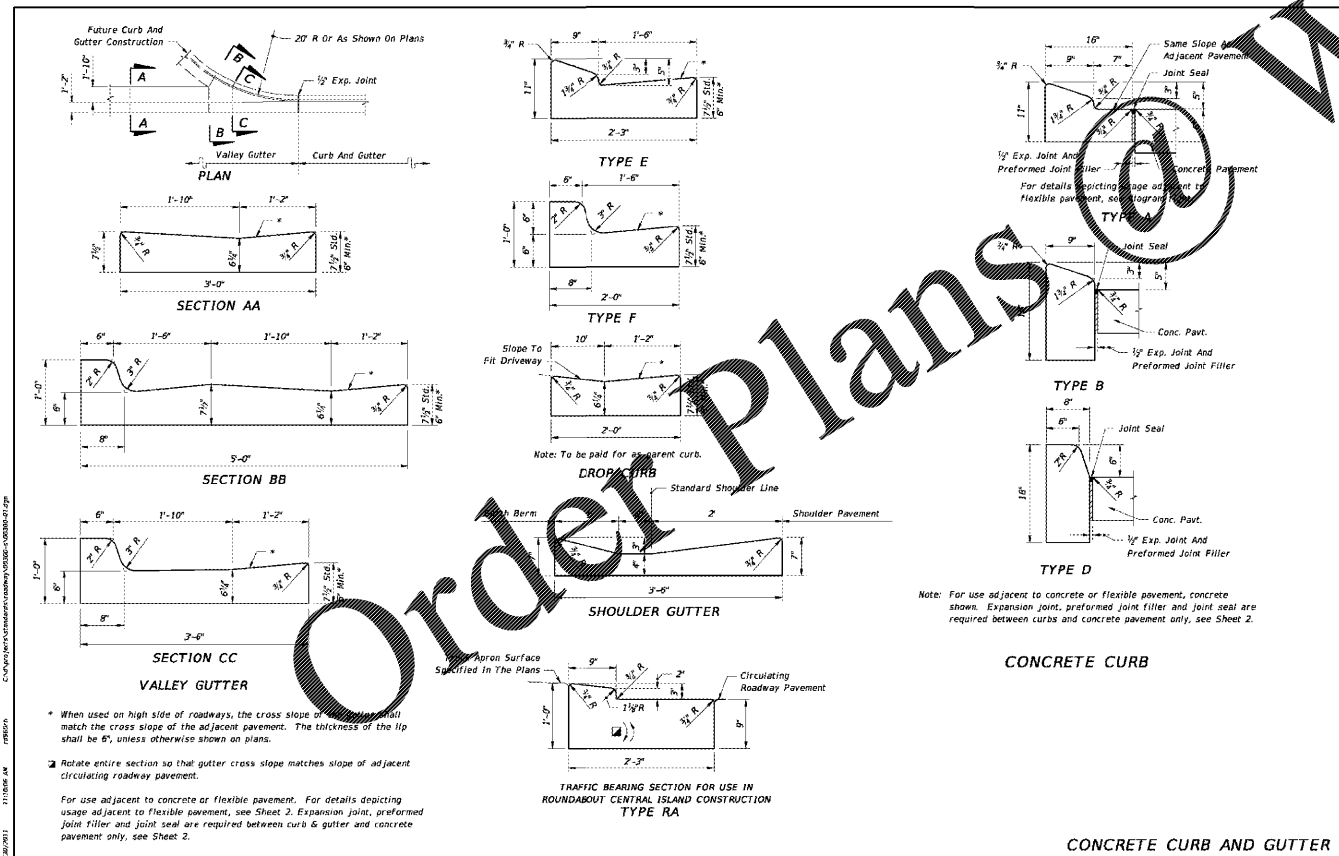


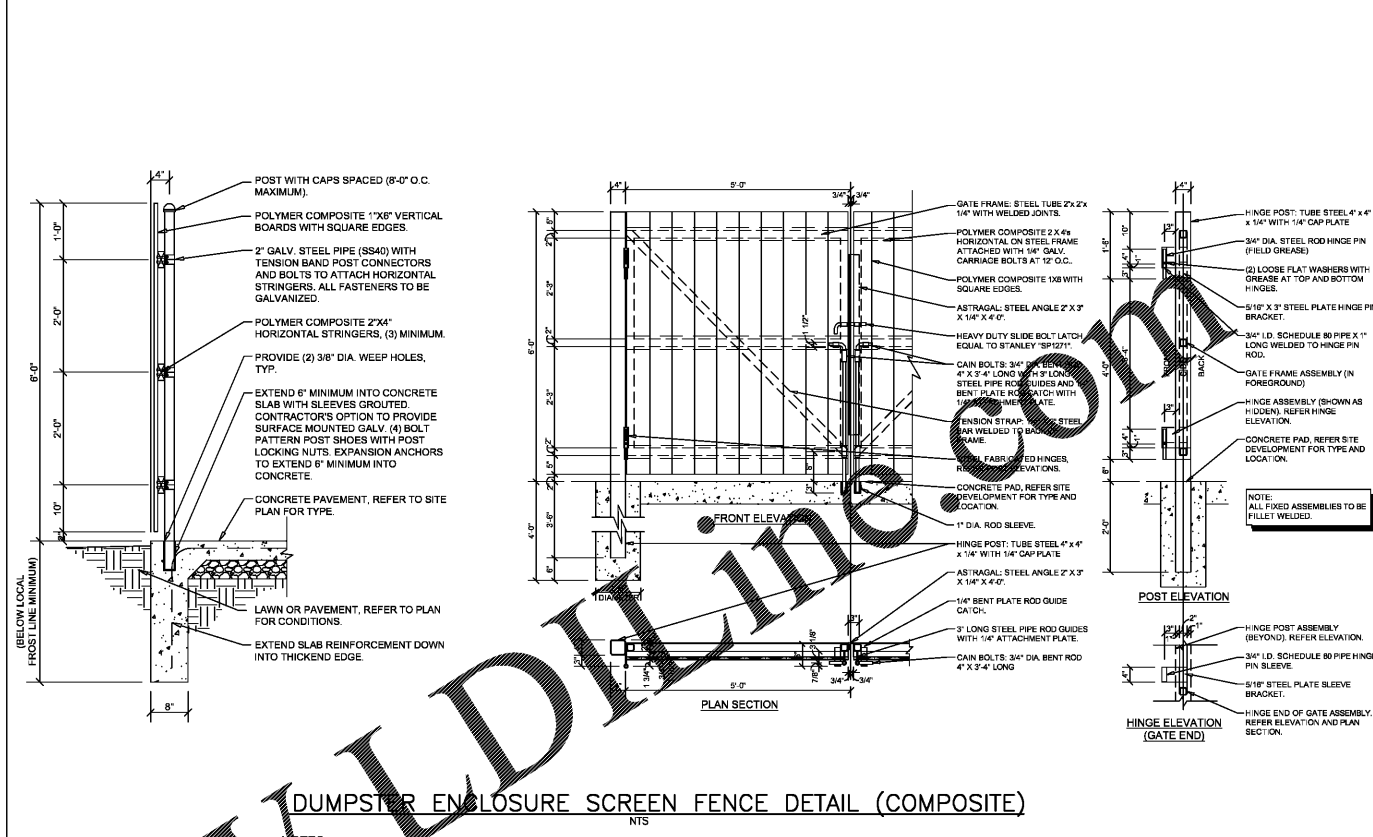
LAST REVISION	DESCRIPTION	INDEX	SHEET
11/01/18	FDOT FY 2020-21 STANDARD PLANS	522-002	4 of 8

1

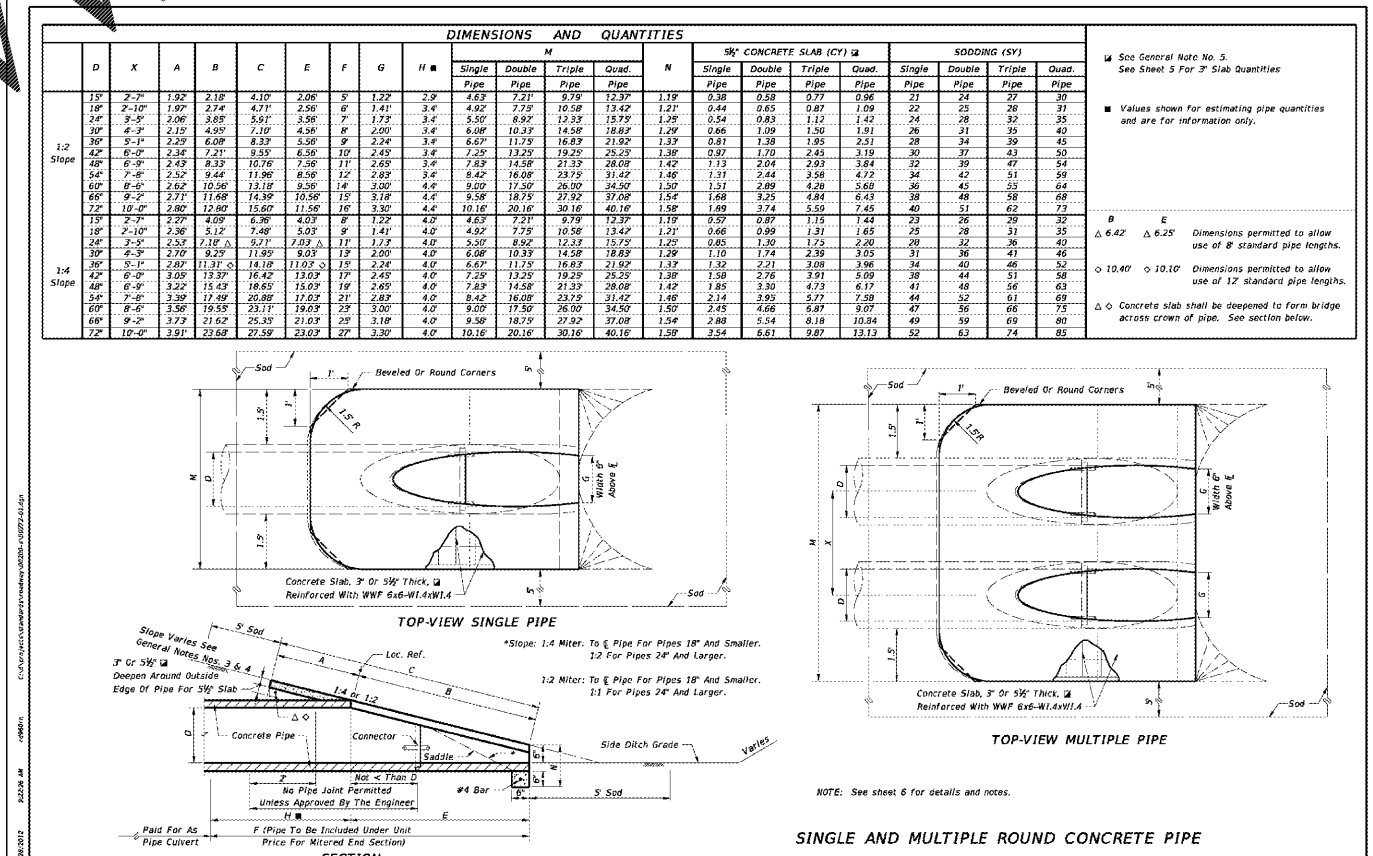


LAST REVISION	DESCRIPTION	INDEX	SHEET
00	FDOT DESIGN STANDARDS FY 2012/2013	300	1

2



LAST REVISION	DESCRIPTION	INDEX	SHEET
02	FDOT DESIGN STANDARDS 2013	272	1



LAST REVISION	DESCRIPTION	INDEX	SHEET
02	FDOT DESIGN STANDARDS 2013	272	1

4

BERRY ENGINEERS LLC
 3555 KEITH ST NW, SUITE 109
 CLEVELAND, TN 37312
 TEL: (615) 790-5880
 CERTIFICATE OF AUTHORIZATION #0838

DEVELOPER:
 BELTERRA PARTNERS
 728 SHADES CREEK PKWY
 SUITE 130
 BIRMINGHAM, AL 35209

PROJECT:
 MAJOR SITE PLAN
 O'REILLY AUTO PARTS
 SW HWY 484
 MARION COUNTY, FL

BENJAMIN M. BERRY
 LICENSE No. 76300
 STATE OF FLORIDA
 PROFESSIONAL ENGINEER

BENJAMIN M. BERRY, STATE OF FLORIDA, PROFESSIONAL ENGINEER, LICENSE NO. 76300
 THIS ITEM HAS BEEN ELECTRONICALLY SIGNED AND SEALED BY BENJAMIN M. BERRY, PE ON DATE AND/OR TIME STAMP SHOWN USING A DIGITAL SIGNATURE.
 PRINTED COPIES OF THIS DOCUMENT ARE NOT CONSIDERED SIGNED AND SEALED AND THE SIGNATURE MUST BE VERIFIED ON ANY ELECTRONIC COPIES.

REVISIONS
1
2
3
4
5

SHEET NAME:
 SITE DETAILS

DATE: 05/04/2020
 DRAWN BY: BMB
 CHECKED BY: CMB
 PROJECT NO: 19078
 SHEET NUMBER:

C-07