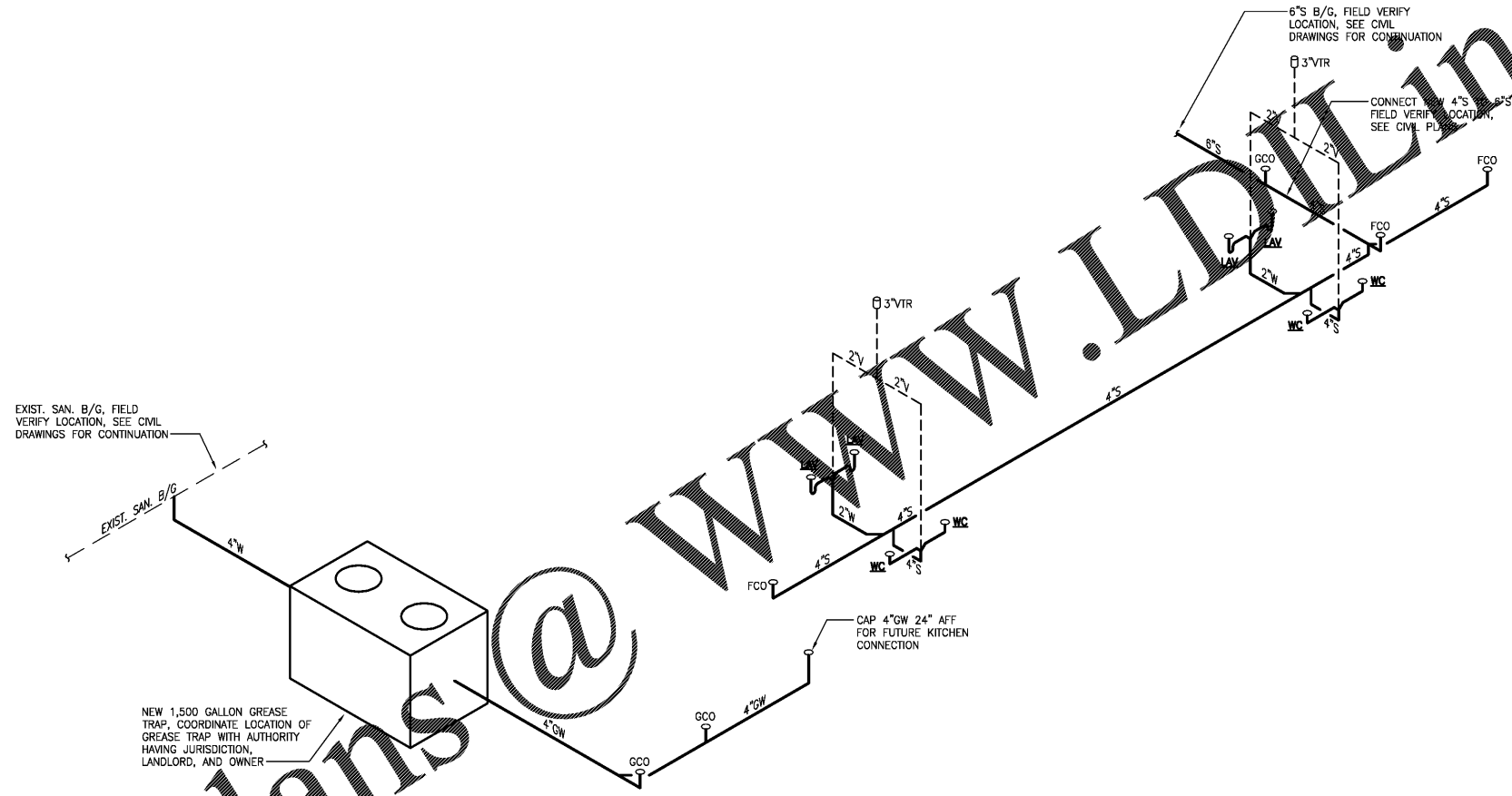


Order Plans@WWW.LDLINE.com



2 RETAIL SUITES (A THRU D) DRAINAGE RISER DIAGRAM
P-6.1 SCALE: NONE

EXIST. SAN. B/G, FIELD VERIFY LOCATION, SEE CIVIL DRAWINGS FOR CONTINUATION

NEW 1,500 GALLON GREASE TRAP. COORDINATE LOCATION OF GREASE TRAP WITH AUTHORITY HAVING JURISDICTION, LANDLORD, AND OWNER

6" S B/G, FIELD VERIFY LOCATION, SEE CIVIL DRAWINGS FOR CONTINUATION

CONNECT FROM 4" S 6" S, FIELD VERIFY LOCATION, SEE CIVIL PLANS

CAP 4" GW 24" AFF FOR FUTURE KITCHEN CONNECTION



DRAWING NO.		P-6.1	
DATE		06/16/20	
DESIGNED BY		W.S. MIKLER	
CHECKED BY		W.S. MIKLER	
DRAWN BY		W.S. MIKLER	
PROJECT NO.		15-000000	
PROJECT NAME		WILD WOLF - COMMERCIAL DEVELOPMENT BOYD MORRIS ROAD & GA HWY 293 SPUR BARTOW COUNTY, GEORGIA 30120	
GENERAL CONTRACTOR		BLACKWATER CONSTRUCTION 2100 SHELLIE BLVD - SUITE 400 - DULUTH, GEORGIA 30097 VOICE: 404-854-3500 E-MAIL: info@blackwater.com www.blackwater.com	
ENGINEERING CONSULTANT		LDLINE 1827 Powers Ferry Road Atlanta, Georgia 30359 Phone: (770) 952-9828	