

FOUNDATION LEGEND

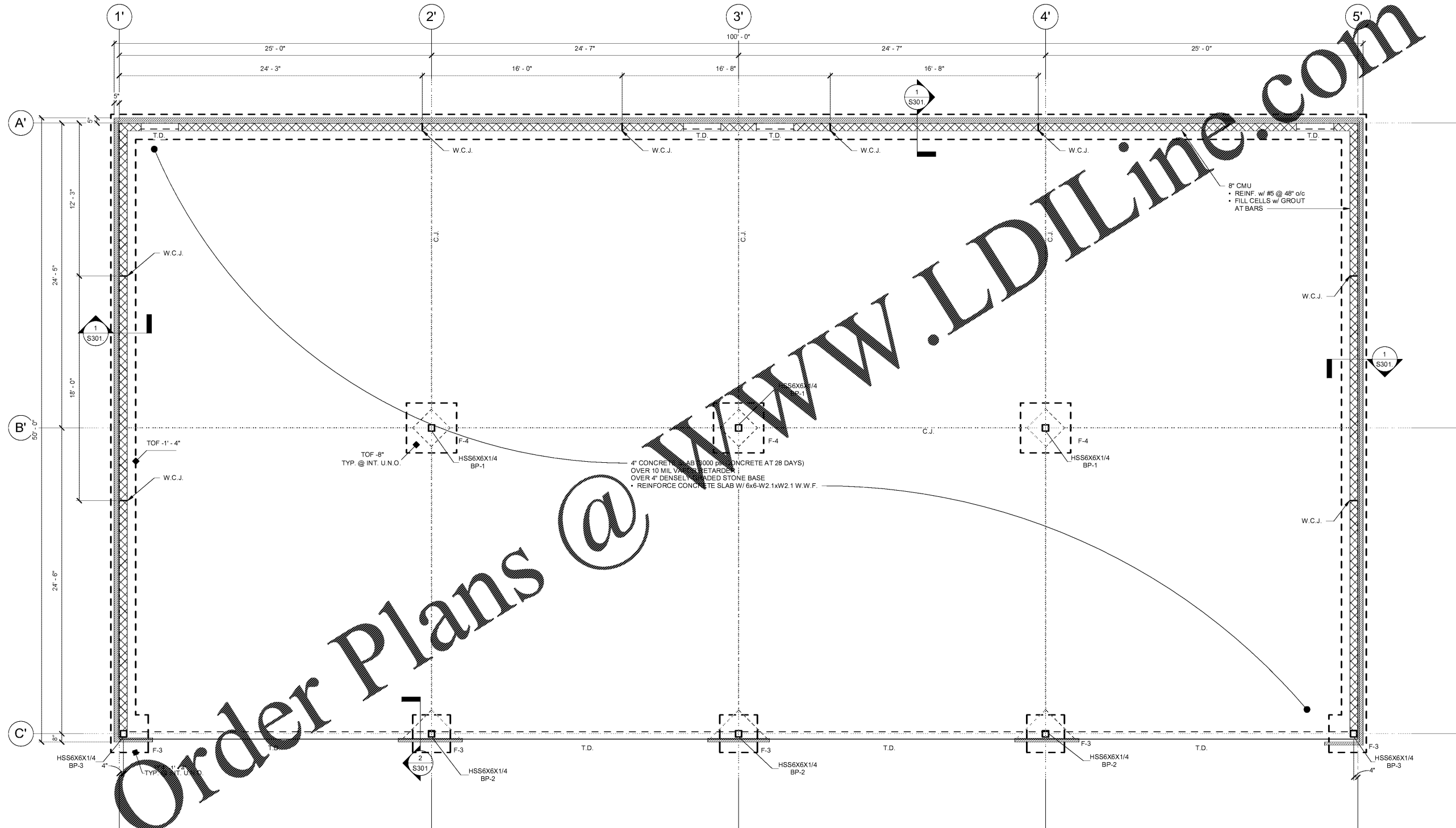
- C.J. CONTROL JOINT
- W.C.J. WALL CONTROL JOINT
- T.D. TURN-DOWN SLAB
- F.# FOOTING MARK, REFER TO FOOTING SCHEDULE ON S001
- BP.# BASE PLATE MARK, REFER TO BASE PLATE SCHEDULE ON S003
- TOF TOP OF FOOTING ELEVATION RELATIVE TO F.F.E. AS 0'-0"
- ☐ STEPPED FOOTING SYMBOL, REFER TO TYPICAL DETAIL
- X-XX SPOT ELEVATION

FOUNDATION PLAN NOTES:

1. CONTRACTOR COORDINATE FLOOR DRAIN LOCATIONS WITH PLUMBING DRAWINGS AND SLOPE SLAB TO DRAINS

FOOTING SCHEDULE RETAIL SUITES

Type Mark	Width	Length	Thickness	Top Reinf.	Bott Reinf.	Count	Volume	
F-3	3'-0"	3'-0"	1'-0"	NONE	3-#5, EW	5	45.00 CF	
F-4	4'-0"	4'-0"	1'-0"	NONE	4-#5, EW	3	48.00 CF	
Grand total:							8	93.00 CF



RETAIL & OFFICE SUITE BUILDING FOUNDATION PLAN
1/4" = 1'-0"

Order Plans @

WWW.LDILine.com

<p>LDI engineering consultant</p>	<p>5077 Dallas Hwy, Suite 201 Powder Springs, GA 30127 (404) 465-4889 www.mhstructures.com</p>
<p>MH STRUCTURES Integrity is our foundation.</p>	<p>general contractor</p>
<p>BLACKWATER CONSTRUCTION</p>	<p>2185 SATELLITE BLVD - SUITE 400 - DALLAS, GEORGIA, 30097 WWW.BWCONSTRUCTION.COM</p>
<p>ISSUED DATE: 5/15/20</p>	<p>PROFESSIONAL ENGINEER No. PE038341 HMM/MDM</p>
<p>RETAIL FOUNDATION PLAN</p>	<p>RETAIL SUITES OFFICE SPACE BOYD MORRIS ROAD & GA HWY 298 SPUR BARTOW COUNTY, GA</p>
<p>0612001 DRAWN BY: CJ SCALE: As Indicated DATE: 5/15/20</p>	<p>SHEET 01 OF 01</p>