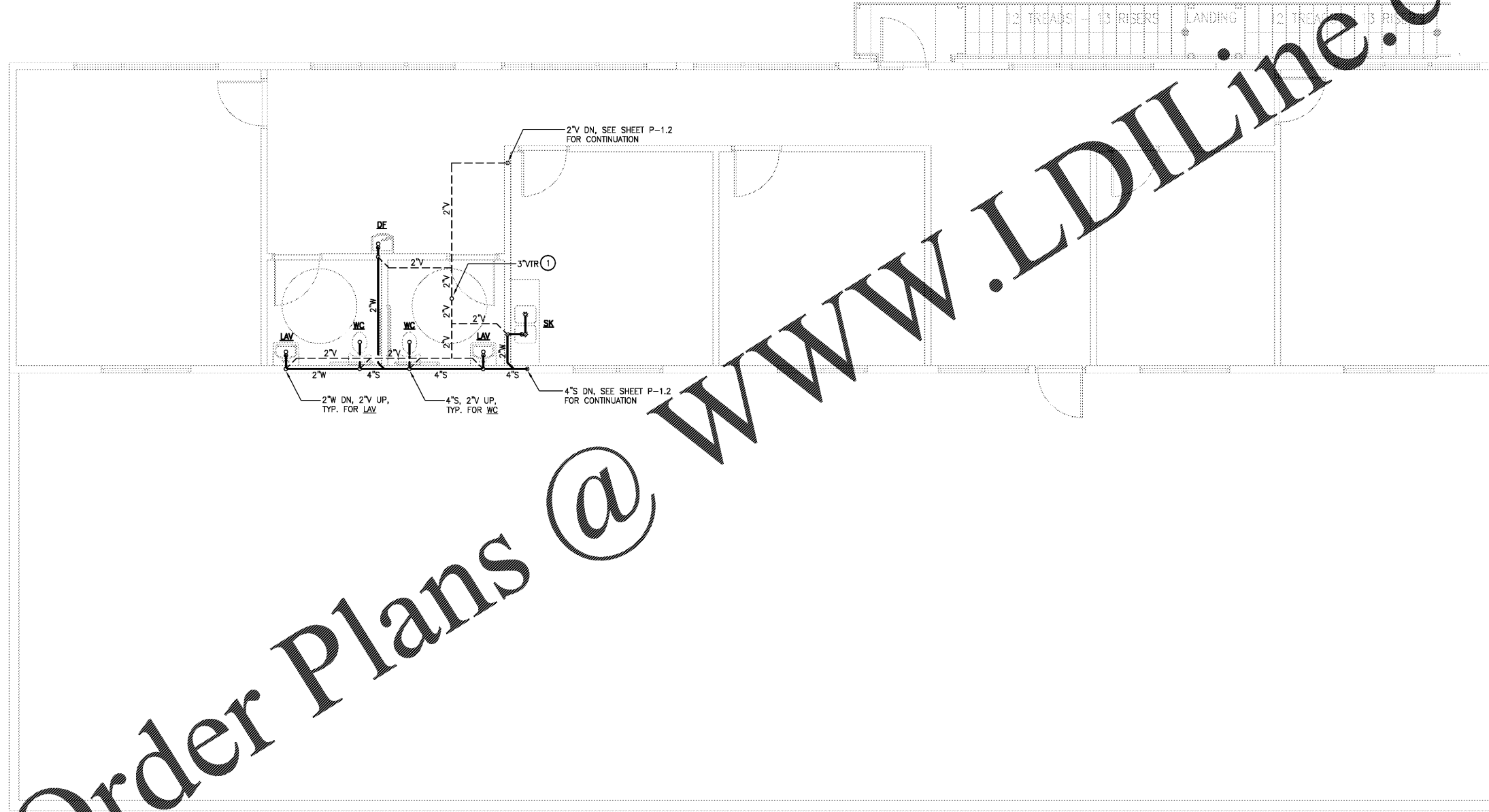


**GENERAL NOTES:**

1. CONTRACTOR SHALL CONFIRM EXISTING CONDITIONS PRIOR TO BID.
2. COORDINATE ALL MECHANICAL CONSTRUCTION WITH OTHER TRADES TO AVOID CONFLICTS.
3. CONFIRM LOCATIONS OF ALL EXISTING UTILITIES AND ADJUST ROUTING OF TENANT SYSTEMS AS REQUIRED.
4. EXISTING PLUMBING SERVICES (COLD WATER, HOT WATER, WASTE AND VENT) WHICH ARE NOT TO BE REUSED SHALL BE REMOVED BACK TO ACTIVE MAINS AND CAPPED. THERE SHALL BE NO "DEAD ENDS" LEFT IN PIPING SYSTEMS.

**KEYED NOTES:**

- ① VENTS SHALL BE MIN 1'-0" FROM ANY OUTDOOR AIR INTAKE.



Order Plans @ [www.LDILine.com](http://www.LDILine.com)

1 2ND FLOOR OFFICE DRAINAGE PLAN  
P-2.2 SCALE: 1/4" = 1'-0"



DATE: 06/16/20	EXTENSION:
general contractor	engineering consultant
<b>BLACKWATER CONSTRUCTION</b> 2100 SHELLE BLVD - SUITE 400 - DULUTH, GEORGIA 30097 VOICE: 404-844-3800 E-MAIL: <a href="mailto:info@blackwater.com">info@blackwater.com</a> <a href="http://www.blackwater.com">www.blackwater.com</a>	<b>GRAY</b> Gray Group Consulting Engineers, Inc. 1827 Powers Ferry Road Building 20, Suite 100 Atlanta, Georgia 30339 Tel: (770) 952-9523
2ND FLOOR OFFICE DRAINAGE PLAN	WILD WOLF - COMMERCIAL DEVELOPMENT BOYD MORRIS ROAD & GA HWY 293 SPUR BARTOW COUNTY, GEORGIA 30120
DRAWN BY: P-2.2	DATE: 06/16/20