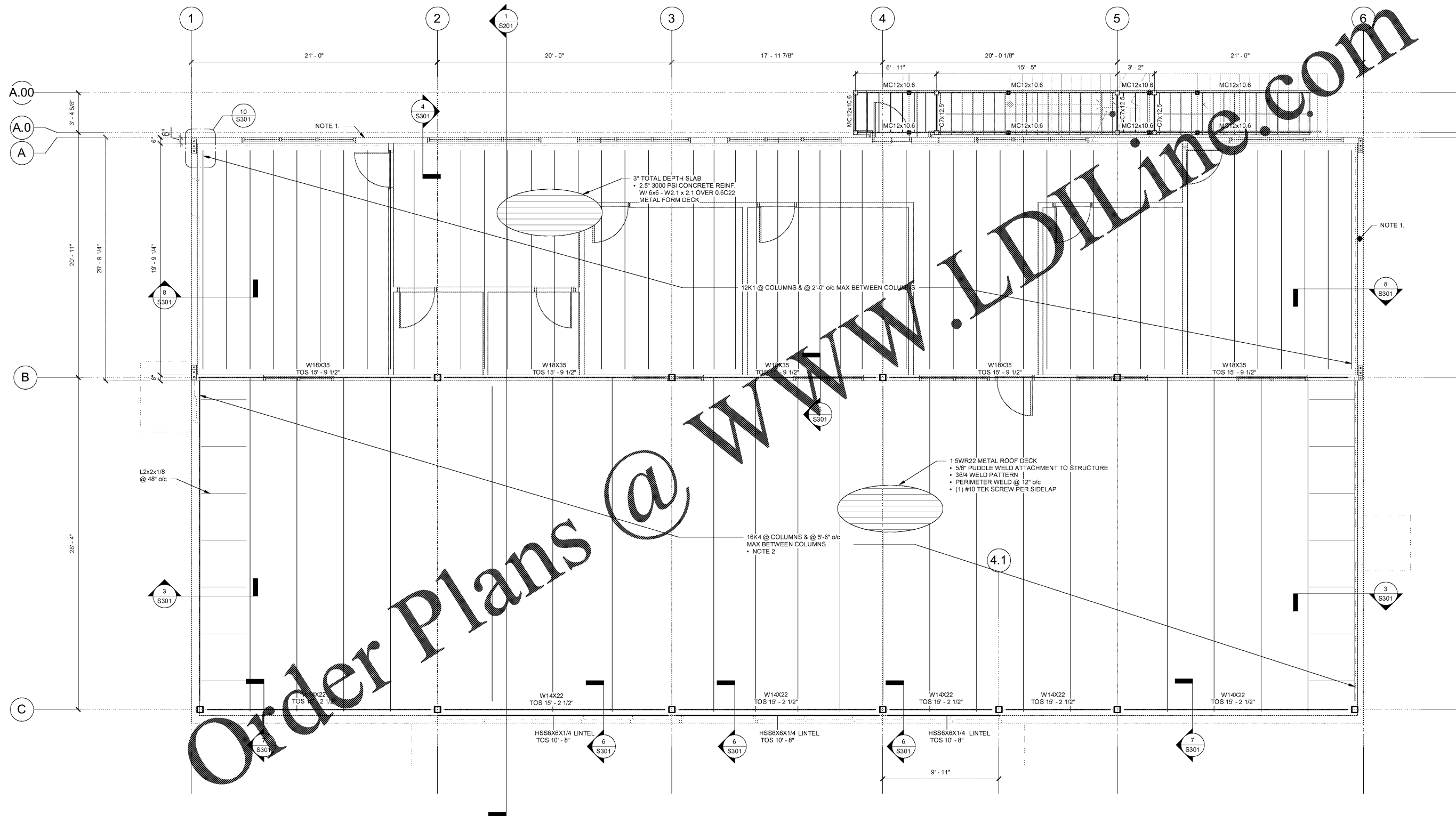


FRAMING LEGEND

- TOS TOP OF STEEL ELEVATION RELATIVE TO F.F.E AS 0'-0"
- TOM TOP OF MASONRY ELEVATION RELATIVE TO F.F.E AS 0'-0"
- T.O.P. TOP OF PARAPET ELEVATION RELATIVE TO F.F.E AS 0'-0"
- JB JOIST BEARING ELEVATION RELATIVE TO F.F.E AS 0'-0"
- X-XX' SPOT ELEVATION RELATIVE TO F.F.E AS 0'-0"



FRAMING PLAN NOTES:

1. ALL SECOND FLOOR WALLS ARE COLD-FORMED STUD SHEAR WALLS WITH 600S162-43 (33) @ 16" o/c AND APA 2416 RATED 7/16" SHEATHING (OSB). #8 SCREWS SHALL BE USED WITH FASTENER SPACING OF 6 INCHES AT DIAPHRAGM BOUNDARIES AND SUPPORTED PANEL EDGES, AND 12 INCHES AT FIELD. BACK-TO-BACK (2x) 600S162-54(50) W/ 12" FASTENER SPACING SHALL BE USED AS CHORDS.
2. ROOF JOIST HAVE NOT BEEN DESIGNED FOR ROOF TOP EQUIPMENT LOADS. CONTRACTOR TO PROVIDE JOIST MANUFACTURER WITH EQUIPMENT CUT SHEETS AND LOCATIONS.



STORE & MARKET BUILDING LOW ROOF / SECOND FLOOR OFFICE FRAMING PLAN
1/4" = 1'-0"

Order Plans @ www.LDILLinc.com

 <p>MH STRUCTURES Integrity is our foundation.</p>	<p>5077 Dallas Hwy, Suite 201 Powder Springs, GA 30127 (404) 465-4889 www.mhstructures.com</p>
<p>general contractor</p>	<p>BLACKWATER CONSTRUCTION 2185 SATELLITE BLVD - SUITE 400 - DALLAS, TEXAS 75243 PH: 469-994-1350 FAX: 469-994-1351 WWW.BLACKWATERCON.COM</p>
<p>SEAL</p>  <p>ISSUED DATE: 5/15/20</p>	<p>STORE/MARKET BUILDING BOYD MORRIS ROAD & GA HWY 298 SPUR BARTOW COUNTY, GA</p>
<p>0612001</p> <p>SCALE: As Indicated</p> <p>DATE: 5/15/20</p>	<p>S102</p> <p>SHEET OF</p>