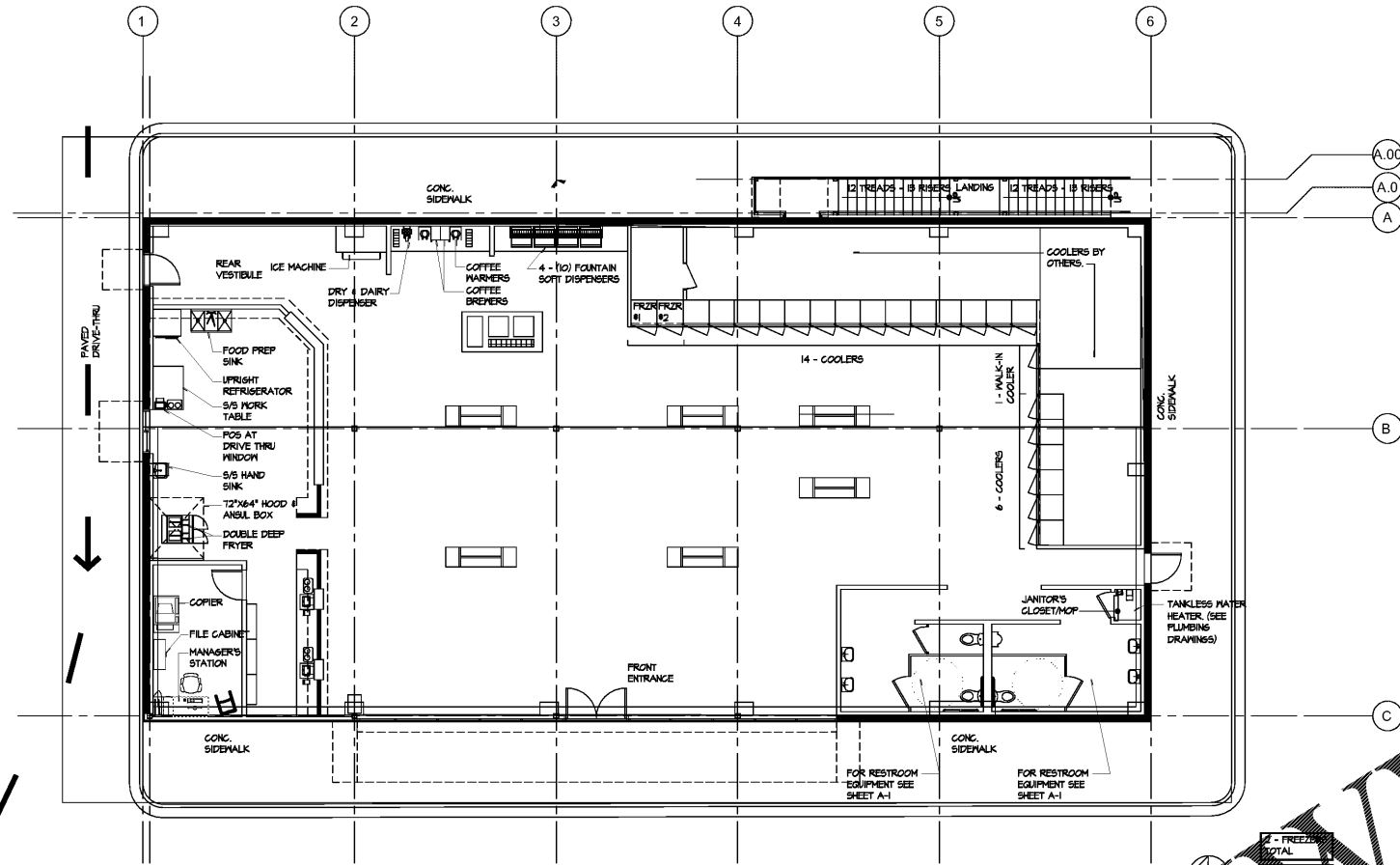


EQUIPMENT SCHEDULE



EQUIPMENT PLAN

www.LDILine.com

2 - FREEZER TOTAL
14 - COOLERS TOTAL
1 - WALK-IN COOLER
6 - COOLERS
1 - SINGLE DOOR WALK-IN COOLER TOTAL

SCALE: 1/8"=1'-0"

GENERAL NOTES

- 1) INFORM ARCHITECT OF ANY (E) CONDITION NOT NOTED PRIOR TO CONSTRUCTION.
- 2) SEE ADDITIONAL BACKING PLATE REQUIREMENTS • EQUIPMENT SCHEDULE AND FOR CASWORK SEE SHEET A.
- 3) SEE SHEET A FOR PARTITION TYPE INFORMATION.
- 4) WHERE EXISTING CORRIDOR PARTITIONS ARE NOT RATED, UPGRADE TO MEET OUR CONSTRUCTION.

SHEET NOTES



LEGEND

	EXISTING PARTITION TO REMAIN
	NON RATED PARTITION W/O OPENING PROTECTION
	SOUND TREATED PARTITION
	ONE HOUR CORRIDOR PARTITION
	NO WORK IN THIS AREA
	LIMIT OF PROJECT AREA
	DOOR TYPE
	PARTITION TYPE

DATE		REVISION					
DATE	BY	DATE	BY	DATE	BY	DATE	BY
06/15/20	A-5						
DRAWN BY		SCALE		DATE		BY	
A-5		1/8"=1'-0"		06/15/20		A-5	
general contractor				engineering consultant			
BLACKWATER CONSTRUCTION				BLACKWATER CONSTRUCTION			
2180 SATELLITE BLVD - SUITE 400 - DULUTH, GEORGIA 30097				2180 SATELLITE BLVD - SUITE 400 - DULUTH, GEORGIA 30097			
VOICE: 404-954-3500 E-MAIL: INFO@BLACKWATER.COM WWW.BLACKWATER.COM				VOICE: 404-954-3500 E-MAIL: INFO@BLACKWATER.COM WWW.BLACKWATER.COM			
EQUIPMENT PLAN AND SCHEDULE				EQUIPMENT PLAN AND SCHEDULE			
WILD WOLF - COMMERCIAL DEVELOPMENT				WILD WOLF - COMMERCIAL DEVELOPMENT			
BOYD MORRIS ROAD & GA HWY 293 SPUR				BOYD MORRIS ROAD & GA HWY 293 SPUR			
BARTOW COUNTY, GEORGIA 30120				BARTOW COUNTY, GEORGIA 30120			