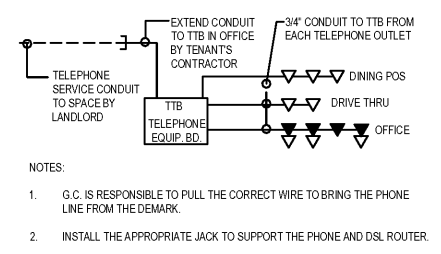
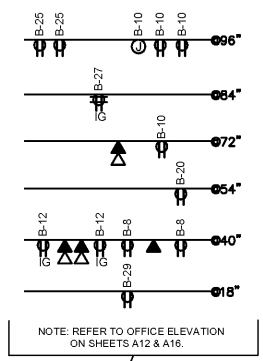


RUN 2" - 2" CONDUITS FROM TELEPHONE EQUIPMENT BOARD TO A LOCATION COORDINATED WITH LOCAL TELEPHONE COMPANY. OWNER REQUIREMENT SERVICE CONDUITS SHALL BE SIZED FOR 25 PAIR (MINIMUM). TELEPHONE SERVICE CABLE CONDUITS SHALL BE INSTALLED WITH PULL WIRE. CONDUITS RISE FROM U.G. INSIDE EXTERIOR WALL AND TURN-OUT WITH 90 DEG ELLS INSIDE BLDG. AT TERM. BD. SEE ARCHITECTURAL ELEVATIONS. OWNER REQUIRED SEPARATE TELEPHONE SERVICE LINES TO BUILDING:
 (1) LINE FOR VOICE
 (1) LINE FOR SECURITY
 (1) LINE FOR CREDIT CARD
 (1) LINE FOR CASH REGISTER
 (1) LINE FOR COMPUTER LINES



- NOTES:
- G.C. IS RESPONSIBLE TO PULL THE CORRECT WIRE TO BRING THE PHONE LINE FROM THE DEMARK.
 - INSTALL THE APPROPRIATE JACK TO SUPPORT THE PHONE AND DSL ROUTER.



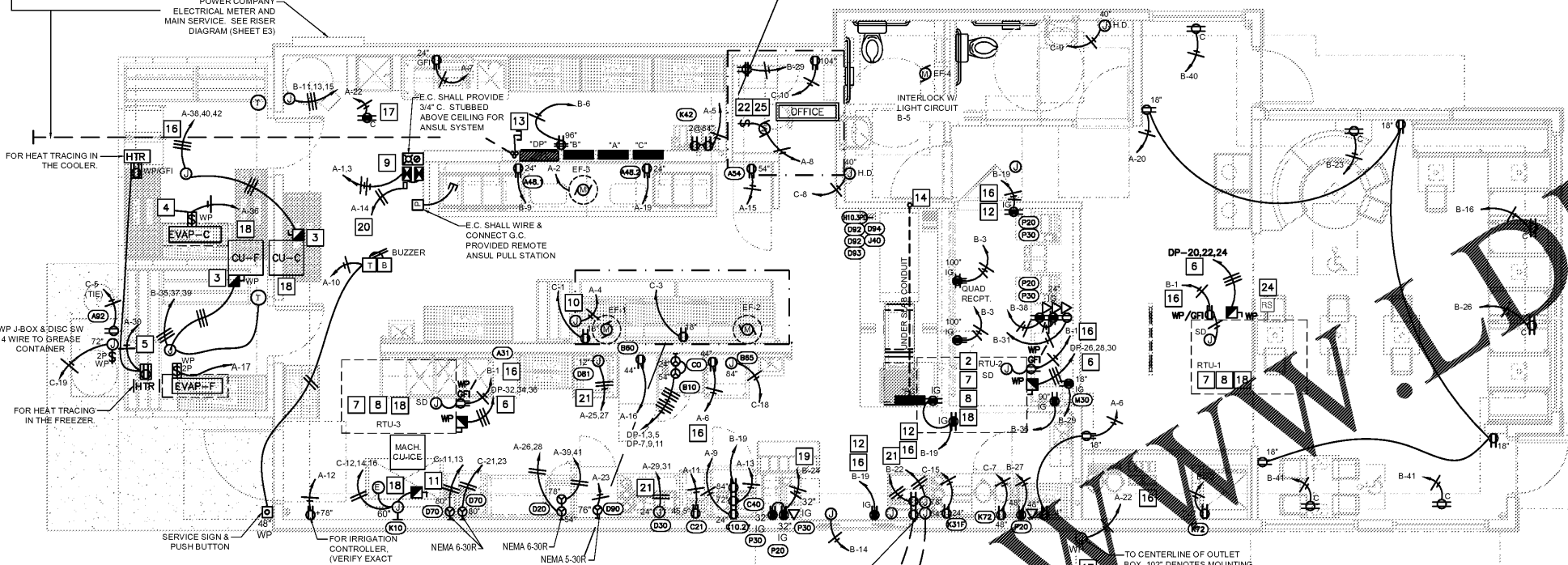
ALL KITCHEN AREA RECEPTACLES ARE TO BE LOCATED IN WALLS/BULKHEADS. NO KITCHEN AREA RECEPTACLES SHALL BE LOCATED IN THE CEILING

ALL 15A AND 20A RECEPTACLES IN KITCHEN SHALL BE GFCI PROTECTED

POWER PLAN KEY NOTES

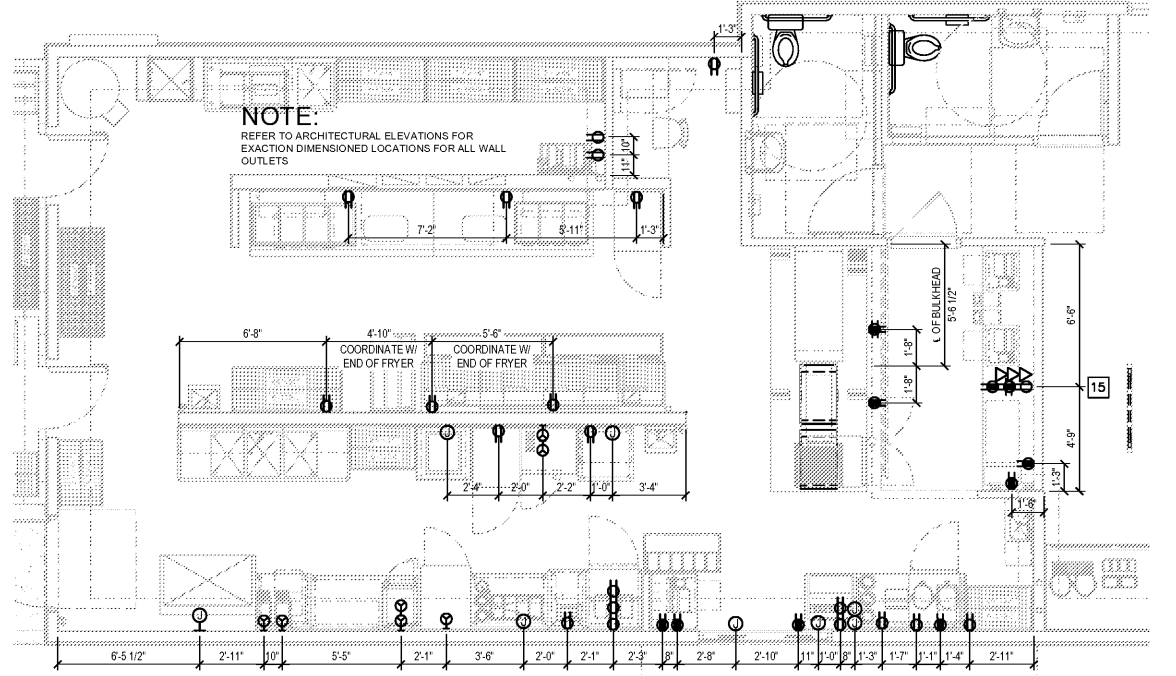
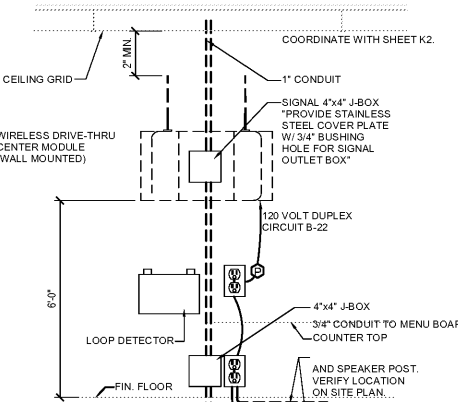
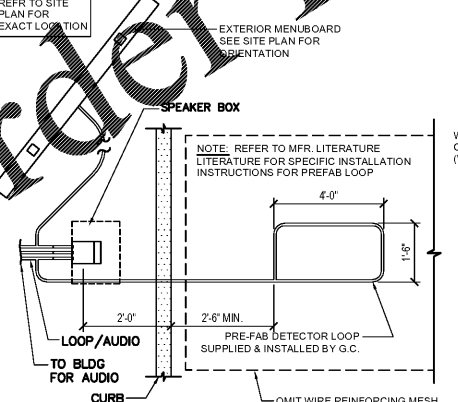
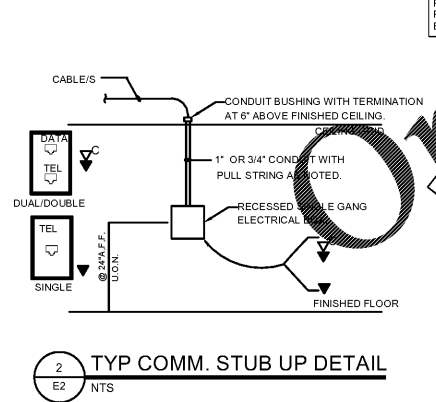
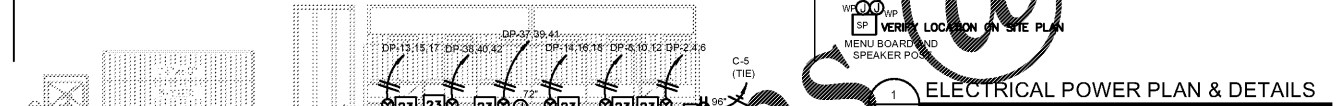
- REFER TO FOOD SERVICE DRAWING K1 FOR TAG LOCATIONS NOT SHOWN THIS SHEET.
- REFER TO HVAC DRG. M1 FOR EXACT LOCATIONS FOR MECHANICAL HVAC EQUIPMENT.
- 3P30A NEMA 3R FUSED DISC. ON WALK-IN COND. UNIT LOCATED ON ROOF. FUSE PER EQUIPMENT NAMEPLATE. LIQUID TIGHT FLEX CONNECTION.
- MAKE FINAL POWER CONNECTION TO WALK-IN COOLER EVAPORATOR. PROVIDE MOTOR SWITCH IN CABINET BOX.
- MAKE FINAL POWER CONNECTION TO WALK-IN FREEZER FREEZER EVAP., DEFROSTER, HEAT TAPE & DOOR HEATER.
- PROVIDE LOCAL 3P30A NEMA 3R NON-FUSED DISC SW. ON A/C RTUS LOCATED ON ROOF EQUIP. NAMEPLATE. PROVIDE LIQUID TIGHT FLEX CONN. TO UNIT.
- PROVIDE GFCI PROTECTED 5-20R DUPLEX RECEPT. INSTALLED IN WP BOX W/ WP COVER AT RTU. (TYP.)
- PROVIDE 120V WIRING TO DUCT MOUNTED SMOKE DETECTORS AND REMOTE TEST INDICATORS. FOR EXACT LOCATION OF DUCT DETECTOR LOCATIONS INDICATE & TEST SW'S. (SEE ARCHIT. ELEVATIONS).
- E.C. SHALL INSTALL ANY WIRE RELAY CONTROL PANEL PACKAGE. HOOD EXHAUST FANS EF-1 AND PROVIDE POWER AND INTERLOCK SIGNALS TO VIDEO CONTROL PANEL HOOD FAN. SEE ARCHIT. ELEVATIONS SYSTEM. SEE HOOD FAN CONTROL INTERLOCK WIRING DIAGRAM. PROVIDE MOTOR STARTERS AND CONTROLS ON WALL.
- ON/OFF SELECTOR SWITCH AND PILOT LIGHT INDICATOR 4x STAINLESS STEEL ENCLOSURE MOUNTED ON THE FACE OF THE HOOD. PROVIDED BY HOOD MFR.
- PROVIDE 2P30A NEMA 3R FUSED DISC SWITCH & L.T. FLEX CONNECTION TO ROOF MTE ICE MAKER COND UNIT. FUSE SIZE PER MFG'S NAMEPLATE DATA.
- PROVIDE WALL OUTLET W/ ISOLATED GROUND RECEPTACLES SUPPORTED FROM BLDG. LOCATE 6" BELOW CEILING. STRUCTURE FOR VIDEO MONITOR/PRINTER & OR HEADSET. VERIFY EXACT REQUIREMENTS & LOCATION. PROVIDE J-BOX AND CONDUIT WITH PULL STRING FOR VENDOR DATA CABLES.
- PROVIDE 3/4" x 1/8" x 24" W/ PLYWOOD TELEPHONE BOARD PAINTED WITH 2 COATS OF "LISTED" FIRE RETARDANT LIGHT GRAY COLOR PAINT, AT 96" A.F.F. PROVIDE QUAD RECEPTACLE ADJACENT TO BOARD.
- ROUTE CONDUITS DOWN IN WALL TO 125 AMP PANEL "PC" WITHIN PRODUCTION COUNTER TO SERVE EQUIPMENT.
- COORDINATE KNEE WALL RECEPTACLE LOCATIONS WITH GC TO ENSURE ACCESSIBLE AFTER FINAL INSTALLATION OF UNDER-COUNTER SHELVING.
- BRANCH CIRCUIT(S) CONTINUED TO ADDITIONAL OUTLETS. HOMERUN SHOWN FOR CLARITY ONLY.
- OUTLET AND CONNECTION FOR SECURITY CAMERA TO BE LOCATED IN BULKHEAD, 6" BELOW CEILING GRID. VERIFY EXACT LOCATIONS AND TYPE CONNECTIONS FOR INDOOR AND OUTDOOR CAMERAS WITH G.C.
- ROUTE ALL CONDUIT ROOF PENETRATIONS THRU (WITH-IN) ROOF CURBS FOR THE EQUIPMENT. REFER TO MECH. PLANS FOR CURB DETAILS. (TYPICAL)
- PROVIDE 1" CONDUIT TO 6" ABOVE CEILING.
- HOOD EXHAUST SUPPRESSION SYSTEM.
- MAKE FINAL CONNECTION TO EQUIPMENT FLEX CONN. TO UNIT.
- PROVIDE EXHAUST FAN WITH WALL SWITCH.
- CONTRACTOR TO PROVIDE MIN. 70 A 4' LONG CORD AND PLUG FOR ELEC. FRYERS (1 PER EACH). RECEPTACLE SHALL BE RECESSED POWERTITE 100AMP ADJA1034-200 AT 18" A.F.F.
- RAIN SENSOR
- LABEL ALL SWITCHES AND TIMERS ON OFFICE WALL.

- P.O.S. NOTES:
- ALL P.O.S. (POINT OF SALE) CIRCUITS SHALL HAVE AN ISOLATED GROUND WIRE BACK TO THE PANEL. ALL P.O.S. EQUIP. SHALL BE WIRED INDEPENDENTLY OF ANY NON-P.O.S. EQUIPMENT.
 - ALL RECEPTACLES FOR P.O.S. EQUIPMENT SHALL BE ISOLATED GROUND WITH SURGE SUPPRESSOR TYPE. ALL RECEPTACLES FOR P.O.S. EQUIPMENT SHALL BE SINGLE UNIT, UNLESS A DUPLEX RECEPTACLE CAN BE USED TO SUPPLY TWO P.O.S. UNITS. DUPLEX RECEPTACLES MAY BE USED IN THE MANAGER'S OFFICE FOR NON-P.O.S. EQUIPMENT (COMPUTER, MUSIC, FIRE ALARM, SECURITY, ETC.)
 - ALL CIRCUITS FOR P.O.S. EQUIPMENT SHALL BE CONNECTED TO THE SAME PHASE OF POWER IN THE PANEL. ALL BRANCH CIRCUIT BREAKERS SUPPLYING P.O.S. EQUIPMENT SHALL HAVE LOCKING HANDLES DEVICES.
 - EACH RECEPTACLE TYPE (LOCKING OR STRAIGHT BLADE) SHALL MATCH THAT OF THE EQUIPMENT FURNISHED. WHERE P.O.S. EQUIPMENT IS FURNISHED WITHOUT A PLUG THE RECEPTACLE SHALL BE LOCKING TYPE. COORDINATE RECEPTACLE TYPES WITH THE P.O.S. EQUIPMENT SUPPLIER.
- GENERAL NOTES:
- VERIFY MOUNTING HEIGHTS OF ALL RECEPTACLES WITH EQUIPMENT SUPPLIED PRIOR TO INSTALLATION.
 - ALL EQUIPMENT ELECTRICAL OUTLETS ARE DIMENSIONED TO CENTERLINE OF BOX FROM ABOVE FINISHED FLOOR.
 - ELECTRICAL CONTRACTOR TO PROVIDE CORD & PLUG CONNECTIONS FOR EQUIPMENT AS REQUIRED.
 - ALL DINING ROOM CEILING RECEPTACLES SHALL BE WHITE.



NOTE:
 CONTRACTOR TO PROVIDE MIN. 70 A 4' LONG CORD AND PLUG FOR ELEC. FRYERS (1 PER EACH). RECEPTACLE SHALL BE RECESSED. POWERTITE 100AMP ADJA1034-200 AT 18" A.F.F.

FOR DRIVE-THRU AUDIO SYSTEM SEE DETAIL 4 THIS SHEET



ARCHITECTURE ENGINEERING

LIS

LAND INVESTMENT SERVICES, LLC

2150 Palm Beach Blvd
 Avon, FL 32003
 Phone: (386) 983-8829
 Fax: (386) 983-8829

ARCHITECT ENGINEER

CLIENT NAME

SOUTHEASTERN RETAIL DEVELOPMENT, LLC

BLDG M-1, UNIT 231

2030 COUNTY ROAD 30A

SANTA ROSA BEACH, FL 32459

PROJECT NAME

POPEYES

PLK 1930-28-DL SAILORMEN

501 N HWY 49

BYRON, CA 94008

PROJECT NO.

2020-085

ISSUE DATE

05/07/20

DRAWN

JC

CHECKED

JC

SHEET NO.

E2

POWER PLAN

POWER PLAN

ROBERT W. CASE
 GEORGIA PE #202954

RELEASE

DATE

LIS EXPRESSLY RESERVES ITS COPYRIGHT AND ALL OTHER PROPERTY RIGHTS TO THESE DOCUMENTS AND THEIR DESIGN. HENCE, THEY ARE NOT TO BE REPRODUCED.