

HOOD INFORMATION - Job#2968716

HOOD NO.	TAG	MODEL	LENGTH	MAX COOKING TEMP.	TOTAL EXH. CFM	EXHAUST PLENUM RISER(S)						HOOD CONSTRUCTION	END TO END	ROW	
						WIDTH	LENG.	HEIGHT	DIA.	CFM	VEL.				S.P.
1		2812 BLL	11' 3"	600 Deg	1870	7"	10"	4"		900	1954	-0.429"	304 SS	ALONE	ALONE
3	Batter Station1	3024 VHB-G	6' 0"	700 Deg	600	7"	10"	4"	12'	500	764	-0.047"	430 SS	ALONE	ALONE

HOOD INFORMATION

HOOD NO.	TAG	TYPE	FILTER(S)				LIGHT(S)				WIRE GUARD	LOCATION	SIZE	UTILITY CABINET(S)		FIRE SYSTEM PIPING	HOOD HANGING WGT
			QTY	HEIGHT	LENGTH	EFFICIENCY @ 7 MICRONS	QTY	TYPE	TYPE	SIZE				MODEL #	QUANTITY		
1		SS Baffle with Handles	8	10"	16"	30%	0				Wall Mt	12x36x24"	Ansul R102	3.0/3.0/3.0		YES	212 LBS
3	Batter Station1						0									NO	169 LBS

HOOD OPTIONS

HOOD NO.	TAG	OPTION
1		BACKSPLASH 108.00" High X 135.00" Long 304 SS Vertical
2		OPTIONS ONLY: FIELD WRAPPER 22.50" High x 60.00" Long Left 304 SS
		OPTIONS ONLY: FIELD WRAPPER 22.50" High x 60.00" Long Right 304 SS
		OPTIONS ONLY: FIELD WRAPPER 22.50" High x 60.00" Long Left 304 SS
		OPTIONS ONLY: FIELD WRAPPER 22.50" High x 60.00" Long Right 304 SS
		OPTIONS ONLY: FIELD WRAPPER 37.00" High x 60.00" Long Front 304 SS
		OPTIONS ONLY: FIELD WRAPPER 37.00" High x 60.00" Long Front 304 SS
		OPTIONS ONLY: WRAPPER CHANNEL - 19.00" Long
		OPTIONS ONLY: WRAPPER CHANNEL - 19.00" Long
		OPTIONS ONLY: WRAPPER CHANNEL - 19.00" Long
		OPTIONS ONLY: WRAPPER CHANNEL - 28.00" Long
3	Batter Station1	FIELD WRAPPER 20.00" High Front, Left, Right

BLL Series Specification

The BLL series hood is a low proximity passover type hood. Hood shall have size, shape and performance specified on drawings.

Construction shall be type 430 stainless steel with a #3 or #4 polish where exposed. All seams shall be welded and have stainless steel on exposed surfaces. Unexposed surfaces shall be constructed of aluminized steel. Individual component construction shall be determined by manufacturer and ETL. Construction shall be dependent on the structural application to minimize distortion and other defects. All seams, joints and penetrations of the hood enclosure to its lower outermost perimeter that directs and captures grease-laden vapor and exhaust gases shall have a liquid-tight continuous external weld in accordance with NFPA 96. Hood shall be wall type with provisions to screw to back wall.

Ventilator shall be furnished with UL classified aluminum baffle filters, supplied in size and quantity as required by ventilator. The filters shall extend the full length of the hood and the filler panels shall not be more than 6" in width.

The hood manufacturer shall supply complete computer generated submittal drawings including hood section view(s) and hood plan view(s). These drawings must be available to the engineer, architect and owner for their use in construction, operation and maintenance.

Exhaust duct collar to be 4" high with 1" flange. Duct sizes, CFM and static pressure requirements shall be as shown on drawings. Static pressure requirements shall be precise and accurate; air velocity and volume information shall be accurate within 1-ft increments along the length of the ventilator.

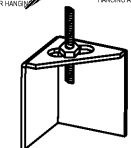
The hood shall have:
-A sloped grease drain system which shall be an enclosed integral part of the hood back with an exposed, removable 1/2 pint grease cup to facilitate cleaning.
-Low profile design to allow plate shelf and passover design.

The hood shall be ETL Listed as "Exhaust Hood Without Exhaust Damper", ETL Sanitation Listed and built in accordance with NFPA 96. The hood shall be listed for 400° F cooking surfaces at 110 CFM/ft.

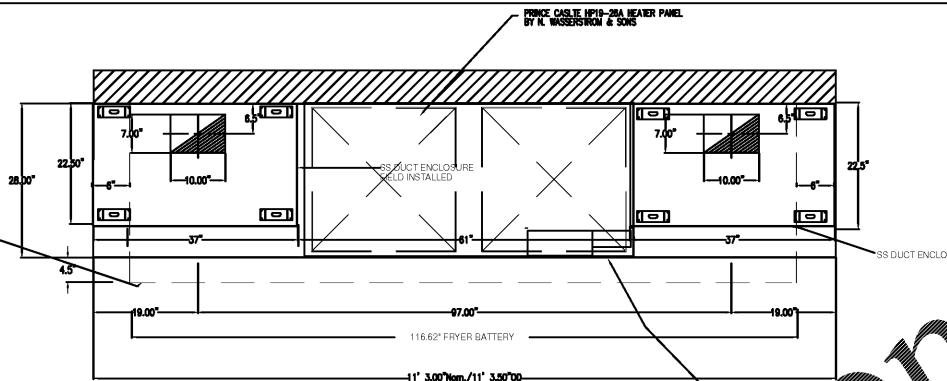
GENERAL NOTES

- INSTALLATION**
- ALL ELECTRICAL "FIELD" CONNECTIONS AND RELATED INTERCONNECTIONS BY ELECTRICAL CONTRACTORS
 - ALL PLUMBING "FIELD" CONNECTIONS AND RELATED INTERCONNECTIONS BY PLUMBING CONTRACTORS
 - HANGING BRACKETS TO BE LOCATED AND WELDED AS SHOWN ON PLANS. ALL OTHER HANGER MATERIALS PROVIDED BY INSTALLING CONTRACTORS.
 - ALL CONNECTIONS FROM CAPTIVE ARE DUCT PER MECHANICAL CONTRACTORS/PLANS
 - COOKING EQUIPMENT TO SHUT OFF IN EVENT OF FIRE
 - EXHAUST FANS TO TURN ON IN EVENT OF FIRE
 - ALL LIGHTS TO BE SHOWN INSTALLED BY CAPTIVE ARE ARE FACTORY PROVIDED. INTERCONNECTIONS BETWEEN HOODS AND TO SHUT OFF BY ELECTRICAL CONTRACTORS
 - LAMPS OR LIGHT FIXTURES BY INSTALLING CONTRACTORS
 - SEISMIC RESISTANTS ARE RESPONSIBILITY OF INSTALLING CONTRACTOR
 - INSTALLING CONTRACTORS ASSUME ALL RELATED RESPONSIBILITY FOR VERIFICATION OF DIMENSIONAL DATA COMPLIANCE ON THESE DOCUMENTS FOR ACCURACY, INTEGRATION AND ADMINISTRATION OF CODE REQUIREMENTS IN EFFECT PRIOR TO ANY RELEASE FOR PRODUCTION OF EQUIPMENT SHOWN
- BALANCE**
- KITCHEN HOODS MUST BE BALANCED WITH TOCHEN
 - KITCHEN SHALL BE NEGATIVE WITH RESPECT TO ZONE/AREA
 - RESTAURANT SHALL BE POSITIVE WITH RESPECT TO AMBIENT PRESSURE
- ADDITIONAL**
- WRITTEN HOOD DIMENSIONS HAVE PRECEDENCE OVER SCALE
 - OWNER AND ARCHITECT/ENGINEER SHALL BE ADVISED IN WRITING THAT THE HOOD DOCUMENT MUST BE RECEIVED BY THE FACTORY PRIOR TO COMMENCEMENT OF FABRICATION

HOOD STYLE	DIM FROM REAR	DIM FROM FRONT (24")	DIM FROM FRONT (30")	EXHAUST QP=LENGTH OF HOOD X CFM/ALTY (L/GAS)	SUPPLY QP=EXHAUST QP X PERCENTAGE REQUIRED	TOTAL DUCT AREA=1.64X	DUCT LENGTH	DUCT DEPTH	CAPTIVE ARE HOODS HAVE OPTIONAL CLEARANCE	REDUCTION SYSTEMS AVAILABLE AS FOLLOWS:
CANDY	4.188"	2.248"	2.248"						NON-COMBUSTIBLE	NONE REQUIRED
NO2PSP-F	4.188"	2.248"	2.248"						LIMITED-COMBUSTIBLE	2" UNINSULATED STANDOFF
BACKSHELF	4.188"	2.248"	-						COMBUSTIBLE	1" INSULATED STANDOFF
VHB/VHB-G	36"x36"	42"x42"	48"x48"							
FRONTTRACK	2.248"	2.248"	2.248"							



FRYER BATTERY WITH MINIMUM 2" MIN. SIDE OVERHANG AND 4.5" FRONT UNDERHANG BY HOOD PER ETL LISTING FILE #3054804-001



PLAN VIEW - Hood #1
11' 3.00" LONG 2812BLL

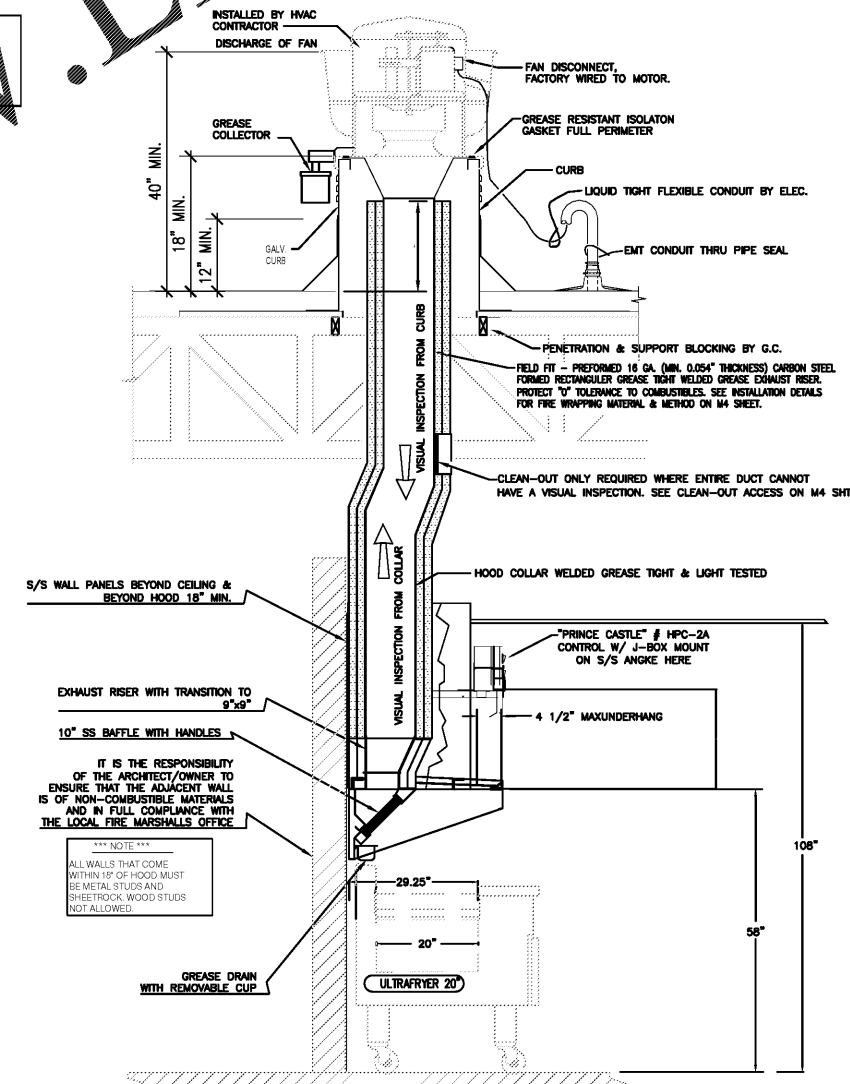
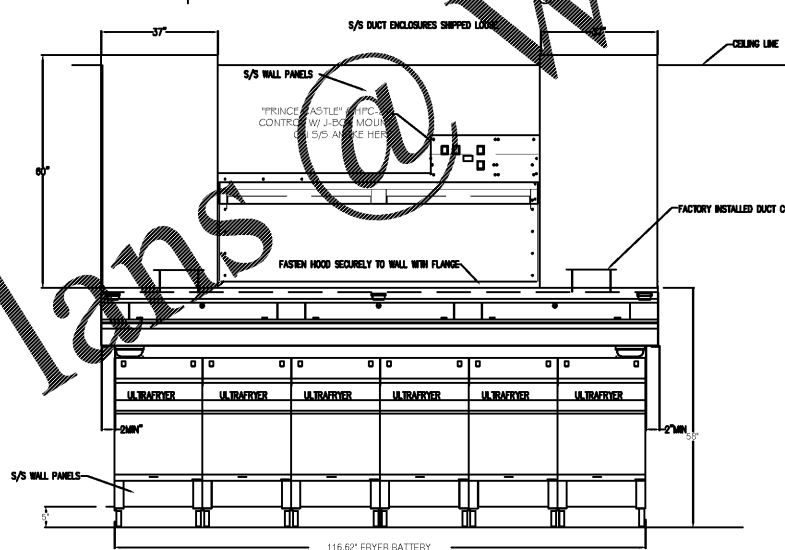
Backshelf Exhaust-Only ETL Ratings - File 3054804-001

HOOD MODEL	MAX TEMP	MAX EXH. CFM/FT	LENGHT RANGE	MAX LENGTH FOR 1 RISER	WIDTH RANGE	WIDTH INCH	SIDE OVER-HANG	FRONT OVER-HANG	VERTICLE CLEARANCE WITH LIGHTS	VERTICLE CLEARANCE WITHOUT LIGHTS
BLL	400DEG	110	3'-24'	16'	26'-3'	-	2"	-4.5"	-	8"-26"

All enclosure panels 60" tall with vertical grain

FRYER BATTERY WITH MINIMUM 2" MIN. SIDE OVERHANG AND 4.5" FRONT UNDERHANG BY HOOD PER ETL LISTING FILE #3054804-001

All enclosure panels 60" tall with vertical grain



IT IS THE RESPONSIBILITY OF THE ARCHITECT/OWNER TO ENSURE THAT THE ADJACENT WALL IS OF NON-COMBUSTIBLE MATERIALS AND IN FULL COMPLIANCE WITH THE LOCAL FIRE MARSHALLS OFFICE

A SECTION
SCALE NTS

GENERAL NOTE:
CAPTIVE AIRE SHOWN AS BASIS OF DESIGN.
NO SUBSTITUTIONS ALLOWED.

REVISIONS

NO.	DESCRIPTION	DATE

CAPTIVE

Ohio Selected Accounts

100 E. Campus View Blvd., Suite 250, Westerville, OH 43082 PHONE: (614) 679-7638 FAX: (614) 800-4534 EMAIL: tm.anderson@captiveline.com www.captiveline.com

POPEYES - Sailorman Prototype 2017

DATE: 11/15/2017

DWG.#: 2968716

DRAWN BY: tanders

SCALE: 3/4" = 1'-0"

MASTER DRAWING

SHEET NO.

RELEASE DATE

1	
2	
3	
4	
5	
6	

PROJECT NO. 2020-085

ISSUE DATE 05/07/20

DRAWN CHECKED CS

SHEET NO. M3.0

TYPE-1 HOOD (FRYER HOOD DETAILS)

ARCHITECTURE ENGINEERING

LIS

LAND INVESTMENT SERVICES, LLC

2150 Palm Beach Blvd
Ave. FL 33500
Phone: (239) 983-8829
Facsimile: (239) 983-8829

ARCHITECT ENGINEER

CLIENT NAME: SOUTHEASTERN RETAIL DEVELOPMENT, LLC

BLDG M-1, UNIT 231
2050 COUNTY ROAD 30A
SANTA ROSA BEACH, FL 32459

PROJECT NAME: POPEYES

PLK 1930-28-DL SAILORMEN

501 N HWY 49
BRYAN, GA 31008

ROBERT W. CASE
GEORGIA PE #202694