

1 ENLARGED RESTROOM FLOOR PLAN
Scale: 1/2"=1'-0"

WALL TILE INSTALLATION NOTES

- 1) INSTALL PINOT GOLD MEUNIER TILE, T-3, FROM TOP OF COVE BASE TO 4'-10" AFF. PROVIDE FOUR ROWS OF THE TILE AS THE CONTROL.
- 2) INSTALL MARDI GRAS CARNIVAL MOSAIC TILE, M-2, ABOVE FIELD TILE; ONE 12" ROW CUT TO 6" HEIGHT BEFORE INSTALLATION (6" BAND).
- 3) FLOAT MARDI GRAS CARNIVAL MOSAIC TILE, M-2, TO DEPTH OF PINOT GOLD MEUNIER TILE, T-3.
- 4) INSTALL ONE ROW OF THE BULL NOSE PINOT GOLD MEUNIER TILE, T-4, ABOVE TOP OF MARDI GRAS CARNIVAL MOSAIC.
- 5) SEAL ALL WALL TILE GROUT JOINTS WITH EPOXY GROUT.

HAND SINK ASSEMBLY:

HAND SINK
MANUF. KOHLER
MODEL: K-2035-8
COLOR: WHITE

FAUCET
MANUF. AMERICAN STANDARD
MODEL: 805B
FAUCET FINISH: POLISHED CHROME
TRAP SIZE: 1 1/4"

DRAIN BOOT
MANUF. PLUMBEREX TRAP GEAR
MODEL: 396W

ALL DIMENSIONS THIS SHEET ARE FROM FINISHES, U.N.O.

RESTROOM ACCESSORIES SCHEDULE

QUANTITY	ITEM
2	(R10) WALL MOUNTED MIRROR, CHANNEL FRAME 18"x36" - GAMCO C-18x36
2	(R20) SURFACE-MOUNTED DOOR BUMPER - BOBRICK B-6877
2	(R22) HEAVY DUTY CLOTHES HOOK - BOBRICK B-2116
2	(R40) ROLL TOILET TISSUE DISPENSER - BOBRICK B-2890
2	(R50) GRAB BAR, STRAIGHT, SNAP FLANGE, 36" - GAMCO 150-S x 36"
2	(R51) GRAB BAR, STRAIGHT, SNAP FLANGE, 42" - GAMCO 150-S x 42"
0	(R52) GRAB BAR, STRAIGHT, SNAP FLANGE, 18" - GAMCO 150-S x 18"
1	(R60) SANITARY NAPKIN DISPOSAL, SURFACE MOUNT - BOBRICK B-270
2	(N80) BABY CHANGING STATION, SURFACE MOUNT - KOALA KARE KB101-00
2	(N81) WALL MOUNT HAND SINK W/ CONCEALED BRACKET CARRIER, KOHLER, K-2035-8
2	(N82) RECESSED PAPER TOWEL DISPENSER AND WASTE RECEPTACLE, BOBRICK B-43944
2	(N83) RECESSED ELECTRIC HAND DRYER, BRUSHED STAINLESS STEEL - XLERATOR XL-SB
2	(N84) TOILET, FLOOR MOUNT, TANK TYPE - AMERICAN STANDARD 2467.016

ALL RESTROOM ACCESSORIES FURNISHED AND INSTALLED BY CONTRACTOR, EXCEPT SOAP DISPENSER.

SPECIFICATIONS:
DIVISION 10: SPECIALTIES

SECTION 10A: TOILET ACCESSORIES
GENERAL PROVISIONS

1. SCOPE: INSTALL TOILET PARTITIONS WHERE APPLICABLE, TOILET ACCESSORIES, AND RELATED HARDWARE AS SHOWN ON PLANS OR INSTALLATION DRAWINGS.
2. SUBMISSIONS: PROVIDE INSTALLATION DRAWINGS TO OWNER'S REPRESENTATIVE SHOWING THE SIZE AND LOCATION OF EACH COMPONENT AND ROUGH OPENING SIZES AND MOUNTING HEIGHTS. LABEL ALL COMPONENTS TO CORRESPOND TO INSTALLATION DRAWINGS FOR EASE OF INSTALLATION.

MATERIALS

1. DOORS FOR TOILET COMPARTMENTS WHERE APPLICABLE WITH STALL WALL. PARTITIONS SHALL BE 3/4" X 58" HIGH SET STALL DOORS WITH STANDARD HINGES #502 CATCH SLIDE SURFACE FINISH #5140 FOR OUTSWINGING DOORS, AND #5260 SURFACE STRIKES #5140 FOR IN-SWINGING DOORS. COAT HOOK WITH RUBBER BUMPER AT 48" O.C.
2. STALL DOOR HINGE JAMB: 1-1/4" X 1-1/4" X 8'-0" MILL FINISH ALUMINUM TUBE HINGE JAMB POST FOR TOILET STALL DOORS. PRE-DRILL FOR #12 SCREWS @ 8" O.C.
3. PANELIZED TOILET COMPARTMENTS & DOORS (WHEN SHOWN) SHALL BE MARLITE FLOOR-MOUNTED, OVERHEAD-BRACED TOILET PARTITIONS AND/OR FLOOR-MOUNTED, CEILING-BRACED URINAL SCREEN BY MARLITE WITH STAINLESS STEEL PILASTER SHOE COVERS. FINISH 927 FOLKSTONE (GRAY). MCP LAMINATE. DOORS TO HAVE COAT HOOK WITH RUBBER BUMPER.
4. ACCESSORIES REFER TO DRAWINGS.

PERFORMANCE

1. INSTALL PARTITIONS, ACCESSORIES, AND HARDWARE IN ACCORDANCE WITH MANUFACTURER'S RECOMMENDATIONS AND INSTALLATION DRAWINGS.

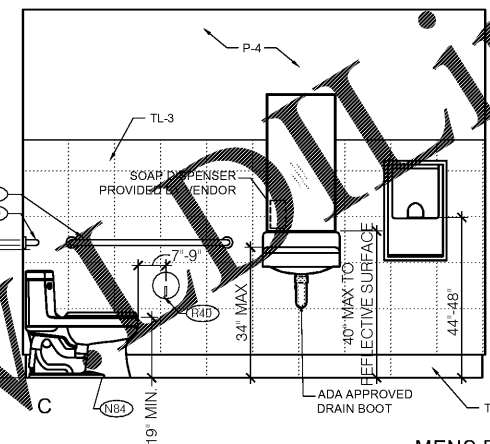
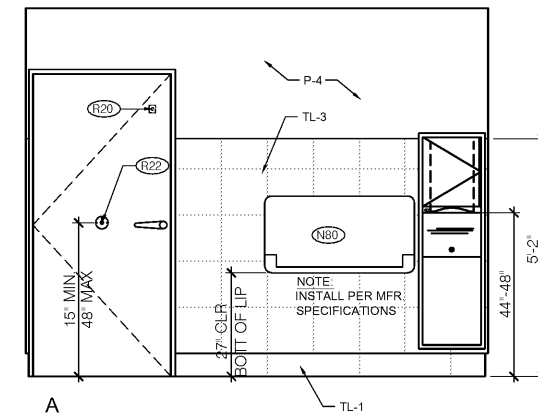
ACCESSIBILITY NOTES:

IBC-ACCESSIBILITY 2012 7TH EDITION, CH. 11
2010 ADA STANDARDS FOR ACCESSIBLE DESIGN
ANSI 117.1 SEE COVER SHEET FOR ADDITIONAL NOTES

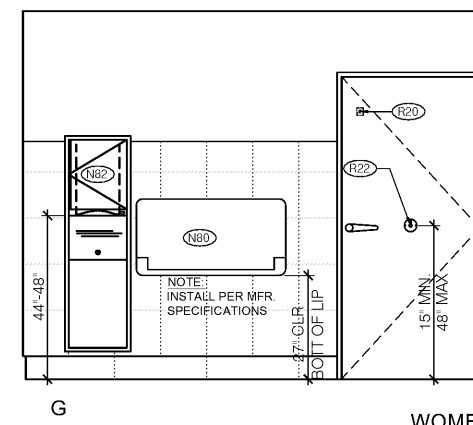
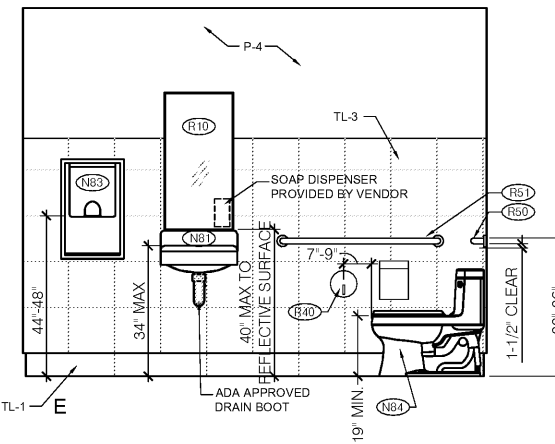
1. THE INTERNATIONAL SYMBOL OF ACCESSIBILITY SIGN SHALL BE DISPLAYED AT ALL ACCESSIBLE RESTROOM FACILITIES AND AT ALL ACCESSIBLE ENTRANCES UNLESS ALL ENTRANCES ARE ACCESSIBLE. INACCESSIBLE ENTRANCES SHALL HAVE DIRECTIONAL SIGNS INDICATING THE ROUTE TO THE NEAREST ACCESSIBLE ENTRANCE.
2. RECEPTACLES ON WALLS SHALL BE MOUNTED NO LESS THAN 15" ABOVE THE FLOOR. EXCEPTION: HEIGHT LIMITATIONS DO NOT APPLY WHERE THE USE OF SPECIAL EQUIPMENT DICTATES OTHERWISE OR WHERE ELECTRICAL RECEPTACLES ARE NOT NORMALLY INTENDED FOR USE BY BUILDING OCCUPANTS.
3. WHERE EMERGENCY WARNING SYSTEMS ARE PROVIDED, THEY SHALL INCLUDE BOTH AUDIBLE AND VISUAL ALARMS. THE VISUAL ALARMS SHALL BE LOCATED THROUGHOUT, INCLUDING RESTROOMS, AND PLACED 80" ABOVE THE FLOOR OR 6" BELOW CEILING, WHICHEVER IS LOWER.
4. DOORS TO ALL ACCESSIBLE SPACES SHALL HAVE ACCESSIBLE HARDWARE (i.e. LEVER-OPERATED, PUSH-TYPE, U-SHAPED) MOUNTED NO HIGHER THAN 48" ABOVE THE FLOOR.
5. FLOOR SURFACES SHALL BE STABLE, FIRM, AND SLIP-RESISTANT. CHANGES IN LEVEL BETWEEN 0.25" AND 0.5" SHALL BE BEVELED WITH A SLOPE NO GREATER THAN 1:2". CHANGES IN LEVEL GREATER THAN 0.5" REQUIRE RAMPS. CARPET PILE THICKNESS SHALL BE 0.5" MAX. GRATINGS IN FLOOR SHALL HAVE SPACES NO GREATER THAN 0.5" WIDE IN ONE DIRECTION. DOORWAY THRESHOLDS SHALL NOT EXCEED 0.5" IN HEIGHT. GRAB BARS REQUIRED FOR ACCESSIBILITY SHALL BE 1.25"-1.50" IN DIAMETER WITH 1.5" CLEAR SPACE BETWEEN THE BAR AND THE WALL.

6. ACCESSIBLE WATER CLOSETS SHALL BE 17"-19" FROM FLOOR TO THE TOP OF THE SEAT. GRAB BARS SHALL BE 36" LONG MINIMUM WHEN LOCATED BEHIND WATER CLOSET AND 42" MINIMUM WHEN LOCATED ALONG SIDE OF WATER CLOSET, AND SHALL BE MOUNTED 33"-36" ABOVE THE FLOOR.
7. ACCESSIBLE URINALS SHALL BE STALL-TYPE OR WALL HUNG WITH ELONGATED RIMS AT A MAXIMUM OF 17" ABOVE THE FLOOR.
8. ACCESSIBLE LAVATORIES SHALL BE MOUNTED WITH THE RIM NO HIGHER THAN 34" ABOVE THE FLOOR AND A CLEARANCE OF AT LEAST 29" ABOVE THE FLOOR TO THE BOTTOM OF THE APRON.
9. ACCESSIBLE SINKS SHALL BE MOUNTED WITH THE RIM NO HIGHER THAN 34" ABOVE THE FLOOR AND A CLEARANCE OF AT LEAST 27" HIGH, 30" WIDE, AND 19" DEEP UNDERNEATH SINK. THE SINK DEPTH SHALL BE 6.5" MAXIMUM.
10. HOT WATER AND DRAIN PIPES UNDER ACCESSIBLE LAVATORIES AND SINKS SHALL BE INSULATED OR OTHERWISE CONFIGURED TO PROTECT AGAINST CONTACT. THERE SHALL BE NO SHARP OR ABRASIVE SURFACES UNDER.
11. ACCESSIBLE LAVATORIES AND SINKS. ACCESSIBLE LAVATORIES AND SINKS SHALL HAVE ACCESSIBLE FAUCETS (i.e. LEVER-OPERATED, PUSH-TYPE, ELECTRONICALLY CONTROLLED.)
12. WHERE MIRRORS ARE PROVIDED IN RESTROOM, AT LEAST ONE SHALL BE PROVIDED WITH THE BOTTOM EDGE OF THE REFLECTIVE SURFACE NO HIGHER THAN 40" ABOVE THE FLOOR.

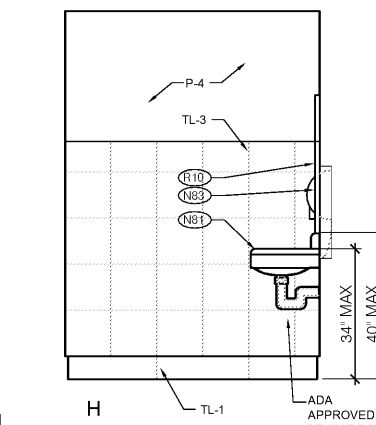
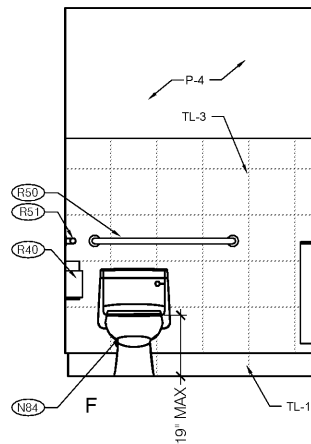
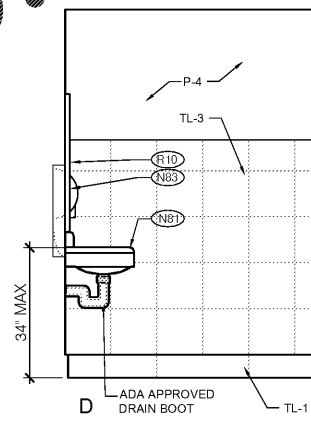
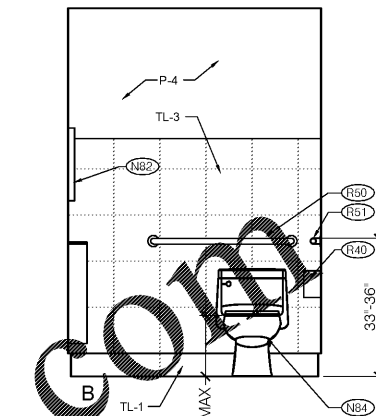
GENERAL NOTE:
1) SEE INTERIOR FINISH SCHEDULE (SHEET A2)



MENS RESTROOM



WOMENS RESTROOM



2 RESTROOM INTERIOR ELEVATIONS
Scale: 1/2"=1'-0"

Order Plans @ WWW.ONLINE.COM

LIS ARCHITECTURE ENGINEERING

2150 Palm Beach Blvd
Apt. TL 3050
Suite 2054, Orlando, FL 32705
Phone: (321) 983-8829
Facsimile: (321) 983-8829

LAND INVESTMENT SERVICES, LLC

CLIENT NAME: SOUTHEASTERN RETAIL DEVELOPMENT, LLC
PROJECT NAME: BLDG M-1, UNIT 231
2050 COUNTY ROAD 30A
SANTA ROSA BEACH, FL 32459

LOUISIANA POPEYES

POPEYES
PLK 1930-28-DL SAILORMEN
501 N HWY 49
BRYON, CA 91088

SHEET TITLE: ENLARGED RESTROOM PLAN & ELEVATIONS

HAROLD DANIEL HUTTER III
GEORGIA REG. RA015047

RELEASE	DATE
1	
2	
3	
4	
5	
6	

PROJECT NO: 2020-085

ISSUE DATE: 05/07/20

DRAWN: GM CHECKED: HDH

SHEET NO: A15
ENLARGED RESTROOM PLAN & ELEVATIONS