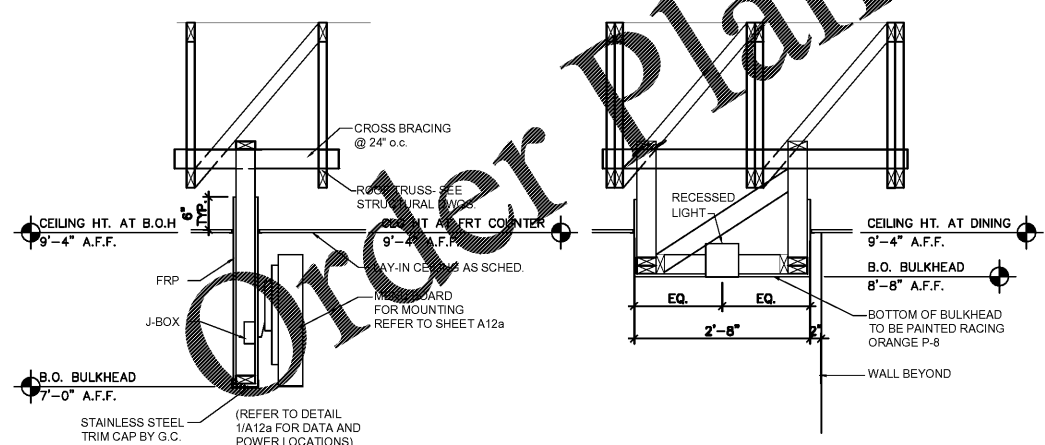


- *OFCI = OWNER FURNISHED CONTRACTOR INSTALLED
- GRID1 GRID SPECIFICATION
 - ACOUT TILE SPECIFICATION
 - 9'-4" CEILING HEIGHT AFF
 - BALCONY LIGHTING
 - EXTERIOR LIGHTING (GOOSENECK) OFCI, COORDINATE FINAL LOCATION WITH BUILDING ELEVATIONS
 - SOFFIT RECESSED BALCONY DOWNLIGHT SUPPLIED BY SIGN CONSULTANT
 - CEILING MOUNTED EMERGENCY LIGHT FIXTURE
 - WIPAK
 - CEILING MOUNTED EXIT SIGN / LIGHT COMBO
 - CEILING MOUNTED EXIT SIGN
 - EXTERIOR EMERGENCY LIGHTING
 - JUNCTION BOX
 - LL1 CYLINDRICAL PENDANT LIGHT COORDINATE FINISH LOCATION WITH SEATING PLAN, U.N.O.
 - LL2 CRABPOT PENDANT LIGHT COORDINATE FINISH LOCATION WITH SEATING PLAN, U.N.O.
 - LL3 MULTI-COLOR PENDANT LIGHT
 - RECESSED DOWNLIGHT
 - RECESSED SPOTLIGHT COORDINATE FINISH LOCATION WITH GRAPHIC
 - SPEAKER
 - 2x4 LED FIXTURE WITH STAINLESS STEEL TROFFER MOUNT NO LOWER THAN 8" HATCHING INDICATES EMERGENCY LIGHT FIXTURE (COORD. W/ ELECTRICAL)
 - 1x4 LED FIXTURE LIGHTING BY W.I.B. MANUFACTURER. ELECTRICAL INSTALLATION BY G.C., BULBS BY G.C.
 - MECHANICAL - RETURN AIR
 - MECHANICAL - SUPPLY
 - MECHANICAL - REGISTER
- HERMITAGE LIGHTING CONTACT INFORMATION:
 Wyatt Guiver
 Email: Wguiver@gohermitage.com
 Office: 615-843-3379

1 REFLECTED CEILING PLAN
 Scale: 1/4"=1'-0"



2 MENU BOARD AND SERVICE COUNTER LIGHTING SECTION DETAIL
 Scale: 3/4"=1'-0"

SPECIFICATIONS:

DIVISION 9 - FINISHES
 SECTION 9C - SUSPENDED CEILING
 1. SCOPE: FINISH AND INSTALL ACOUSTICAL TILE PANELS WITH SUSPENSION SYSTEM.
 2. PERFORMANCE: GRID SHALL BE INSTALLED AS SHOWN AND IN STRICT ACCORDANCE WITH MANUFACTURER'S INSTRUCTIONS. LEVEL ACCURATELY AND HANG FROM #9 GAGE ANNEALED WIRE NOT OVER 4" ON CENTERS. PROVIDE HOLD-DOWN CLIPS. COOPERATE IN FITTING AROUND AIR CONDITIONING AND VENTILATION OUTLETS.

REFLECTED CEILING PLAN NOTES:

DIMENSIONS:
 A. ALL DIMENSIONS ARE TO FINISH FACE U.N.O.

CEILING FINISHES:
 A. REFER TO FINISH SCHEDULE

SUSPENDED CEILING:
 A. ACOUSTICAL PANEL INSTALLATION: INSTALL ACOUSTICAL PANELS WITH EDGES IN CLOSE CONTACT WITH METAL SUPPORTS AND IN TRUE ALIGNMENT.
 B. ALLOWABLE VARIATIONS FROM FLAT AND LEVEL SURFACE: 1/8" IN 10'-0" MAX.
 C. ALLOWABLE VARIATIONS FROM PLUMB OF GRID MEMBERS: AS CAUSED BY ECCENTRIC LOADS, 2" MAX.
 D. INSTALL SYSTEM AFTER MAJOR CEILING WORK IS COMPLETE. COORDINATE LOCATIONS OF HANGERS WITH RELATED WORK.

LIGHTING:
 A. CONFIRM LIGHTING FIXTURE QUANTITIES WITH SUPPLIER.
 B. EMERGENCY AND NORMAL LIGHTING MARKED WITH 'NL' SUBSCRIPT SHALL OPERATE CONTINUOUSLY. PROVIDE UNSWITCHED HOT TO NORMAL AND EMERGENCY BALLAST.
 C. CONTRACTOR SHALL FIELD VERIFY CEILING TYPE AND PROVIDE PROPER MOUNTING HARDWARE.
 D. ALL LIGHT FIXTURES SHALL BE SUPPLIED WITH LAMPS.
 E. ELECTRICAL CONTRACTOR SHALL VERIFY AVAILABLE CIRCUITS IN ELECTRICAL PANELS AND REUSE EXISTING CIRCUITS AS AVAILABLE. COORDINATE CIRCUITING WITH SITE-ADAPT ENGINEER AFTER FIELD VERIFICATION OF PANEL LOADS.

GENERAL NOTES:

- 1) CEILING GRID SHALL BE SUPPORTED FROM STRUCTURAL MEMBERS ONLY. GRID SHALL NOT BE SUPPORTED FROM OTHER TRADES WORK.
- 2) COORDINATE GRID INSTALLATION WITH LOCATION OF MECHANICAL EQUIPMENT AS INDICATED ON SHEET M-1 AND E-1.
- 3) HANGER WIRES FOR GRID SHALL BE INSTALLED AT NOT MORE THAN 48" O.C. AND AT EACH CORNER OF LAY-IN LIGHT FIXTURES. SEE ELECTRICAL PLANS FOR FIXTURE LOCATIONS.
- 4) CEILING GRID SHOULD BE CENTERED AT DINING ROOM.

KEY NOTES:

- 1 2x2 CEILING TILES AND GRID
- 2 2x4 FOOD GRADE, WASHABLE CEILING TILES AND GRID
- 3 CONNECT MENU BOARD, CORD, W/OWNER
- 4 EMERGENCY LIGHT FIXTURE
- 5 GYP BOARD CEILING
- 6 NEW AWNING BY SIGN VENDOR
- 7 NEW EXTERIOR WALL MOUNTED GOOSENECK LIGHT FIXTURE. COORDINATE WITH BUILDING ELEVATIONS FOR LOCATION
- 8 NEW WALL MOUNTED EXTERIOR SIGNAGE PROVIDED BY SIGN VENDOR
- 9 NEW PENDANT LIGHT FIXTURE. COORDINATE FIXTURE TO CENTER OVER TABLES BELOW.
- 10 NEW DRIVE THRU CANOPY AND RAILING SYSTEM BY VENDOR
- 11 STAINLESS STEEL CEILING PANELS (20 GAGE) AT HOOD AREA
- 12 KITCHEN HOOD OPENING (COORDINATE WITH MECHANICAL DRAWINGS)

21630 Palm Beach Blvd
 Avon, FL 32000
 Phone: (386) 983-9829
 Facsimile: (386) 983-9829

**ARCHITECTURE
 ENGINEERING**

LIS
 LAND INVESTMENT SERVICES, LLC

CLIENT NAME: SOUTHEASTERN RETAIL DEVELOPMENT, LLC
 PROJECT NAME: BLDG M-1, UNIT Z31
 2050 COUNTY ROAD 30A
 SANTA ROSA BEACH, FL 32459

POPEYES
 PLK 1930-28-DL SAILORMEN
 501 N HWY 49
 BAYON, CA 91088

SHEET TITLE: REFLECTED CEILING PLAN

HAROLD DANIEL HUTTER III
 GEORGIA REG. RA015047

| RELEASE | DATE |
|---------|------|
| 1 | |
| 2 | |
| 3 | |
| 4 | |
| 5 | |
| 6 | |

PROJECT NO: 2020-085
 ISSUE DATE: 05/07/20

DRAWN: CM | CHECKED: HDH

SHEET NO: A3
 REFLECTED CEILING PLAN

LIS EXPRESSLY RESERVES ITS COPYRIGHT AND ALL OTHER PROPERTY RIGHTS TO THESE DOCUMENTS AND THEIR DESIGN. HENCE, THEY ARE NOT TO BE REPRODUCED.