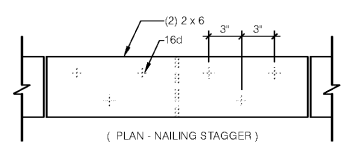
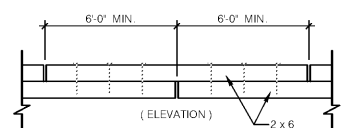
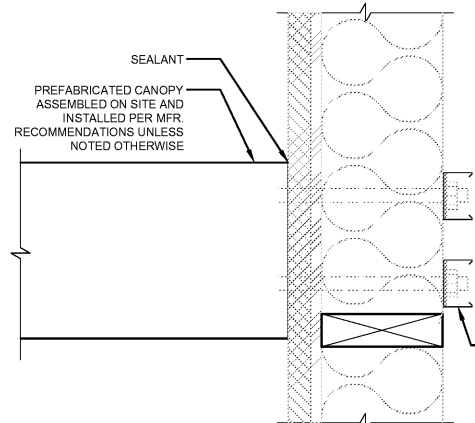


13 DETAIL AT D/T BALCONY
3'-1"-0"

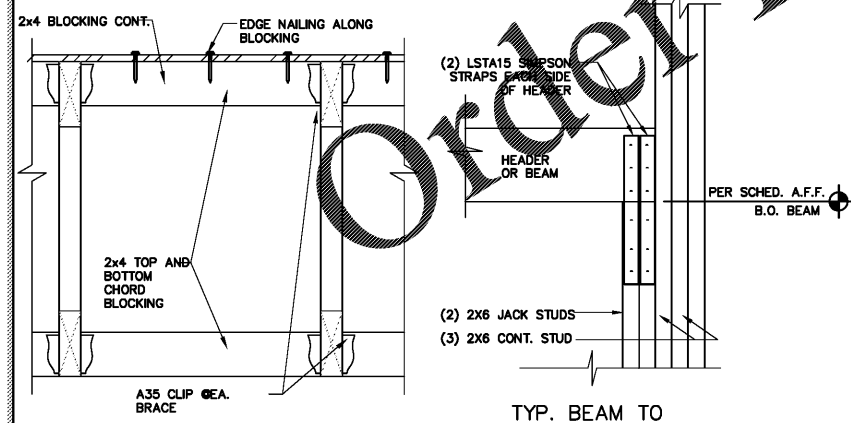


TYPICAL - ALL DOUBLE PLATE CONDITIONS - U.O.N.

12 PLATE LAP DETAIL
1'-0"-1'-0"



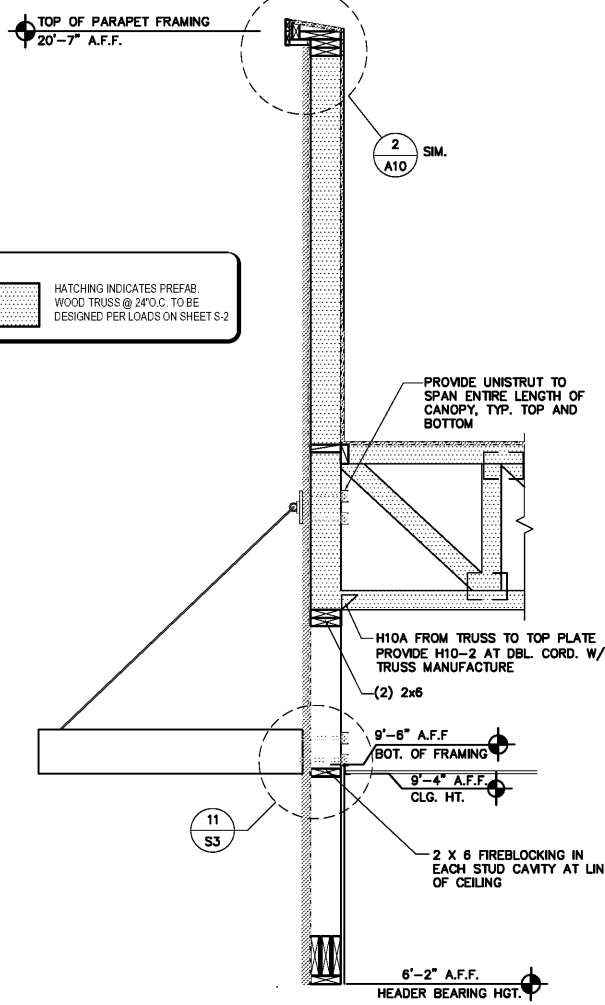
11 DETAIL AT D/T BALCONY
3'-1"-0"



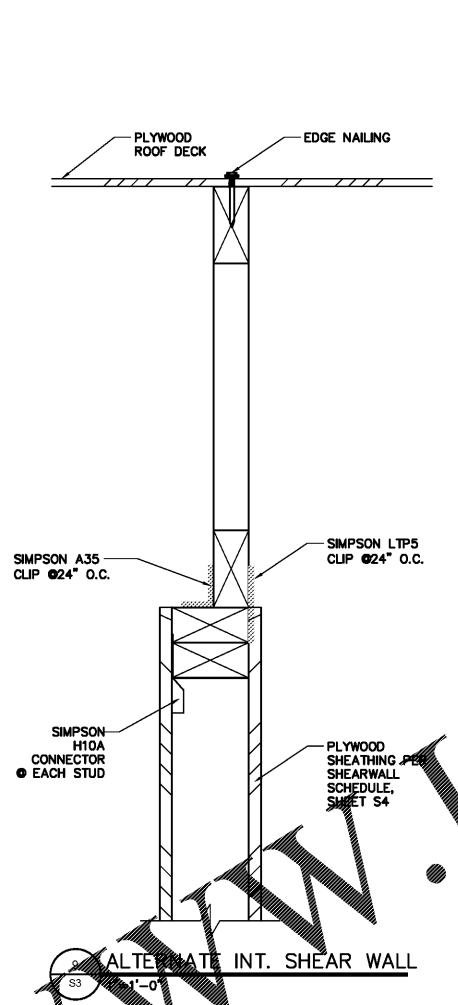
6 LATERAL BRACING DETAIL
1-1/2"-1'-0"

5 TYP. BEAM TO BEARING WALL CONN. @ LONG SPAN OPENINGS
1-1/2"-1'-0"

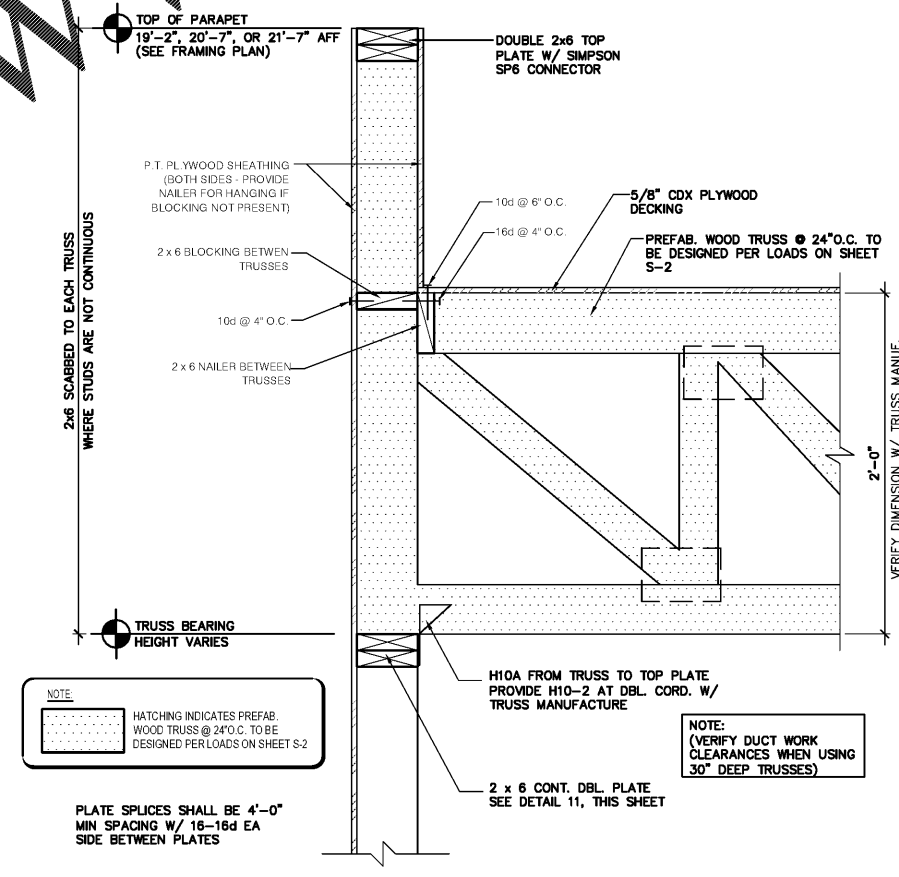
4 NOT USED
1'-1'-0"



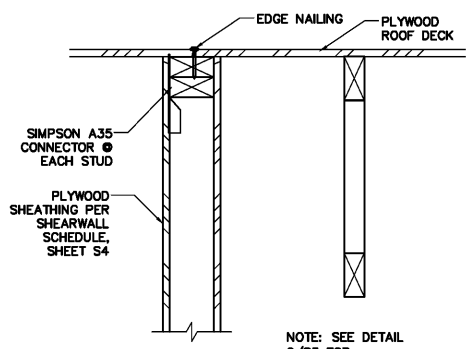
10 SECTION AT BALCONY
3/4"-1'-0"
(ROOF TRUSSES PERPENDICULAR TO WALL FRAMING)



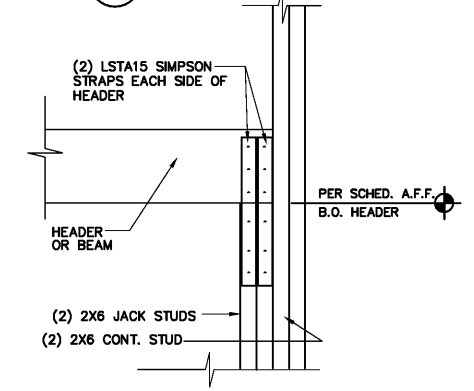
9 SECTION AT FRONT BUILDING WALL
1-1/2"-1'-0"
(ROOF TRUSSES PARALLEL TO WALL FRAMING)



3 TYP. ROOF TRUSS CONNECTION
1-1/2"-1'-0"
(ROOF TRUSSES PERPENDICULAR TO WALL FRAMING)



8 INTERIOR SHEAR WALL
3'-1'-0"



1 TYP. HEADER TO BEARING WALL CONN. AT SHORT SPAN OPENINGS
1-1/2"-1'-0"

LIS ARCHITECTURE ENGINEERING

SOUTHEASTERN RETAIL DEVELOPMENT, LLC
BLDG M-1, UNIT Z31
2050 COUNTY ROAD 30A
SANTA ROSA BEACH, FL 32459

POPEYES
PLK 1930-28-DL SAILORMEN
501 N HWY 49
BIRTON, GA 31008

STRUCTURAL DETAILS

ROBERT W. CASE
GEORGIA PE #020594

1	RELEASE	DATE
2		
3		
4		
5		
6		

PROJECT NO: 2020-085

ISSUE DATE: 05/07/20

DRAWN: GM | CHECKED: BC

SHEET NO: S3

STRUCTURAL DETAILS