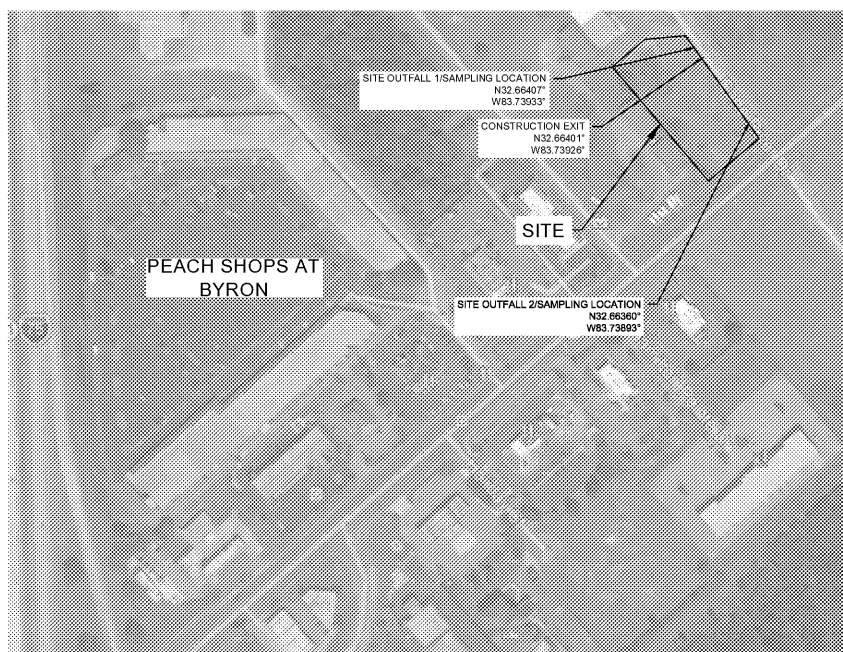


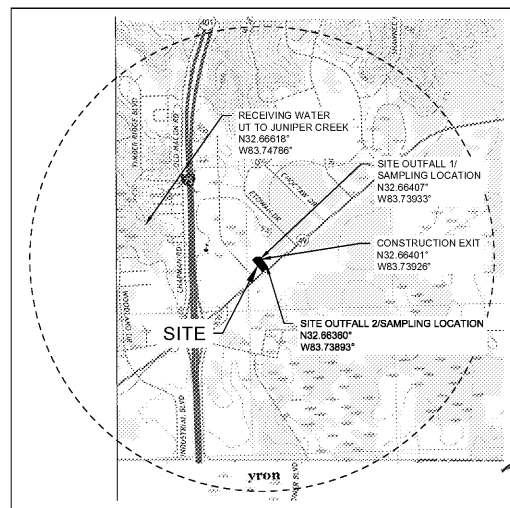
# EROSION, SEDIMENTATION, AND POLLUTION CONTROL PLAN

## FAST FOOD RESTAURANT

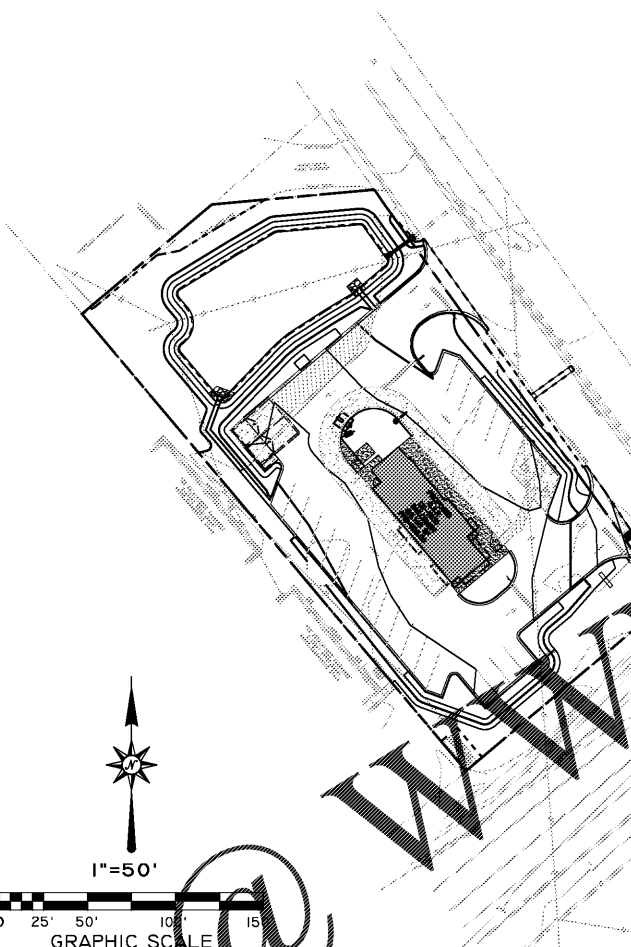
### BYRON, PEACH COUNTY, GEORGIA



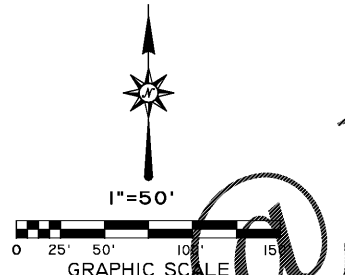
VICINITY MAP  
N.T.S.



USGS TOPO MAP  
N.T.S.



SITE PLAN  
N.T.S.



### GEORGIA UNIFORM CODING SYSTEM FOR SOIL EROSION AND SEDIMENT CONTROL PRACTICES

GEORGIA SOIL AND WATER CONSERVATION COMMISSION

STRUCTURAL PRACTICES				VEGETATIVE PRACTICES			
CODE	PRACTICE	DETAIL	DESCRIPTION	CODE	PRACTICE	DETAIL	DESCRIPTION
01	SEDIMENT BASIN		A small temporary basin to store sediment from erosion control practices.	01	VEGETATION		Planting vegetation on slopes that are erodible or exposed.
02	SEDIMENT TRAP		A small temporary basin to store sediment from erosion control practices.	02	VEGETATION		Planting vegetation on slopes that are erodible or exposed.
03	SEDIMENT TRAP		A small temporary basin to store sediment from erosion control practices.	03	VEGETATION		Planting vegetation on slopes that are erodible or exposed.
04	SEDIMENT TRAP		A small temporary basin to store sediment from erosion control practices.	04	VEGETATION		Planting vegetation on slopes that are erodible or exposed.
05	SEDIMENT TRAP		A small temporary basin to store sediment from erosion control practices.	05	VEGETATION		Planting vegetation on slopes that are erodible or exposed.
06	SEDIMENT TRAP		A small temporary basin to store sediment from erosion control practices.	06	VEGETATION		Planting vegetation on slopes that are erodible or exposed.
07	SEDIMENT TRAP		A small temporary basin to store sediment from erosion control practices.	07	VEGETATION		Planting vegetation on slopes that are erodible or exposed.
08	SEDIMENT TRAP		A small temporary basin to store sediment from erosion control practices.	08	VEGETATION		Planting vegetation on slopes that are erodible or exposed.
09	SEDIMENT TRAP		A small temporary basin to store sediment from erosion control practices.	09	VEGETATION		Planting vegetation on slopes that are erodible or exposed.
10	SEDIMENT TRAP		A small temporary basin to store sediment from erosion control practices.	10	VEGETATION		Planting vegetation on slopes that are erodible or exposed.
11	SEDIMENT TRAP		A small temporary basin to store sediment from erosion control practices.	11	VEGETATION		Planting vegetation on slopes that are erodible or exposed.
12	SEDIMENT TRAP		A small temporary basin to store sediment from erosion control practices.	12	VEGETATION		Planting vegetation on slopes that are erodible or exposed.
13	SEDIMENT TRAP		A small temporary basin to store sediment from erosion control practices.	13	VEGETATION		Planting vegetation on slopes that are erodible or exposed.
14	SEDIMENT TRAP		A small temporary basin to store sediment from erosion control practices.	14	VEGETATION		Planting vegetation on slopes that are erodible or exposed.
15	SEDIMENT TRAP		A small temporary basin to store sediment from erosion control practices.	15	VEGETATION		Planting vegetation on slopes that are erodible or exposed.
16	SEDIMENT TRAP		A small temporary basin to store sediment from erosion control practices.	16	VEGETATION		Planting vegetation on slopes that are erodible or exposed.
17	SEDIMENT TRAP		A small temporary basin to store sediment from erosion control practices.	17	VEGETATION		Planting vegetation on slopes that are erodible or exposed.
18	SEDIMENT TRAP		A small temporary basin to store sediment from erosion control practices.	18	VEGETATION		Planting vegetation on slopes that are erodible or exposed.
19	SEDIMENT TRAP		A small temporary basin to store sediment from erosion control practices.	19	VEGETATION		Planting vegetation on slopes that are erodible or exposed.
20	SEDIMENT TRAP		A small temporary basin to store sediment from erosion control practices.	20	VEGETATION		Planting vegetation on slopes that are erodible or exposed.

APPROXIMATE CONSTRUCTION SCHEDULE	MONTH 1	MONTH 2	MONTH 3	MONTH 4-12
SILT FENCE AND CONSTRUCTION EXIT	●	●	●	●
CLEAR, GRUBB & GRADING	●	●	●	●
UTILITIES	●	●	●	●
BUILDING CONSTRUCTION	●	●	●	●
PAVING	●	●	●	●
SEDIMENT TRAPS	●	●	●	●
TEMPORARY GRASSING	●	●	●	●
PERMANENT GRASSING	●	●	●	●
MAINTAIN EROSION CONTROL MEASURES	●	●	●	●
FINAL LANDSCAPING	●	●	●	●

**COMPREHENSIVE MONITORING PLAN (CMP)**  
 SITE AREA: 1.24 ACRES  
 ON-SITE DISTURBANCE AREA: 1.24 ACRES  
 OFF-SITE DISTURBANCE AREA: 0.00 ACRES  
 TOTAL DISTURBANCE AREA: 1.24 ACRES

**SAMPLING LOCATIONS:** SEE ES&PC PLANS  
**NAME OF RECEIVING WATERS:** UT TO JUNIPER CREEK  
**RECEIVING WATER USE:** FISHING  
**TYPE OF RECEIVING WATERS:** WARM WATER FISHERIES

**OWNER/DEVELOPER:** TRAVIS MEYER, 3048R BYRON, LLC, 2050 CR HWY 30A W, BLDG M-1 UNIT 228, SANTA ROSA BEACH, FL 32459, (850) 660-1917, TRAVISMEYER@SERDILLC.COM

**DESIGN PROFESSIONAL:** JAMES CAREY DANIEL, #000063346, GSWCC LEVEL II DESIGN PROFESSIONAL

**DESIGN PROFESSIONAL 7-DAY CERTIFICATION**

DATE OF INSPECTION: \_\_\_\_\_  
 I CERTIFY THE SITE WAS IN COMPLIANCE WITH THE ES&PC PLAN ON THE DATE OF INSPECTION.  
 JAMES C DANIEL, GSWCC LEVEL II CERTIFICATION # 000063346  
 INSPECTION REVEALED THE FOLLOWING DISCREPANCIES FROM THE ES&PC PLAN:  
 \_\_\_\_\_  
 THESE DISCREPANCIES MUST BE ADDRESSED IMMEDIATELY AND A RE-INSPECTION SCHEDULED. WORK SHALL NOT PROCEED ON THE SITE UNTIL DESIGN PROFESSIONAL CERTIFICATION IS OBTAINED.

THE INSTALLATION OF EROSION AND SEDIMENTATION CONTROL MEASURES AND PRACTICES SHALL OCCUR PRIOR TO OR CONCURRENT WITH LAND DISTURBING ACTIVITIES.

**STANDARD EROSION CONTROL NOTES:**

- NAME AND PHONE NUMBER OF THE 24-HOUR LOCAL CONTACT PERSON RESPONSIBLE FOR EROSION CONTROL EMERGENCIES IS:  
ATTN: TRAVIS MEYER, (850) 660-1917
- THE ESCAPE OF SEDIMENT FROM THE SITE SHALL BE PREVENTED BY THE INSTALLATION OF EROSION AND SEDIMENT CONTROL MEASURES AND PRACTICES PRIOR TO LAND DISTURBING ACTIVITIES.
- EROSION AND SEDIMENT CONTROL MEASURES AND PRACTICES WILL BE MAINTAINED AT ALL TIMES. IF FULL IMPLEMENTATION OF THE APPROVED PLAN DOES NOT PROVIDE FOR EFFECTIVE EROSION AND SEDIMENT CONTROL, ADDITIONAL EROSION AND SEDIMENT CONTROL MEASURES SHALL BE IMPLEMENTED TO CONTROL OR TREAT THE SEDIMENT SOURCE.**
- SEDIMENT STORAGE MAINTENANCE INDICATORS MUST BE INSTALLED IN SEDIMENT STORAGE STRUCTURES, INDICATING THE 1/3 FULL VOLUME.
- MAINTENANCE OF ALL SOIL EROSION AND SEDIMENTATION CONTROL MEASURES AND PRACTICES, WHETHER TEMPORARY OR PERMANENT, SHALL BE AT ALL TIMES THE RESPONSIBILITY OF THE PRIMARY PERMITTEE.
- THIS PROJECT DOES NOT PROPOSE ENCROACHMENT INTO STREAM BUFFERS. THERE ARE STREAM BUFFERS ON SITE.
- ANY DISTURBED AREA LEFT EXPOSED FOR A PERIOD GREATER THAN 14 DAYS SHALL BE STABILIZED WITH MULCH OR TEMPORARY SEEDING.**
- ALL FILL SLOPES SHALL HAVE SILT FENCE PLACED AT THE SLOPE'S TOE.
- CONCENTRATED FLOW AREAS AND ALL SLOPES STEEPER THAN 2.5:1 WITH A HORIZONTAL OF ONE FOOT OR GREATER SHALL BE STABILIZED WITH THE APPROPRIATE EROSION CONTROL MATING OR BLANKET.
- THE DESIGN PROFESSIONAL WHO PREPARED THE ES&PC PLAN, EXCEPT FOR THE PRIMARY PERMITTEE, HAS REQUESTED IN WRITING AND EPD HAS AGREED TO AN ALTERNATE DESIGN PROFESSIONAL IS TO BE APPOINTED FOR THE INSTALLATION OF THE INITIAL SEDIMENT STORAGE REQUIREMENTS AND PERIMETER CONTROL MEASURES WITHIN 7 DAYS AFTER INSTALLATION. THE DESIGN PROFESSIONAL SHALL DETERMINE IF THESE BMPs HAVE BEEN INSTALLED AND ARE BEING MAINTAINED AS DESIGNED. THE DESIGN PROFESSIONAL SHALL REPORT THE RESULTS OF THIS INSPECTION TO THE PRIMARY PERMITTEE WITHIN 7 DAYS AND THE PERMITTEE MUST CORRECT ALL DEFICIENCIES WITHIN BUSINESS DAYS OF RECEIPT OF THE INSPECTION REPORT FROM THE DESIGN PROFESSIONAL. WEATHER RELATED SITE CONDITIONS ARE SUCH THAT ADDITIONAL TIME IS REQUIRED. CONTRACTOR SHALL BE RESPONSIBLE FOR CONTACTING AND SCHEDULING INSPECTION.
- THE RECEIVING WATER(S) IS AN UN-NAMED TRIBUTARY TO JUNIPER CREEK.
- CONSTRUCTION WASTE MAY NEITHER BE BURNED NOR BURIED AND MUST BE TAKEN TO A STATE APPROVED LANDFILL.
- REMEDICATION OF ALL PETROLEUM SPILLS AND LEAKS ENCOUNTERED DURING DAILY INSPECTION SHALL BE MANAGED BY A QUALIFIED PROFESSIONAL.
- OFF-SITE VEHICLE TRACKING OF DIRT, SOILS AND SEDIMENTS AND THE GENERATION OF DUST SHALL BE MINIMIZED OR ELIMINATED TO THE MAXIMUM EXTENT PRACTICABLE.
- PERMITTEES SHALL DEMONSTRATE THAT THEIR PLAN IS IN COMPLIANCE WITH APPLICABLE STATE AND LOCAL WASTE DISPOSAL, ANTI-TIPPING, AND SEPTIC SYSTEM REGULATIONS.
- UPON NOTIFICATION AND AUTHORIZATION OF THE OWNER, THE DESIGN PROFESSIONAL WHO PREPARED THE ES&PC PLAN IS RESPONSIBLE FOR INSPECTING THE INSTALLATION OF THE BMP'S WITHIN 7 DAYS AFTER INITIAL CONSTRUCTION ACTIVITIES BEGIN.
- ANY AMENDMENTS OR REVISIONS TO THE ES&PC PLAN WHICH HAVE A SIGNIFICANT EFFECT ON BMP'S WITH A HYDRAULIC COMPONENT MUST BE CERTIFIED BY THE DESIGN PROFESSIONAL. REVISIONS OR AMENDMENTS SHOULD BE SUBMITTED TO THE LOCAL ISSUING AUTHORITY FOR REVIEW.
- THE ESCAPE OF SEDIMENT FROM THE SITE SHALL BE PREVENTED BY THE INSTALLATION OF EROSION AND SEDIMENT CONTROL MEASURES AND PRACTICES PRIOR TO LAND DISTURBING ACTIVITIES.**
- THERE ARE NO STATE WATERS OR WETLANDS ON SITE OR WITHIN 200' OF PROJECT.
- CONTRACTOR INSTALLING AND/OR MONITORING EROSION CONTROL MEASURES SHALL HAVE A VALID GSWCC LICENSE AND CERTIFICATION NUMBER.
- THE PROJECT WILL NOT DISCHARGE STORM WATER INTO AN IMPAIRED STREAM SEGMENT, OR WITHIN 1 LINEAR MILE UPSTREAM AND WITHIN THE SAME WATERSHED AS ANY PORTION OF AN IMPAIRED STREAM SEGMENT.
- NO IMPAIRED STREAM SEGMENT IS PRESENT AND NO TMDL IMPLEMENTATION PLAN FOR SEDIMENT IS AVAILABLE.
- NON-EXEMPT ACTIVITIES SHALL NOT BE CONDUCTED WITHIN THE 25- OR 50-FOOT UNDISTURBED STREAM BUFFER(S) AS MEASURED FROM THE POINT OF WRESTED VEGETATION WITHOUT FIRST ACQUIRING THE NECESSARY VARIANCES AND PERMITS. THERE ARE BUFFERS ON-SITE.**
- WASTE MATERIALS SHALL NOT BE DISCHARGED TO WATERS OF THE STATE, EXCEPT AS AUTHORIZED BY A SECTION 404 PERMIT.
- ALTERNATE BMP'S SHALL NOT BE USED UNLESS PRIOR APPROVAL IS GRANTED.

**NOTE:**  
 ALL PERSONS INVOLVED IN LAND DISTURBANCE ACTIVITIES MUST BE CERTIFIED IN EROSION AND SEDIMENT CONTROL BY THE GSWCC OR SUPERVISED BY SOMEONE WHO IS.

**DESIGN PROFESSIONAL'S CERTIFICATION:**

(1) I CERTIFY THAT THE PERMITTEE'S EROSION, SEDIMENTATION, AND POLLUTION CONTROL PLAN PROVIDES FOR AN APPROPRIATE AND COMPREHENSIVE SYSTEM OF BEST MANAGEMENT PRACTICES REQUIRED BY THE GEORGIA WATER QUALITY CONTROL ACT AND THE DOCUMENT "MANUAL FOR EROSION AND SEDIMENT CONTROL IN GEORGIA" (MANUAL) PUBLISHED BY THE STATE SOIL AND WATER CONSERVATION COMMISSION AS OF JANUARY 1 OF THE YEAR IN WHICH LAND DISTURBING ACTIVITY WAS PERMITTED, PROVIDES FOR THE SAMPLING OF THE RECEIVING WATER(S) OR THE SAMPLING OF THE STORM WATER, OUTFALLS, AND THAT THE DESIGNED SYSTEM OF BEST MANAGEMENT PRACTICES AND SAMPLING METHODS IS EXPECTED TO MEET THE REQUIREMENTS CONTAINED IN THE GENERAL NPDES PERMIT NO. GAR\_100001.

(2) "I CERTIFY UNDER PENALTY OF LAW THAT THIS PLAN WAS PREPARED AFTER A SITE VISIT TO THE LOCATIONS DESCRIBED HEREIN BY MYSELF OR MY AUTHORIZED AGENT, UNDER MY SUPERVISION."

(3) "I CERTIFY UNDER PENALTY OF LAW THAT THIS DOCUMENT AND ALL ATTACHMENTS WERE PREPARED UNDER MY DIRECTION OR SUPERVISION IN ACCORDANCE WITH A SYSTEM DESIGNED TO ASSURE THAT CERTIFIED PERSONNEL PROPERLY GATHER AND EVALUATE THE INFORMATION SUBMITTED. BASED UPON MY INQUIRY OF THE PERSON OR PERSONS WHO MANAGE THE SYSTEM, OR THOSE PERSONS DIRECTLY RESPONSIBLE FOR GATHERING THE INFORMATION, THE INFORMATION SUBMITTED IS, TO THE BEST OF MY KNOWLEDGE AND BELIEF, TRUE, ACCURATE, AND COMPLETE. I AM AWARE THAT THERE ARE SIGNIFICANT PENALTIES FOR SUBMITTING FALSE INFORMATION, INCLUDING THE POSSIBILITY OF FINE AND IMPRISONMENT FOR KNOWING VIOLATIONS."

JAMES CAREY DANIEL # 000063346  
 GSWCC LEVEL II DESIGN PROFESSIONAL CERTIFICATION #

**OWNER/OPERATOR'S CERTIFICATION:**

- "I CERTIFY, TO THE BEST OF MY KNOWLEDGE AND BELIEF, THAT THE EROSION, SEDIMENTATION AND POLLUTION CONTROL PLAN (PLAN) WAS PREPARED BY A DESIGN PROFESSIONAL WHO IS CERTIFIED BY THE GENERAL NPDES PERMIT NO. GAR100001, THAT IT HAS COMPLETED THE APPROPRIATE CERTIFICATION COURSE APPROVED BY THE GEORGIA SOIL AND WATER CONSERVATION COMMISSION IN ACCORDANCE WITH THE PROVISIONS OF O.C.G.A. 12-7-19 AND THAT I WILL ADHERE TO THE PLAN AND COMPLY WITH ALL REQUIREMENTS OF THIS PERMIT."
- "I CERTIFY THAT THE RECEIVING WATER(S) OR THE OUTFALL(S) OR A COMBINATION OF RECEIVING WATER(S) AND OUTFALL(S) WILL BE MONITORED IN ACCORDANCE WITH THE EROSION, SEDIMENTATION AND POLLUTION CONTROL PLAN."
- "I CERTIFY THAT THE EROSION, SEDIMENTATION AND POLLUTION CONTROL PLAN HAS BEEN PREPARED IN ACCORDANCE WITH PART IV OF THE GENERAL NPDES PERMIT GAR100001. THE PLAN WILL BE IMPLEMENTED AND THAT SUCH PLAN WILL PROVIDE FOR COMPLIANCE WITH THIS PERMIT."
- "I CERTIFY UNDER THE PENALTY OF LAW THAT THIS DOCUMENT AND ALL ATTACHMENTS WERE PREPARED UNDER MY DIRECTION OR SUPERVISION IN ACCORDANCE WITH A SYSTEM DESIGNED TO ASSURE THAT QUALIFIED PERSONNEL PROPERLY GATHER AND EVALUATE THE INFORMATION SUBMITTED. BASED UPON MY INQUIRY OF THE PERSON OR PERSONS WHO MANAGE THE SYSTEM, OR THOSE PERSONS DIRECTLY RESPONSIBLE FOR GATHERING THE INFORMATION, THE INFORMATION SUBMITTED IS, TO THE BEST OF MY KNOWLEDGE AND BELIEF, TRUE, ACCURATE, AND COMPLETE. I AM AWARE THAT THERE ARE SIGNIFICANT PENALTIES FOR SUBMITTING FALSE INFORMATION, INCLUDING THE POSSIBILITY OF FINE AND IMPRISONMENT FOR KNOWING VIOLATIONS."
- "I CERTIFY THAT THE APPLICABLE PORTIONS OF THE EROSION CONTROL PLANS WILL BE PROVIDED TO EACH SECONDARY PERMITTEE PRIOR TO THE SECONDARY PERMITTEE CONDUCTING ANY CONSTRUCTION ACTIVITY."
- "I CERTIFY THAT THE PERMITTEE'S EROSION, SEDIMENTATION AND POLLUTION CONTROL PLAN PROVIDES FOR AN APPROPRIATE AND COMPREHENSIVE SYSTEM OF BEST MANAGEMENT PRACTICES REQUIRED BY THE GEORGIA WATER QUALITY CONTROL ACT AND THE DOCUMENT "MANUAL FOR EROSION AND SEDIMENT CONTROL IN GEORGIA" (MANUAL) PUBLISHED BY THE STATE SOIL AND WATER CONSERVATION COMMISSION AS OF JANUARY 1 OF THE YEAR IN WHICH LAND DISTURBING ACTIVITY WAS PERMITTED. THE PLAN PROVIDES FOR THE SAMPLING OF THE RECEIVING WATER(S) OR THE SAMPLING OF THE STORM WATER OUTFALLS. THE DESIGNED SYSTEM OF BEST MANAGEMENT PRACTICES AND SAMPLING METHOD IS EXPECTED TO MEET THE REQUIREMENTS CONTAINED IN THE GENERAL NPDES PERMIT NO. GAR100001."

OWNER/OPERATOR'S SIGNATURE: \_\_\_\_\_ COMPANY: \_\_\_\_\_

**SCS NARRATIVE:**

FAST FOOD RESTAURANT  
 BYRON, PEACH COUNTY, GEORGIA

THE PROPOSED PROJECT LIES AT THE WEST CORNER OF THE INTERSECTION OF GEORGIA HWY 49 AND CANE RIVER DRIVE. THE PROJECT IS A PROPOSED FAST FOOD RESTAURANT WITH ASSOCIATED PARKING IMPROVEMENTS, GRADING, UTILITIES, PAVING, AND STORM DRAINAGE. THE SITE IS CURRENTLY A CLEARED FLAT LOT WITH A SELF-SERVE ICE KIOSK NEAR THE FRONT OF THE PROPERTY. EARTHWORK IS EXPECTED TO BALANCE CUT TO FILL. THE PROPOSED SITE WILL DRAIN INTO A PROPOSED DETENTION POND, WHICH DISCHARGES INTO A PUBLIC STORM DRAIN SYSTEM AND EVENTUALLY TRIBUTES TO AN UNNAMED TRIBUTARY TO JUNIPER CREEK. THE TRIBUTARY DRAINS INTO JUNIPER CREEK TO THE WEST OF THE SITE. THE TRIBUTARY IS NOT CLASSIFIED AS AN IMPAIRED WATERWAY BY THE GEORGIA ENVIRONMENTAL PROTECTION DIVISION.

NO ADVERSE IMPACTS ARE EXPECTED FROM THIS PROJECT.

SILT FENCE IS TO BE INSTALLED AS SHOWN AROUND THE PERIMETER OF THE LAND DISTURBANCE. A CONSTRUCTION EXIT OF CRUSHED STONE IS TO BE PROVIDED AT THE PROJECT ENTRANCE/EXIT FOR THE REMOVAL OF MUD FROM THE CONSTRUCTION VEHICLES LEAVING THE SITE. DUST CONTROL MEASURES ARE TO BE USED TO CONTROL SURFACE AND AIR MOVEMENT OF DUST ON SITE. A TEMPORARY SEDIMENT BASIN IS TO BE INSTALLED AT THE NORTH END OF THE SITE AND MAINTAINED THROUGHOUT CONSTRUCTION UNTIL PERMANENT STABILIZATION IS ACHIEVED. AT WHICH TIME THE TEMPORARY SEDIMENT BASIN IS TO BE CONVERTED TO A PERMANENT DETENTION POND. GEO-HAY INLET SEDIMENT TRAPS ARE TO BE INSTALLED AT ALL EXISTING INLETS BEFORE TOPS ARE REMOVED AND AFTER TOPS ARE INSTALLED IN PAVED AREAS. DISTURBED AREAS OF THE SITE ARE TO BE TEMPORARILY SEEDED, HYDRO-SEEDED, SODDED, AND STABILIZED AS SOON AS CONSTRUCTION PHASES PERMIT.

ALL POST-CONSTRUCTION STORMWATER WILL BE ROUTED TO A DETENTION POND DESIGNED TO RETAIN THE RUNOFF GENERATED BY THE FIRST 1" OF RAINFALL ON SITE AND DESIGNED TO DETAIN TO THE PRE-CONSTRUCTION RUNOFF FLOWS FOR THE 2-, 5-, 10-, 25-, AND 100-YEAR STORMS.

THE SITE WORK CONSTRUCTION IS TO BE COMPLETED IN STRICT ACCORDANCE WITH THE "MANUAL FOR EROSION AND SEDIMENTATION CONTROL IN GEORGIA". PERMANENT STABILIZATION WILL BE ACCOMPLISHED BY PLANTING COMMON BERBERIS. PERMANENT STABILIZATION IS ACHIEVED IN ACCORDANCE WITH CHAPTER 8, SECTION III "VEGETATIVE PRACTICES" OF THE MANUAL FOR EROSION AND SEDIMENTATION CONTROL IN GEORGIA. EROSION CONTROL DEVICES SHALL BE ROUTINELY INSPECTED AND MAINTAINED THROUGHOUT THE DURATION OF CONSTRUCTION.

VARIOUS BEST MANAGEMENT PRACTICES HAVE BEEN DESIGNED TO ENSURE THAT THE RELEASE OF SEDIMENT FROM THE SITE IS MINIMIZED.

**24-HOUR CONTACT**  
 TRAVIS MEYER  
 (205) 370-0362

NO.	REVISIONS	DESCRIPTION	DATE
0	ISSUED FOR PERMITTING		4/17/2020

**ES&PC COVER**

**FAST FOOD RESTAURANT**  
 GEORGIA HIGHWAY 49 & CANE RIVER DRIVE  
 BYRON, GEORGIA  
**30AIP BYRON, LLC**  
 SANTA ROSA BEACH, FLORIDA

DWN BY: M. SIMS, PE  
 CRD. BY: J. DANIEL, PE  
 SCALE: NTS  
 DATE: 4/17/2020

**GONZALEZ - STRENGTH & ASSOCIATES, INC.**  
 CIVIL ENGINEERING - TRANSPORTATION ENGINEERING - LAND SURVEYING  
 LAND PLANNING - LANDSCAPE ARCHITECTURE  
 1560 WOODS OF RIVERCHASE DRIVE SUITE 200  
 HOOPER, ALABAMA 35024  
 PHONE: (205) 945-5486  
 FAX: (205) 945-5028  
 www.Gonzalez-Strength.com

GSWCC LEVEL II # 000063346

**GEORGIA**  
 REGISTERED PROFESSIONAL ENGINEER  
 JAMES C. DANIEL  
 No. 14528  
 EXPIRES 12/31/2024

DWG. NO. C4.0  
 PROJECT 20-0135