

GENERAL NOTE:

1. ROOF IS CONSTRUCTED WITH LIGHT-FRAME TRUSS AS DEFINED BY F9633.027. SIGNAGE DESCRIBING ROOF ASSEMBLY SHALL BE POSTED IN ACCORDANCE WITH FLORIDA ADMINISTRATIVE CODE, 68A-60.061
2. FIRE PROTECTION DRAWINGS SHALL BE PROVIDED UNDER SEPARATE SUBMITTAL. HOOD SUPPRESSION SUBCONTRACTOR SHALL SUBMIT PLANS FOR EVALUATION AND APPROVAL PRIOR TO COMMENCEMENT OF NEW WORK IN ACCORDANCE WITH NFPA 96.

LIFE SAFETY LEGEND	
	ILLUMINATED EXIT/EMERGENCY SIGN
	MAX LENGTH OF EXIT ACCESS TRAVEL FROM THE MOST REMOTE POINT TO AN ENTRANCE/EXIT
	CLEAR EXIT WIDTH EGRESS CAPACITY (WIDTH / 0.2' LEVEL TRAVEL)
	REMOTE POINT
	WALL MOUNTED FIRE EXTINGUISHER (TYPE AS NOTED)

SPACE NAME	TYPE OF SPACE	AREA SF/LF	SF/ OCCUPANT	TOTAL
DINING ROOM OCCUPANCY				
DINING ROOM (BOOTH)	BENCH TYPE SEATS	3'-4" (5) + 7'-6" = 24'-2" LF	290' / 18" = 16.1 - 17 OCC.	17
DINING ROOM (TABLES & CHAIRS)	NON FIXED SEATS	131 SF	131 SF / 15 SF = 8.73 - 9 OCC.	9
SEATING COUNT (PROVIDED)				26
TOTAL DINING OCCUPANCY				26
UTILITY OCCUPANCY				
KITCHEN	KITCHEN	993 SF	100 GROSS (PER NFPA)	10
COOLER, FREEZER, MISC STORAGE	STORAGE	155 SF	300 NET SF	
RESTROOMS	RESTROOMS	111 SF	N/A	1
TOTAL UTILITY OCCUPANCY				11
TOTAL BUILDING OCCUPANCY	N/A	1,823 SF	N/A	30

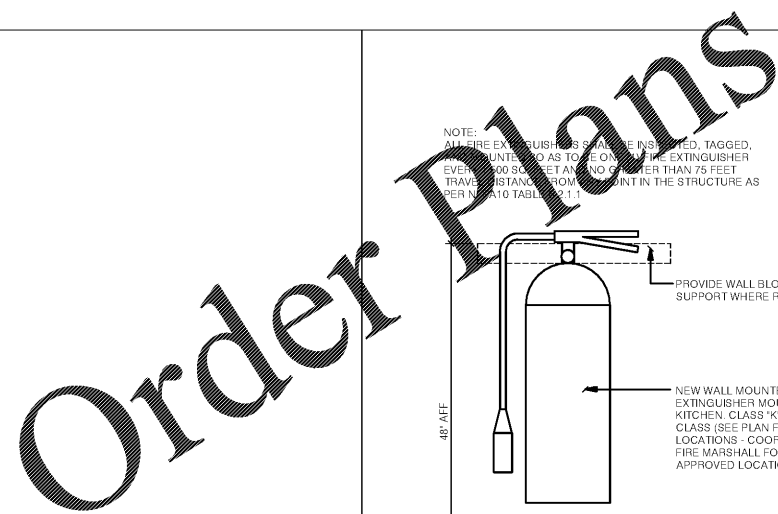
2 WHEEL CHAIR ACCESSIBLE SPACES (5% OF TOTAL)

CODE INFORMATION:

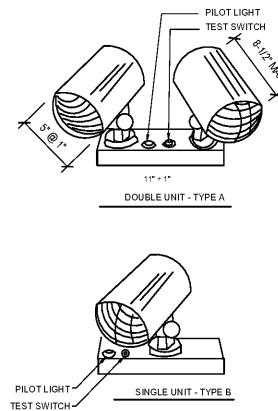
BUILDING CODE: 2012 INTERNATIONAL BUILDING CODE
 ACCESSIBILITY CODE: NFPA 101 AND 2012 IBC CH. 11 AND ICC/ANSI 117.1-1998
 FIRE CODE: 2012 INTERNATIONAL FIRE CODE
 PLUMBING CODE: 2012 INTERNATIONAL PLUMBING CODE
 MECHANICAL: 2012 INTERNATIONAL MECHANICAL CODE
 ELECTRICAL: 2017 NATIONAL ELECTRICAL CODE
 ENERGY: 2012 INTERNATIONAL ENERGY CONSERVATION CODE

OCCUPANCY CLASSIFICATION: ASSEMBLY A-2 (RESTAURANT)
 BUILDING OCCUPANT LOAD: 38 BASIS: (SEATING, EMPLOYEES)
 CONSTRUCTION CLASSIFICATION: TYPE V-B - UNPROTECTED, UNSPRINKLERED

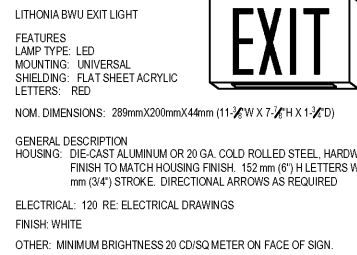
1 LIFE SAFETY PLAN
 Scale: 1/4"=1'-0"



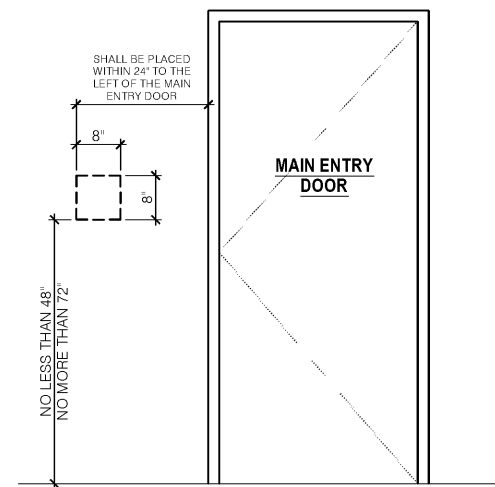
2 FIRE EXTINGUISHER ELEVATION



3 EMERGENCY LIGHTING FIXTURE
 Scale: NTS



4 EXIT SIGNAGE
 Scale: NTS



5 FIREFIGHTER SAFETY WARNING SIGN
 FOR STRUCTURES WITH LIGHT-FRAME TRUSS TYPE

LIS EXPRESSLY RESERVES ITS COPYRIGHT AND ALL OTHER PROPERTY RIGHTS TO THESE DOCUMENTS AND THEIR DESIGN. HENCE, THEY ARE NOT TO BE REPRODUCED.

PROJECT NAME: POPEYES
 PLK 1930-28-DL SAILORMEN
 501 N HWY 49
 BAYCON, CA 91088

CLIENT NAME: SOUTHEASTERN RETAIL DEVELOPMENT, LLC
 BLDG M-1, UNIT Z31
 2050 COUNTY ROAD 30A
 SANTA ROSA BEACH, FL 32459

ARCHITECT FIRM: LIS ARCHITECTURE ENGINEERING
 LAND INVESTMENT SERVICES, LLC
 2150 Palm Beach Blvd
 Avon, FL 32820
 Phone: (321) 983-8829
 Facsimile: (321) 983-8829

SHEET TITLE: LIFE SAFETY PLAN

HAROLD DANIEL HUTTER III
 GEORGIA REG. RA015047

RELEASE	DATE
1	
2	
3	
4	
5	
6	

PROJECT NO: 2020-085
 ISSUE DATE: 05/07/20
 DRAWN: GM | CHECKED: HDH
 SHEET NO: LS1
 LIFE SAFETY PLAN