

1 SYSTEMS FLOOR PLAN
E-7 SCALE 1/4" = 1'-0"

PLAN NOTES

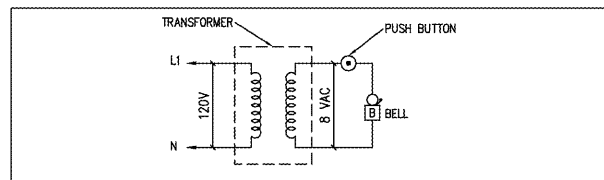
1. JUNCTION BOX FOR COUNTER MOUNTED MICROPHONE AT 18" A.F.F. IN CASEWORK WITH 3/4" CONDUIT BETWEEN JUNCTION BOXES AND THEN STUBBED UP INTO THE CEILING SPACE WITH PLASTIC BUSHING ON THE END.
2. JUNCTION BOX AS INDICATED WITH 3/4" CONDUIT STUBBED UP IN THE CEILING SPACE FOR THE OWNER PROVIDED OFFICE SATELLITE SYSTEM. PROVIDE A PLASTIC BUSHING ON THE END OF THE CONDUIT STUB-UP.
3. JUNCTION BOX ADJACENT TO RECEPTACLE. PROVIDE 3/4" CONDUIT STUBBED UP IN THE CEILING SPACE WITH PLASTIC BUSHING ON THE END. CABLE TO BE ROUTED TO THE MAIN JUNCTION BOX AT MANAGER'S DESK.
4. PROVIDE 3/4" CONDUIT BELOW GRADE FROM THE DRIVE-THRU COUNTER TO THE VEHICLE DETECTOR LOOP (FAST TRACK SYSTEM) AT THE PICK UP WINDOW. INSTALL PRIOR TO CONCRETE OR PAVING WORK.
5. COORDINATE LOCATION WITH ADJACENT HOOD ANSUL SYSTEM.
6. J-BOX AS INDICATED WITH 3/4" CONDUIT STUBBED INTO CEILING SPACE FOR CATS FROM TRAINING COMPUTER.
7. SEE ELEVATION OF WALL AT MANAGER'S DESK, THIS SHEET FOR OUTLET LOCATIONS.
8. TELEPHONE SERVICE BOX FURNISHED AND INSTALLED BY THE CONTRACTOR PER LOCAL TELEPHONE COMPANY REQUIREMENTS. PROVIDE A 2" CONDUIT STUBBED UP AT TTB TO TELEPHONE CONNECTION POINT. COORDINATE CONDUIT SIZE, EXACT LOCATION OF TELEPHONE POINT, AND ALL REQUIREMENTS WITH TELEPHONE COMPANY.
9. PROVIDE 1" CONDUIT WITH PULL WIRE FROM THE SECURITY SYSTEM BOX STUBBED UP INTO THE CEILING SPACE.
10. JUNCTION BOX FOR ROOFTOP UNIT'S THERMOSTAT SENSOR AT 66" A.F.F. WITH 1/2" CONDUIT STUBBED INTO THE CEILING SPACE.
11. JUNCTION BOX AS INDICATED WITH 1" CONDUIT STUBBED UP INTO THE CEILING SPACE WITH PLASTIC BUSHING ON END AT THE MANAGER'S DESK FOR CASH REGISTER SYSTEM CABLES.
12. MAIN DATA JUNCTION BOX AS INDICATED WITH 1" CONDUIT STUBBED UP INTO CEILING SPACE WITH PLASTIC BUSHING ON END FOR THE CATS CABLES WHICH ARE TO BE ROUTED TO THIS J-BOX.
13. JUNCTION BOX MOUNTED ABOVE PASS THRU OPENING (84") OR IN WALL WITH 2" CONDUIT STUBBED UP INTO THE CEILING SPACE FOR THE MONITOR'S COMMUNICATION CABLE(S) WHICH ARE TO BE ROUTED TO THE MAIN JUNCTION BOX AT THE MANAGER'S DESK.
14. PROVIDE TWO (2) 1" CONDUIT WITH PULL WIRE FROM THE DRIVE-THRU COUNTER BELOW GRADE TO THE SPEAKER PEDESTAL.
15. VEHICLE DETECTOR LOOP AT FAST TRACK DRIVE-THRU LANE. INSTALL PRIOR TO CONCRETE OR PAVING WORK. COORDINATE LOCATION WITH OWNER.
16. DRIVE-THRU MENU BOARD AND SPEAKER PEDESTAL SHOWN FOR REFERENCE ONLY. SEE SITE PLAN FOR EXACT LOCATION.

GENERAL NOTES

- A. E.C. TO INSTALL PULL STRING IN ALL CONDUITS TO ALLOW FOR RUNNING CABLES FOR CASH REGISTER SYSTEM.
- B. SEE SHEET E-4 FOR ELECTRICAL PANEL SCHEDULES.
- C. SEE SHEET E-8 FOR SPECIFICATIONS.

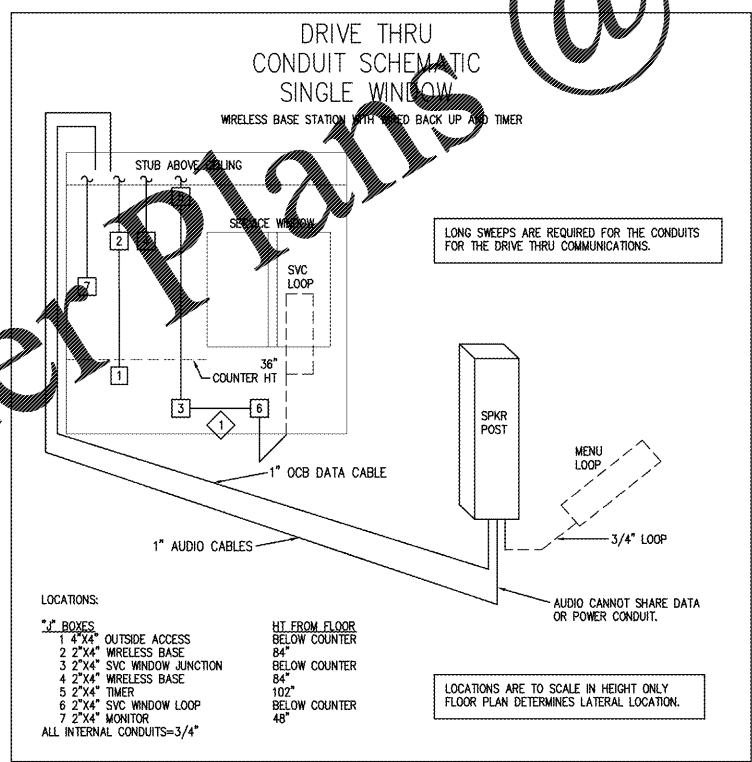
CASH REGISTER SYSTEM NOTES

- A. THE CONTRACTOR SHALL INSTALL ALL CASH REGISTER SYSTEM CABLES (CATS) FROM EACH OF THE TERMINAL, PRINTER, MONITOR, ETC. JUNCTION BOXES TO ABOVE THE CEILING AND TO THE MAIN JUNCTION BOX AT THE MANAGER'S DESK.
- B. PROVIDE 6'-0" OF SLACK AT EACH CABLE END AND LABEL EACH END OF CABLE WITH OWNERS DESIGNATED NOTATIONS.
- C. THE CABLE SHALL BE INSTALLED UP IN THE STRUCTURAL SYSTEM OR SUSPENDED WITH APPROVED HANGERS AND NOT LAYING ON THE SUSPENDED CEILING TILES.
- D. THE CASH REGISTER SYSTEM CABLES WILL BE PROVIDED TO THE CONTRACTOR BY THE SYSTEM'S VENDOR. COORDINATE INSTALLATION TIME WITH THE OWNER'S REPRESENTATIVE.



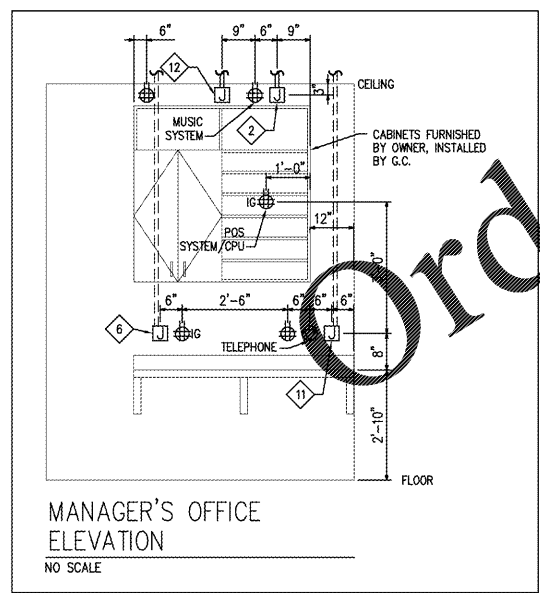
NOTE:
FRONT DOOR ANNUNCIATION SYSTEM SHALL CONSIST OF A WEATHERPROOF PUSHBUTTON INSTALLED AT FRONT ENTRANCE DOOR. ADJUSTABLE VOLUME BELL RATED AT 82 DB AT 3 FEET. 8 VOLT A/C TRANSFORMER WITH 10 VA MINIMUM CAPACITY AND WITH 120V PRIMARY ALL WIRED AS SHOWN BELOW. EQUIPMENT SHALL BE EDWARDS CATALOG NO. 55-6AM BY AC BELL; EDWARDS CATALOG NO. 852 FLUSH MOUNTED WEATHERPROOF PUSHBUTTON; AND EDWARDS CATALOG NO. 596 TRANSFORMER OR APPROVED EQUAL. SEE POWER FLOOR PLAN (E-3) FOR LOCATION.

DELIVERY DOOR ANNUNCIATOR DETAIL
NO SCALE



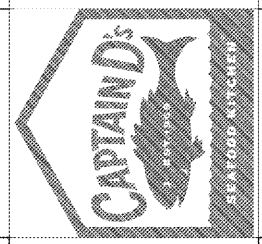
- LOCATIONS:**
- | | |
|-----------------------------|--------------------|
| 1 4"x4" OUTSIDE ACCESS | HIT FROM FLOOR |
| 2 2"x4" WIRELESS BASE | 84" BELOW COUNTER |
| 3 2"x4" SVC WINDOW JUNCTION | 84" BELOW COUNTER |
| 4 2"x4" WIRELESS BASE | 84" BELOW COUNTER |
| 5 2"x4" TIMER | 102" BELOW COUNTER |
| 6 2"x4" SVC WINDOW LOOP | 48" BELOW COUNTER |
| 7 2"x4" MONITOR | |
- ALL INTERNAL CONDUITS=3/4"

LOCATIONS ARE TO SCALE IN HEIGHT ONLY
FLOOR PLAN DETERMINES LATERAL LOCATION.



MANAGER'S OFFICE ELEVATION
NO SCALE

A NEW LOCATION FOR
CAPTAIN D'S
7525 STATE AVENUE
KANSAS CITY, KS 66112
CAPTAIN D'S, LLC
624 GRASSMERE PARK DRIVE,
SUITE 30
NASHVILLE, TN 37211



Job Number:

Revisions:

E-7
SYSTEMS FLOOR PLAN