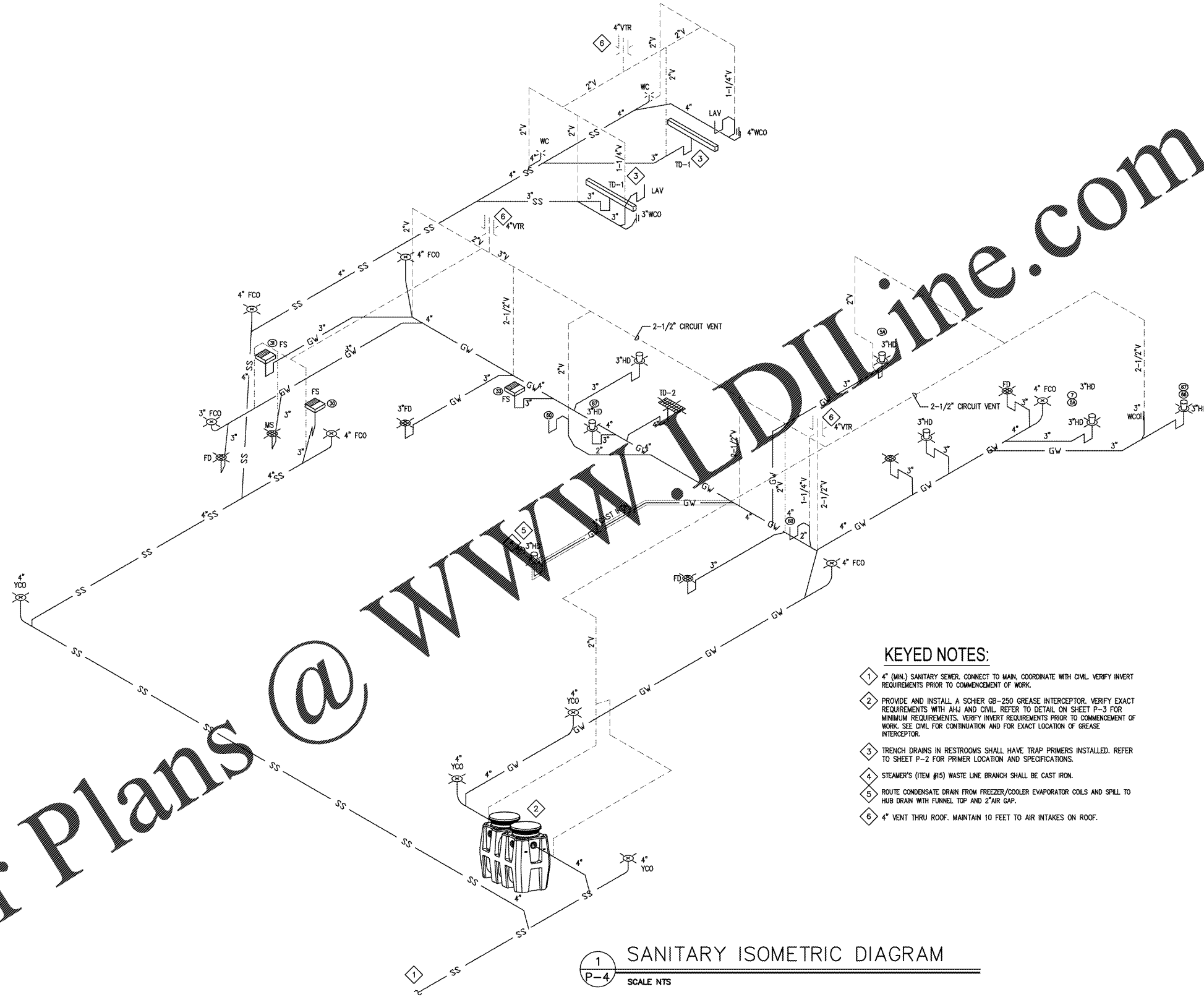


Order Plans @ www.DIline.com



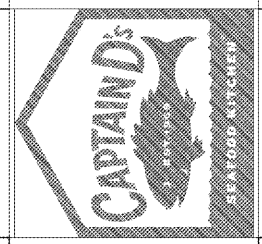
1 SANITARY ISOMETRIC DIAGRAM
P-4 SCALE NTS

KEYED NOTES:

- 1 4" (MIN.) SANITARY SEWER. CONNECT TO MAIN, COORDINATE WITH CIVIL. VERIFY INVERT REQUIREMENTS PRIOR TO COMMENCEMENT OF WORK.
- 2 PROVIDE AND INSTALL A SCHIER GB-250 GREASE INTERCEPTOR. VERIFY EXACT REQUIREMENTS WITH AHJ AND CIVIL. REFER TO DETAIL ON SHEET P-3 FOR MINIMUM REQUIREMENTS. VERIFY INVERT REQUIREMENTS PRIOR TO COMMENCEMENT OF WORK. SEE CIVIL FOR CONTINUATION AND FOR EXACT LOCATION OF GREASE INTERCEPTOR.
- 3 TRENCH DRAINS IN RESTROOMS SHALL HAVE TRAP PRIMERS INSTALLED. REFER TO SHEET P-2 FOR PRIMER LOCATION AND SPECIFICATIONS.
- 4 STEAMER'S (ITEM #15) WASTE LINE BRANCH SHALL BE CAST IRON.
- 5 ROUTE CONDENSATE DRAIN FROM FREEZER/COOLER EVAPORATOR COILS AND SPILL TO HUB DRAIN WITH FUNNEL TOP AND 2" AIR GAP.
- 6 4" VENT THRU ROOF. MAINTAIN 10 FEET TO AIR INTAKES ON ROOF.



A NEW LOCATION FOR
CAPTAIN D'S
 7525 STATE AVENUE
 KANSAS CITY, KS 66112
CAPTAIN D'S, LLC
 624 GRASSMERE PARK DRIVE,
 SUITE 30
 NASHVILLE, TN 37211



Job Number:
 Revisions:

P-4
 SANITARY ISOMETRIC