

WATER SERVICE CALCULATIONS:			
FIXTURE	QTY	F.U.	TOTAL
WATER CLOSET	2	2.5	5
LAVATORY	2	1	2
MOP SINK	1	3	3
1 COMP SINK	1	3	3
3-COMPARTMENT SINK	1	3	3
HAND SINK	3	2	6
DISHWASHER	1	4	4
ICE MACHINE	2	0.25	0.5
COFFEE BREWER	1	0.25	0.25
TEA BREWER	1	0.25	0.25
SODA MACHINE	2	0.25	0.5
SOUP REHEATING	1	0.25	0.25
HOSE BIBB	2	2.5	5
CARBONATOR	2	0.25	0.5
TOTAL:			33.25

33.25 WSFU = 25 GPM 1-1/2" SERVICE PIPE IS REQUIRED.

CROSS CONNECTION CONTROL SCHEDULE			
FIXTURE	MAKE	MODEL	ASSE, ASME OR ANS STANDARD
MOP SINK (FAUCET CONTAINS INTERGRAL BACKFLOW DEVICE)	WATTS & INTEGRAL	90W2-S	ASSE 1012
DISHWASHER	WATTS	LF008PCQT	ASSE 1056
ICE MAKER (ABOVE SODA)	AIR GAP	INTERNAL	ASSE A112.1.2
ICE MACHINE	AIR GAP	INTERNAL	ASSE A112.1.2
CARBONATOR	WATTS	SD-3	ASSE 1022
COFFEE BREWER	WATTS	SD-3	ASSE 1022
TEA BREWER	WATTS	SD-3	ASSE 1022
STEAMER	WATTS	LF007QT	ASSE 1015
CHEMICAL DISPENSER	WATTS	LF009 W/ AIR GAP FITTING LF909AGA	-
3-COMPARTMENT SINK	AIR GAP	-	ASSE A112.1.2
VEGETABLE PREP SINK	AIR GAP	-	ASSE A112.1.2
HAND SINKS	AIR GAP	-	ASSE A112.1.2
DROP-IN SINKS	AIR GAP	-	ASSE A112.1.2
LAVATORIES	AIR GAP	-	ASSE A112.1.2
WATER CLOSETS (TANK TYPE)	FILL VALVE	INTERNAL	ASSE 1002
WATER HEATER	WATTS	800MQT	ASSE 1020
BUILDING WATER SUPPLY BY LANDLORD	WATTS	LF009 M2-QT OR EQUAL	ASSE 1013

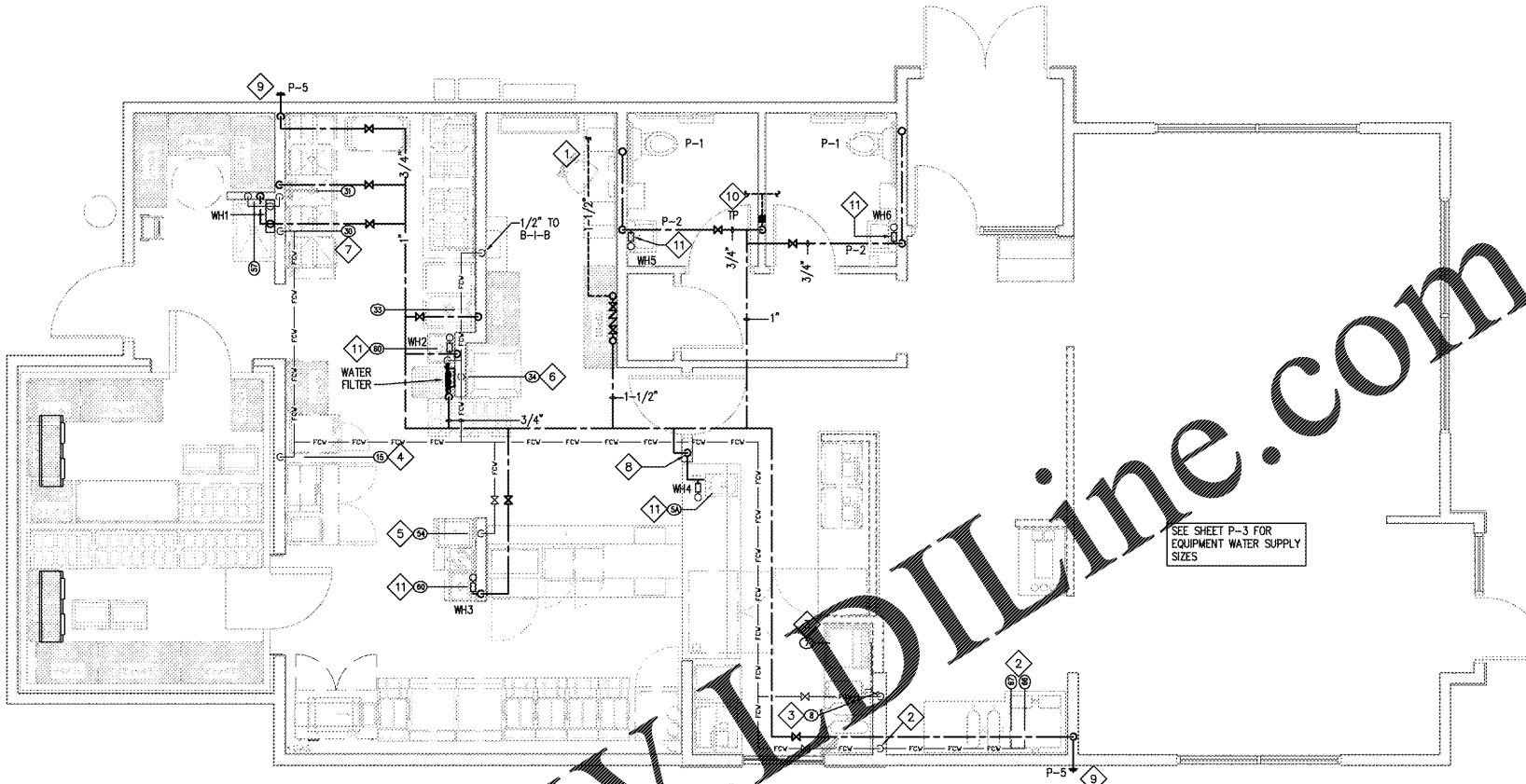
PROVIDE APPROPRIATE BACK FLOW PREVENTER AT OTHER EQUIPMENT AS REQUIRED BY CODE.

KEYED NOTES:

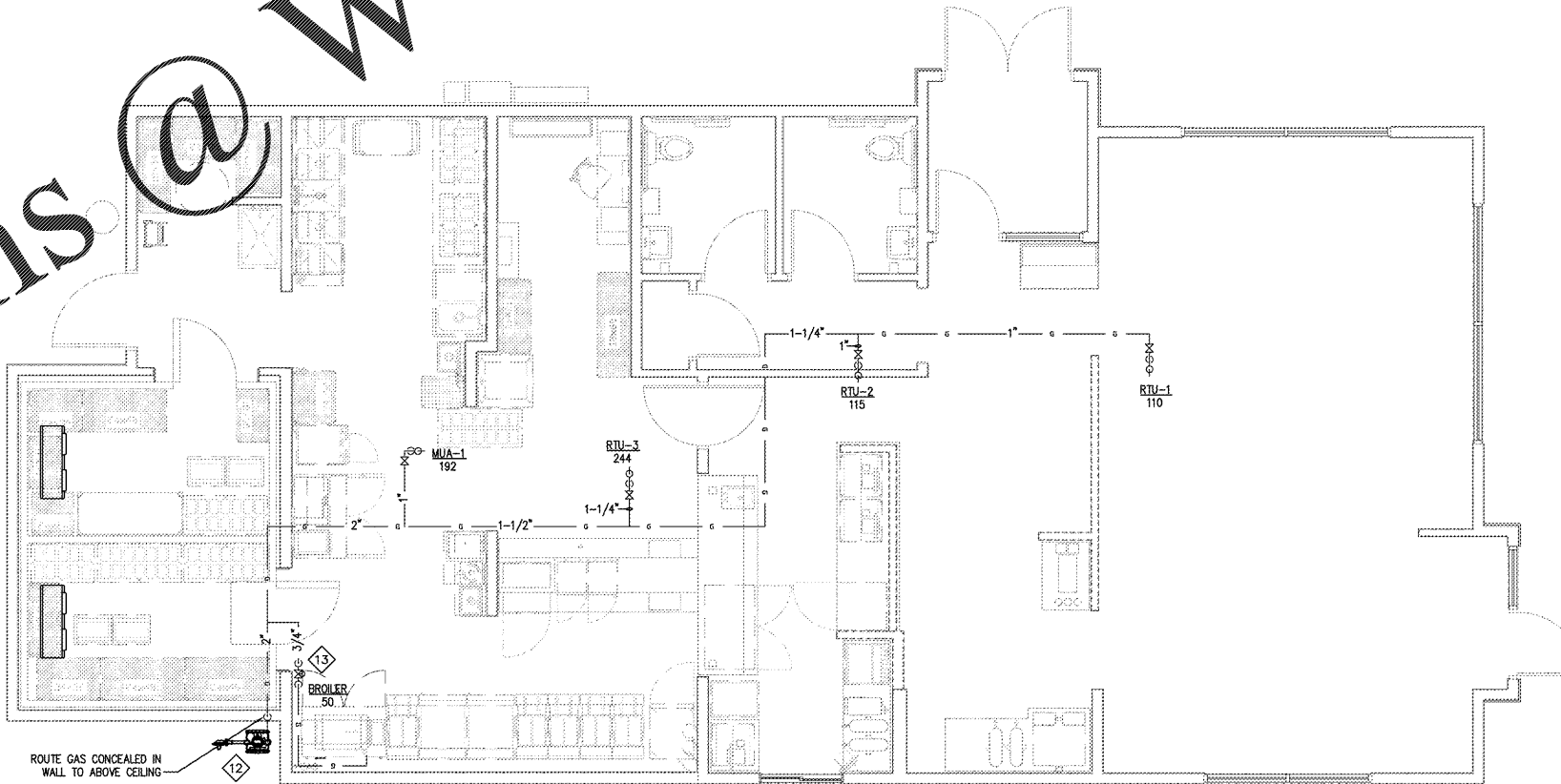
- 1 NEW 1-1/2" DOMESTIC CW WATER SERVICE TO BE ROUTED UNDER SLAB TO RPBP-1. BFD TO BE MOUNTED HORIZONTALLY ON WALL, COORDINATE EXACT LOCATION IN FIELD. REFER TO DETAIL ON SHEET P-3 FOR WATER SERVICE ENTRY. COORDINATE WITH CIVIL AND UTILITY COMPANY FOR LOCATIONS AND METER ASSIGNMENT. REMOVE THE BOTTOM SHELVES OF STORAGE RACK IN THIS AREA AND COORDINATE THEM OVER THE TOP OF BACKFLOW DEVICES.
- 2 DROP 3/4" FCW IN WALL AND ROUTE HORIZONTALLY UNDER COUNTERTOP TO SERVE DRINK HEAD (ITEM #66) & ICE MAKER (ITEM #67). PROVIDE 1/2" FCW @ 12" A.F.F. WITH STOP FOR ITEM #66 DRINK HEAD AND 1/2" FCW @ 12" A.F.F. WITH STOP BEFORE CONNECTION TO ICE MAKER. ITEM #67.
- 3 1/2" FCW DROP DOWN IN WALL FOR ITEM #8 AND #7. PROVIDE 1/4" FCW @ 48" A.F.F. WITH STOP FOR COFFEE/TEA BREWER (ITEM #8) AND 3/8" FCW @ 12" A.F.F. WITH STOP TO DRINK HEAD (ITEM #7). COORDINATE ROUTING THRU CASEWORK.
- 4 3/4" FCW @ 42" A.F.F. TO STEAMER (ITEM #15).
- 5 1/2" FCW @ 74" WITH STOP TO WATER DISPENSER/COOLER (ITEM #54).
- 6 3/4" FCW @ 60" WITH STOP BEFORE CONNECTION TO ICE MAKER (ITEM #34).
- 7 PROVIDE PRESSURE GAUGE WITH SHUT-OFF VALVE AT WATER CONNECTION TO DISHWASHER (ITEM #30).
- 8 1/2" CW DROP IN WALL AND ROUTE HORIZONTALLY BELOW COUNTERTOP TO ITEM #5A. STRAP/ANCHOR 2 LINES TO CASEWORK. COORDINATE WITH GC.
- 9 1/2" CW DROP IN WALL FOR FPHB. PROVIDE WITH ACCESSIBLE SOV ABOVE CEILING AND INSULATE PIPING WITHIN AN EXTERIOR WALL.
- 10 1/2" CW DROP IN WALL WITH TRAP PRIMER ITEM (TP) FOR TRENCH DRAIN(S) IN RESTROOMS.
- 11 PROVIDE POINT-OF-USE ELECTRIC TANKLESS WATER HEATERS. INSTALL PER MANUFACTURER'S GUIDELINES. SEE SCHEDULE ON SHEET P-3 FOR EXACT MODELS.
- 12 COORDINATE WITH CIVIL AND MAKE PROVISIONS WITH UTILITY COMPANY FOR A NEW NATURAL GAS SERVICE CONTRACTOR TO PROVIDE METER AND ALL ASSOCIATED VALVES. SERVICE SHALL BE ADEQUATE TO PROVIDE A MINIMUM OF 711 MBH. LINES SIZED ON PLANS ARE SHOWN AT LOW PRESSURE WITH A MAXIMUM RUN OF 100' FROM METER TO FURTHEST EQUIPMENT BEING SERVED. PROVIDE LOCAL SHUT OFF VALVE AND DIRT LEG FOR EACH PIECE OF EQUIPMENT.
- 13 PROVIDE AUTOMATIC GAS VALVE, BELOW CEILING, INTERLOCKED WITH KITCHEN HOOD EXTINGUISHING SYSTEM. (SEE HOOD SHOP DRAWINGS FOR METER INFORMATION.) PROVIDE LINE SIZE DROP TO LINE SIZE HORIZONTAL PIPE AT COOKING BATTERY AND CONNECT COOKING EQUIPMENT TO MANIFOLD. PROVIDE DIRT LEG AT BOTTOM OF PIPING DROP. VERIFY CONNECTIONS ON EACH PIECE OF KITCHEN EQUIPMENT. PROVIDE PRIV AT EACH CONNECTION NOT PROVIDED WITH AN EQUIPMENT SUPPLY VALVE.

GAS LINE CALCULATION	
EQUIPMENT	MBH
RTU-1	110
RTU-2	115
RTU-3	244
MUA-1	192
ITEM #18 BROILER	50
TOTAL MBH	711

GAS PIPING SIZED PER TABLE 402.4(2) PER THE INTERNATIONAL FUEL GAS CODE.
 MAXIMUM DISTANCE FROM THE METER TO FURTHEST FIXTURE = 100 FEET



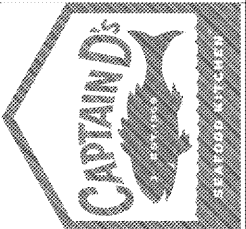
1 DOMESTIC WATER PLAN
 SCALE 1/4" = 1'-0"



2 NATURAL GAS PIPING PLAN
 SCALE 1/4" = 1'-0"



A NEW LOCATION FOR
CAPTAIN D'S
 7525 STATE AVENUE
 KANSAS CITY, KS 66112
CAPTAIN D'S, LLC
 624 GRASSMERE PARK DRIVE,
 SUITE 30
 NASHVILLE, TN 37211



Job Number:

Revisions:

P-2
 DOMESTIC WATER &
 GAS PIPING FLOOR
 PLAN