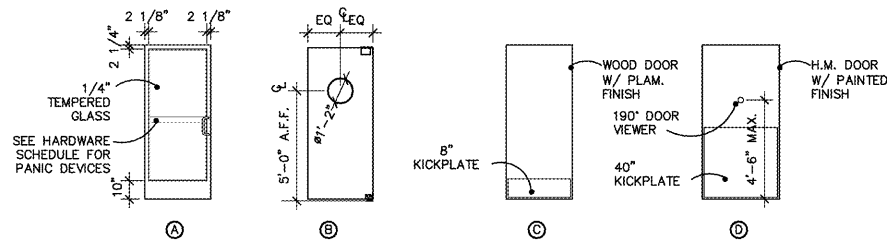


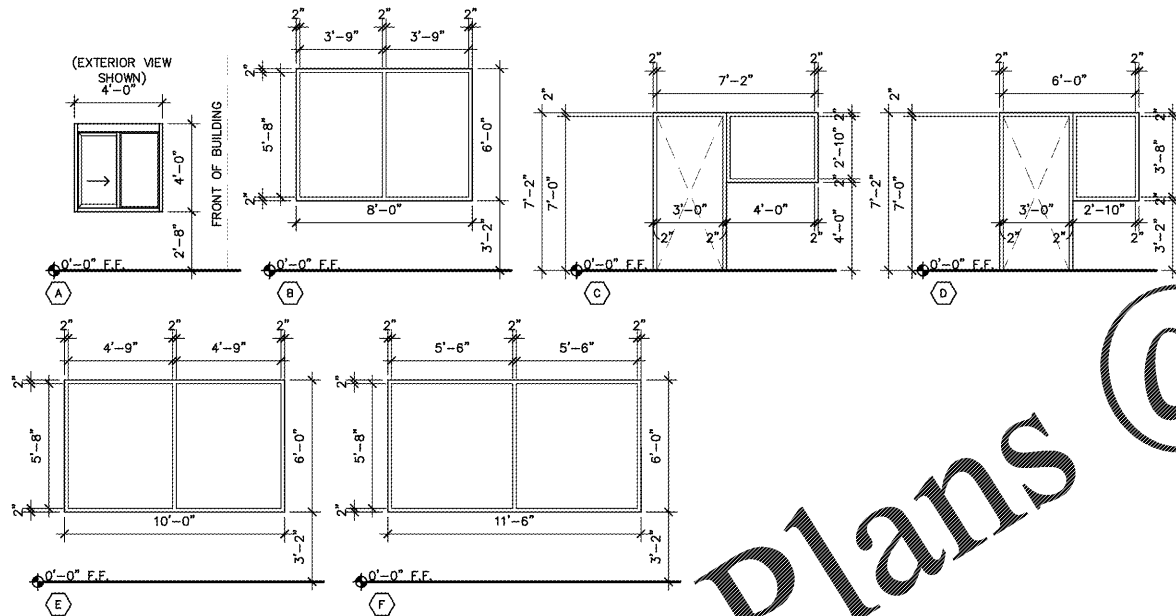
FRAME TYPES

- NOTES:
1. ALL HOLLOW METAL FRAMES TO BE CONT. WELDED AND GROUNDED.
 2. FRAMES SHALL MEET REQUIRED RATINGS SHOWN SPECIFIED AND REQUIRED BY GOVERNING AUTHORITIES.



DOOR TYPES

- NOTES:
1. ALL DOORS ARE TO BE 1 3/4" THICK UNLESS OTHERWISE NOTED.
 2. ALL ALUMINUM EXTERIOR DOORS TO MATCH CLEAR ANODIZED WINDOW MULLIONS.
 3. PAINT EXTERIOR HOLLOW METAL DOORS AND FRAMES P-1.
 4. SEE DOOR SCHEDULE FOR DIMENSIONS OF HEIGHTS AND WIDTHS.
 5. ALL EXTERIOR HOLLOW METAL DOORS TO BE INSULATED AND GALVANIZED.
 6. ALL HOLLOW METAL DOORS SHALL BE 16 GA. STEEL OF WELDED CONSTRUCTION.



WINDOW TYPES

- NOTES:
1. FIELD VERIFY ALL OPENINGS PRIOR TO FABRICATION.
 2. ALL WINDOWS ARE REQUIRED TO BE TEMPERED OR SAFETY GLASS.
 3. ALL EXTERIOR WINDOWS TO BE 1" INSULATED GLASS.

GENERAL NOTES:

1. ALL HARDWARE SHALL BE FURNISHED AND INSTALLED BY THE GENERAL CONTRACTOR UNLESS NOTED OTHERWISE.
2. HARDWARE ITEMS LISTED AS "BY KAWNEER" SHALL BE FURNISHED BY THE STOREFRONT MANUFACTURER. EQUIVALENT STOREFRONT MANUFACTURERS AND THEIR HARDWARE MAY BE ACCEPTABLE AS SPECIFIED IF PRE-APPROVED. PRE-APPROVED ALTERNATES ARE LISTED IN THE SPECIFICATIONS. MANUFACTURERS NOT LISTED MUST RECEIVE WRITTEN APPROVAL FROM CAPTAIN D'S CORPORATE CONSTRUCTION DEPARTMENT.
3. ALL HARDWARE FINISHES SHALL BE US26 UNLESS OTHERWISE NOTED.
4. ALL DOORS TO BE KEYPED TO THE SAME KEYPATTERN.
5. ALL LOCKS TO HAVE 6-PIN INTERCHANGEABLE KEYS. SUPPLIED AND INSTALLED BY THE GENERAL CONTRACTOR. ALL EXTERIOR DOORS TO BE PROVIDED WITH CONSTRUCTION CORES AND REPLACED WITH PERMANENT CORES SHIPPED OWNER OR FRANCHISEE BY FACILITY TURNOVER.
6. REFERENCE SPECIFICATION SECTION 08410 AND 08711.
7. ALL DOORS AND DOOR HARDWARE SHALL BE ADA COMPLIANT.
8. EXIT HARDWARE SHALL MEET OR EXCEED ALL FEDERAL, STATE, AND LOCAL CODES AND ORDINANCES.
9. ALL THRESHOLDS SHALL MEET OR EXCEED ADA REQUIREMENTS.
10. PAINT HOLLOW METAL FRAMES AND DOORS, WHERE SCHEDULED WITH 2 FINISH COATS OF HIGH GLOSS ACRYLIC ENAMEL. SEE ELEVATIONS AND FINISH SCHEDULE FOR MORE INFORMATION.
11. SEE RESPONSIBILITY MATRIX FOR RESPONSIBILITY OF MATERIALS AND/OR LABOR.
12. PROVIDE AND INSTALL SIGNAGE AS NOTED IN RESPONSIBILITY MATRIX.
13. ADJUST CLOSERS SUCH THAT SWEEP PERIOD FOR A DOOR IN AN OPEN POSITION OF 70 DEGREES SHALL TAKE AT LEAST 3 SECONDS TO MOVE TO A POINT 3" FROM THE LATCH MEASURED TO THE LEADING EDGE OF THE DOOR. MAXIMUM FORCE TO OPEN DOOR SHALL BE 5 LB.
14. ALL HARDWARE SHALL BE FURNISHED BY THE DOOR MANUFACTURER.

DOOR SCHEDULE													
NO.	SPACE NAME	DOOR SIZE	DOOR			FRAME						HWR SET	REMARKS
			TYPE	MAT.	FINISH	TYPE	MAT.	FINISH	HEAD DETAIL	JAMB DETAIL	SILL DETAIL		
1	ENTRY 101 (PAIR)	(2) 3'-0" X 7'-0" X 1 3/4"	A	ALUMINUM	CLEAR ANODIZED	A	ALUM	CLEAR ANODIZED	1/A-11.1	6/A-11.1	11/A-11.1	1	
2	ENTRY 101	3'-0" X 7'-0" X 1 3/4"	A	ALUMINUM	CLEAR ANODIZED	A	ALUM	CLEAR ANODIZED	2/A-11.1	7/A-11.1	11/A-11.1 SIM.	2	SET IN WINDOW TYPE "C"
3	DINING 102	3'-0" X 7'-0" X 1 3/4"	A	ALUMINUM	CLEAR ANODIZED	A	ALUM	CLEAR ANODIZED	1/A-11.1	6/A-11.1	11/A-11.1	1	SET IN WINDOW TYPE "D"
4	UTILITY 116	3'-6" X 7'-0" X 1 3/4"	D	HM	PAINT	A**	HM	P-1	4/A-11.1	9/A-11.1	14/A-11.1	4	
5	SERVING 104	3'-0" X 7'-0" X 1" ROUGH OPENING TO BE 38.5" X 85.25"	B *	COMPACT HIGH PRESSURE LAMINATE*	DESIGNER WHITE (D354-60)*	B*	HM	PRE-FINISHED FROM MANUF	13/A-11.1	13/A-11.1 SIM	---	*	FALCON SERIES MODEL 1 SINGLE OPENING WITH TRAFFIC DOOR NOTE: FRAME INCLUDED
6	WOMEN'S RESTROOM 10B	3'-0" X 7'-0" X 1 3/4"	C **	SOLID CORE WOOD	PLASTIC LAMINATE	A**	HM	P-1	3/A-11.1	8/A-11.1	---	5 **	FORMICA NATURAL BIRCH PLAM ON DOORS.
7	MEN'S RESTROOM 107	3'-0" X 7'-0" X 1 3/4"	C **	SOLID CORE WOOD	PLASTIC LAMINATE	A**	HM	P-1	3/A-11.1	8/A-11.1	---	5 **	FORMICA NATURAL BIRCH PLAM ON DOORS.
8	CLOSET 106	3'-0" X 7'-0" X 1 3/4"	C **	SOLID CORE WOOD	PLASTIC LAMINATE	A**	HM	P-1	3/A-11.1	8/A-11.1	---	3 **	FORMICA; NATURAL BIRCH PLAM ON DOORS.

NOTES:
1. REFER TO T-1.1 FOR VENDOR CONTACT INFORMATION, TYP.
*BY PHOENIX DOOR SYSTEMS
** BY THE THOMAS GROUP

WINDOW SCHEDULE								
NO.	SIZE (WIDTHxHEIGHT)	MATERIAL	GLAZING	HEAD DETAIL	JAMB DETAIL	SILL DETAIL	FINISH	REMARKS
A	4'-0" x 4'-0"	ALUMINUM	1/2" CLEAR INSULATED TEMPERED GLASS	16/A-11.1	---	17/A-11.1	CLEAR ANODIZED	QUICKSERV IFSC-4040 FIELD VERIFY ALL OPENINGS AND DIMENSIONS
B	8'-0" x 6'-0"	ALUMINUM	SOLAR BAN 60 (2) CLEAR+CLEAR. U-FACTOR: .29; SFGC: .39	5/A-11.1	10/A-11.1	15/A-11.1	CLEAR ANODIZED	FIELD VERIFY ALL OPENINGS AND DIMENSIONS
C	4'-0" x 3'-2"	ALUMINUM	SOLAR BAN 60 (2) CLEAR+CLEAR. U-FACTOR: .29; SFGC: .39	5/A-11.1	10/A-11.1	15/A-11.1	CLEAR ANODIZED	INSTALLATION PER MANUFACTURER SPECS. SEE COMCHECK REGARDING U-FACTOR AND SHGC MINIMUMS.
D	3'-0" x 4'-0"	ALUMINUM	SOLAR BAN 60 (2) CLEAR+CLEAR. U-FACTOR: .29; SFGC: .39	5/A-11.1	10/A-11.1	15/A-11.1	CLEAR ANODIZED	
E	10'-0" x 6'-0"	ALUMINUM	SOLAR BAN 60 (2) CLEAR+CLEAR. U-FACTOR: .29; SFGC: .39	5/A-11.1	10/A-11.1	15/A-11.1	CLEAR ANODIZED	
F	11'-6" x 6'-0"	ALUMINUM	SOLAR BAN 60 (2) CLEAR+CLEAR. U-FACTOR: .29; SFGC: .39	5/A-11.1	10/A-11.1	15/A-11.1	CLEAR ANODIZED	

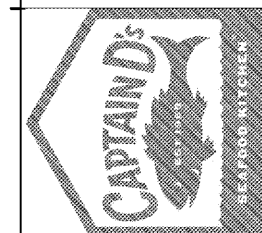
HARDWARE SCHEDULE					
SET	QTY PER DOOR	PRODUCT	MANUF.	MODEL NO.	REMARKS
2	2	SINGLE ACTING TOP & BOTTOM, OFFSET PIVOTS	KAWNEER	---	
1	1	DEADLOCK	ADAMS RITE	1850 SERIES TO BE COMPATIBLE W/ PANIC DEVICE	
1	1	CONCEALED ROD PANIC HARDWARE AT DOUBLE DOOR, OR RIM PANIC AT SINGLE DOOR	KAWNEER	PROVIDE (2) PANIC DEVICES AT DOUBLE DOOR LOCATION	FURNISHED & INSTALLED BY ALUMINUM STOREFRONT CONTRACTOR
2	2	COB PULL	KAWNEER	---	
2	2	CLOSER	YALE	54	
1	1	THRESHOLD	KAWNEER	69-143	
2	1	SINGLE ACTING TOP & BOTTOM, OFFSET PIVOTS	KAWNEER	---	FURNISHED & INSTALLED BY ALUMINUM STOREFRONT CONTRACTOR
1	1	CP II PUSH BAR	KAWNEER	---	NOTE: DO NOT INSTALL THUMB TURN LOCK OR KEYPED LOCK AT THIS LOCATION
1	1	COB PULL	KAWNEER	---	
1	1	CLOSER	NORTON	1604BC	
3	1-1/2 PAIR	HINGES	McKINNEY	TA2714 4 1/2 x 4 1/2 26D	---
1	1	KEYED LOCK SET	DESIGN HDWR	X82-F-26D 2 3/4" x ASA	---
1	1	KICK PLATE	ROCKWOOD	8" x 22" x 32D	---
1	1	HINGE PIN DOOR STOP	ROCKWOOD	528 NP	---
3	3	SILENCERS	NORTON	608	---

HARDWARE SCHEDULE (CONT.)					
SET	QTY PER DOOR	PRODUCT	MANUF.	MODEL NO.	REMARKS
4	1-1/2 PAIR	HEAVY WEIGHT HINGES	McKINNEY	TA43786 4 1/2 x 4 1/2 26D NRP	---
1	1	REINFORCEMENT PIVOT	BOOMER	1923F2C x RH	---
1	1	EXIT ALARM	ALARM LOCK	700 x US28 x 4"	PREP FRAME TO RECEIVE PANIC HARDWARE
1	1	RIM CYLINDER	DESIGN HARDWARE	308 x 26D "10" CORE	---
1	1	DOOR CLOSER	NORTON/DESIGN HDWR	1605BC x ALUM	---
1	1	PULL PLATE	ROCKWOOD	106 x 70B x 32D	LOCATE PULL ON INSIDE OF DOOR
1	1	DOOR VIEWER	ROCKWOOD	622 DCRM	---
1	1	KICK PLATE	ROCKWOOD	40" 630	---
1	1	CANE BOLT	---	L250 ZN 24"	---
1	1	THRESHOLD	NATIONAL GUARD PRODUCTS	425 48"	---
1	1	WEATHER-STRIPPING	NATIONAL GUARD PRODUCTS	160V 4884	---
1	1	DOOR SWEEP	NATIONAL GUARD PRODUCTS	200NA x 48"	---
3	3	SILENCERS	NORTON	608	---
5	1-1/2 PAIR	HINGES	McKINNEY	TA2714 4 1/2 x 4 1/2 26D	---
1	1	PASSAGE SET	DESIGN HDWR	X75-F-26D 2 3/4" x ASA	---
1	1	OCCUPANCY INDICATOR	SCHLAGE	B571 626	---
1	1	DOOR CLOSER	NORTON/DESIGN HDWR	316 x ALUM x SNB	---
1	1	KICK PLATE	ROCKWOOD	8" x 22" x 32D	---
1	1	HINGE PIN DOOR STOP	ROCKWOOD	528 NP	---
3	3	SILENCERS	NORTON	608	---

NOTES:
1. REFER TO T-1.1 FOR VENDOR CONTACT INFORMATION, TYP.



A NEW LOCATION FOR
CAPTAIN D'S
 7525 STATE AVENUE
 KANSAS CITY, KS 66112
CAPTAIN D'S, LLC
 624 GRASSMERE PARK DRIVE,
 SUITE 30
 NASHVILLE, TN 37211



Job Number: _____
 Revisions: _____

A-11.0
 DOOR & WINDOW SCHEDULES