

ACCESSIBILITY LEGEND	
	TRAVEL DISTANCE
	PATH OF EGRESS
	ACCESSIBLE SEATING

- ### GENERAL NOTES
- SEE ELECTRICAL SHEETS FOR EXACT LIGHT TYPE/MODEL.
  - G. C. TO VERIFY QUANTITY & LOCATIONS OF FIRE EXTINGUISHERS WITH LOCAL AUTHORITIES. G.C. TO SUPPLY ANY ADDITIONAL FIRE EXTINGUISHERS IF REQUIRED.
  - SEE DIMENSION PLAN FOR WALL TYPES AND LOCATIONS.
  - A SIGN STATING THE OCCUPANT LOAD OF THE BUILDING SHALL BE POSTED IN A CONSPICUOUS PLACE NEAR THE MAIN ENTRY. G.C. TO PROVIDE AND INSTALL OCCUPANT LOAD SIGN. G.C. TO VERIFY WITH LOCAL AUTHORITIES FOR LOCATION OF SIGN.
  - IF REQUIRED, G.C. TO PROVIDE FIRE DEPARTMENT REQUIRED KEY BOX. COORDINATE LOCATION AND TYPE WITH LOCAL AUTHORITIES.
  - IF REQUIRED, G.C. TO VERIFY LOCATION, SIZE, AND TYPE OF ADDRESS NUMBERS FOR BUILDING WITH LOCAL AUTHORITIES. LETTERS TO BE SUPPLIED BY G.C.
  - IF REQUIRED, G.C. TO PROVIDE AND COORDINATE PLACEMENT OF "THIS DOOR TO REMAIN UNLOCKED WHEN BUILDING IS OCCUPIED" OVER MAIN ENTRY DOORS WITH LOCAL AUTHORITIES.
  - G.C. TO CONFIRM PROPOSED LOCATION OF FIRE PULL STATION FOR HOOD FIRE SUPPRESSION SYSTEM WITH LOCAL AUTHORITIES, OR FIRE INSPECTOR PRIOR TO INSTALLATION.

### ACCESSIBLE SEATING REQ

TOTAL NUMBER OF INTERIOR SEATS	% TO BE HANDICAP ACCESSIBLE	MIN. HANDICAP SPACES REQ.
44	5%	3 SEATS

### MEANS OF EGRESS

INTERIOR SEAT COUNT IS: 44  
 INTERIOR OCCUPANT LOAD IS: 76

**EXIT UNITS:**  
 -(2) EXITS PROVIDED (2) REQUIRED  
 -EXIT AISLES ARE 44" MIN. WIDTH  
 -EXIT ACCESSWAYS ARE 36" MIN. WIDTH

-ALL EXIT DOORS SHALL MEET OR EXCEED 32" CLEAR WIDTH WHEN IN THE OPEN POSITION AND SWING IN THE DIRECTION OF TRAVEL.

-EXIT LOCATIONS MEET OR EXCEED THE REQUIRED NUMBER AND SEPARATION REQUIREMENTS.

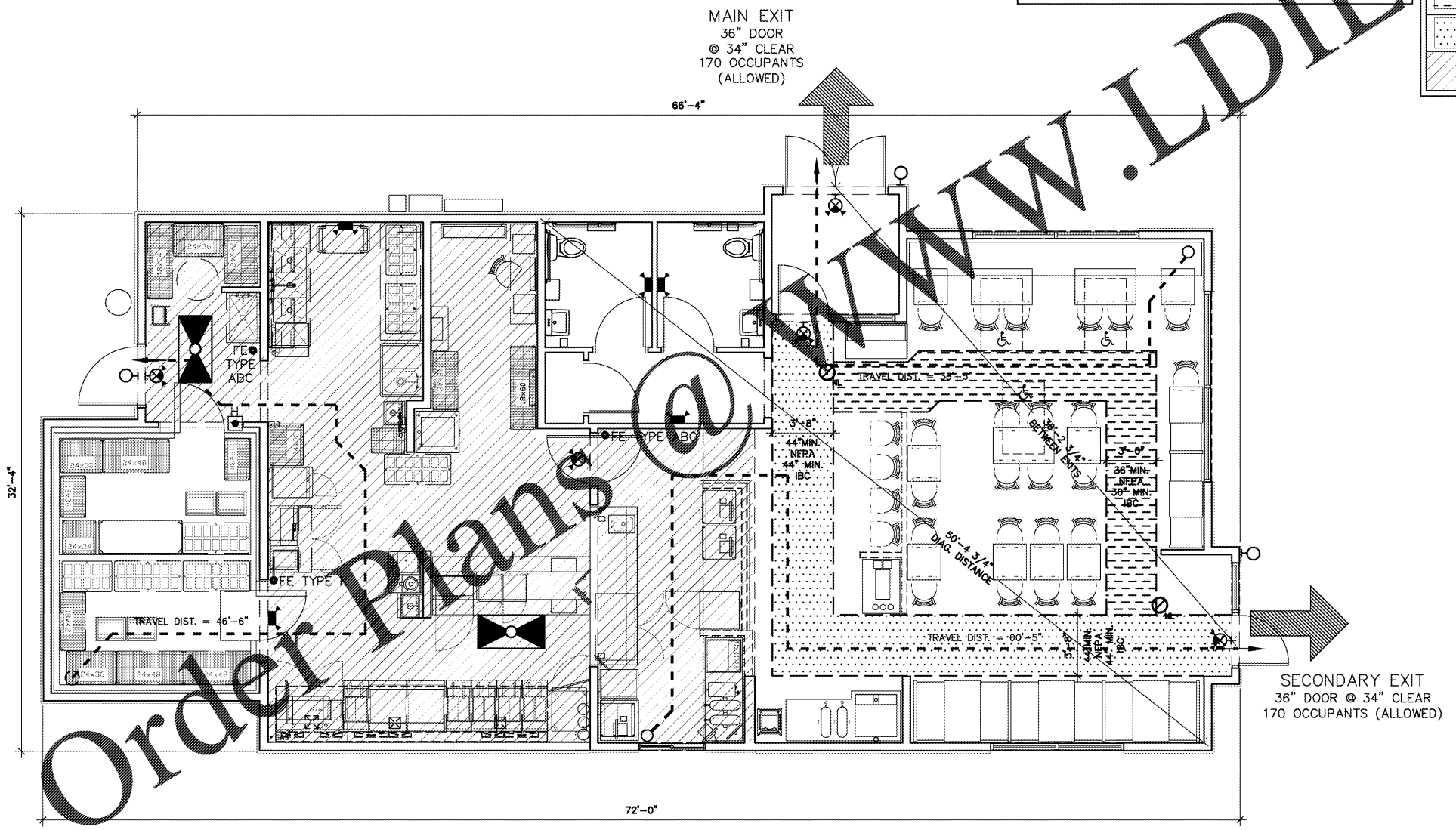
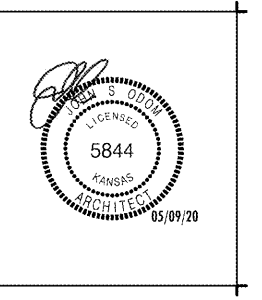
**EGRESS WIDTH:**  
 OCCUPANT LOAD = 76  
 .15 X 95 = 11.4" REQUIRED

**TOTAL EGRESS WIDTH =**  
 (1) DOOR @ 34" CLEAR  
 (1) SET OF DOORS @ 70" CLEAR  
 104" > 11.4"

-50% OF EGRESS MUST EXIT THROUGH MAIN ENTRY  
 (1) DOOR @ 36" = 34" CLEAR  
 50% OF 76 OCCUPANTS = 38 OCCUPANTS  
 .15 X 38 = 5.7" REQUIRED  
 5.7" < 34"

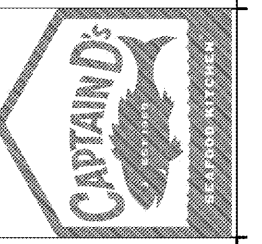
### LEGEND

	REMOVED MOUNTED EXTERIOR EMERGENCY LIGHT
	WALL MOUNTED FIRE EXTINGUISHER
	RECESSED LED CAN LIGHT FIXTURE ON NIGHT LIGHT CIRCUIT
	WALL MOUNTED EMERGENCY LIGHT
	WALL MOUNTED EXIT SIGN - SHADED QUADRANT INDICATES SIGN FACE
	MANUAL PULL STATION FOR HOOD FIRE SUPPRESSION
	FIRE ALARM STROBE
	FIRE ALARM STROBE WITH HORN COMBO
	CEILING MOUNTED SMOKE DETECTOR
	2'X2' RECESSED TROFFER FIXTURE W/ ACRYLIC LENS, NIGHTLIGHT.
	WALL MOUNTED EXIT SIGN WITH EMERGENCY LIGHTS - SHADED QUADRANT INDICATES SIGN FACE
	REQUIRED 36" CLEAR EXIT AISLE ACCESSWAYS
	REQUIRED 44" CLEAR EXIT AISLE
	NON-PUBLIC AREAS



A NEW LOCATION FOR  
**CAPTAIN D'S**  
 7525 STATE AVENUE  
 KANSAS CITY, KS 66112

**CAPTAIN D'S, LLC**  
 624 GRASSMERE PARK DRIVE,  
 SUITE 30  
 NASHVILLE, TN 37211



Job Number: \_\_\_\_\_  
 Revisions: \_\_\_\_\_  
 \_\_\_\_\_  
 \_\_\_\_\_